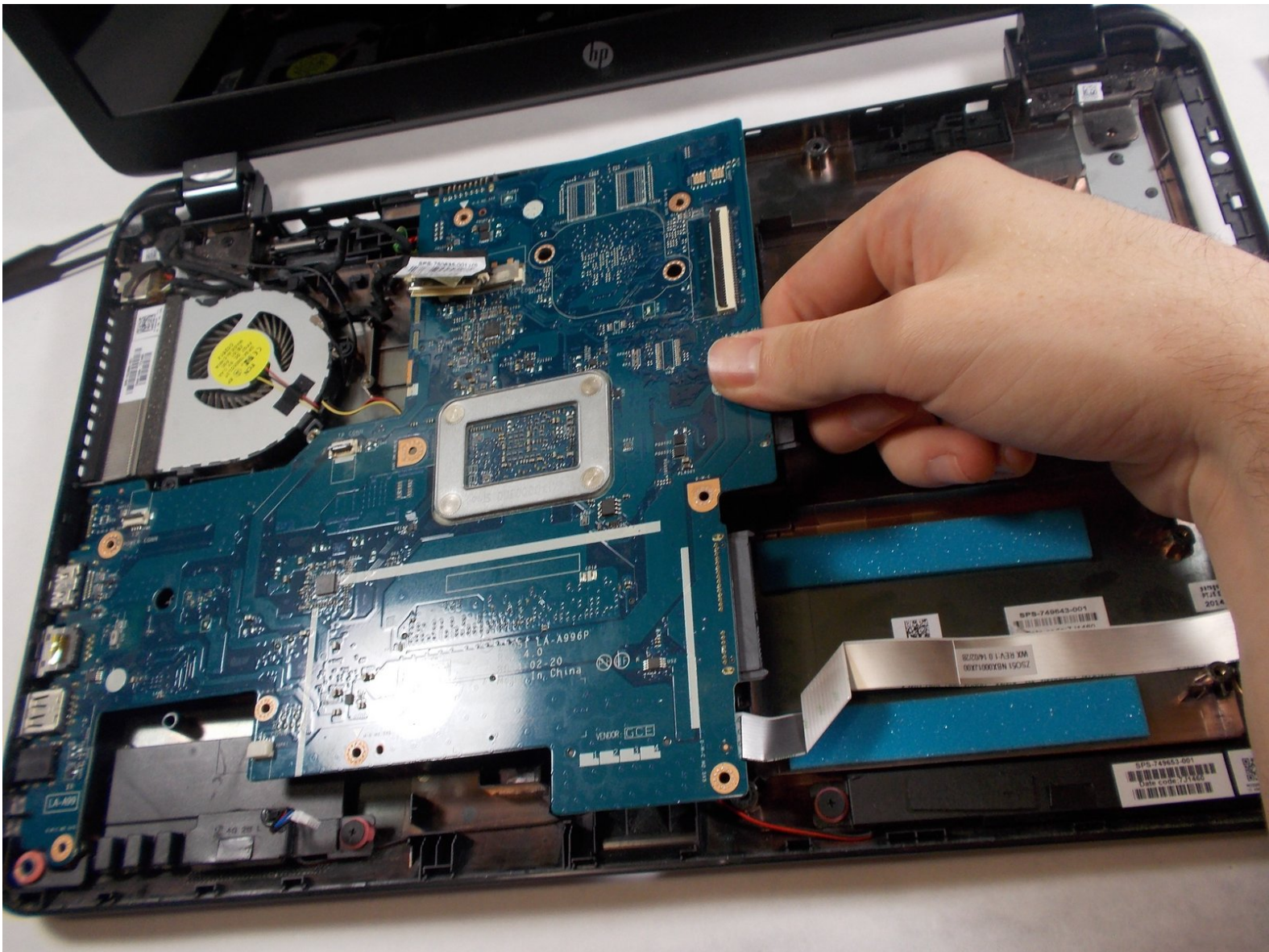




HP 15-g071nr Motherboard Replacement

If the motherboard in your HP 15-g071nr needs to be replaced, this guide will explain how to do so without damaging any components.

Written By: Emerson Tatelbaum



INTRODUCTION

A motherboard can fail for a variety of reasons but this guide assumes that you have diagnosed a system failure and have acquired a new motherboard to use as a replacement. Understanding how a motherboard works is different from knowing how to replace one and only a limited knowledge of computer components is required to complete this process. Follow this guide if you need to replace the motherboard of your HP 15-g071nr.



TOOLS:

- [iFixit Opening Tools](#) (1)
 - [Phillips #0 Screwdriver](#) (1)
-

Step 1 — Battery



- Flip the laptop over.
- ⓘ Accessing the device's battery requires no tools.

Step 2



- Press the tabs at the corners of the laptop at the same time, this will release the battery.

Step 3



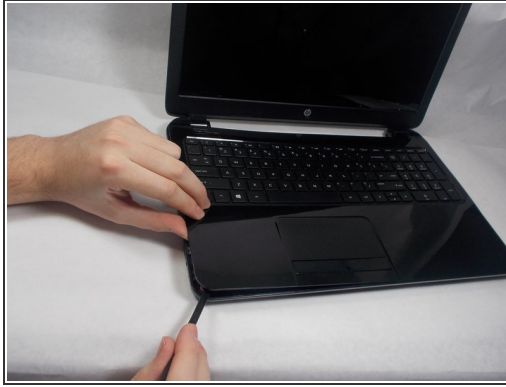
- Pull the battery away from the laptop in one motion.

Step 4 — Hard Drive



- Using your Phillips #0 screwdriver, remove all of the screws on the back case.

Step 5



- Carefully move the iFixit opening tool along the seam of wrist rest until you can remove it.
- Remove the wrist rest once it comes loose from the body.

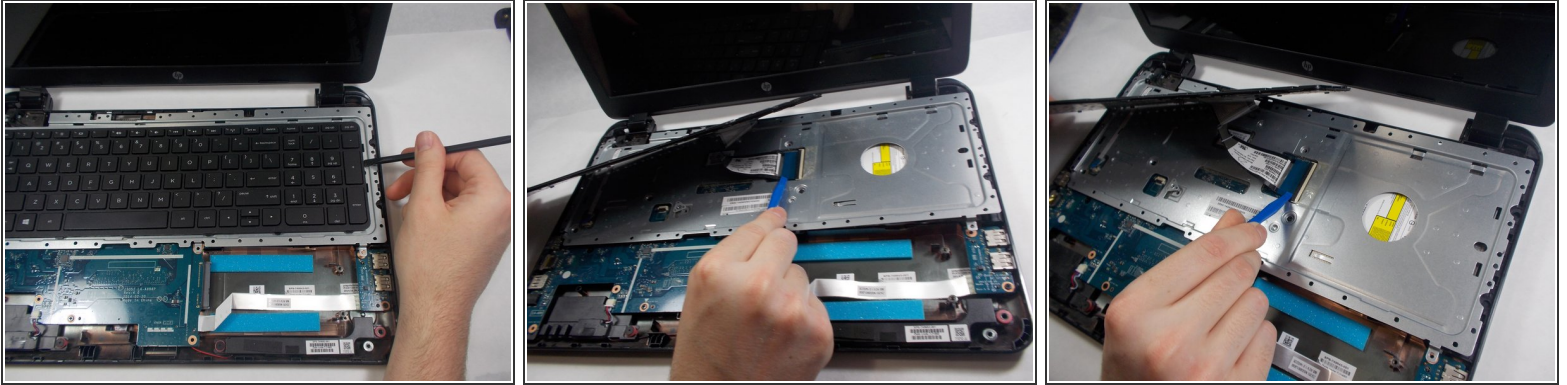
Step 6



- Remove the two screws with the Phillips #0.
- Gently pull the hard drive out of its SATA connection to the motherboard.
- Attach the loose data cable to the new drive.

⚠ Be careful not to damage the silver ribbon cable below the hard drive itself.

Step 7 — Motherboard



- Use one of the plastic opening tools or spudger to lift the keyboard from its housing.
- Slowly lift the keyboard at angle toward the left.
- Just above the blue plastic connection to the motherboard is a clamp . Use your finger to lift this bar and release the cable.

Step 8



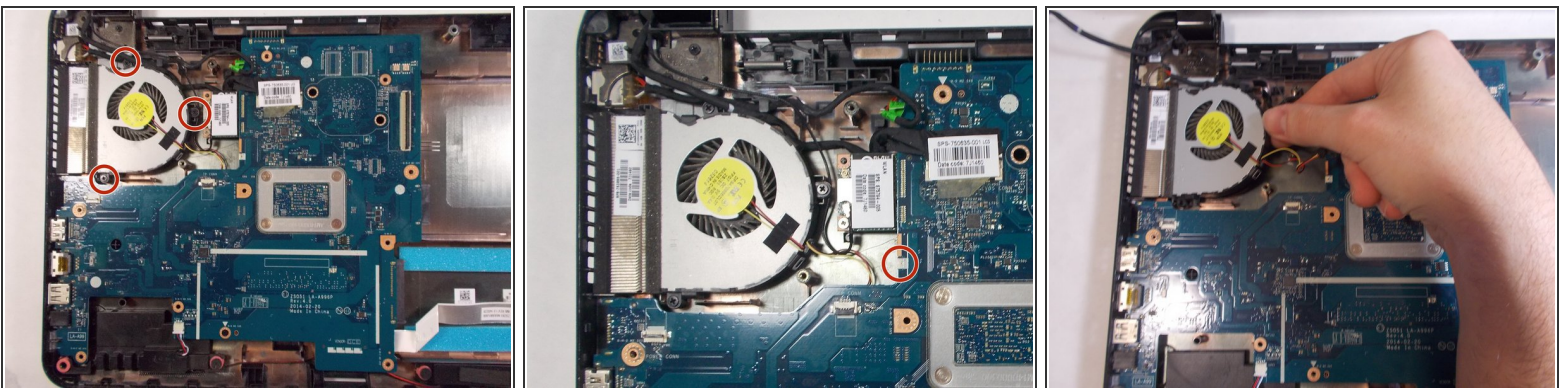
- Lift the keyboard with your hand being careful to unseat the ribbon cable with the blue tab.
- Use the Phillips #0 to remove the five highlighted screws.
- Lift the plate off of the back of the motherboard.

Step 9



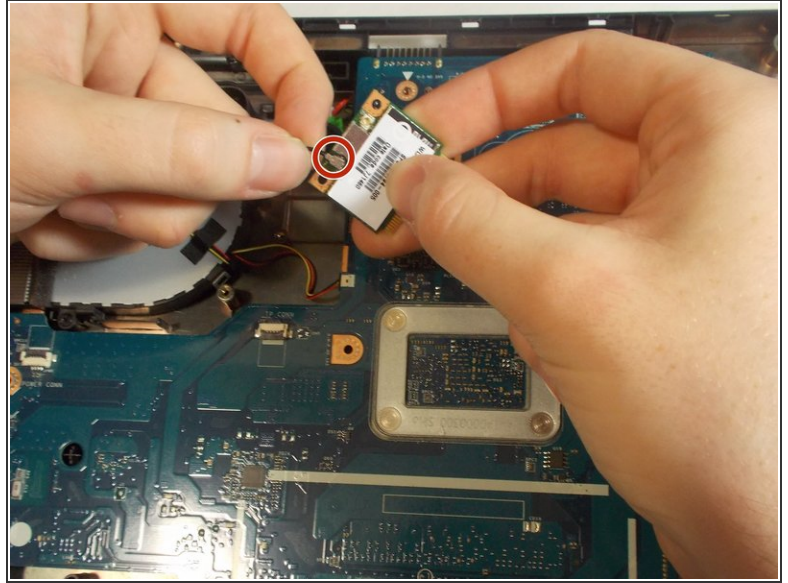
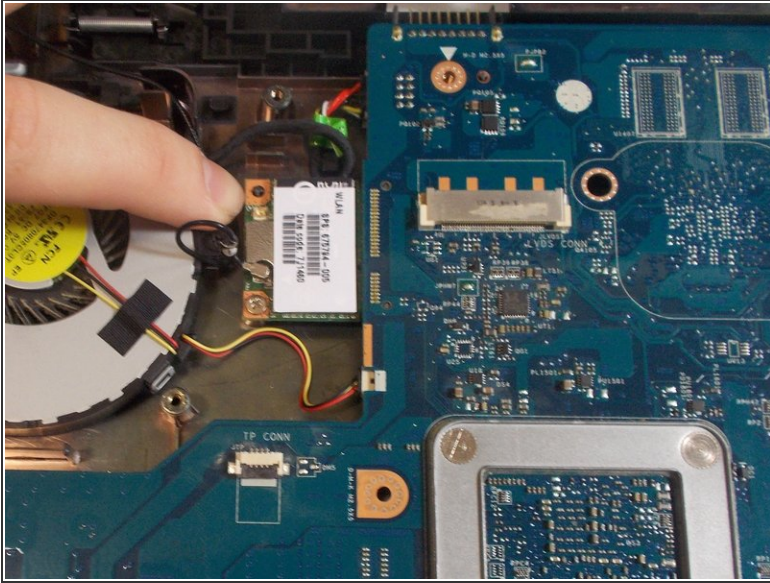
- The screw holding in the CD drive has already been removed.
- Slide the CD drive out.

Step 10



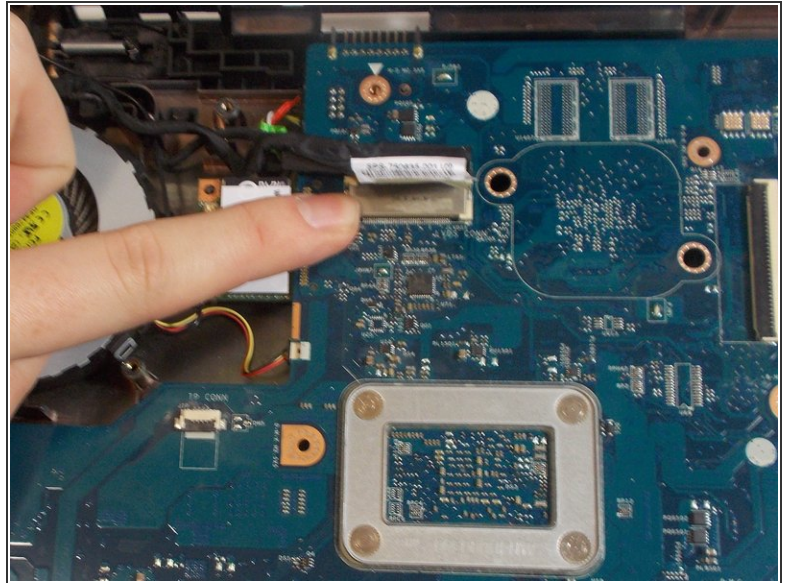
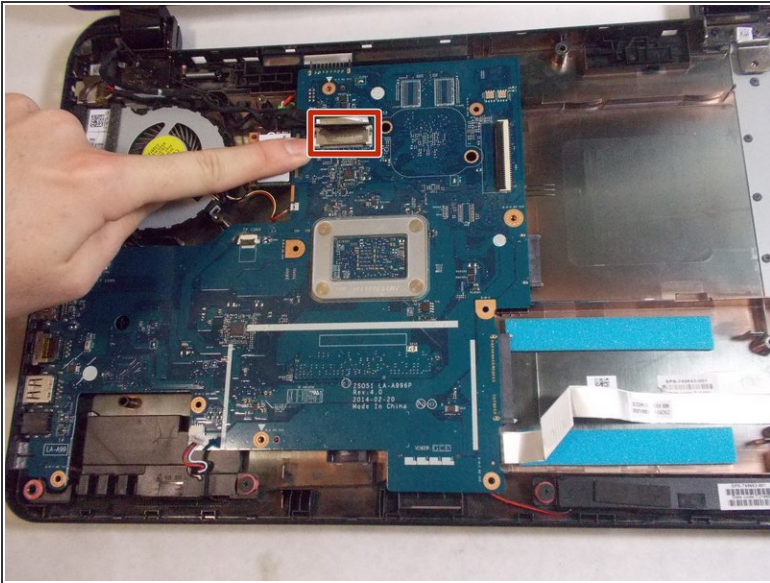
- Remove the three screws connecting the fan to the motherboard with the Phillips #0.
- Remove the fans connection to the motherboard.
- ⓘ The three pin fan connector will be difficult to remove. It is important to not pull it out by the wires. Instead the small tabs on either side should be used in order to not damage the connector.

Step 11



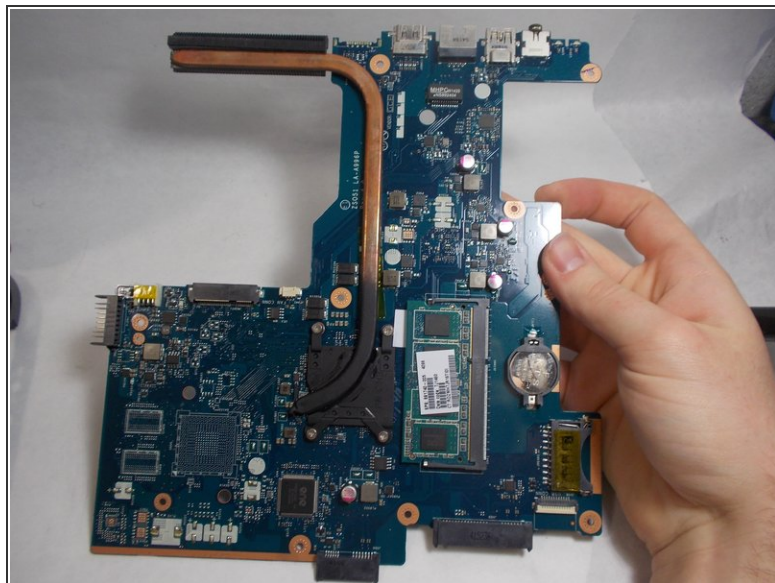
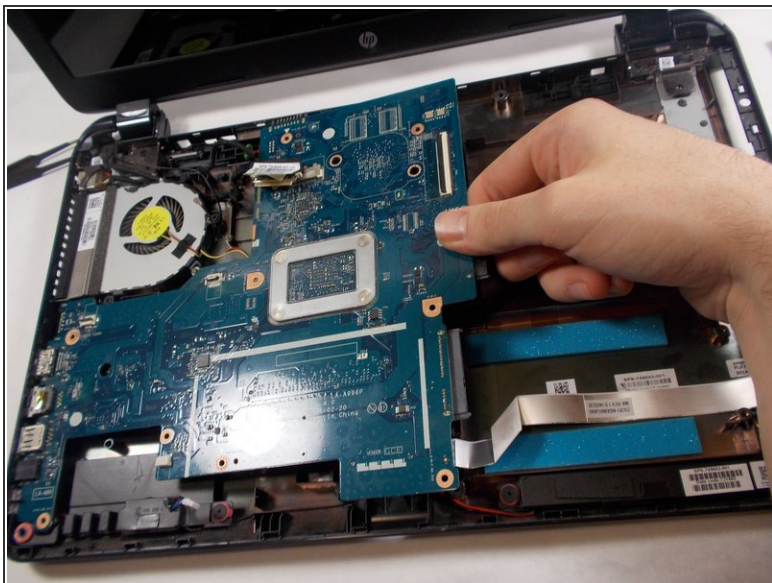
- ⓘ The screw for the wireless card has already been removed.
- Carefully pull the wireless card from its interface with the motherboard.
- The marked connector is the antenna's connection. Use two fingers to wiggle the connector loose from its fitting.
- ⓘ The connector will come off at a 90 degree angle once it is removed.

Step 12



- Remove the screen connector by pulling on the plastic tab.
- Gently wiggle the connector side to side while pulling toward the battery.

Step 13



- Slowly lift the motherboard by pinching on the middle of its right side.
- Wiggle the motherboard side to side to remove.
- ☞ The ports must be aligned with each contact point of the plastic frame when reinstalling to line up each screw hole.

To reassemble your device, follow these instructions in reverse order.