



HP 15-r137wm TouchSmart CD Drive Replacement

How to replace the CD drive in the HP 15-r137wm TouchSmart.

Written By: Ross B Jacques



INTRODUCTION

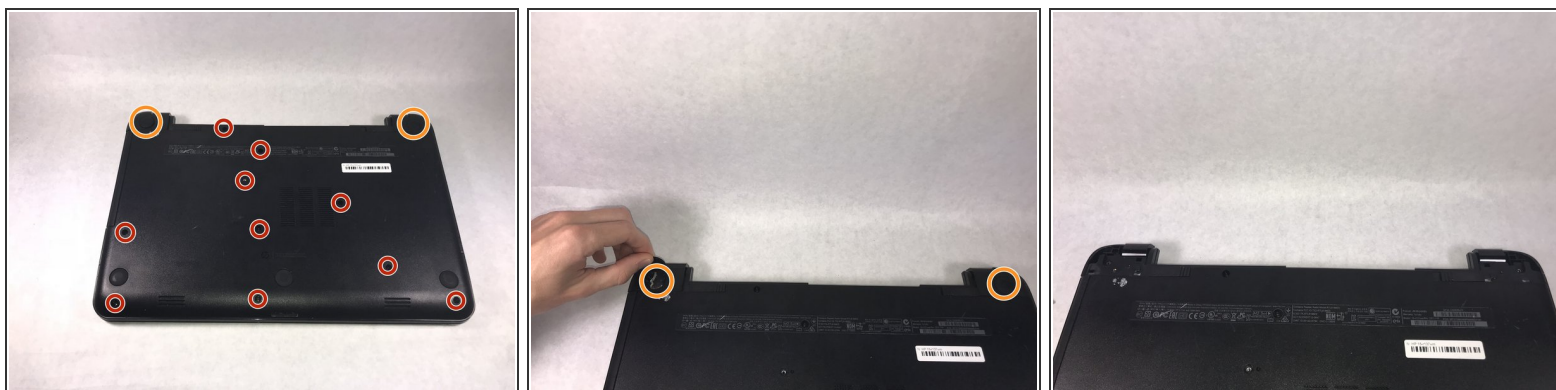
This guide will help you remove and/or replace the CD drive inside of your device. The CD drive simply converts information on the inserted DVD into video and audio. The repair for the CD drive is quite simple once other components are removed.



TOOLS:

- [iFixit Opening Tools](#) (1)
 - [Anti-Static Wrist Strap](#) (1)
 - [Phillips #0 Screwdriver](#) (1)
-

Step 1 — Front Panel Assembly



⚠ Make sure that the device is powered off and unplugged before removing components.

- Remove all ten (10) 5.5 mm Phillips #0 screws.
- Remove the two (2) plastic tabs located at the rear of the panel. Locate the two (2) 7.5mm Phillips #0 screws underneath the pads and remove.


Step 2



- Use a wide plastic opening tool to pry off the top casing.
- i** Be cautious not to crack the casing near the keyboard as it is quite fragile.
- Lift the cover off carefully as there are wires still attached to internal components.
- ⚠** After panel is removed, use an anti-static wrist strap to ensure the motherboard does not get any external shocks from static discharge.

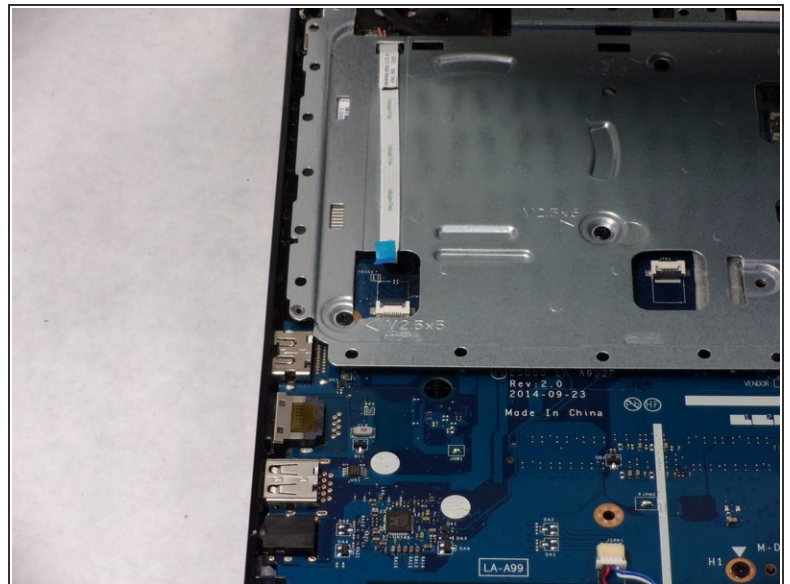
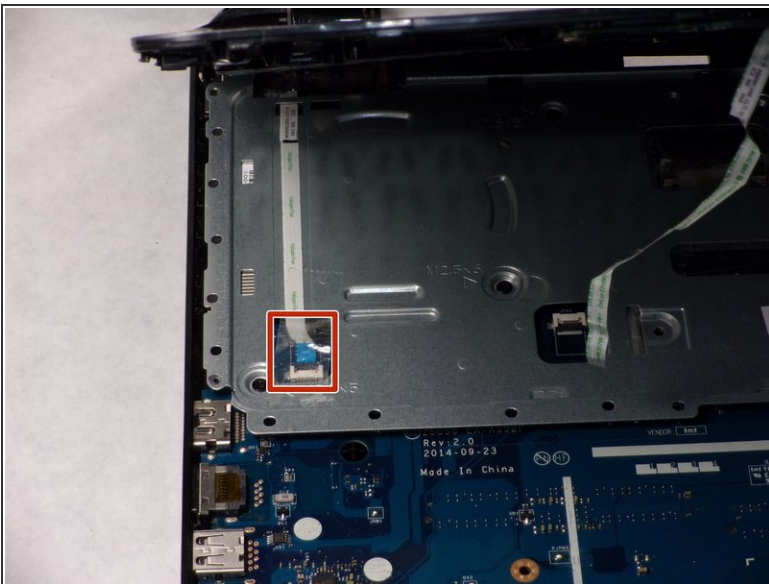
Step 3




 The connection for the track pad is still connected.

- Move the keyboard slightly out of the way to locate the connection.
- Disconnect the small wire protruding from the motherboard underneath the metal plate.

Step 4

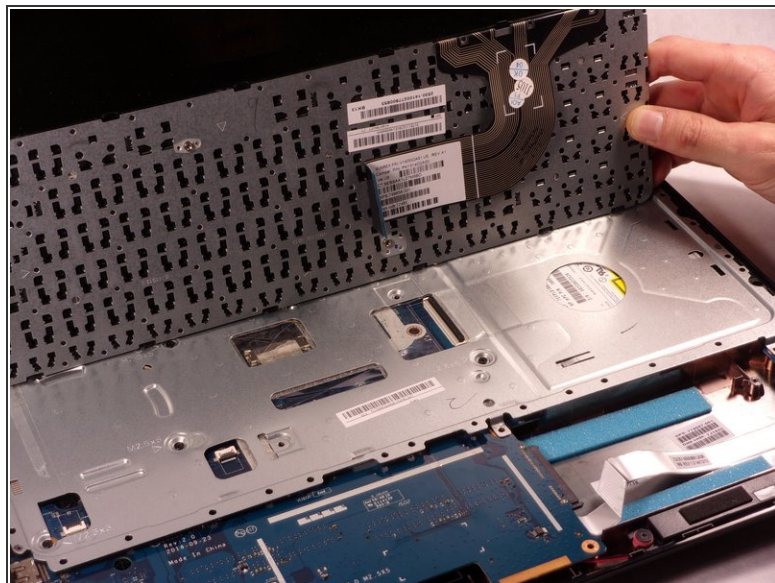
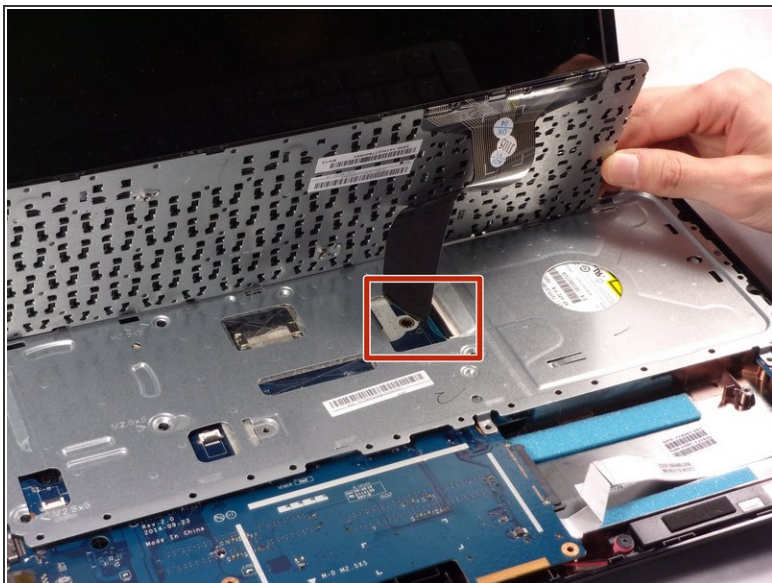


- Locate the connection between the power button and the connecting cable.

 Do not lift the front panel off to far as the cable is still attached.

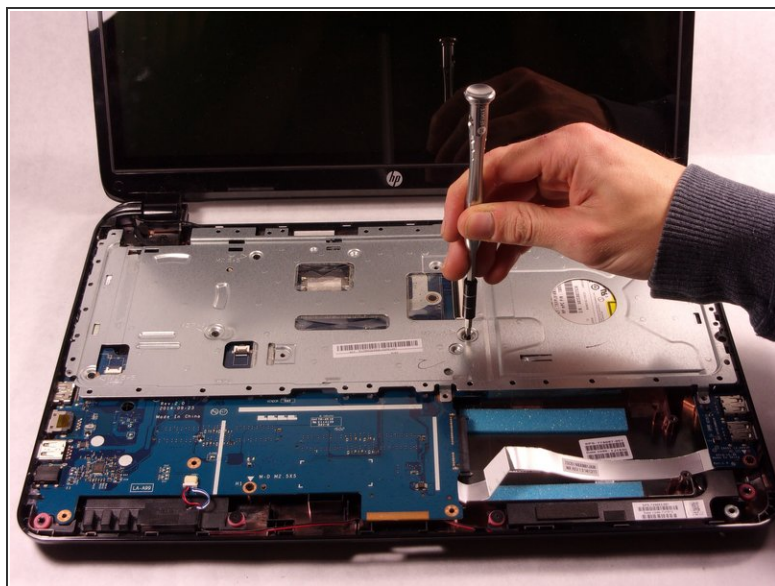
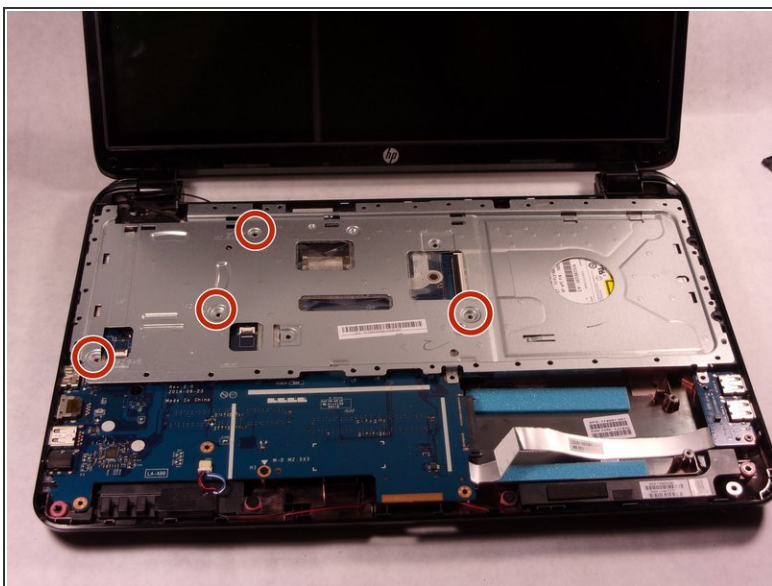
- Remove the cable from the motherboard carefully.

Step 5 — Keyboard



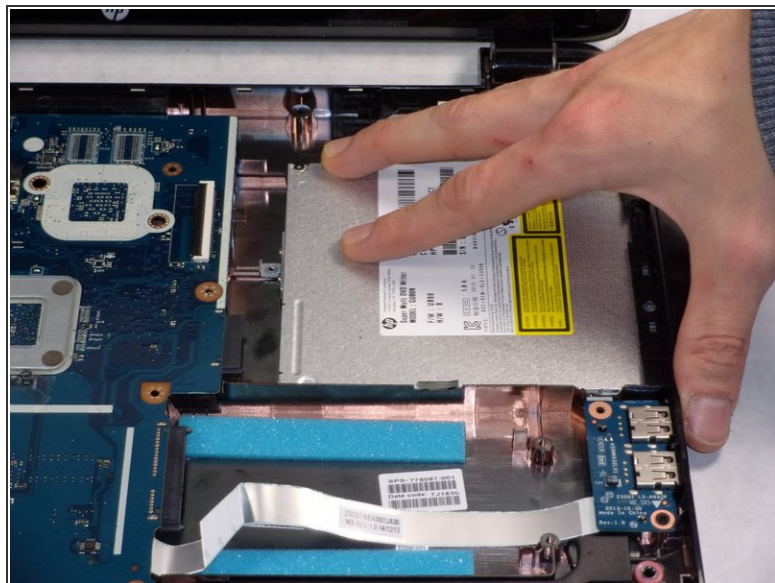
- Disconnect the connection between the keyboard the the motherboard.

Step 6



- Remove the four (4) 2.5mm by 3.5mm Phillips #0 screws from the metal retaining plate.
- Lift the metal retaining plate off and away from the device.

Step 7 — CD Drive



- Slide the CD drive out slowly by pulling it to the right. There are no screws attached, but there is a connection to the motherboard.

To reassemble your device, follow these instructions in reverse order.