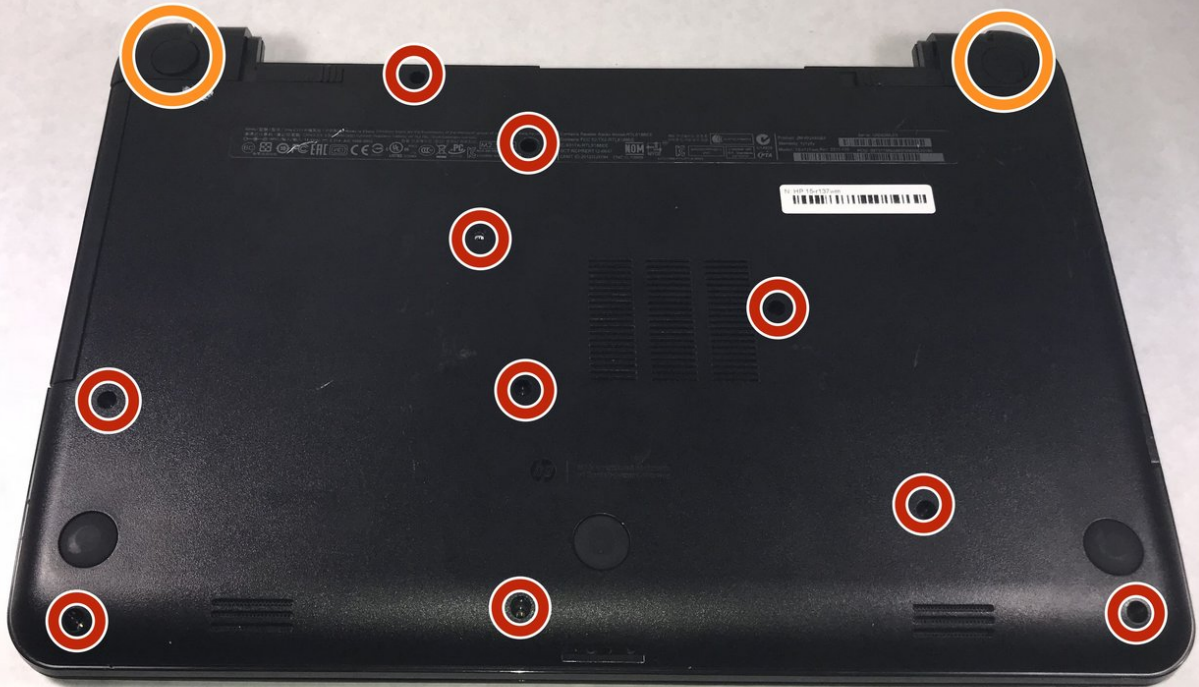




HP 15-r137wm TouchSmart Front Panel Assembly Replacement

How to remove the HP 15-r137wm TouchSmart front panel assembly in order to access other components.

Written By: Ross B Jacques



INTRODUCTION

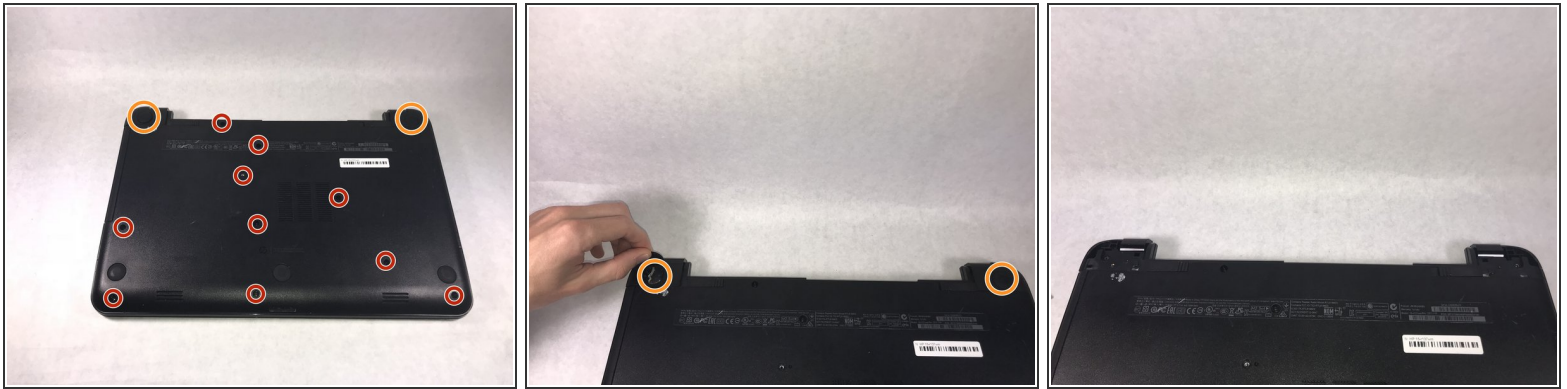
You can use this guide to help you safely and effectively remove the front panel, or the housing cover, from your HP 15-r137wm TouchSmart device. Be sure to follow all steps in order to ensure proper removal of components and connections. This guide is a prerequisite for all guides of this device, since it is required to remove the housing to access the components.



TOOLS:

- [Phillips #0 Screwdriver](#) (1)
 - [iFixit Opening Tools](#) (1)
 - [Anti-Static Wrist Strap](#) (1)
-

Step 1 — Front Panel Assembly



⚠ Make sure that the device is powered off and unplugged before removing components.

- Remove all ten (10) 5.5 mm Phillips #0 screws.
- Remove the two (2) plastic tabs located at the rear of the panel. Locate the two (2) 7.5mm Phillips #0 screws underneath the pads and remove.


Step 2



- Use a wide plastic opening tool to pry off the top casing.
- i** Be cautious not to crack the casing near the keyboard as it is quite fragile.
- Lift the cover off carefully as there are wires still attached to internal components.
- ⚠** After panel is removed, use an anti-static wrist strap to ensure the motherboard does not get any external shocks from static discharge.

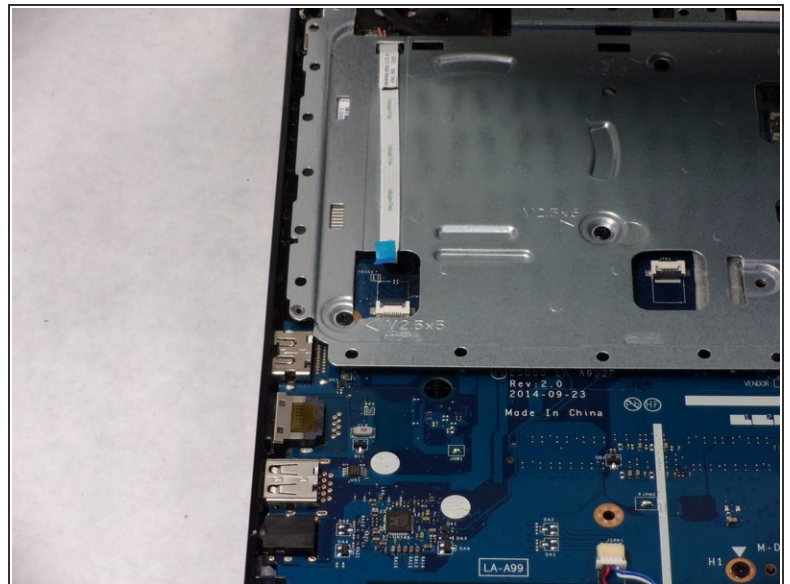
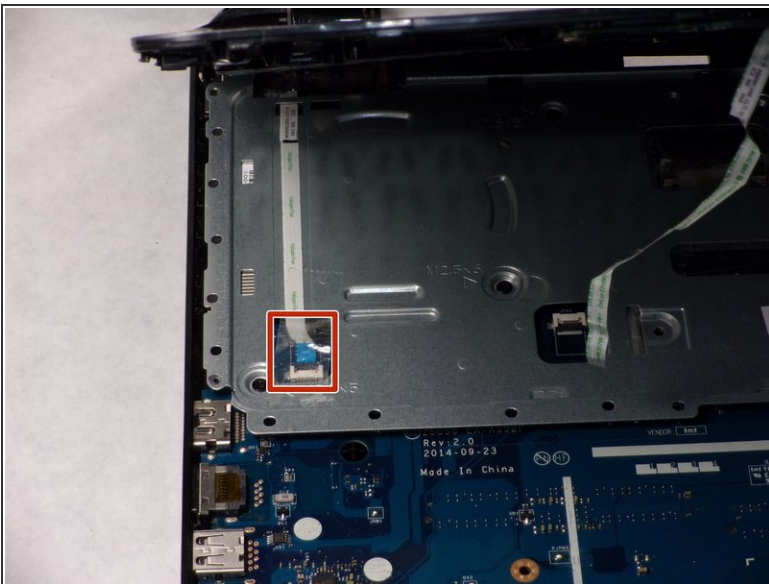
Step 3




 The connection for the track pad is still connected.

- Move the keyboard slightly out of the way to locate the connection.
- Disconnect the small wire protruding from the motherboard underneath the metal plate.

Step 4



- Locate the connection between the power button and the connecting cable.

 Do not lift the front panel off to far as the cable is still attached.

- Remove the cable from the motherboard carefully.

To reassemble your device, follow these instructions in reverse order.