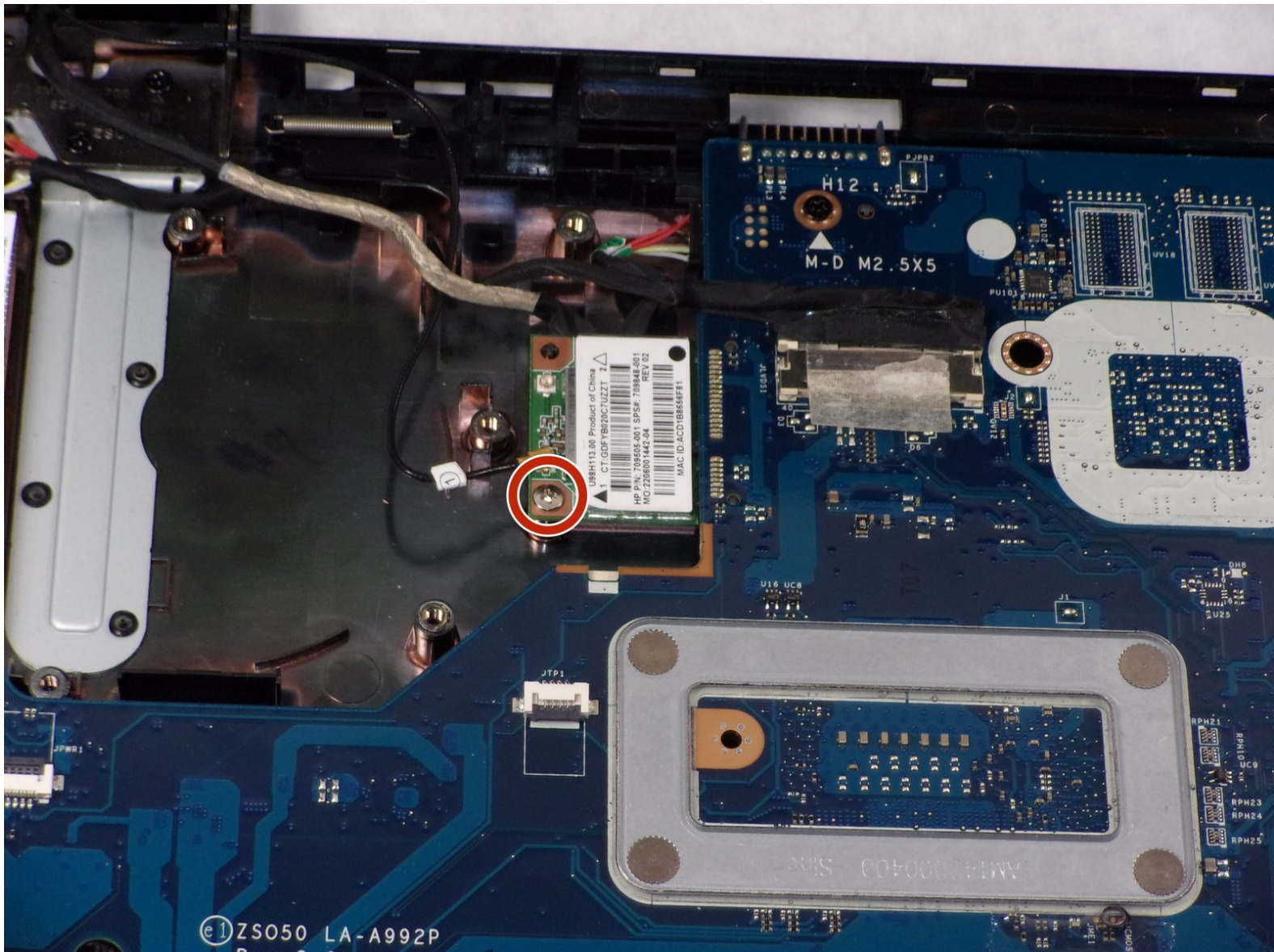




# HP 15-r137wm TouchSmart Screen Replacement

How to safely disconnect and remove the screen from your HP 15-r137wm device.

Written By: Ross B Jacques



## INTRODUCTION

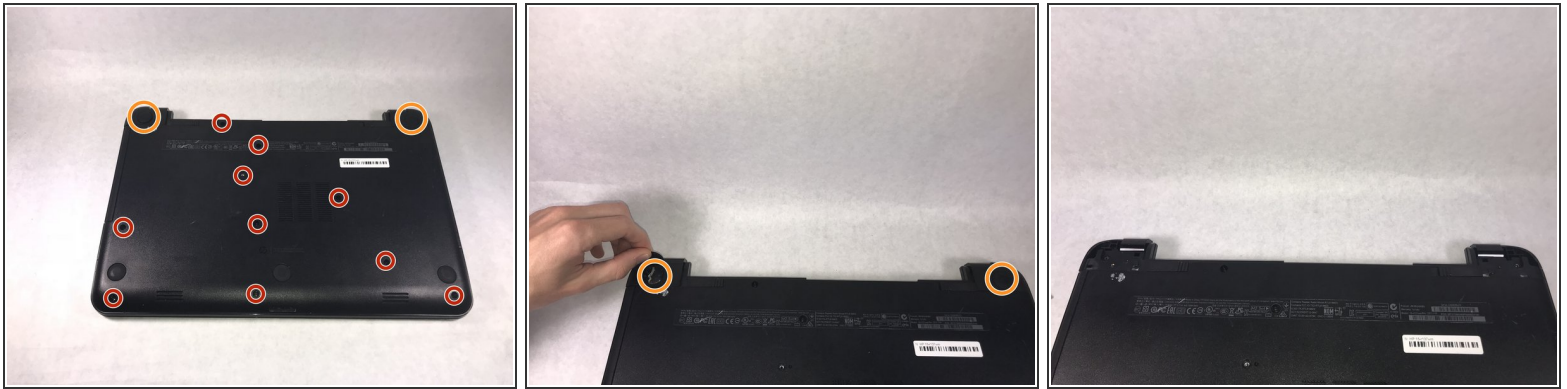
You can use this guide to help you safely and effectively remove the screen from your HP 15-r137wm TouchSmart device.

---

### TOOLS:

- [iFixit Opening Tools](#) (1)
  - [Anti-Static Wrist Strap](#) (1)
  - [Phillips #0 Screwdriver](#) (1)
-

## Step 1 — Front Panel Assembly



**⚠** Make sure that the device is powered off and unplugged before removing components.

- Remove all ten (10) 5.5 mm Phillips #0 screws.
- Remove the two (2) plastic tabs located at the rear of the panel. Locate the two (2) 7.5mm Phillips #0 screws underneath the pads and remove.

## Step 2




- Use a wide plastic opening tool to pry off the top casing.
- ⓘ Be cautious not to crack the casing near the keyboard as it is quite fragile.
- Lift the cover off carefully as there are wires still attached to internal components.
- ⚠** After panel is removed, use an anti-static wrist strap to ensure the motherboard does not get any external shocks from static discharge.



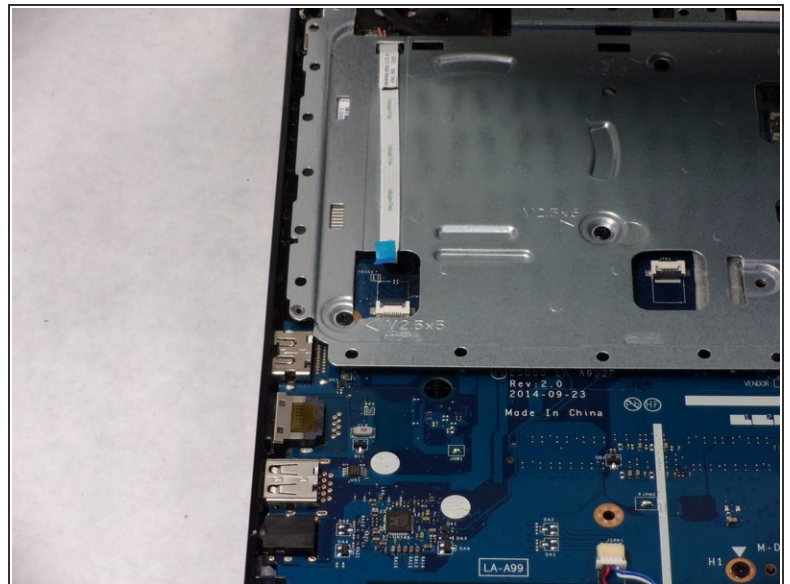
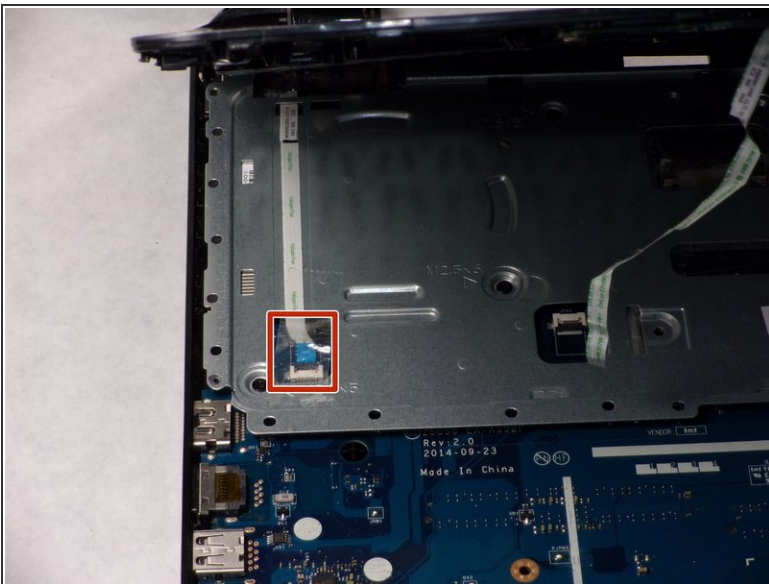
## Step 3




 The connection for the track pad is still connected.

- Move the keyboard slightly out of the way to locate the connection.
- Disconnect the small wire protruding from the motherboard underneath the metal plate.

## Step 4

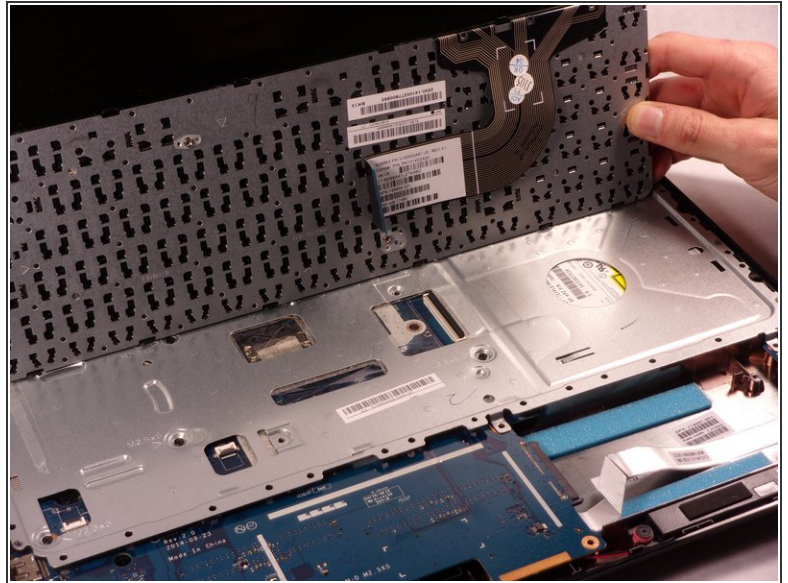
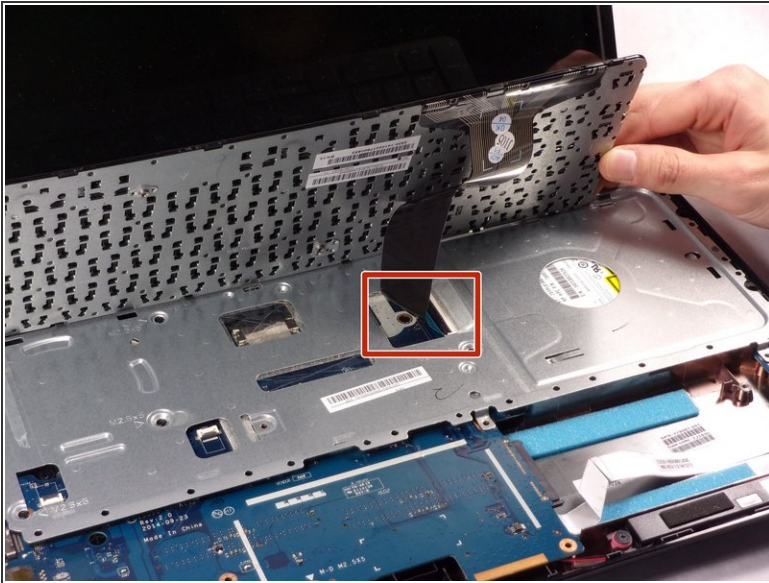


- Locate the connection between the power button and the connecting cable.

 Do not lift the front panel off to far as the cable is still attached.

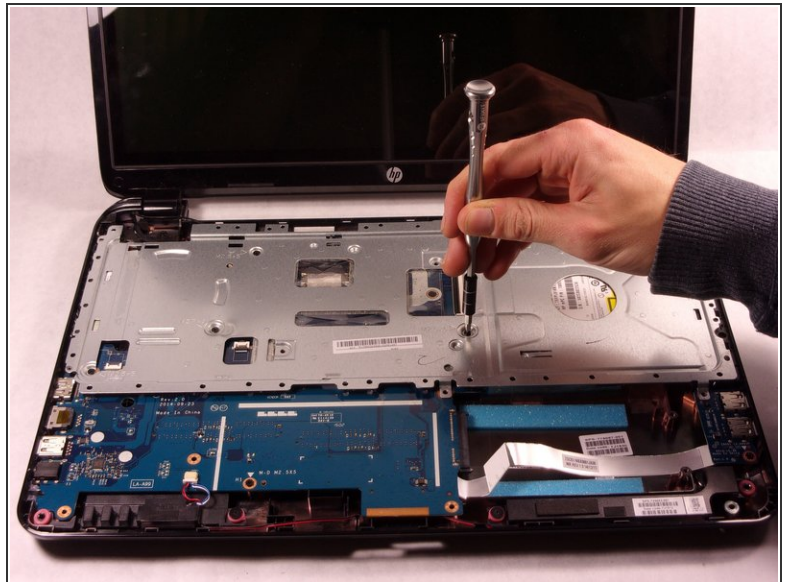
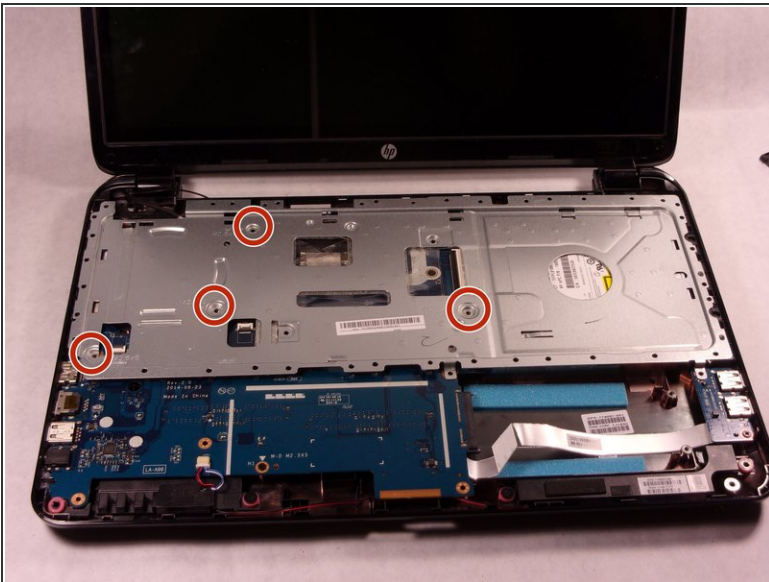
- Remove the cable from the motherboard carefully.

## Step 5 — Keyboard



- Disconnect the connection between the keyboard the the motherboard.

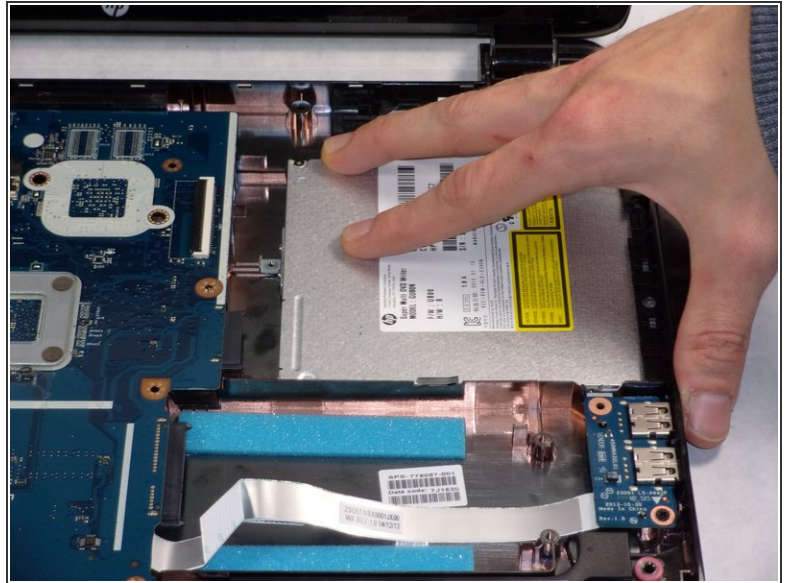
## Step 6



- Remove the four (4) 2.5mm by 3.5mm Phillips #0 screws from the metal retaining plate.
- Lift the metal retaining plate off and away from the device.

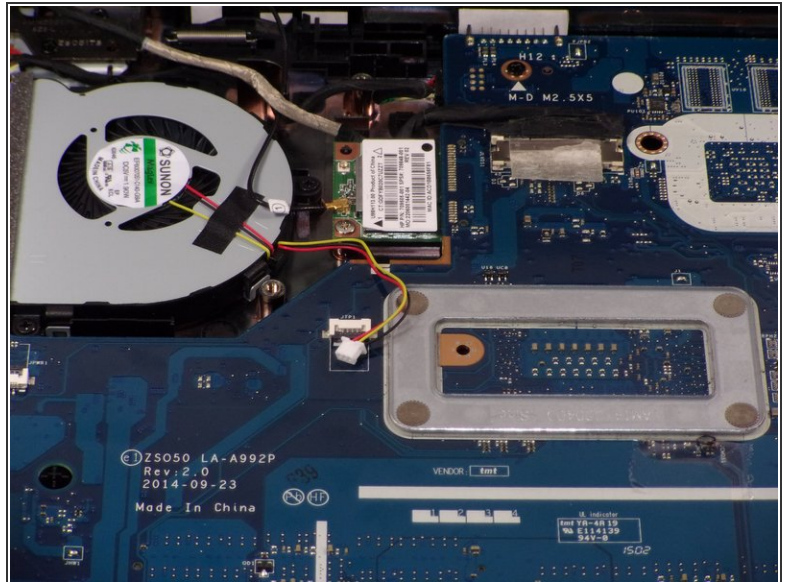
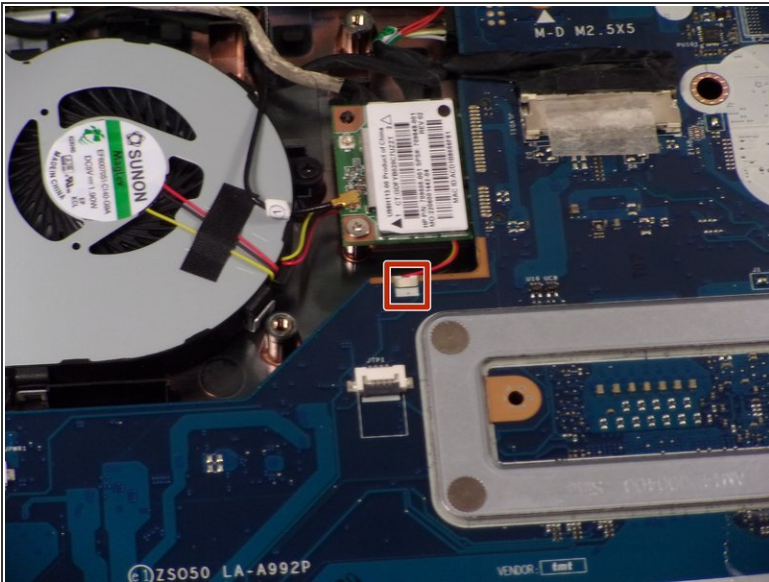


## Step 7 — CD Drive



- Slide the CD drive out slowly by pulling it to the right. There are no screws attached, but there is a connection to the motherboard.

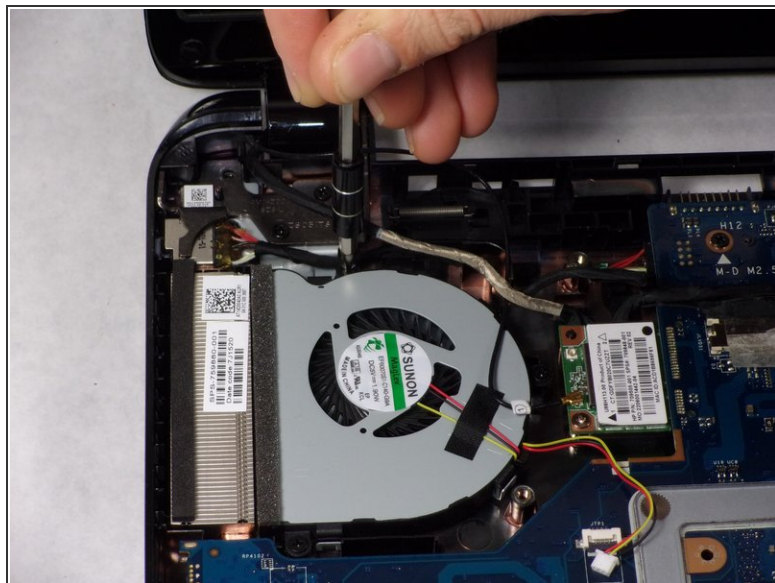
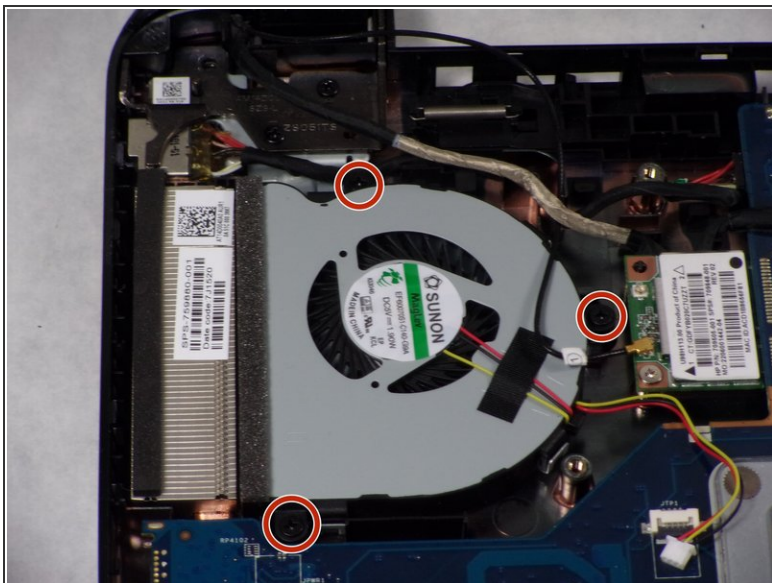
## Step 8 — Cooling Fan



- Locate the small connection on the motherboard and disconnect it by slowly pulling it away from the motherboard.
- ⓘ Slowly disconnect the cable as the wires are very small and fragile

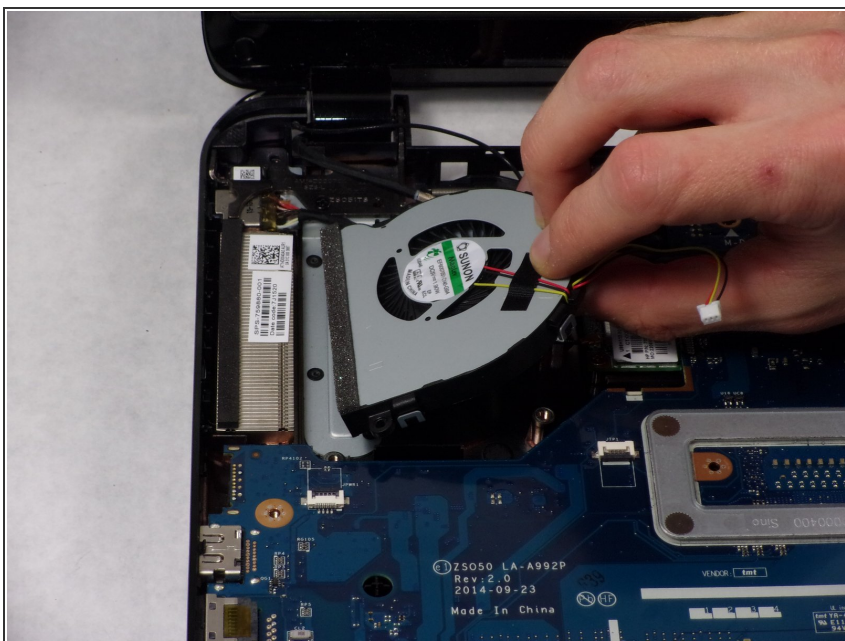


## Step 9



- Remove the three (3) 2.5mm by 3.5mm Phillips #0 screws from the fan.

## Step 10

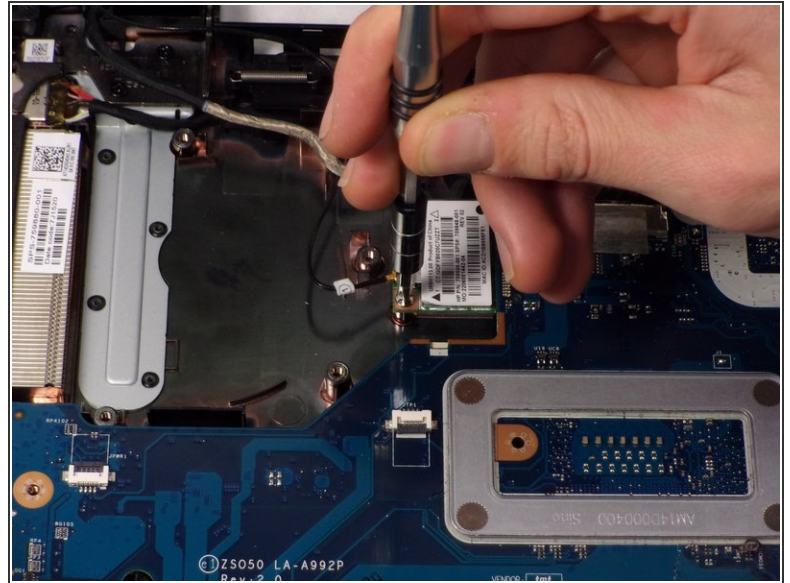
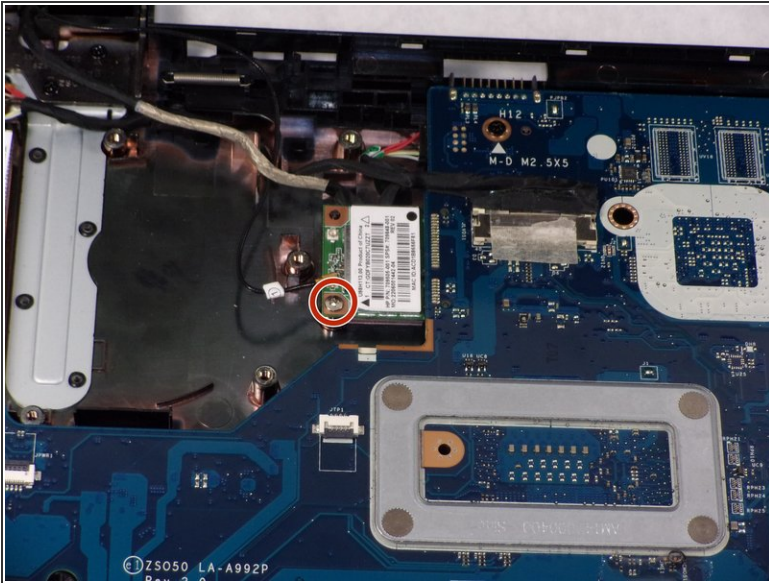


- Remove the cooling fan from the housing carefully.

- ⓘ The fan may be connected to the small foam screen. Pull gently to release it.

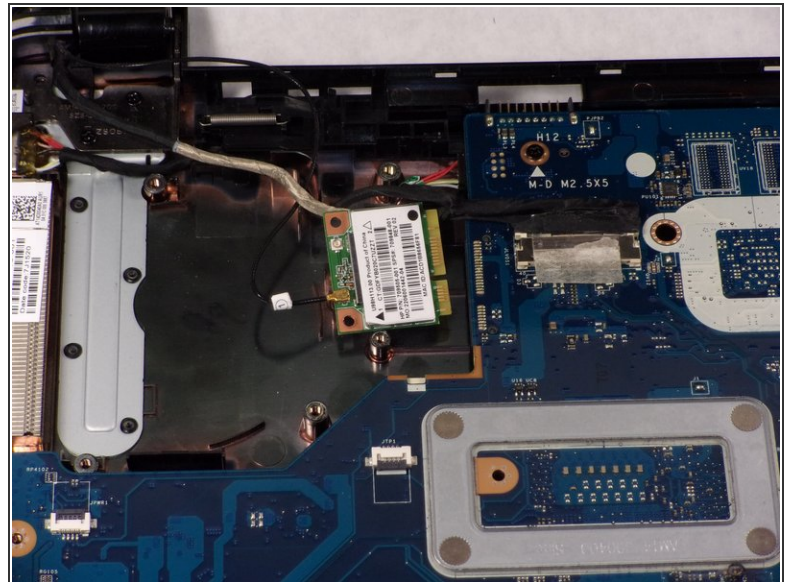
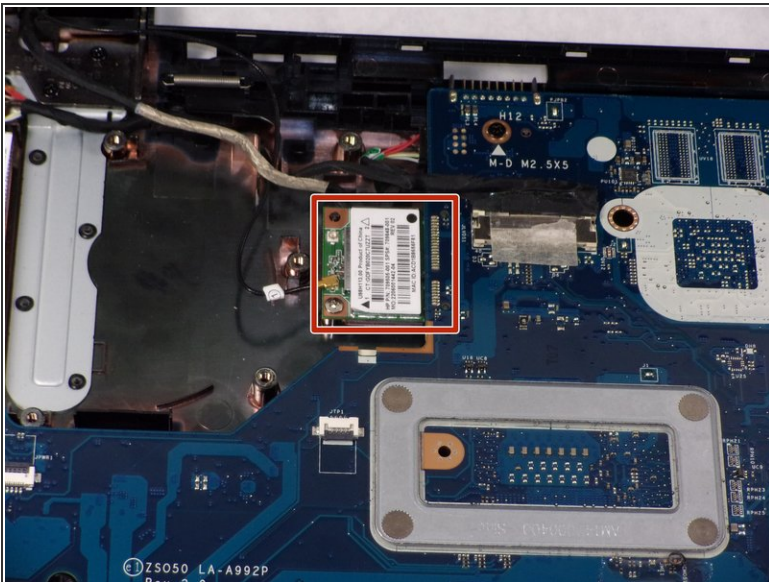


## Step 11 — Screen



- Remove the 5.5mm Phillips #0 screw.

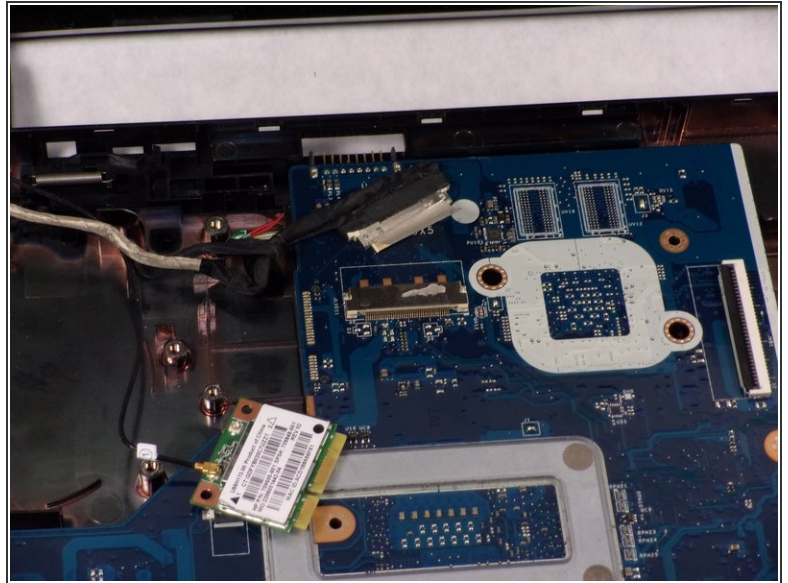
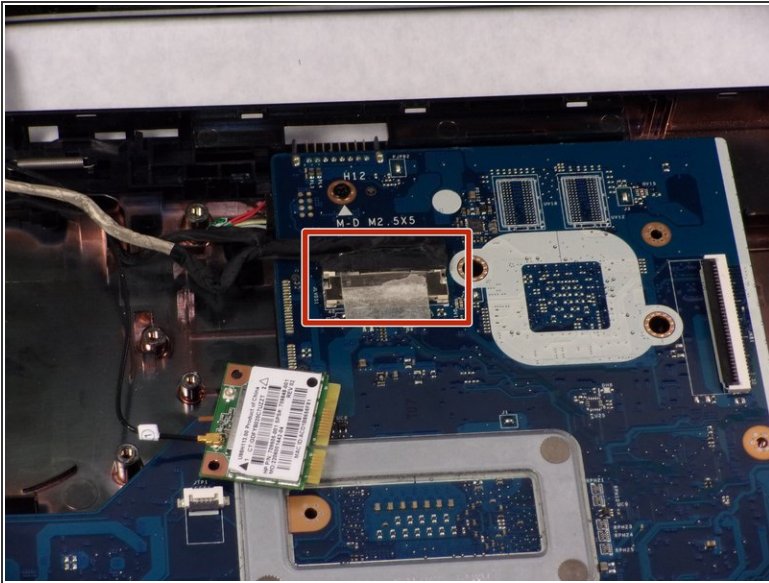
## Step 12



- Gently pull and slide the video card out of its connector.

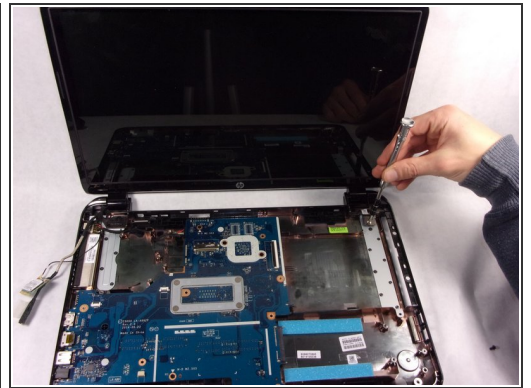
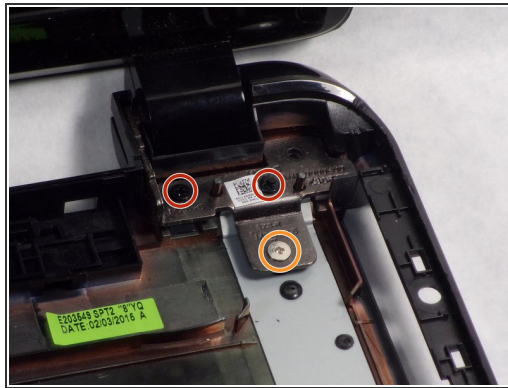
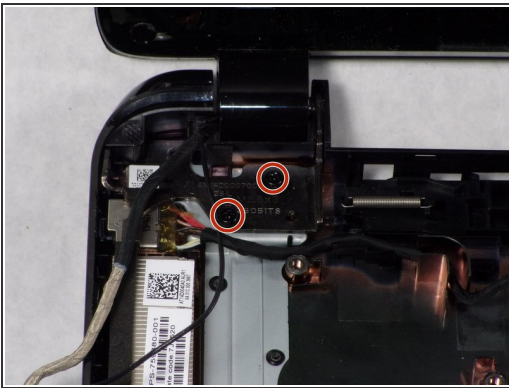


## Step 13



- Lift up tape, and then remove the power cable from its connector.

## Step 14



- Remove all four (4) 5.5mm Phillips #0 screws.
- Remove the one (1) 2.5mm Phillips #0 screw.

⚠ Since all of the screws are now removed, the screen will begin to fall off on its own. make sure the screen is supported before removal.

## Step 15



- The screen can now be lifted out of place from the laptop.

To reassemble your device, follow these instructions in reverse order.