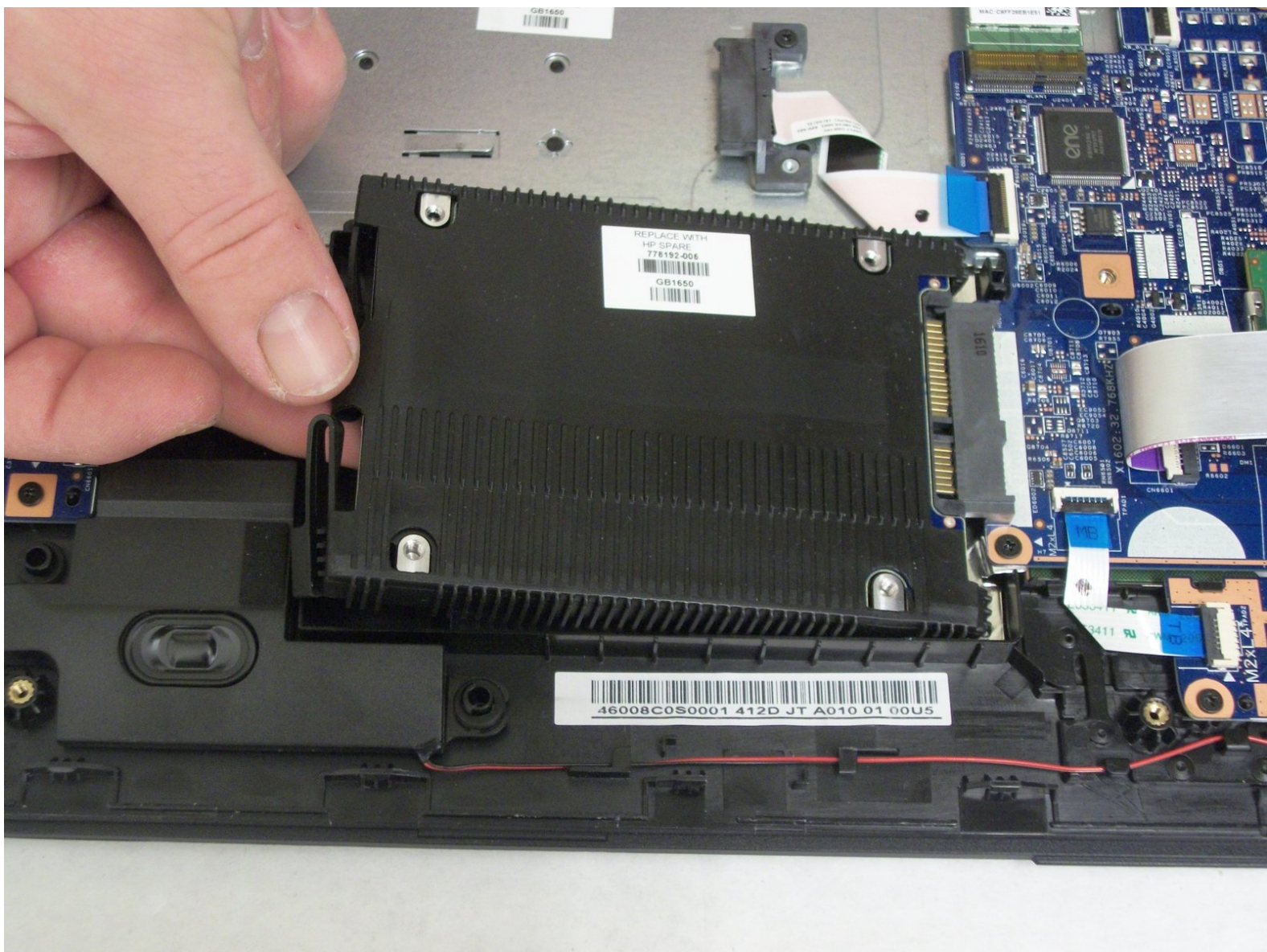




# HP 17-x061nr Hard Drive Replacement

This guide will show you how to replace the hard drive in the HP 17-x061nr. If the hard drive fails, your computer will turn on, but the OS won't load.

Written By: Curtis Haley



## INTRODUCTION

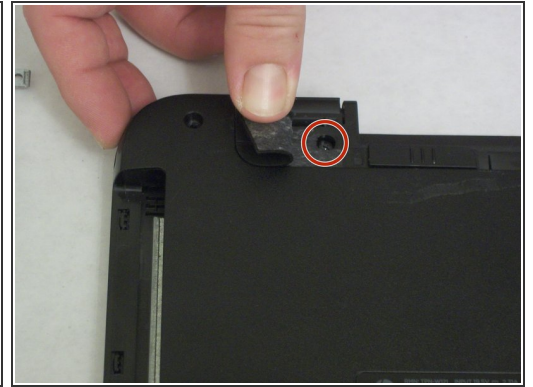
The hard drive is one of the more common computer components to fail. The hard drive on a computer is responsible for everyday activities such as loading the OS or accessing apps. Replacing the hard drive also allows for optimization as there are many different hard drives available on the market. Hard drives are "plug and play" components which means that they can be removed and replaced very easily. The tricky part is getting to them inside the computer. The replacement hard drive should be left in the package until it is ready to be installed as any foreign material that gets on or in the hard drive may affect the performance of the component. Learn how to replace your hard drive using this guide for your HP laptop.



### TOOLS:

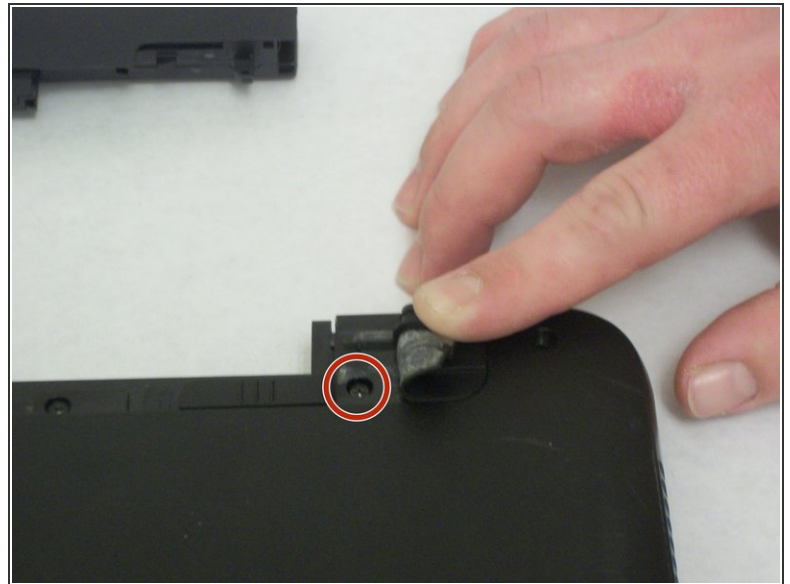
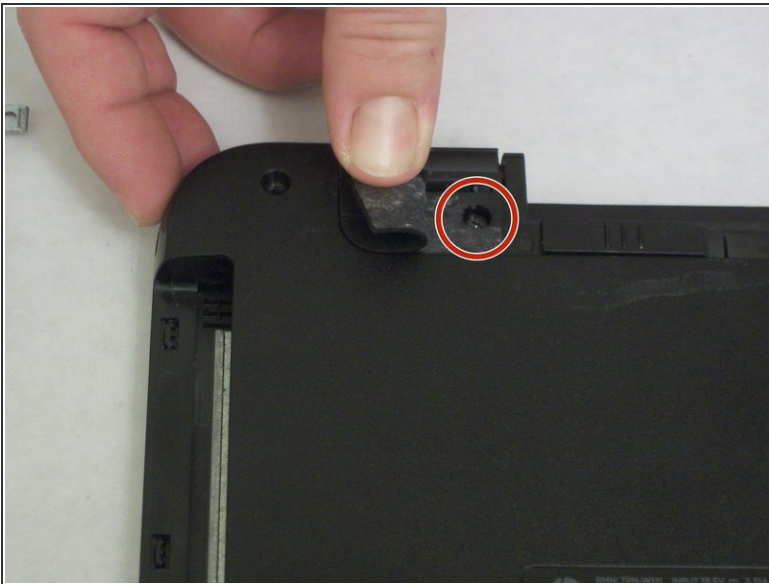
- [iFixit Opening Tools](#) (1)
  - [JIS #0 Screwdriver](#) (1)
-

## Step 1 — HP 17-x061nr Disassembly



- With the laptop upside down, remove the battery by hand and the twelve 7.0 mm screws that are holding the back case to the front. Use a JIS #0 screwdriver to remove the screws.

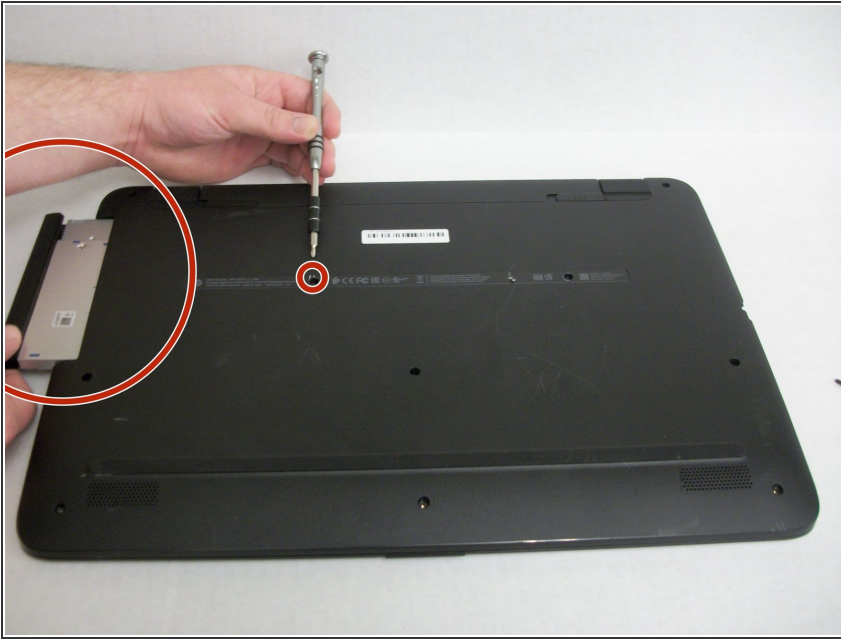
## Step 2



- Peel back the rubber footrests located next to the battery, on the left and right sides.
- Remove the two 7.0 mm screws underneath the rubber feet using a JIS #0 screwdriver.

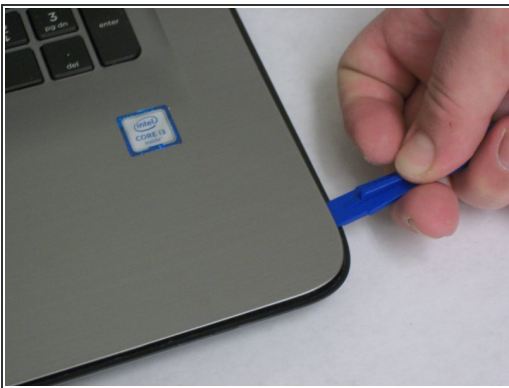


## Step 3



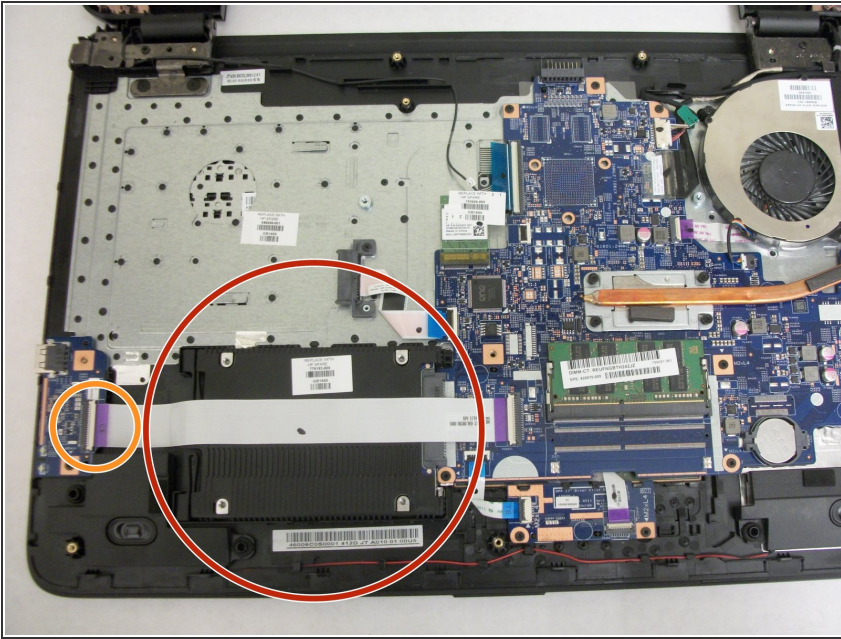
- Slide the optical drive out and away from the laptop.

## Step 4



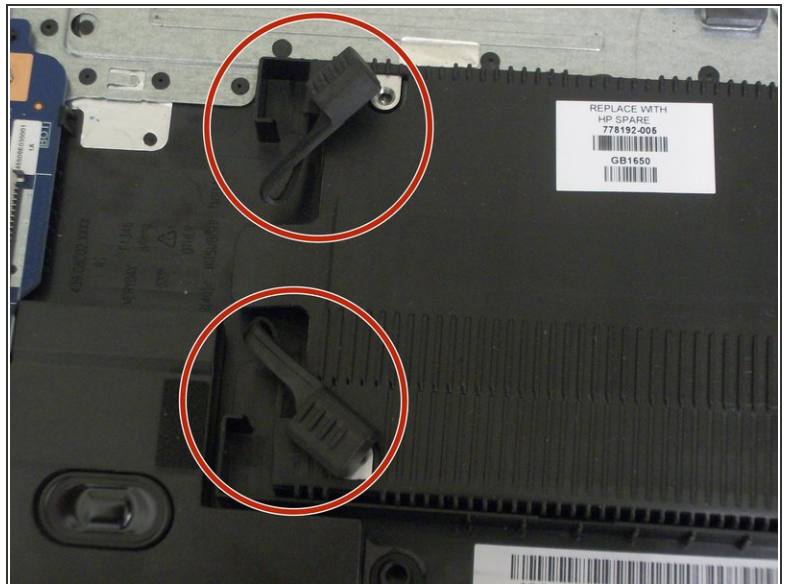
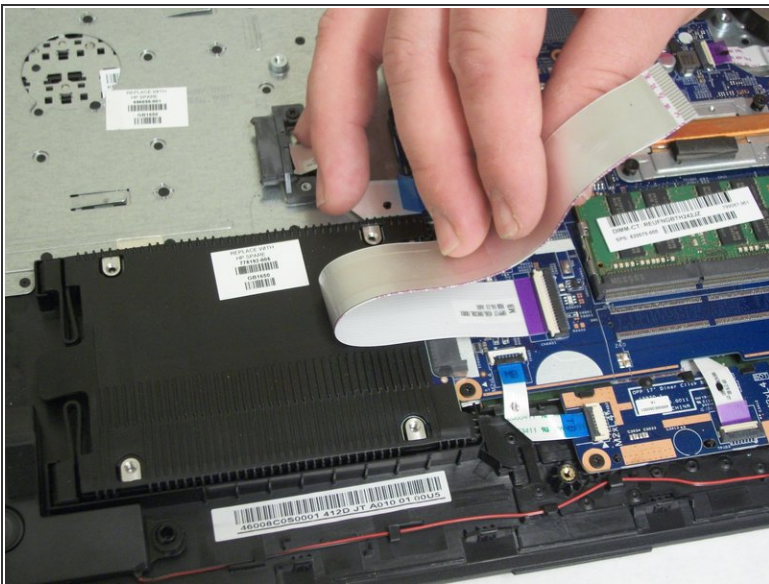
- Flip the computer over and use a plastic opening tool to wedge between the back and front cases.
- Trace the perimeter of the laptop. Make sure to keep the tool inserted between the front and back cases. You will hear popping sounds as the back case becomes disengaged from the front plate.
- Flip the laptop over and lift the back case off. Now you have access to all of the internal hardware.

## Step 5 — Hard Drive



- Locate the hard drive.
- Using the purple hard plastic tab gently pull the cable tape tab out of the input, located on the left-hand side.

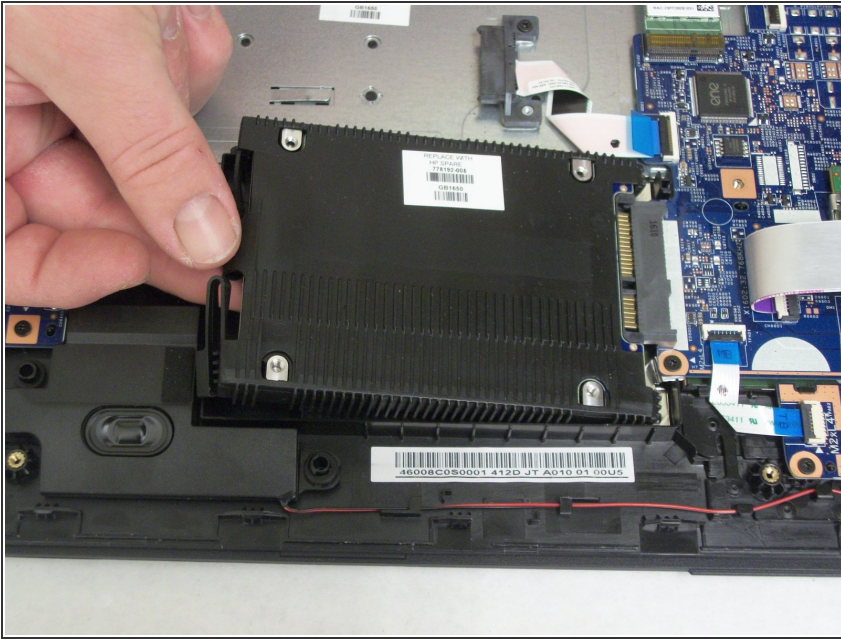
## Step 6



- Carefully peel back the cable tape from the hard drive itself.
- Pull the shock absorbers from the back of the hard drive casing.



## Step 7



- Lift up the back of the hard drive module and gently pull it away from the connection point.
- ⓘ Be sure to keep the replacement within the package until you are ready to place it.

To reassemble your device, follow these instructions in reverse order.