



HP 2000 - 2D22DX Hard Drive Replacement

How to replace a HP 2000 - 2D22DX hard drive.

Written By: Conor Most



INTRODUCTION

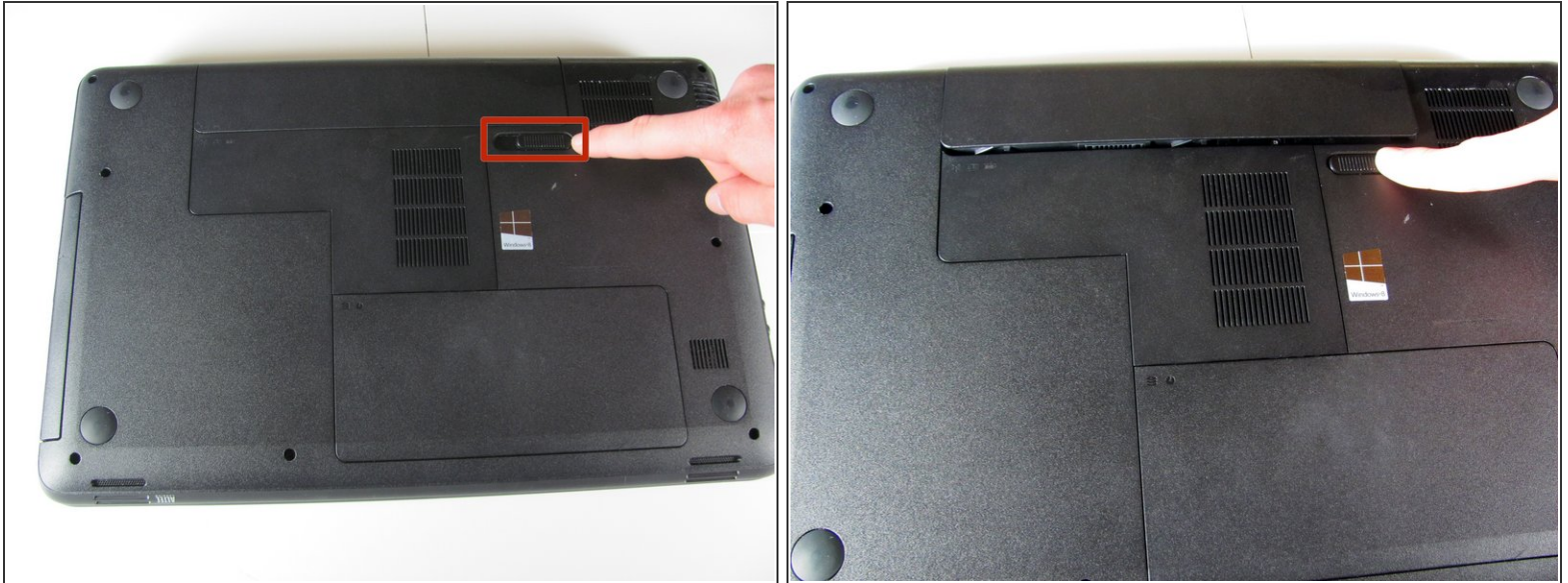
A good hard drive is essential to an optimally performing computer. If your computer is slowing down, a new hard drive may be exactly what your device needs to start functioning at its maximum potential.



TOOLS:

- [Phillips #00 Screwdriver](#) (1)
 - [Spudger](#) (1)
-

Step 1 — Battery



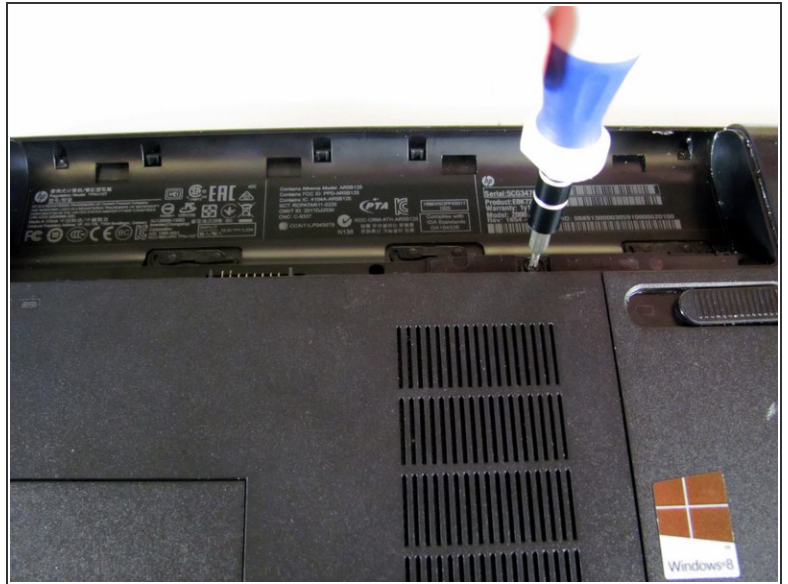
- Flip the device over and locate the battery compartment.
- Slide the battery release latch to the left until the battery is detached from its slot.
- A distinguishable *pop* will be heard when the battery is fully released.

Step 2



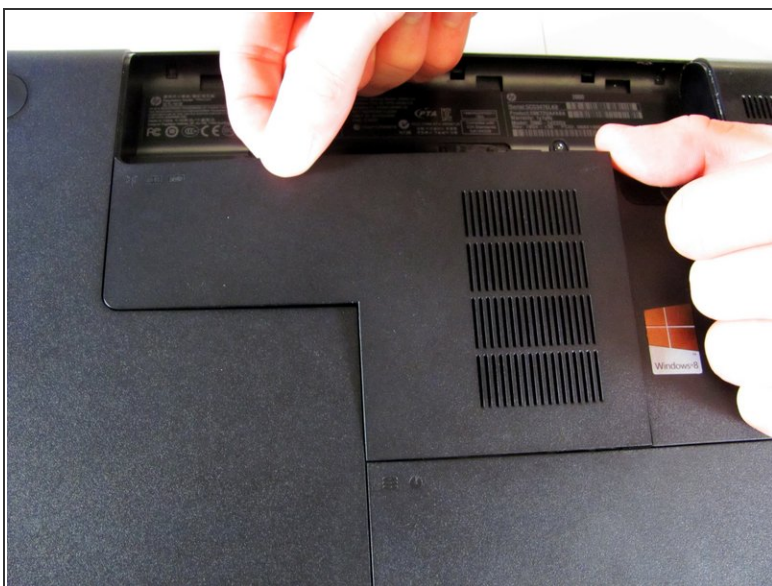
- Slowly pull the battery out of its slot, being careful not to damage any of the connectors in the process.

Step 3 — Hard Drive



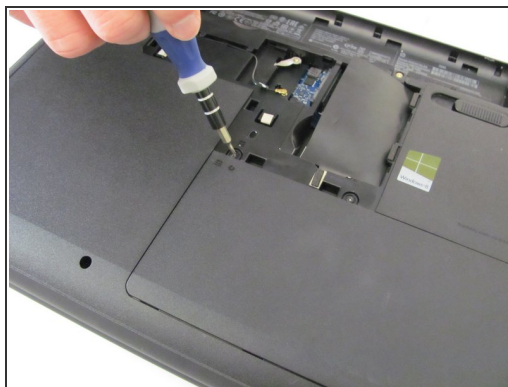
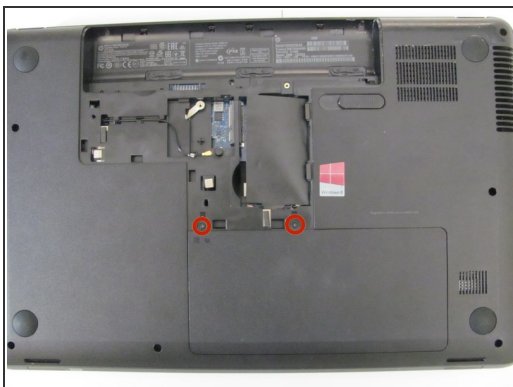
- Loosen the Phillips #00 screw securing the RAM compartment cover.
- ⚠ The screw is permanently attached to the RAM compartment cover. Do not try to remove it completely.

Step 4



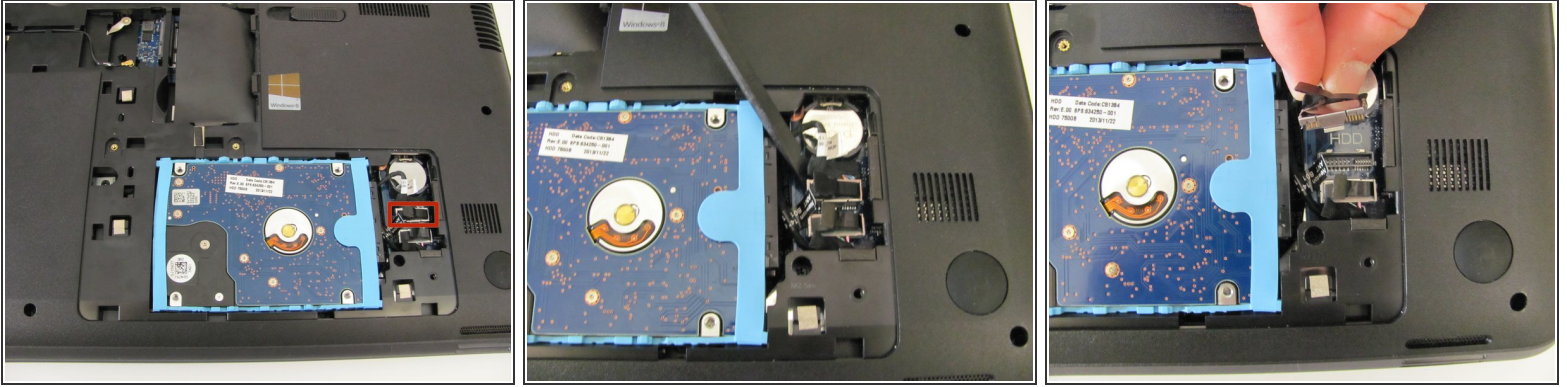
- Once the screw is sufficiently loosened, slowly unclip the RAM compartment cover from its slots in the plastic chassis.
- When unclipped completely, pull the compartment door out and away from the chassis.

Step 5



- Loosen the two Phillips #00 screws that are securing the hard drive compartment.
- ⚠ The screws are permanently attached to the hard drive compartment cover. Do not try to remove them completely.
- Once the screws are sufficiently loosened, disconnect the clips holding the cover in place and slowly pull the cover away from the plastic chassis.

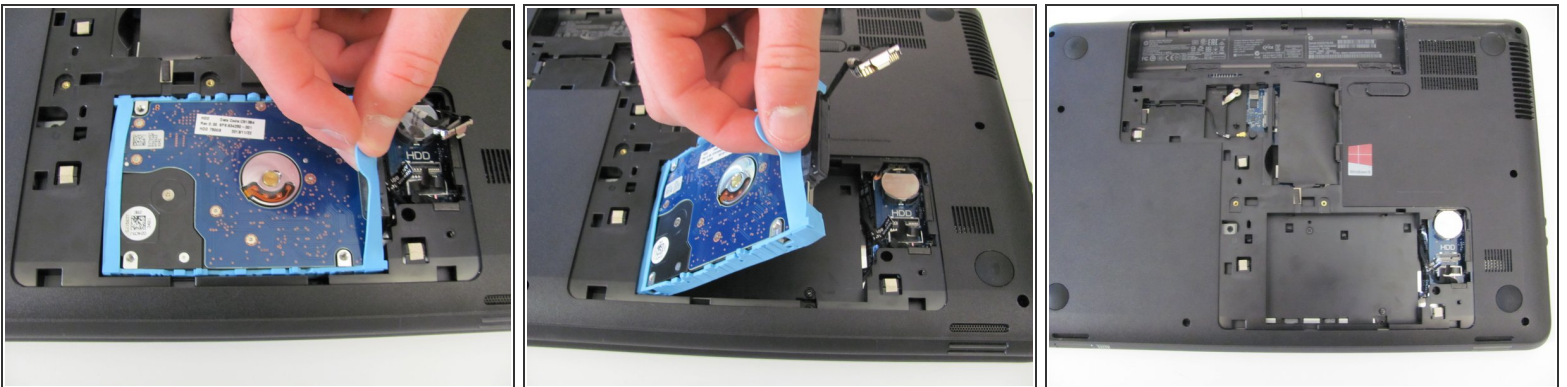
Step 6



- Using a spudger, disconnect the hard drive connecting cable. Use a slow, prying motion as if pulling a nail out of wood.

⚠ Be very gentle with the connecting cable and its respective port on the logic board. Both are very fragile and can be easily damaged.

Step 7



- Using your fingers, grab the blue tab on the right side of the hard drive and slowly pull upwards.
- Lift the hard drive out and away from its socket in the plastic chassis.

To reassemble your device, follow these instructions in reverse order.