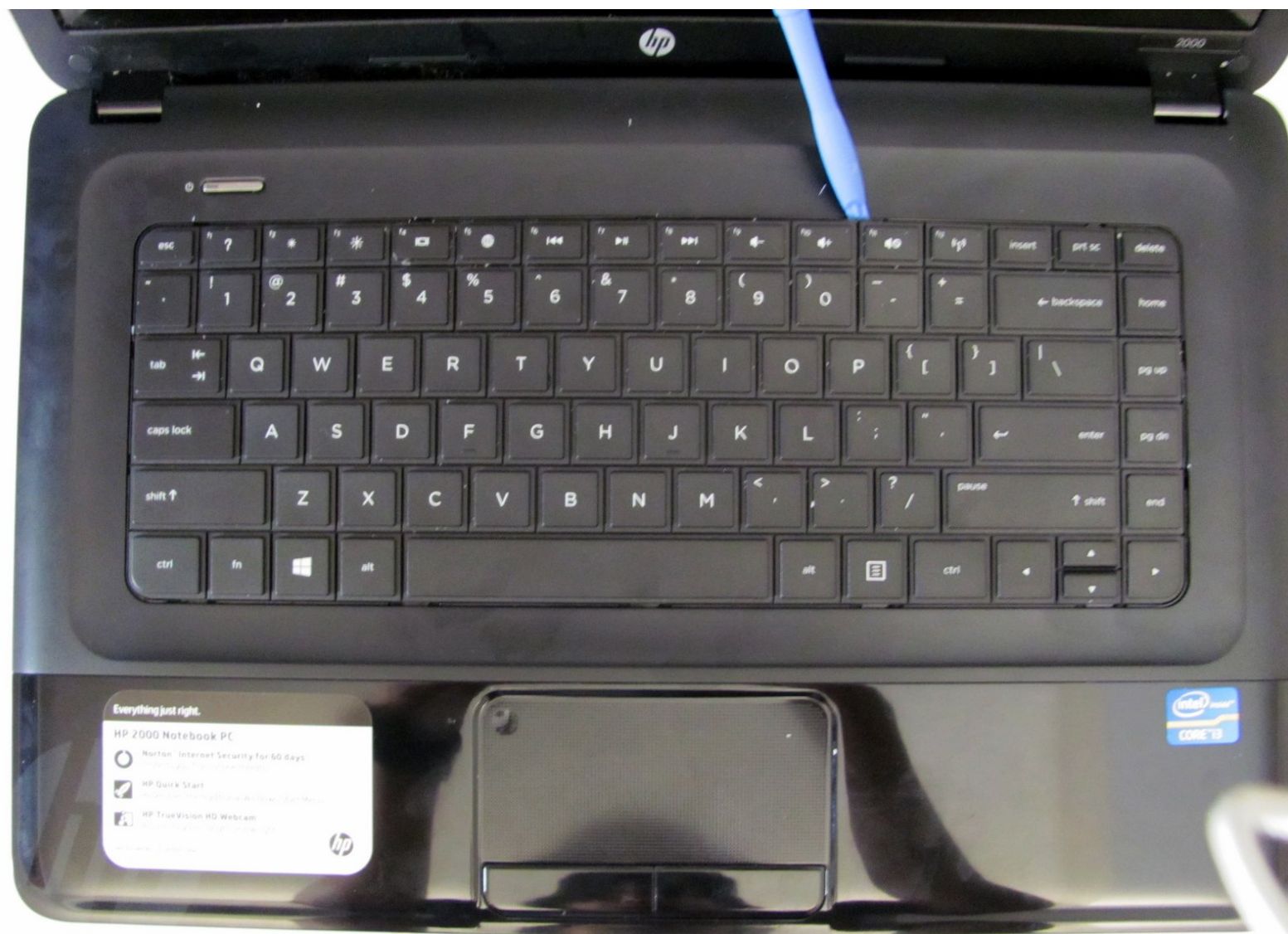




# HP 2000 - 2D22DX Keyboard Assembly Replacement

This guide will show the user how to remove the keyboard assembly and install a new one, if necessary.

Written By: Conor Most

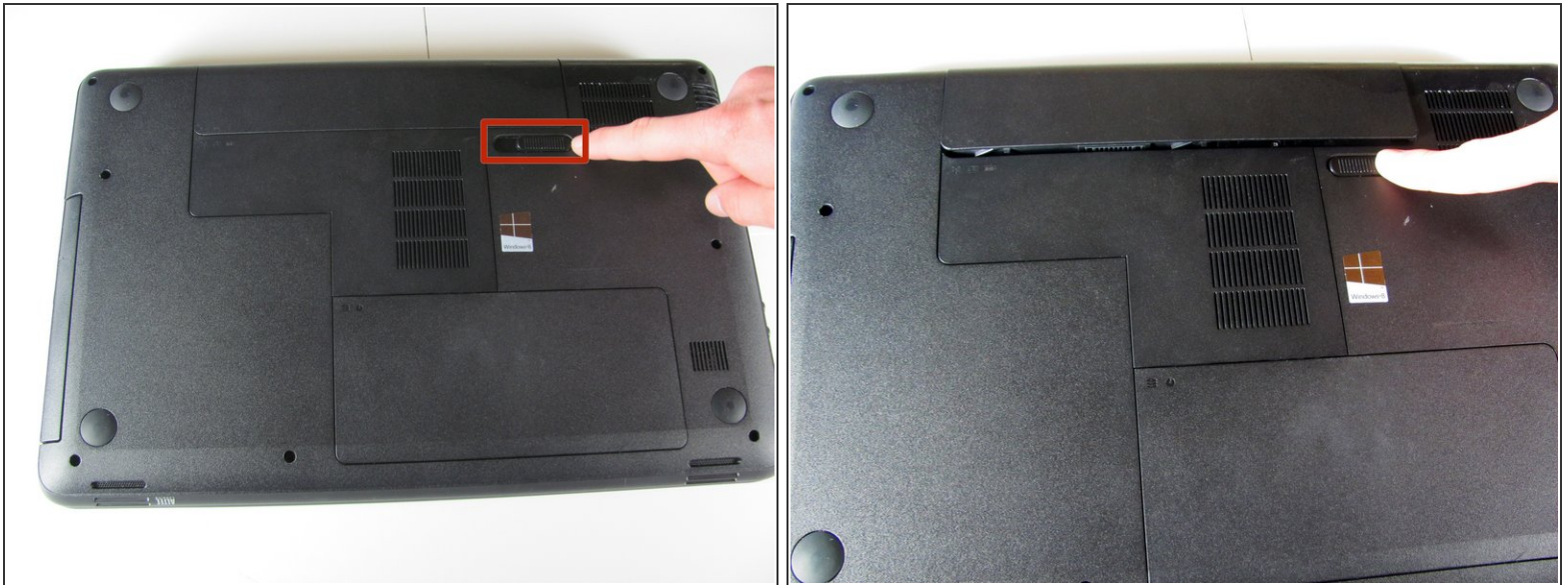




## TOOLS:

- [Phillips #00 Screwdriver](#) (1)
- [iFixit Opening Tools](#) (1)

## Step 1 — Battery



- Flip the device over and locate the battery compartment.
- Slide the battery release latch to the left until the battery is detached from its slot.
- A distinguishable *pop* will be heard when the battery is fully released.

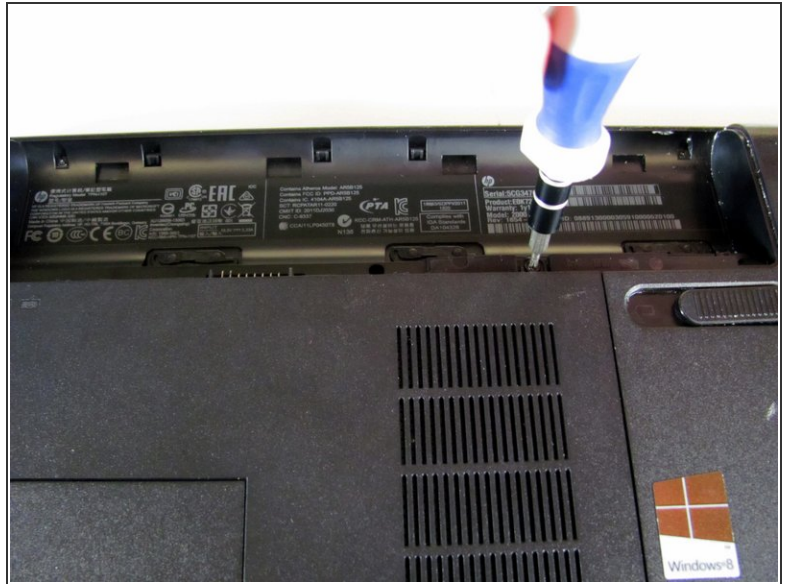


## Step 2



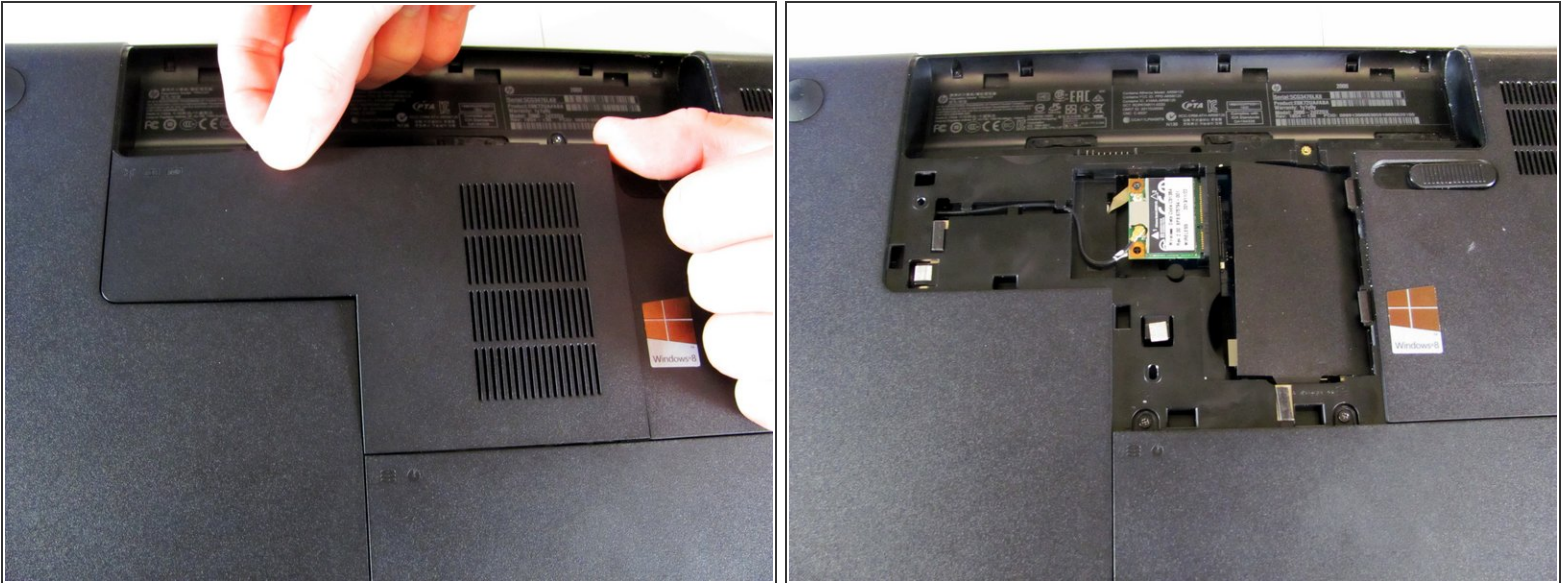
- Slowly pull the battery out of its slot, being careful not to damage any of the connectors in the process.

## Step 3 — Hard Drive



- Loosen the Phillips #00 screw securing the RAM compartment cover.
- ⚠ The screw is permanently attached to the RAM compartment cover. Do not try to remove it completely.

## Step 4



- Once the screw is sufficiently loosened, slowly unclip the RAM compartment cover from its slots in the plastic chassis.
- When unclipped completely, pull the compartment door out and away from the chassis.

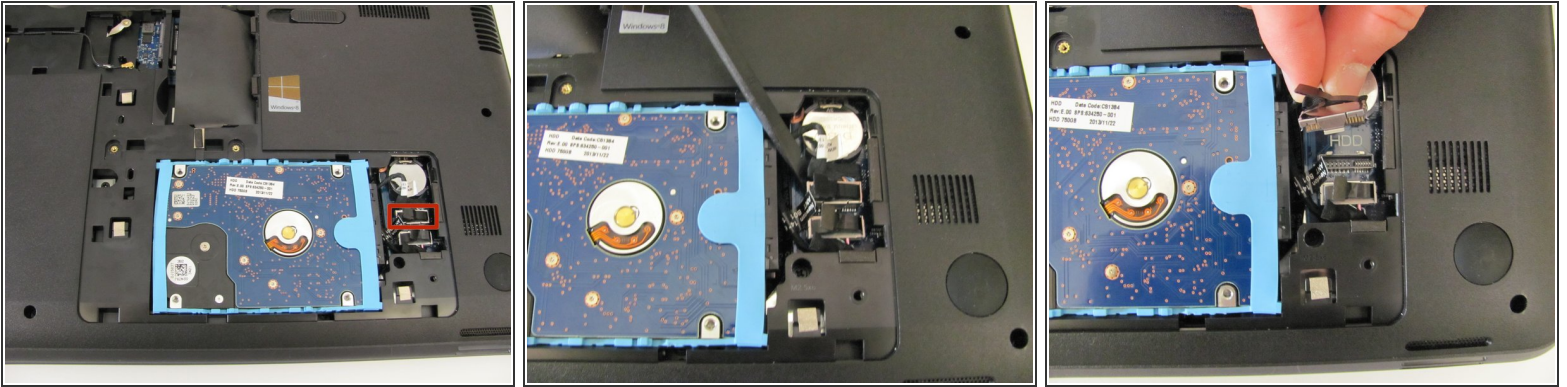
## Step 5




- Loosen the two Phillips #00 screws that are securing the hard drive compartment.
- ⚠ The screws are permanently attached to the hard drive compartment cover. Do not try to remove them completely.
- Once the screws are sufficiently loosened, disconnect the clips holding the cover in place and slowly pull the cover away from the plastic chassis.



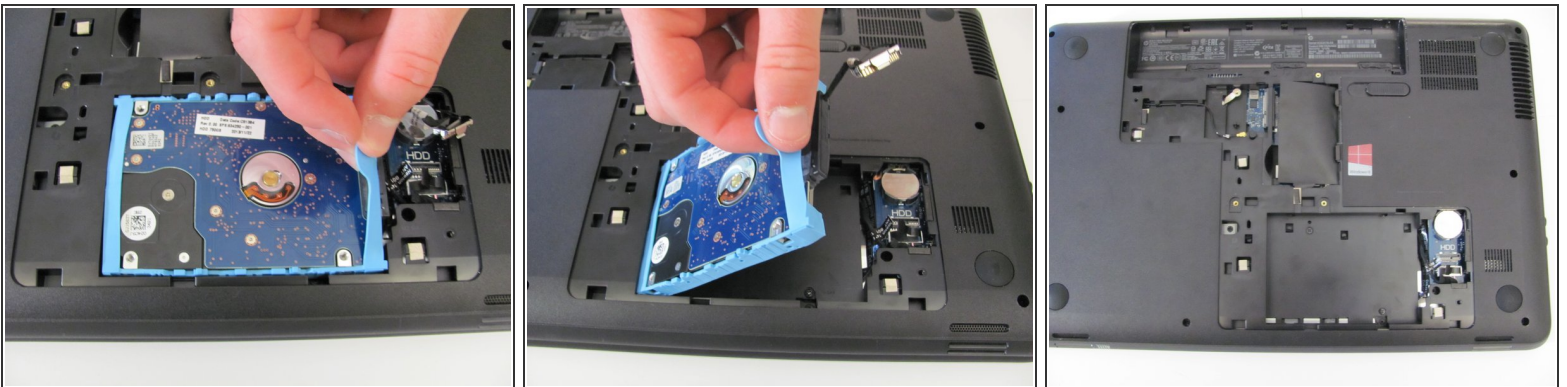
## Step 6



- Using a spudger, disconnect the hard drive connecting cable. Use a slow, prying motion as if pulling a nail out of wood.

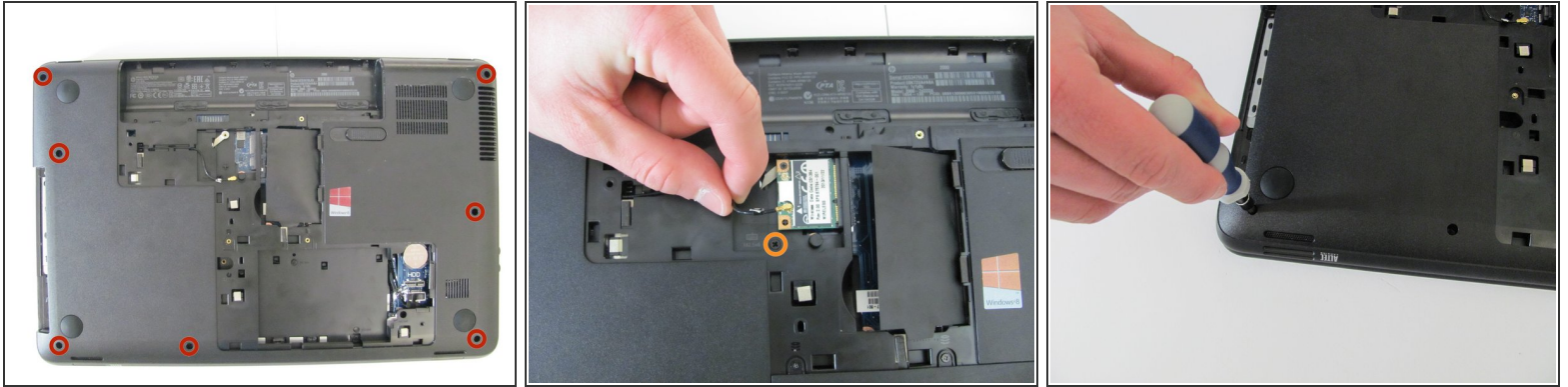
 Be very gentle with the connecting cable and its respective port on the logic board. Both are very fragile and can be easily damaged.

## Step 7



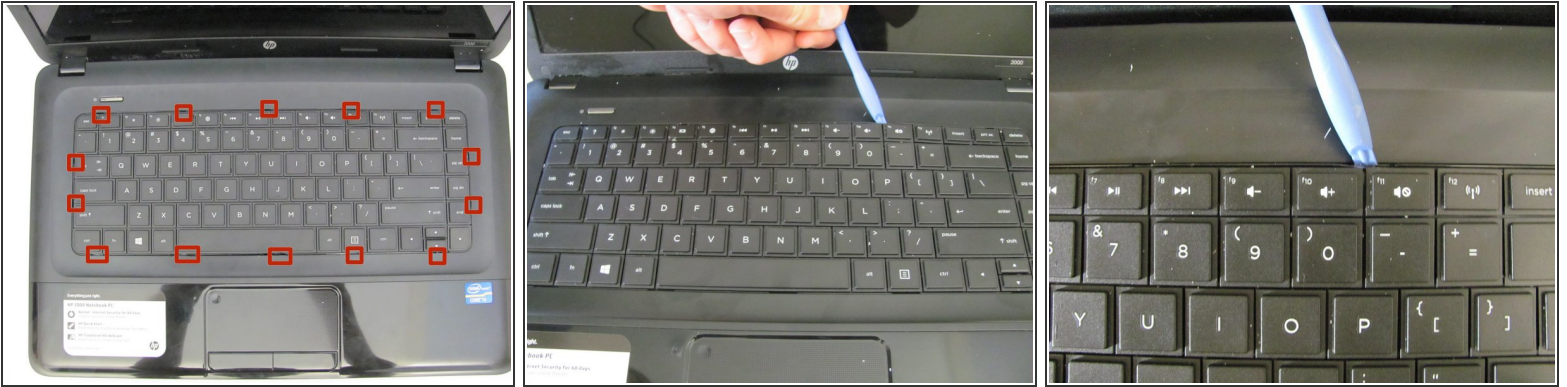
- Using your fingers, grab the blue tab on the right side of the hard drive and slowly pull upwards.
- Lift the hard drive out and away from its socket in the plastic chassis.

## Step 8 — Keyboard Assembly



- Locate all seven Phillips head screws around the borders of the plastic chassis.
  - Locate the small Phillips head screw next to the wireless chip.
  - Using a #00 Phillips head screwdriver, remove all eight screws listed above.
- i** These screws are known to get stuck on occasion. If this occurs, try using a slower unscrewing motion with a magnetic screwdriver. Then, utilize the magnetism of the screwdriver to simply pull the screw from its "well".

## Step 9




- Locate the fourteen clips in the small gap that runs between the keyboard assembly and the chassis.
  - Using a plastic opening tool, slowly press down the keyboard clips and begin pulling the keyboard upwards.
- ⚠ This step requires a little bit of force. The clips are quite sturdy and can take a lot of pressure but the keyboard itself is still possible to bend or damage.



## Step 10



 Do not try to remove the keyboard immediately. It is still connected to the motherboard by a ribbon cable that can be easily damaged.

- Once the keyboard is unscrewed, the ribbon cable below will also need to be disconnected.
- Lift up the "flap" securing the ribbon cable to their slot on logic board and slowly pull the cables away from their connections.
- Lift the keyboard assembly up and away from the plastic chassis.

To reassemble your device, follow these instructions in reverse order.