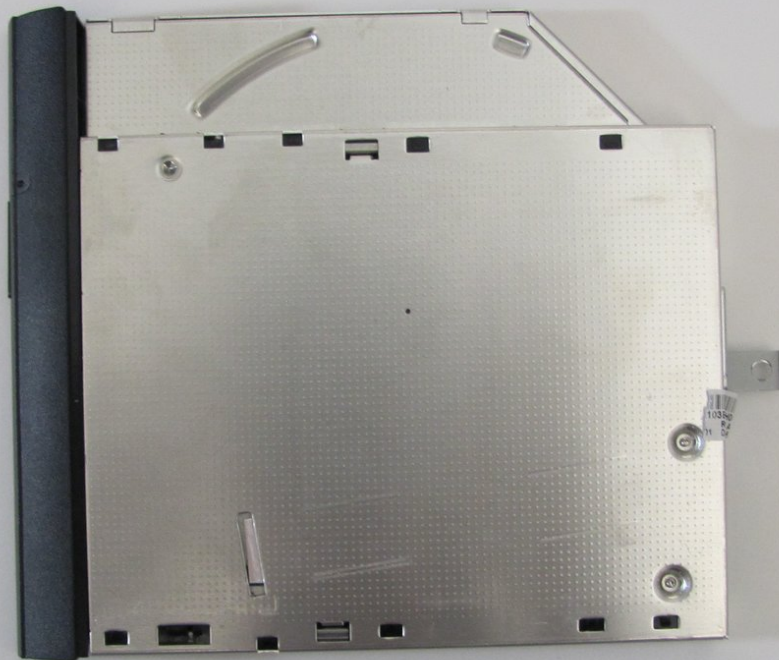




# HP 2000 - 2D22DX Optical Drive Replacement

This guide will show the user how to remove the optical drive and install a new one, if necessary.

Written By: Conor Most



---

## INTRODUCTION

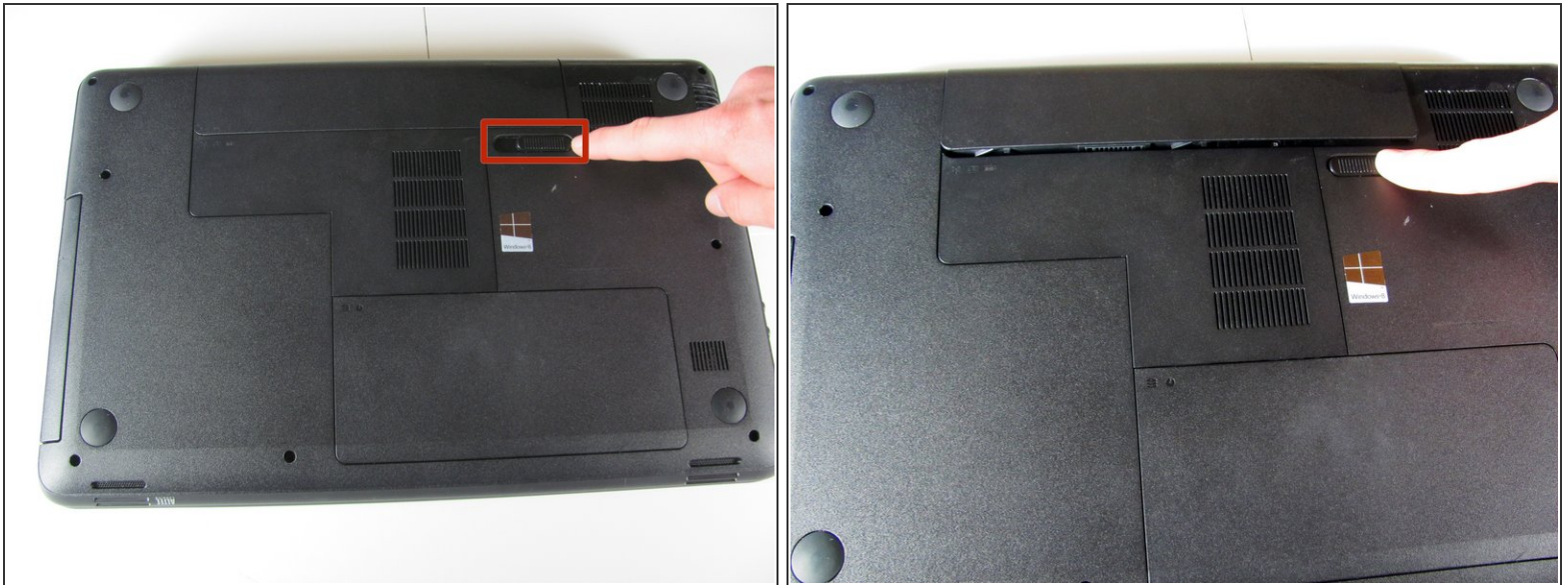
This guide will illustrate how to correctly remove and replace the optical drive of the HP 2000 - 2D22DX laptop. Partial disassembly of the laptop is required to access the drive.

---

### TOOLS:

- [Phillips #00 Screwdriver](#) (1)
-

## Step 1 — Battery



- Flip the device over and locate the battery compartment.
- Slide the battery release latch to the left until the battery is detached from its slot.
- A distinguishable *pop* will be heard when the battery is fully released.

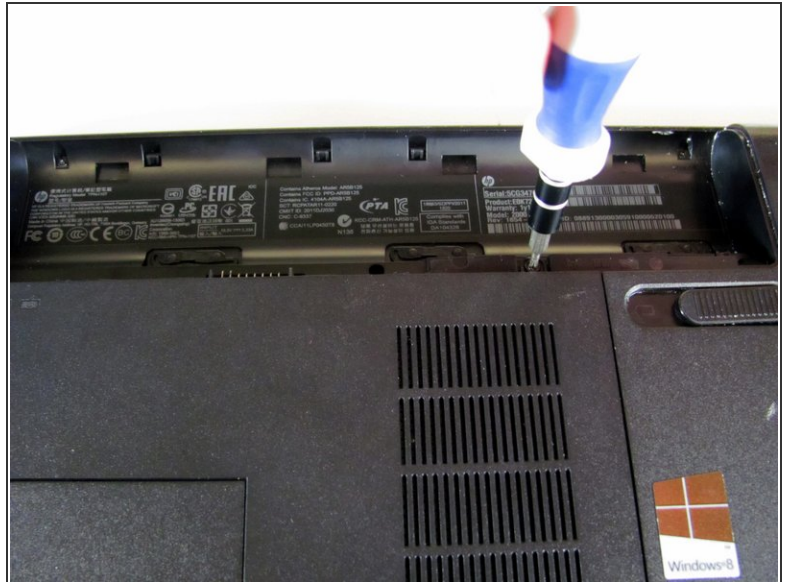


## Step 2



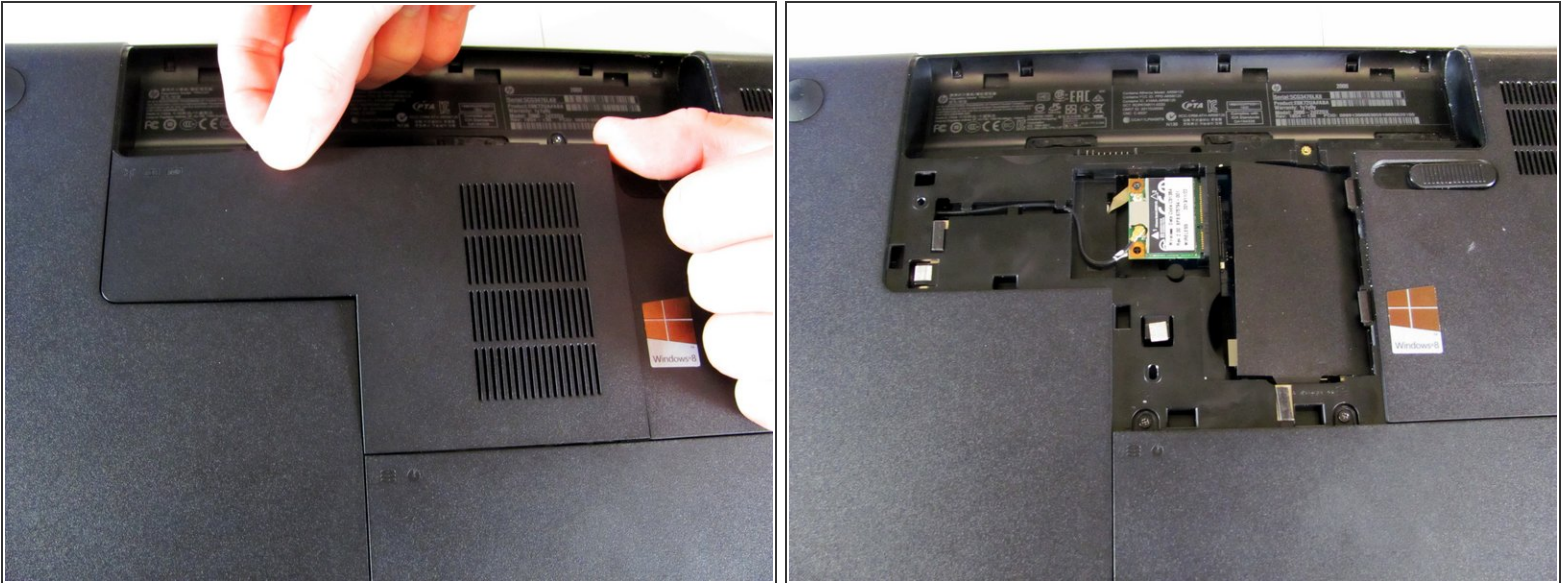
- Slowly pull the battery out of its slot, being careful not to damage any of the connectors in the process.

## Step 3 — Hard Drive



- Loosen the Phillips #00 screw securing the RAM compartment cover.
- ⚠ The screw is permanently attached to the RAM compartment cover. Do not try to remove it completely.

## Step 4



- Once the screw is sufficiently loosened, slowly unclip the RAM compartment cover from its slots in the plastic chassis.
- When unclipped completely, pull the compartment door out and away from the chassis.

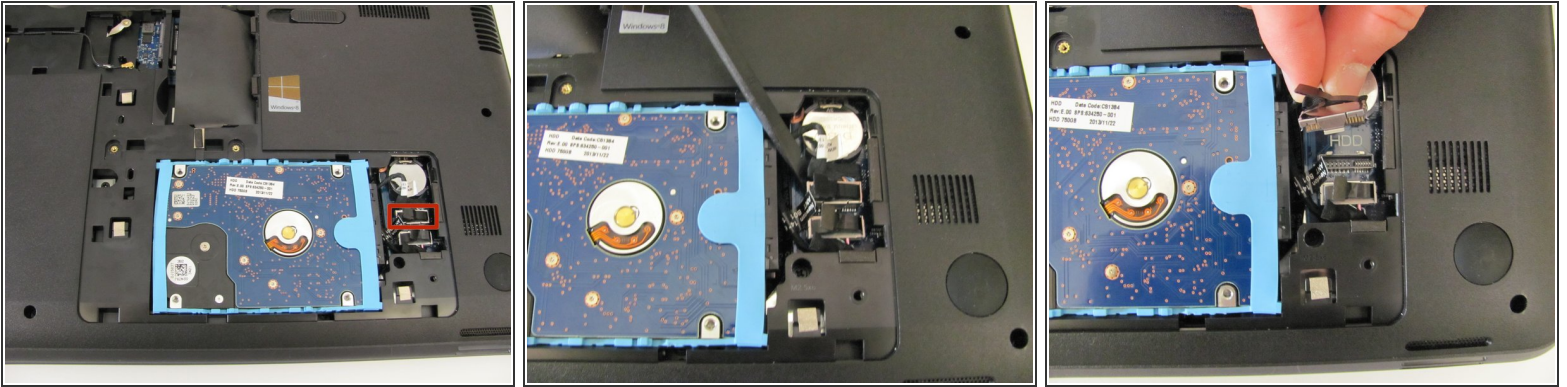
## Step 5




- Loosen the two Phillips #00 screws that are securing the hard drive compartment.
- ⚠ The screws are permanently attached to the hard drive compartment cover. Do not try to remove them completely.
- Once the screws are sufficiently loosened, disconnect the clips holding the cover in place and slowly pull the cover away from the plastic chassis.



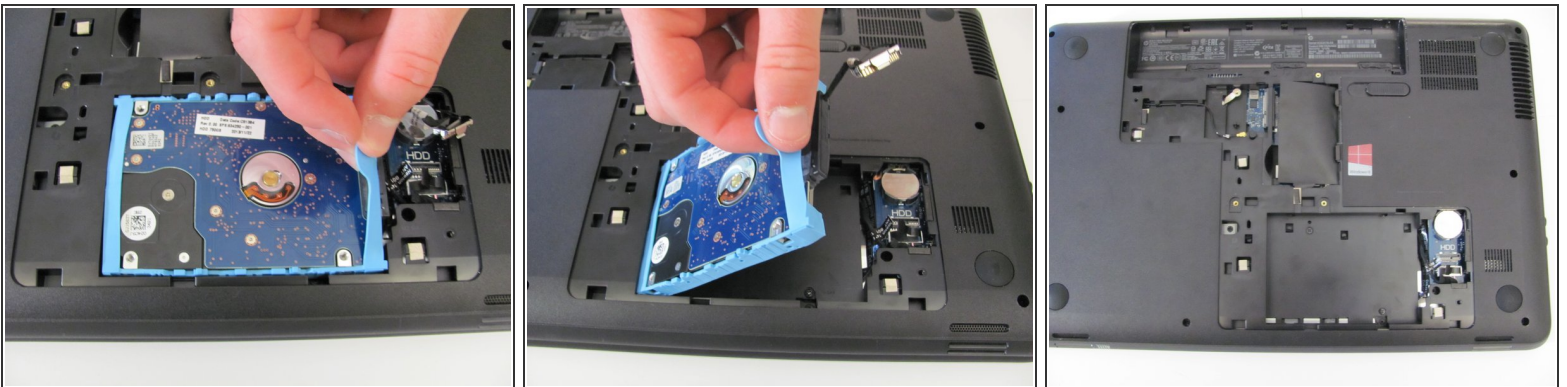
## Step 6



- Using a spudger, disconnect the hard drive connecting cable. Use a slow, prying motion as if pulling a nail out of wood.

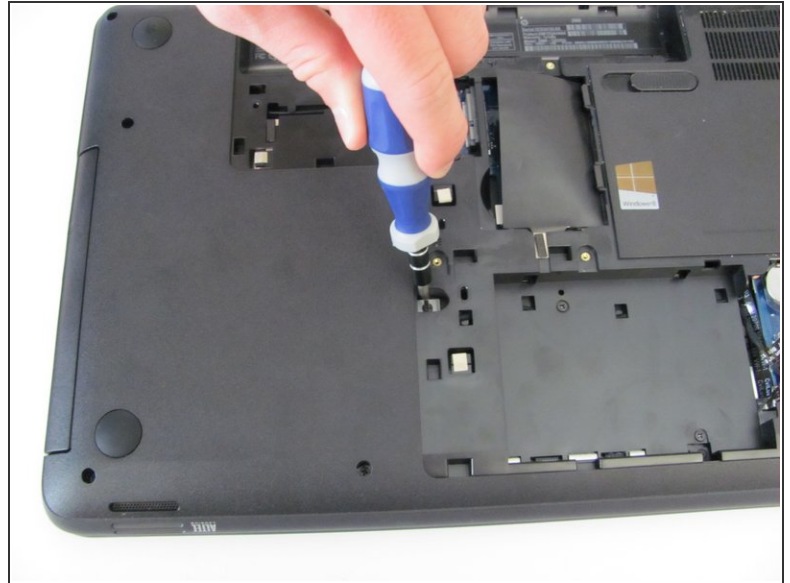
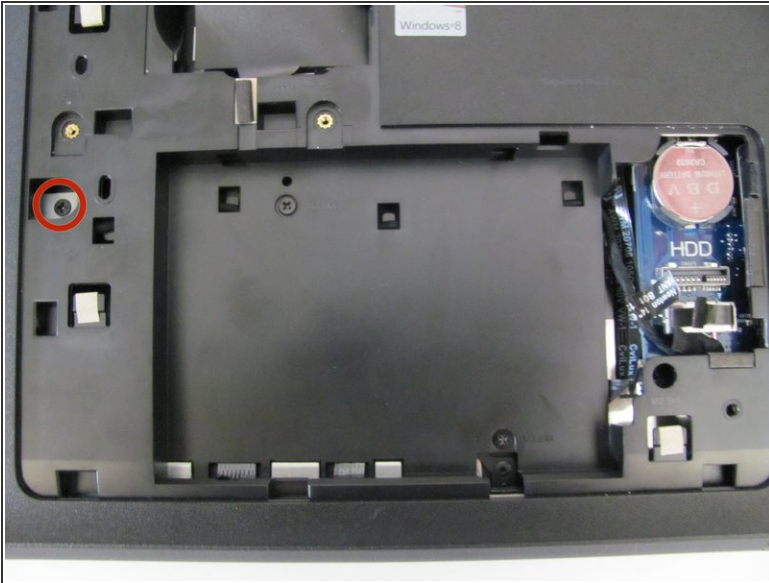
 Be very gentle with the connecting cable and its respective port on the logic board. Both are very fragile and can be easily damaged.

## Step 7



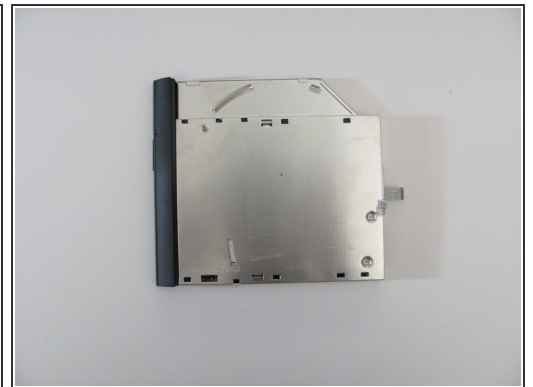
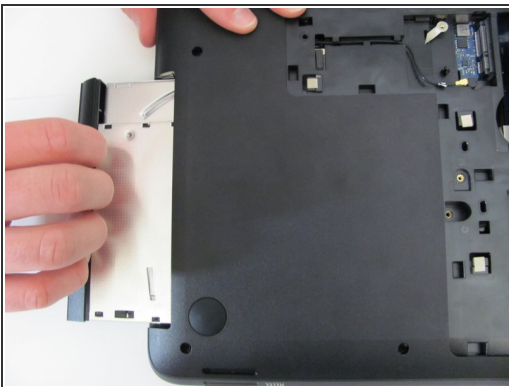
- Using your fingers, grab the blue tab on the right side of the hard drive and slowly pull upwards.
- Lift the hard drive out and away from its socket in the plastic chassis.

## Step 8 — Optical Drive



- Locate the Phillips-head screw on the left side of the hard drive recess, indicated by a red circle.
- Use a #00 Phillips head screwdriver to remove the small screw. Consider using a magnetized screwdriver.

## Step 9



- Once the securing screw is removed, the optical drive can be pulled from its slot easily.
- Use your fingers to pull the optical drive away slowly from its position in the plastic chassis.

⚠ The optical drive should slide out very easily. If you feel resistance, do not pull too hard. Something may be caught, and you might damage the optical drive's connections.

To reassemble your device, follow these instructions in reverse order.