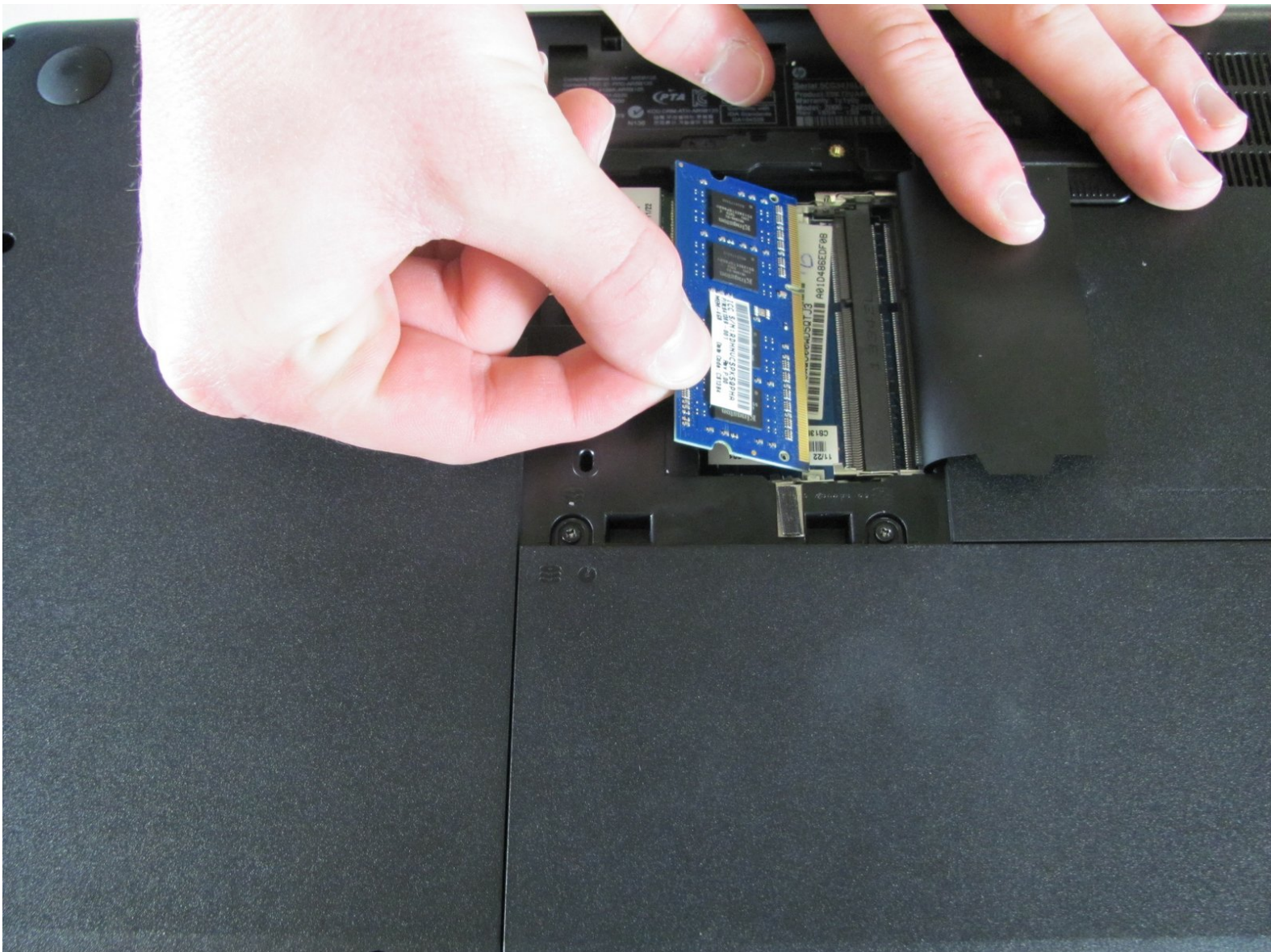




HP 2000 - 2D22DX RAM Replacement

This guide will show the user how to remove the device's RAM and install new RAM.

Written By: Conor Most



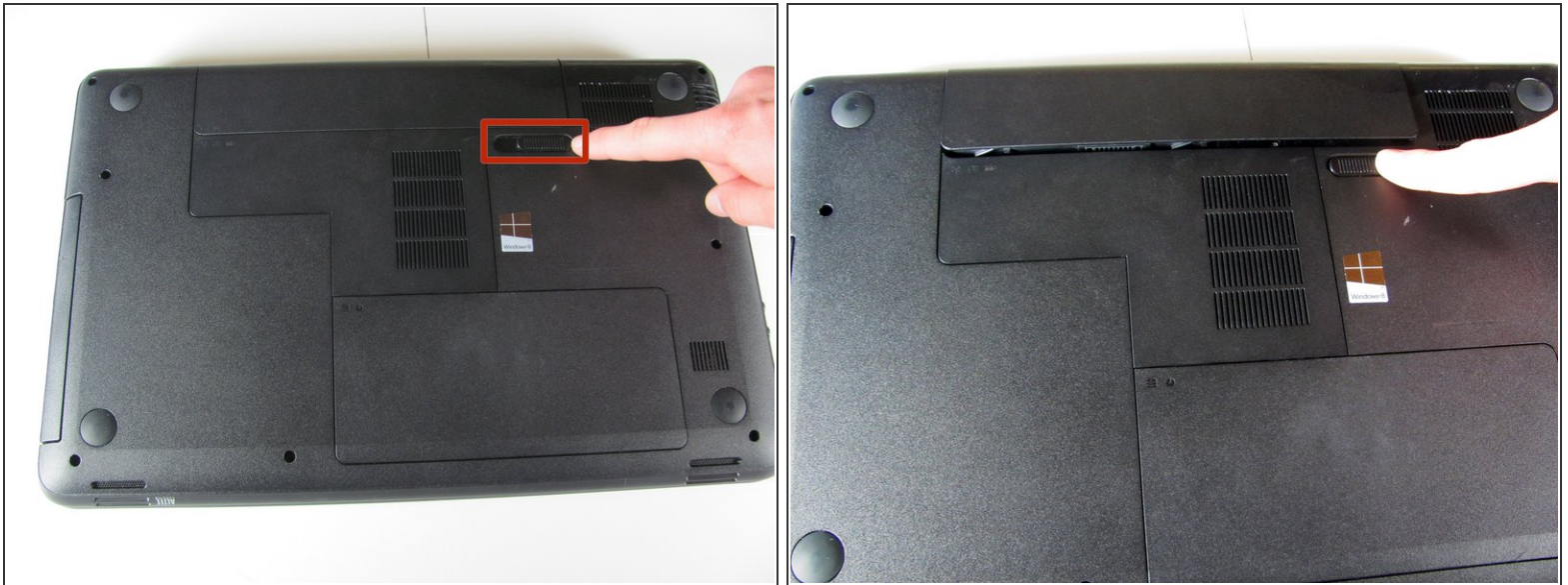
INTRODUCTION

Directions for the removal and replacement of the RAM module in a HP 2000 - 2D22DX laptop computer. When adding more RAM, always replace the existing modules to ensure compatibility between modules.

TOOLS:

- [Phillips #00 Screwdriver](#) (1)
-

Step 1 — Battery



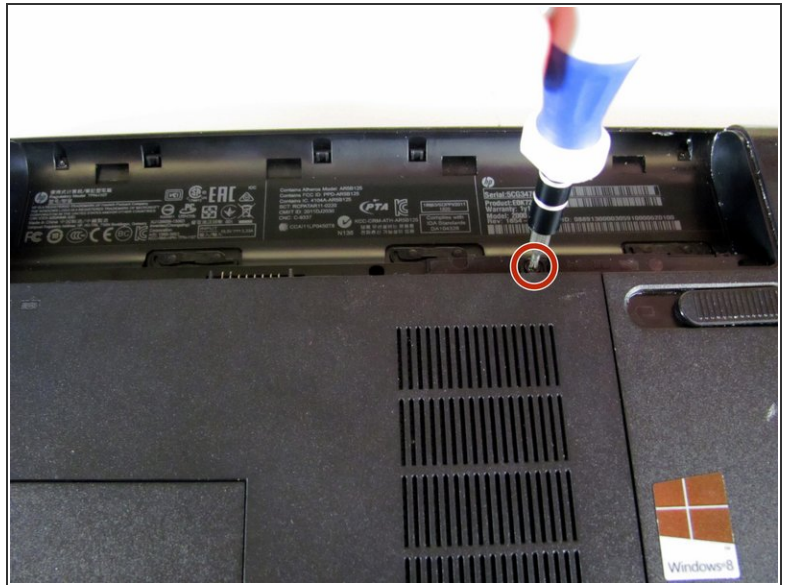
- Flip the device over and locate the battery compartment.
- Slide the battery release latch to the left until the battery is detached from its slot.
- A distinguishable *pop* will be heard when the battery is fully released.

Step 2



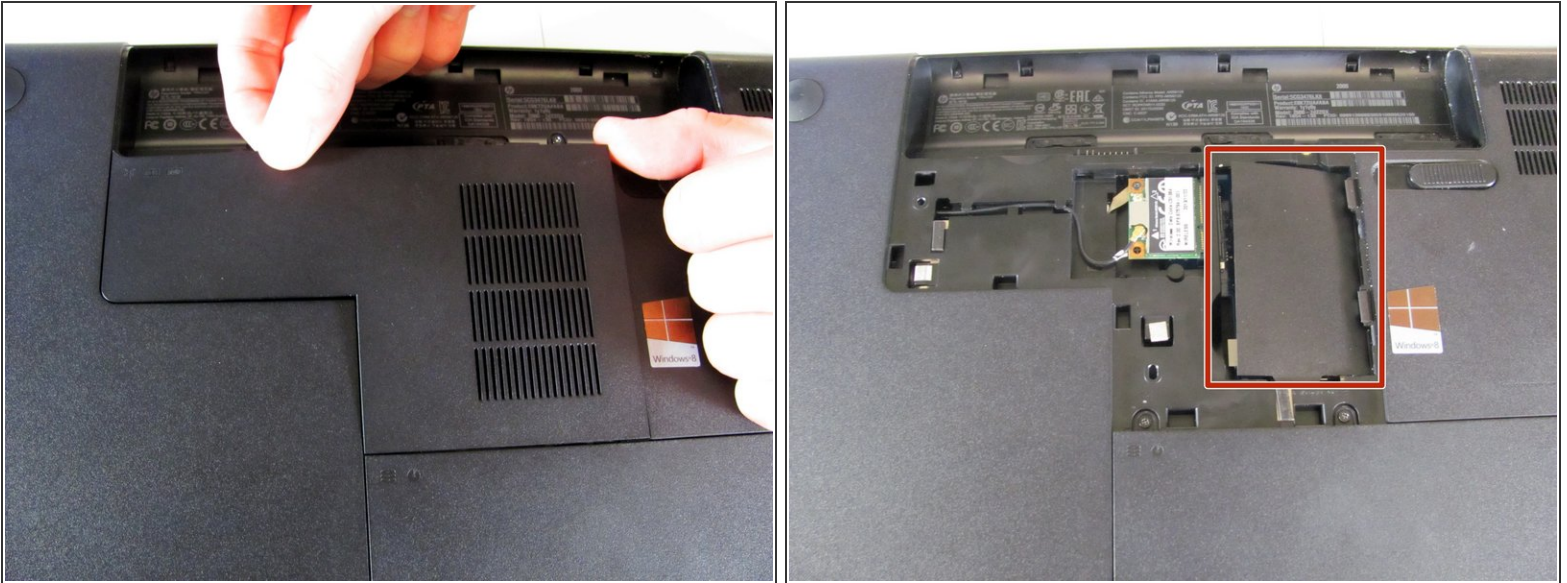
- Slowly pull the battery out of its slot, being careful not to damage any of the connectors in the process.

Step 3 — RAM



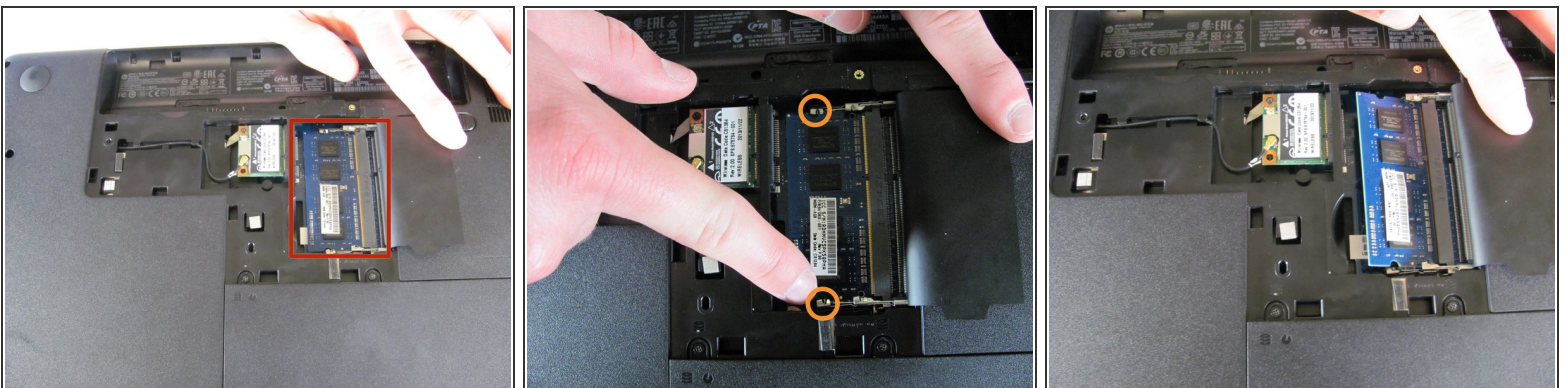
- After battery removal, the RAM compartment cover is exposed.
 - Locate the Phillips head screw seen in the second picture. It secures the RAM compartment to the plastic chassis.
 - Loosen the screw that is securing the RAM compartment with a Phillips #00 screwdriver.
- ⚠ The screw is permanently attached to the RAM compartment cover. Do not try to remove it completely.

Step 4



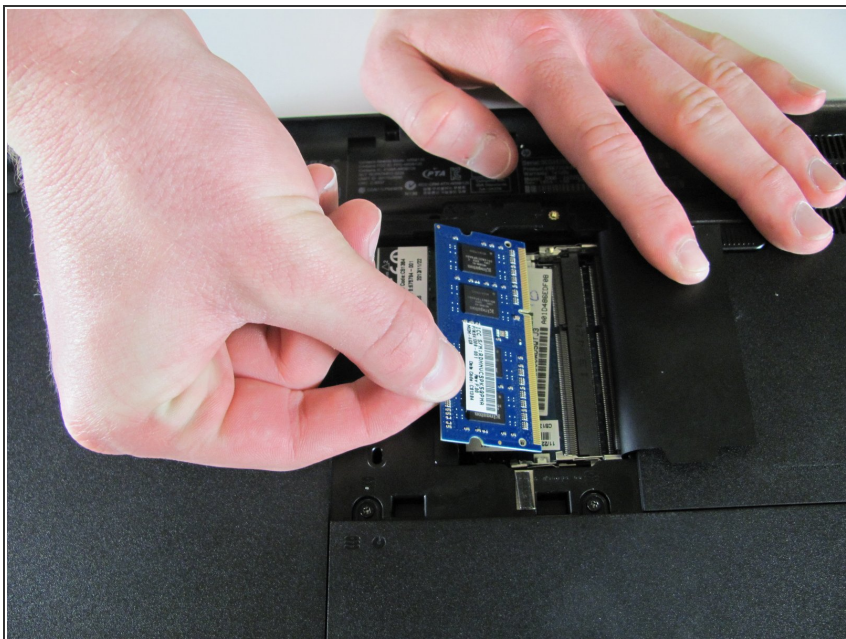
- Once the screw is sufficiently loosened, gently unclip the RAM compartment cover from its slots in the plastic chassis.
- Pull the compartment door out and away from the chassis, exposing the black film covering the RAM module.

Step 5




- Move the black plastic film to the side to locate the RAM slots.
- Locate the metal clips holding the RAM card in place.
- Using your fingers, push the metal clips out and away from the RAM module until the RAM module pops up at a 45 degree angle.

Step 6



- Hold the black plastic film away from the RAM slots. Grasp the edge of the RAM card and slide it out at a 45 degree angle.

 Maintain the 45 degree angle of the RAM card until all pins are disengaged. Failure to do so may result in pin breakage.

To reassemble your device, follow these instructions in reverse order.