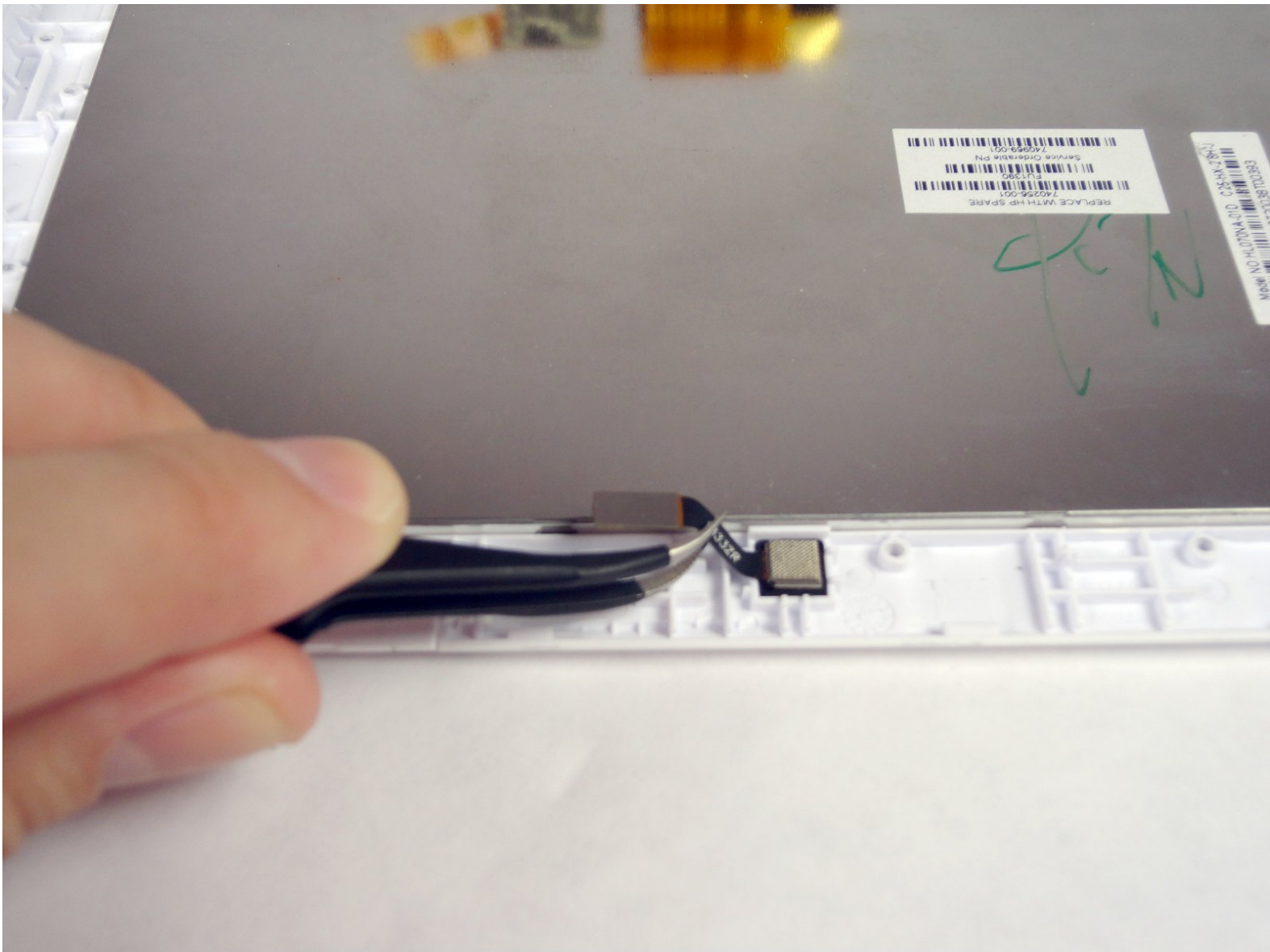




HP 7 1800 Front Facing Camera Replacement

This guide will help you replace the front facing camera of your HP 7 1800.

Written By: Trevor Shumate



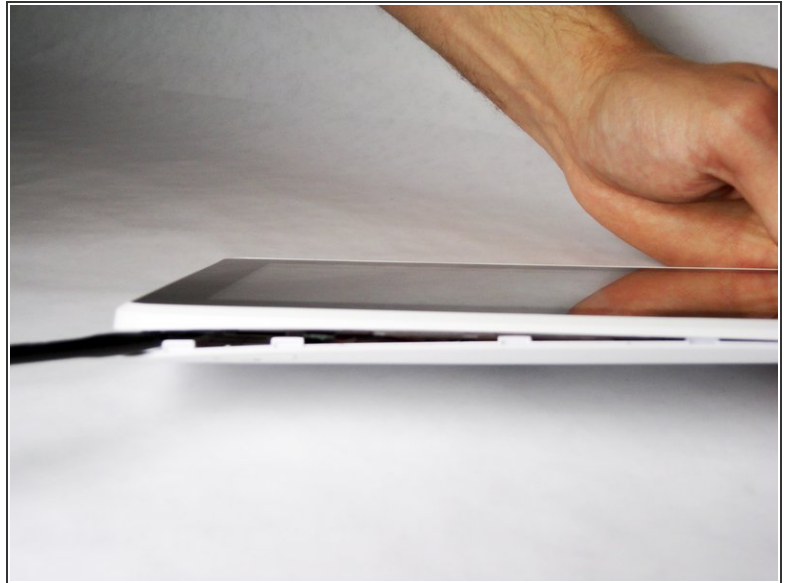
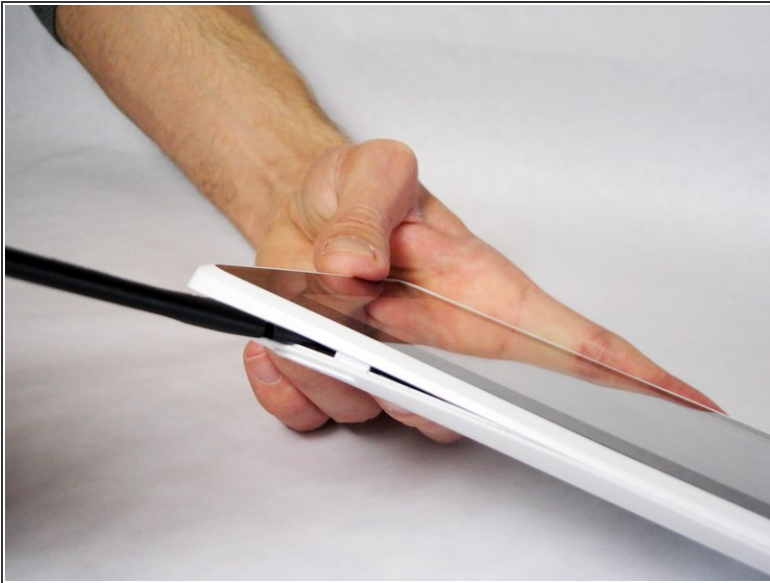
INTRODUCTION

In this guide, you will be using a Phillips #00 Precision Screwdriver to remove the front facing camera.

TOOLS:

- [Spudger](#) (1)
 - [Magnetic Mat](#) (1)
 - [Tweezers](#) (1)
 - [Phillips #00 Screwdriver](#) (1)
-

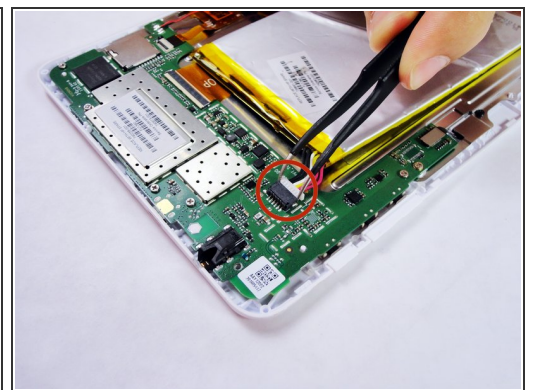
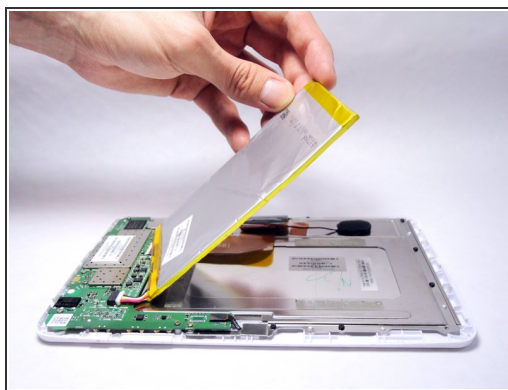
Step 1 — Remove the back panel



- Carefully insert a Spudger into one of the corners of the tablet.
- Slide the Spudger along the edge popping the tabs out along the way.

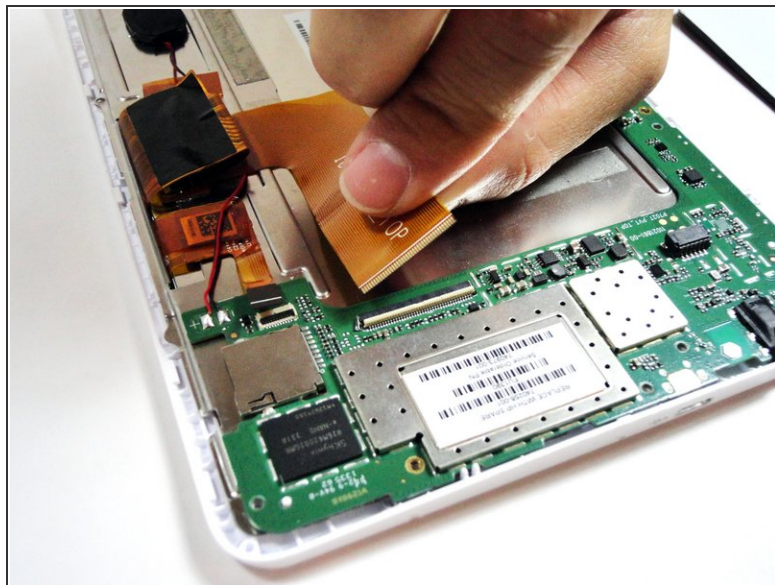
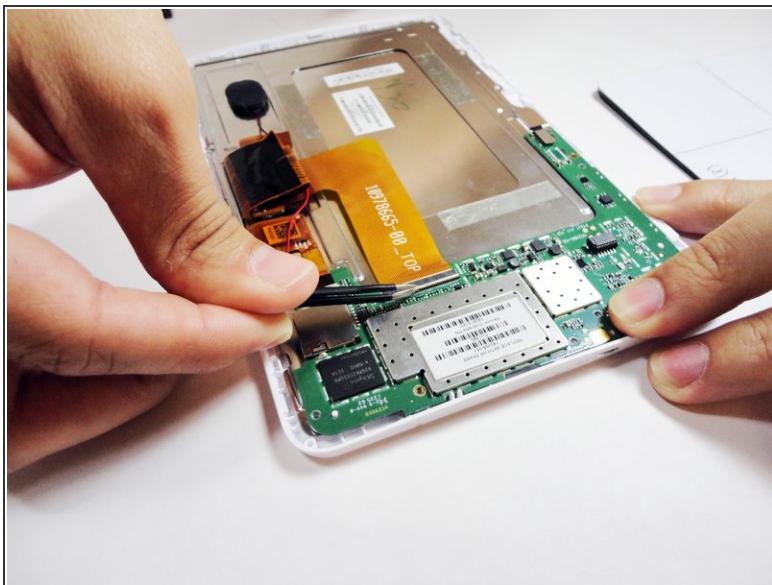
⚠ Be careful not to break the tabs.

Step 2 — Remove the battery



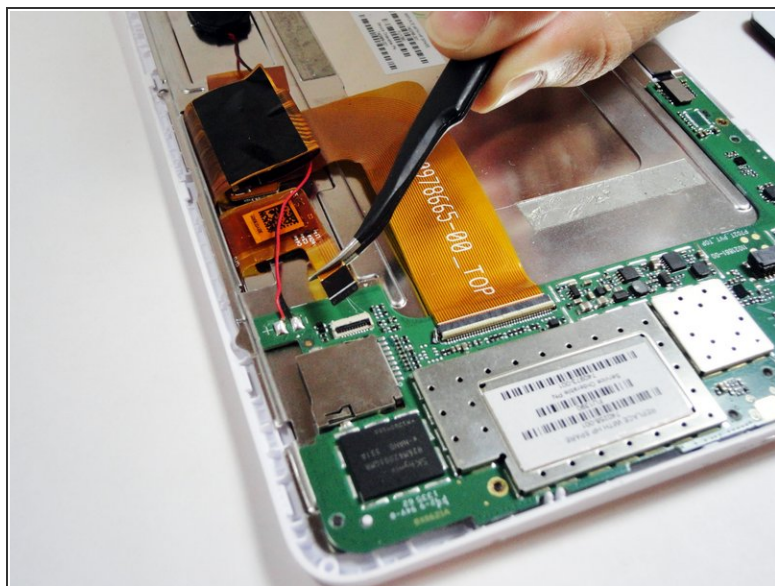
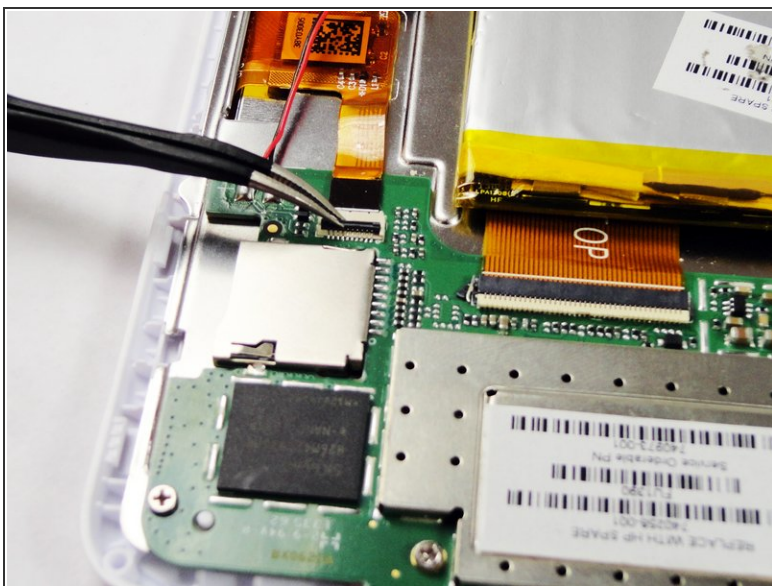
- Slide the Spudger under the battery to lift it off the adhesive.
- Gently pull the cable connection from the motherboard using tweezers.

Step 3 — Remove the large ribbon cable



- Remove the larger ribbon cable by gently flipping the beige latch and pulling it out with tweezers.

Step 4 — Remove the smaller ribbon cable



- Remove the smaller ribbon cable by gently flipping the black latch and pulling it out with tweezers.

Step 5 — Unscrew the 7 silver screws from the logic board



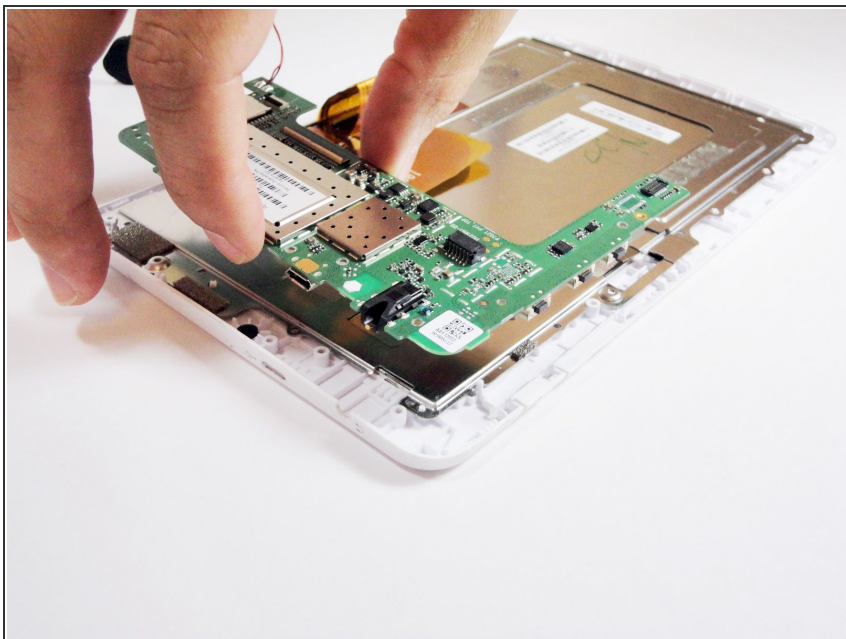
- Remove the following 7 screws:
 - Six 4.17mm Phillips #00 around the motherboard.
 - One 2.67mm Phillips #00 next to the front facing camera.
- ⓘ The 2.67mm screw circled in yellow is notably shorter than the other 6 screws circled in red.

Step 6 — Unplug the front facing camera from the logic board



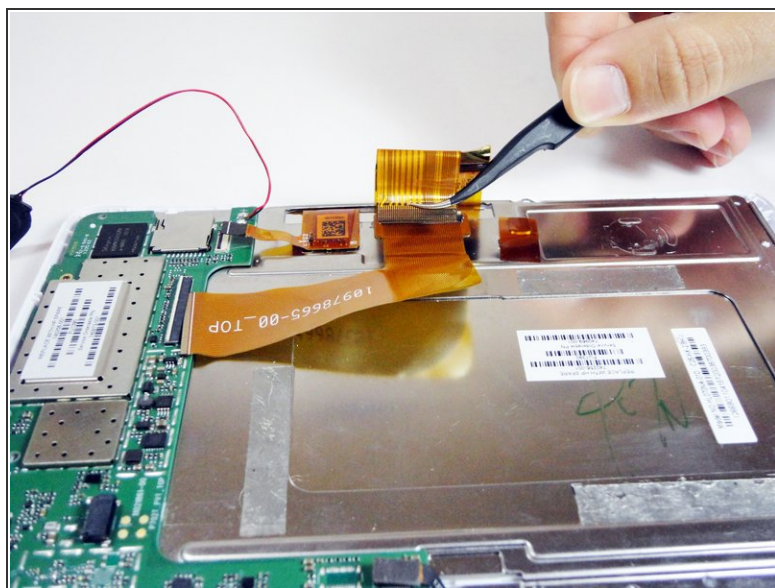
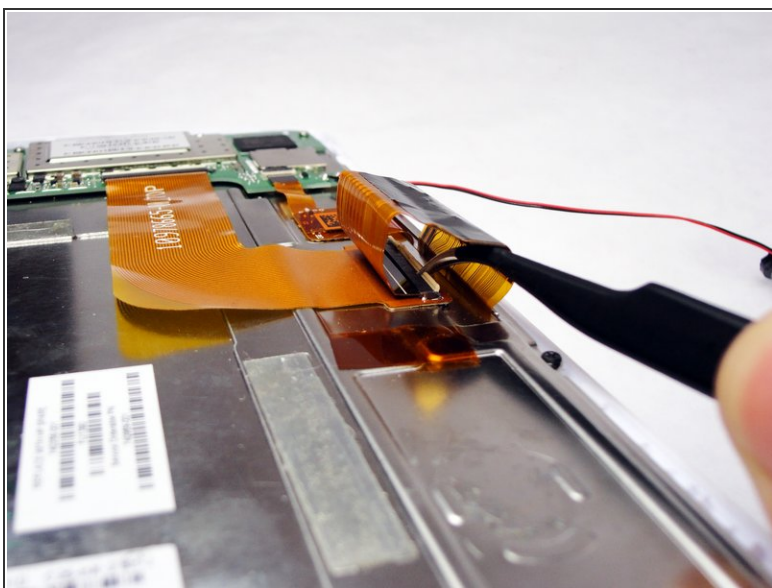
- Gently pry the front facing camera plug up and off of the motherboard.

Step 7 — Remove the logic board



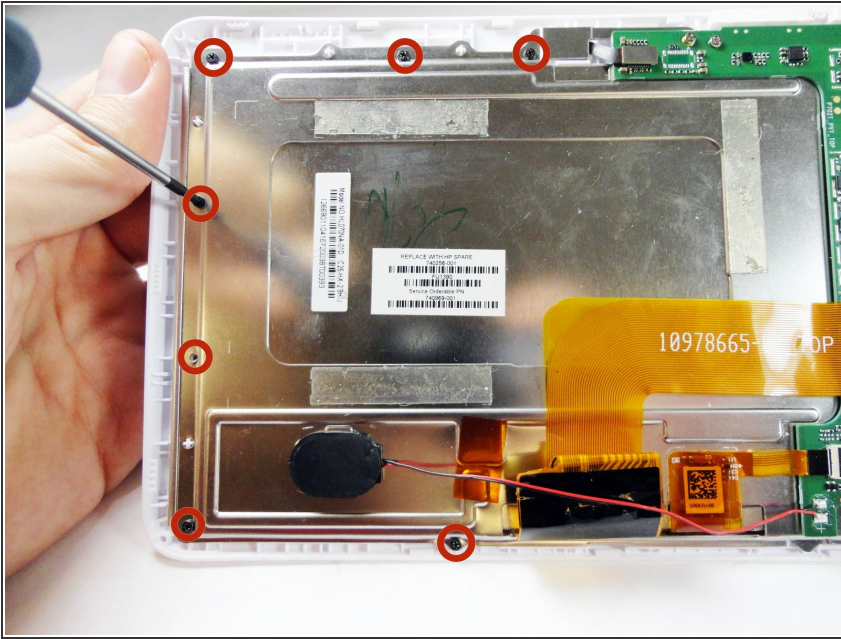
- Carefully lift the motherboard directly up.

Step 8 — Remove the ribbon cable attached to the metal plate



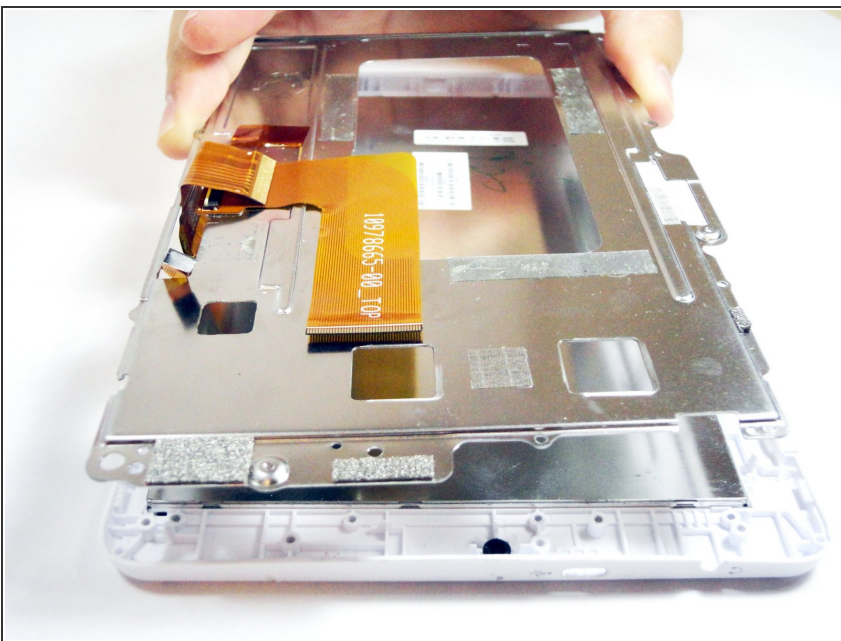
- On the metal plate inside of the device, there is a ribbon cable in a loop. Flip the white tab and pull the cable out.

Step 9 — Unscrew the 7 black screws on the metal plate



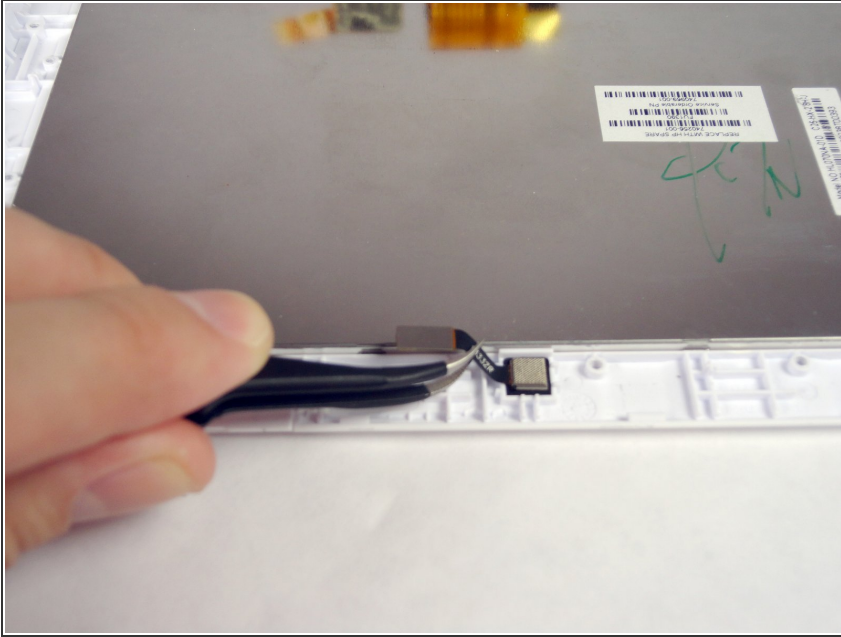
- Unscrew the following black screws:
 - Seven 2.82mm Phillips #00 around the metal casing.

Step 10 — Remove the metal plate



- Gently lift the metal plate directly up.

Step 11 — Remove the camera



- Gently remove the camera from the device with tweezers by lifting it up and out of its square hole.

To reassemble your device, follow these instructions in reverse order.