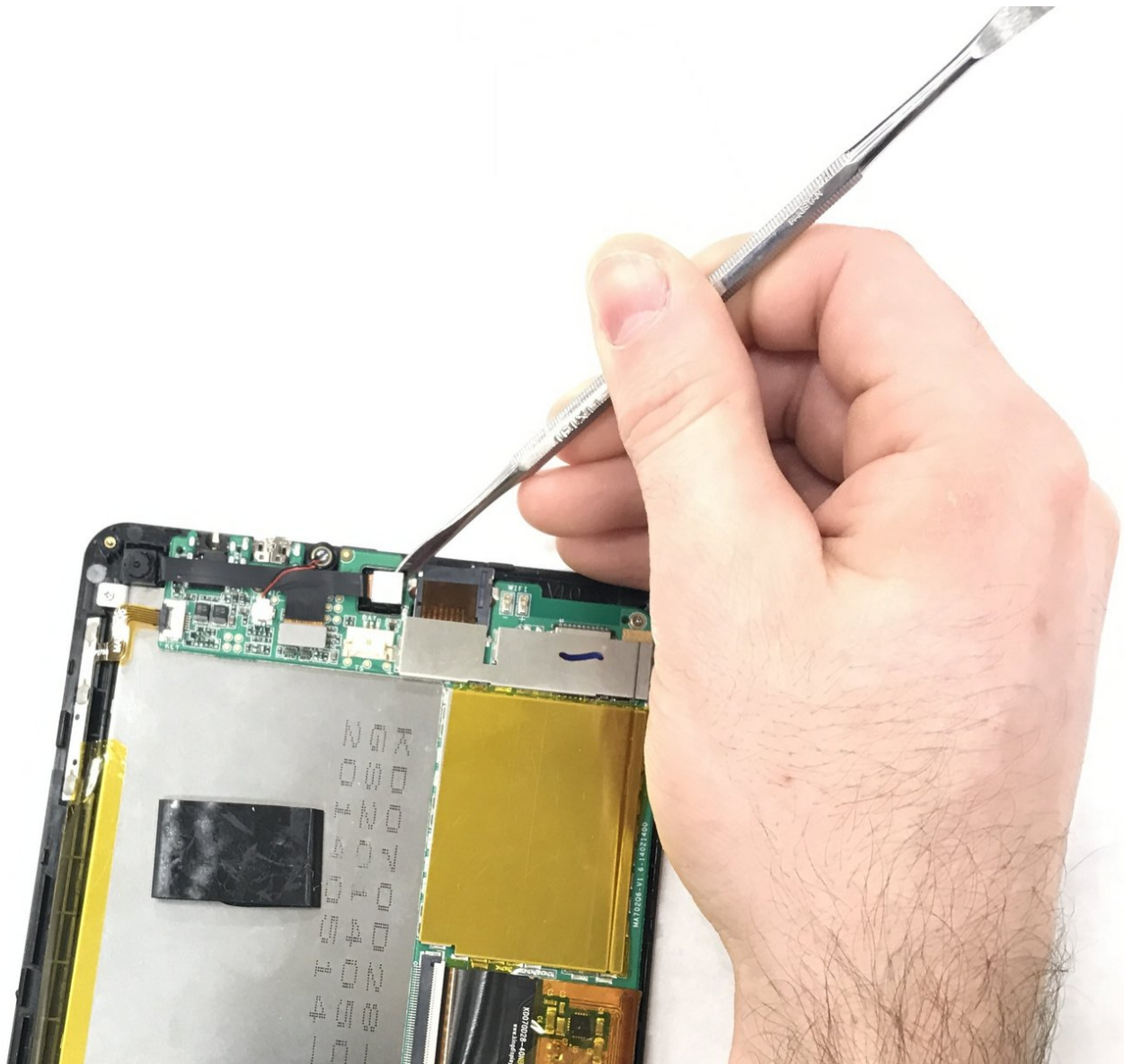




HP 7 Plus 1302 Motherboard Replacement

HP 7 Plus 1302 Motherboard Replacement

Written By: Damaris Torres-Crespo

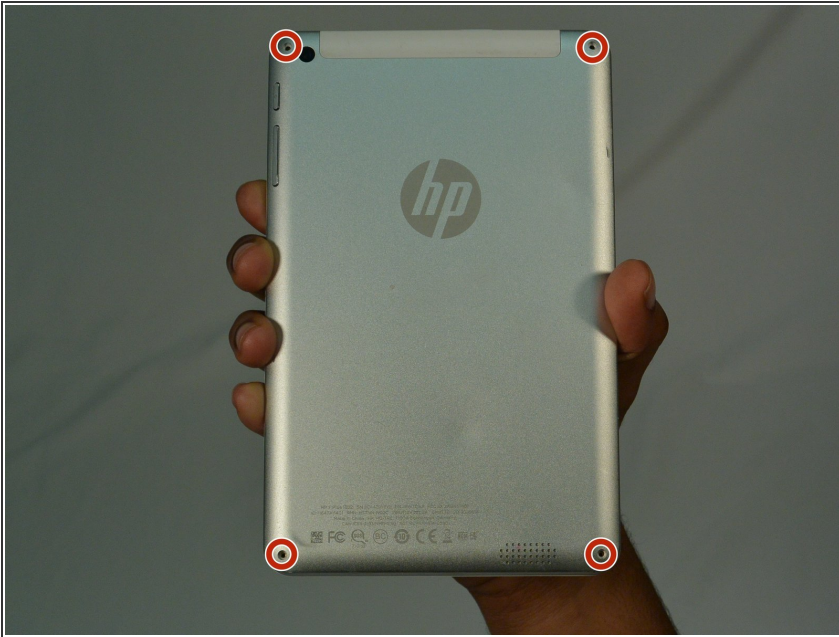




TOOLS:

- [iFixit Opening Tools](#) (1)
 - [T5 Torx Screwdriver](#) (1)
 - [Spudger](#) (1)
 - [Metal Spudger](#) (1)
 - [Phillips #000 Screwdriver](#) (1)
-

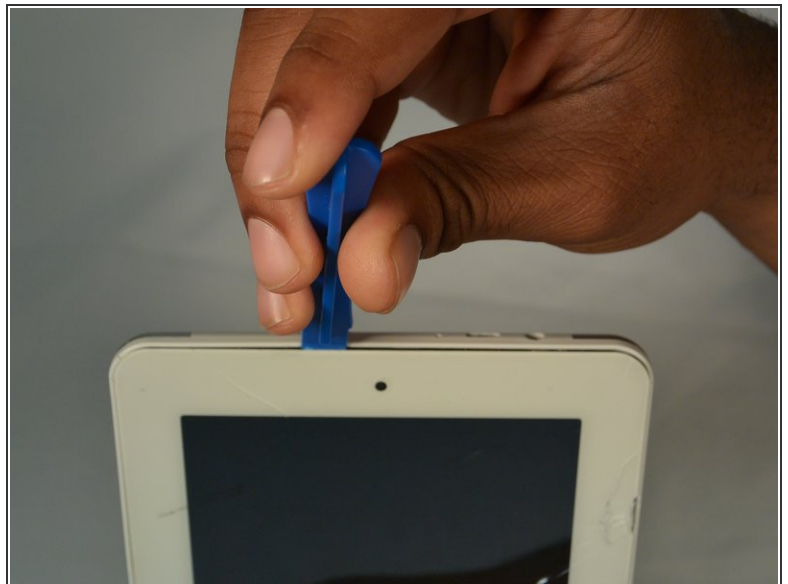
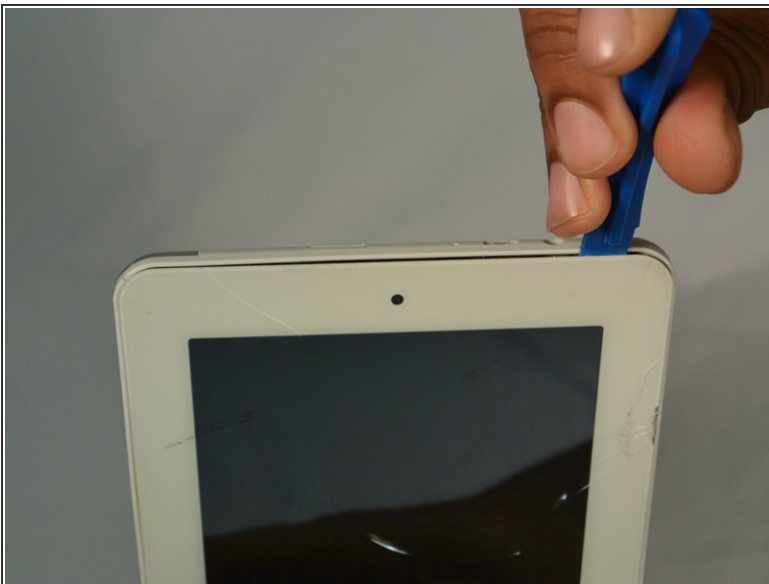
Step 1 — Back Cover



- Using the T5 Torx Screwdriver, remove the T5x3mm screws located in all 4 corners.

⚠ Device should be turned off and unplugged before starting the replacements.

Step 2



- Use the plastic opening tool to push in between the front and the back of the tablet.
- Slide the plastic opening tool around all 4 sides of the tablet to separate the back cover.

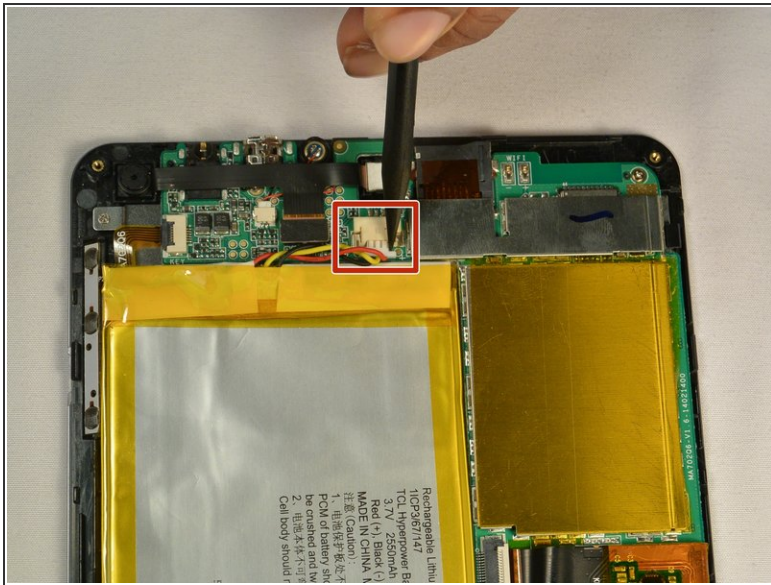
⚠ Be careful when you are trying to remove the back as it can damage the screen if you force it too much.

Step 3



- Continue sliding the plastic opening tool around the tablet until all 4 sides are separated from each other.
- Remove the back cover.

Step 4 — Battery



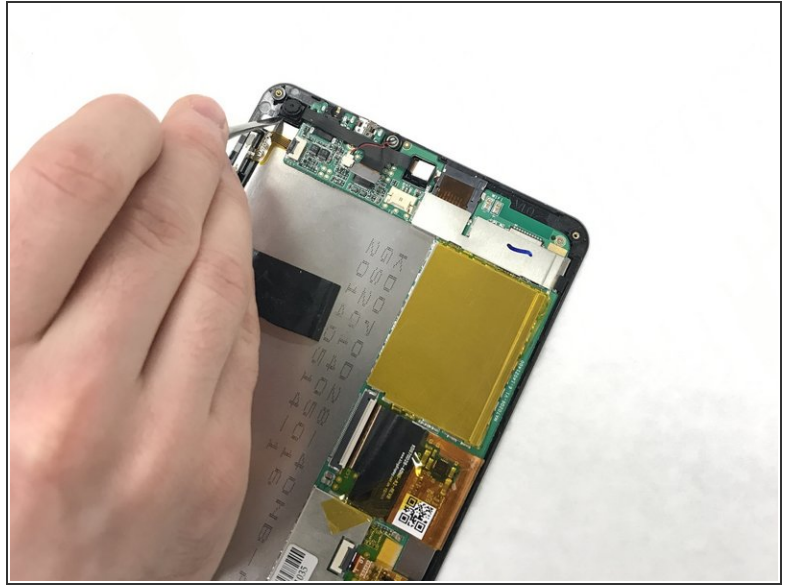
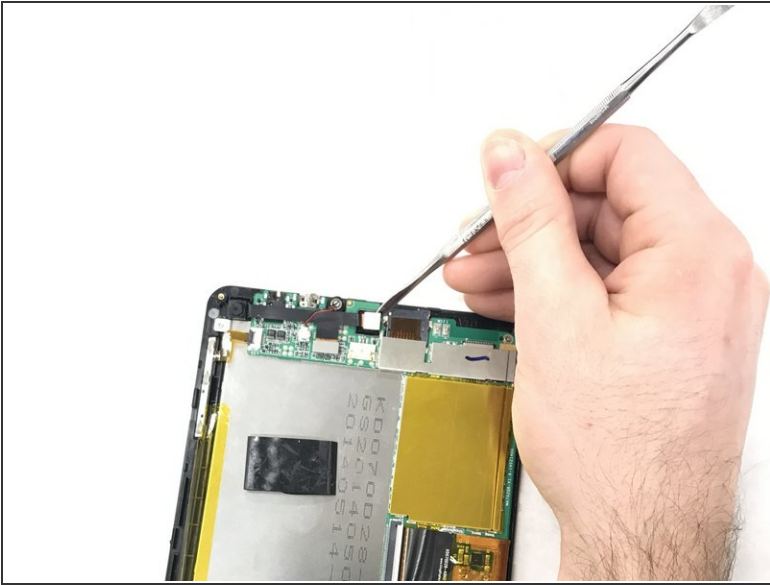
- Push out the battery connector using the spudger.
- Swing the battery connector clear of the connector socket.

Step 5



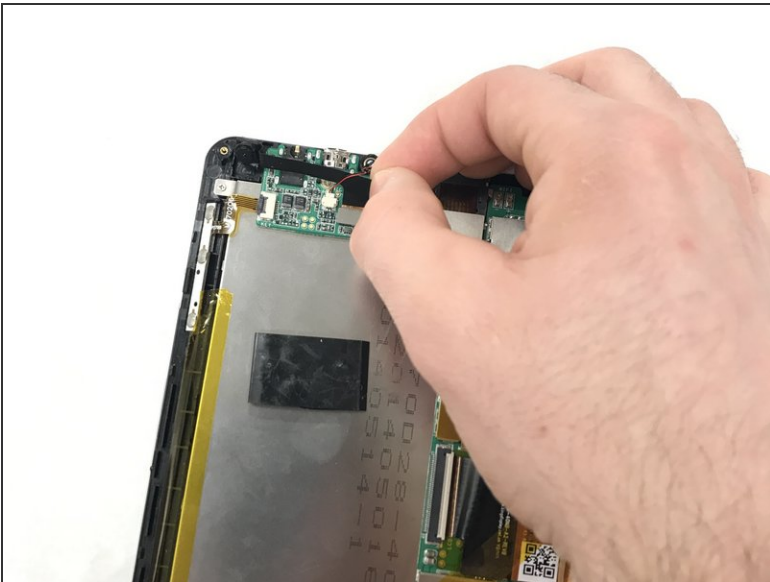
- Lift the battery from the device.

Step 6 — Motherboard



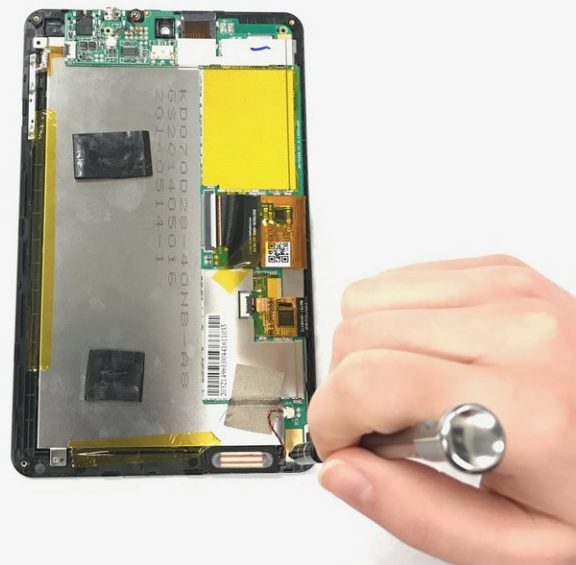
- Pry the connector that attaches the front and back camera with a metal spudger.

Step 7



- Pull the camera from the connectors.

Step 8



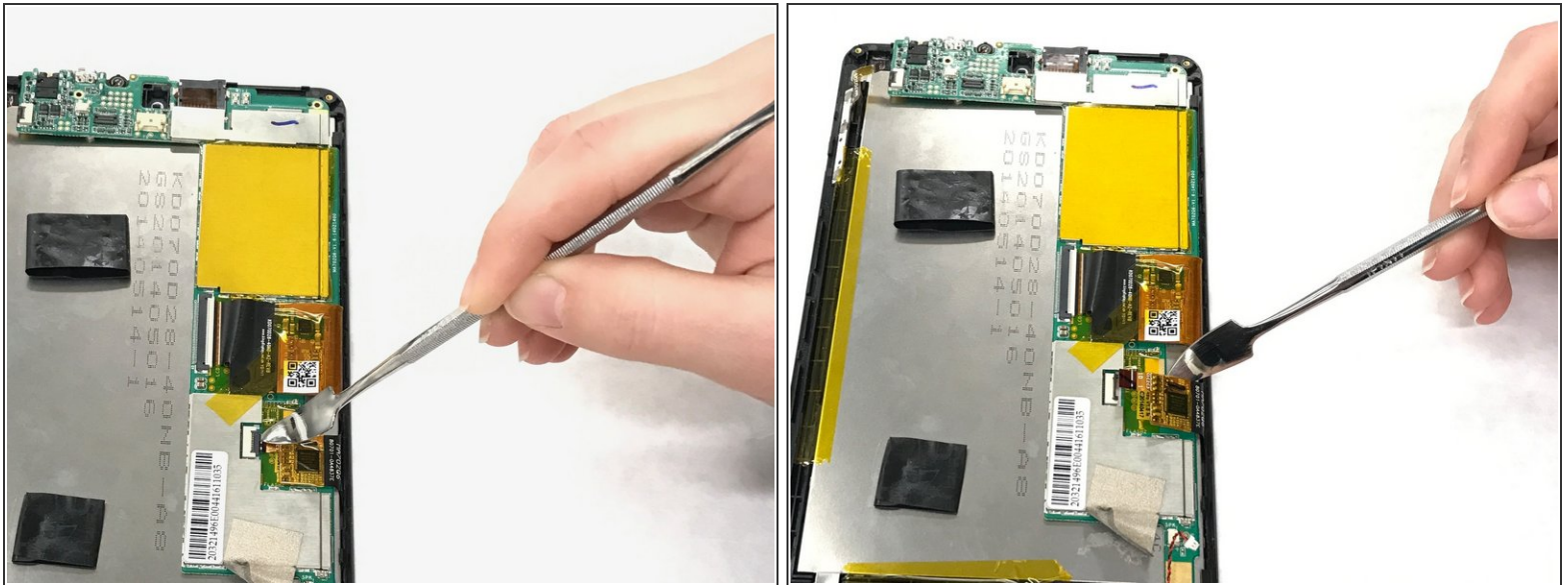
- Identify the three T5x1mm screws and remove them with a Phillips #000

Step 9



- Unplug the connector with the tweezers.
- Remove the tape.

Step 10



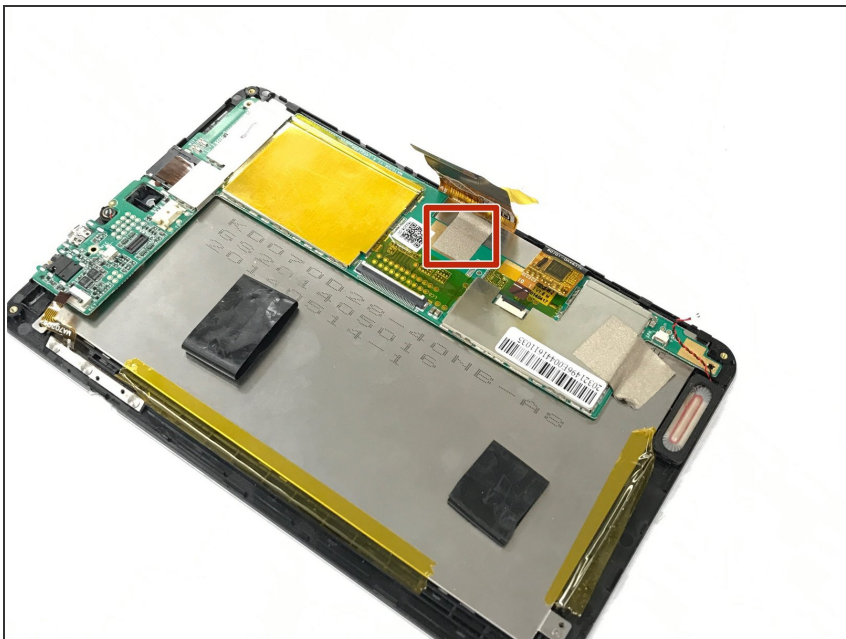
- Flip the ZIF connector with the metal spudger.
- Pull the ribbon connector out.

Step 11



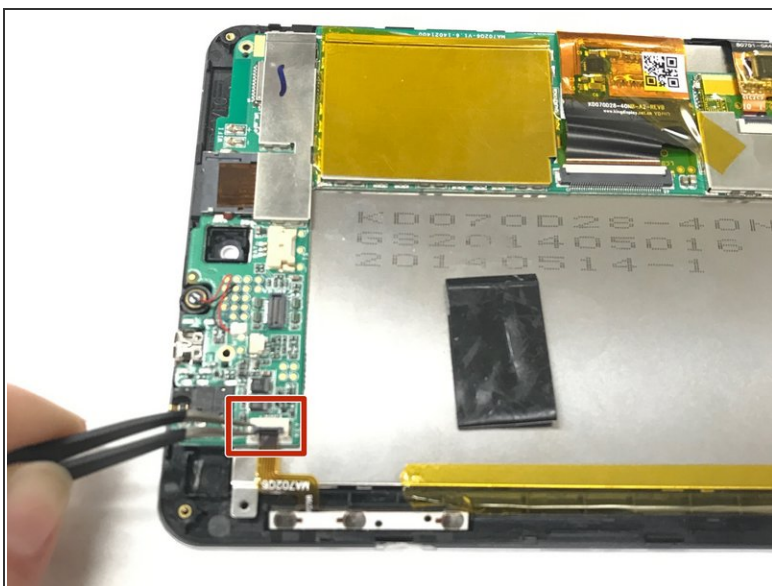
- Pull the orange tape with the tweezers.
- Flip the ZIF connector with the spudger.
- Pull the ribbon connector with the tweezers.

Step 12



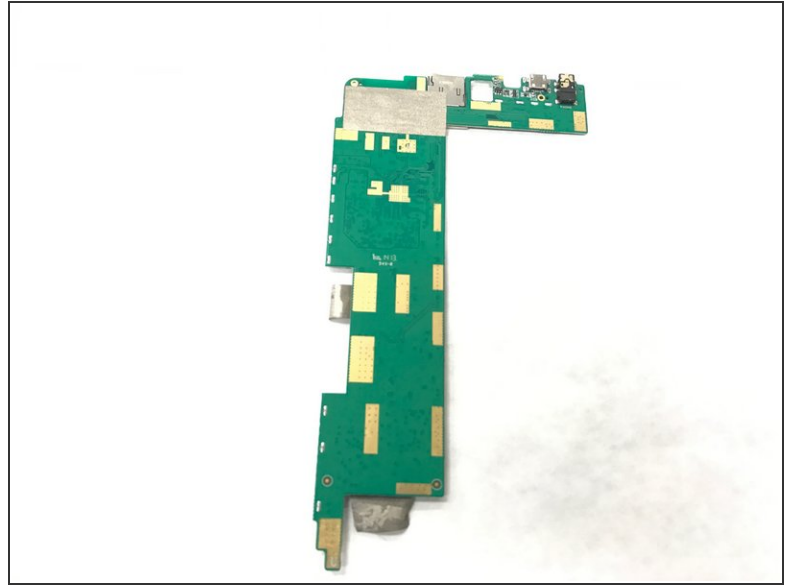
- Remove the gray tape below the ribbon connector.

Step 13



- Flip the ZIF connector.
- Pull the ribbon connector out with the tweezers.

Step 14



- Pull the circuit board off.

To reassemble your device, follow these instructions in reverse order.