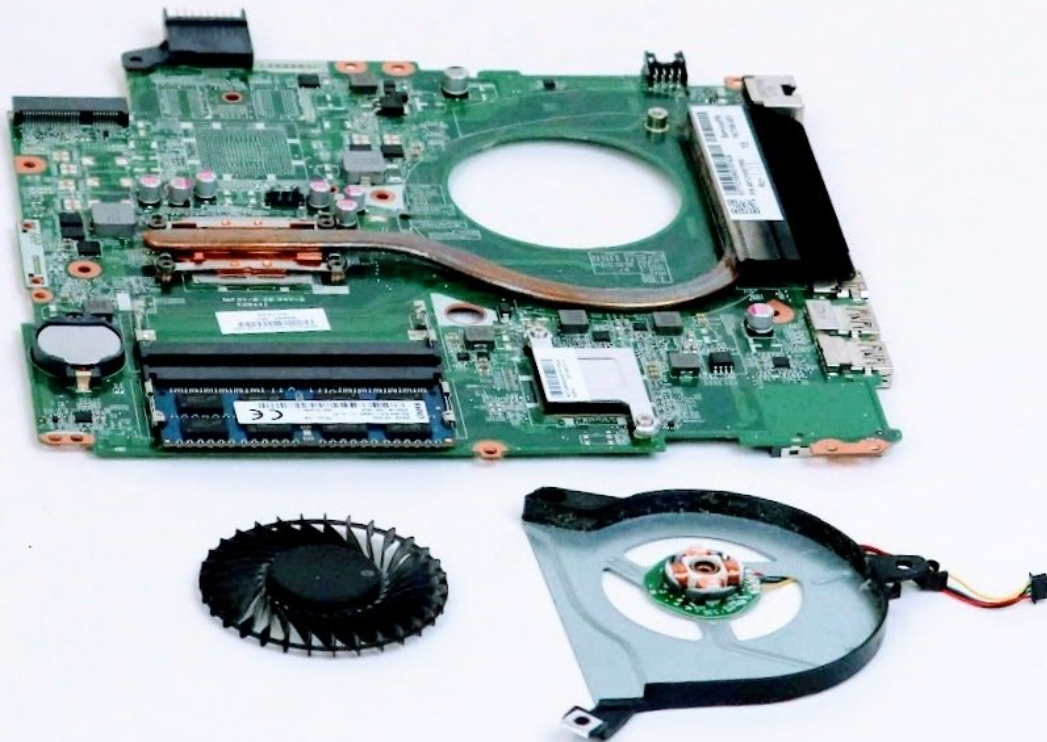




# HP Beats Special Edition 15-p390nr Fan Replacement

Replacing the fan on your HP Beats 15-p390nr

Written By: Evan Rice



---

## INTRODUCTION

If you find yourself needing to replace your HP Beats Special Edition 15-p390nr fans, use this guide to help you go through the process successfully.

---



### TOOLS:

- [Phillips #0 Screwdriver](#) (1)
  - [Phillips #00 Screwdriver](#) (1)
  - [Metal Spudger](#) (1)
-

## Step 1 — Keyboard



⚠ Turn computer off before starting.

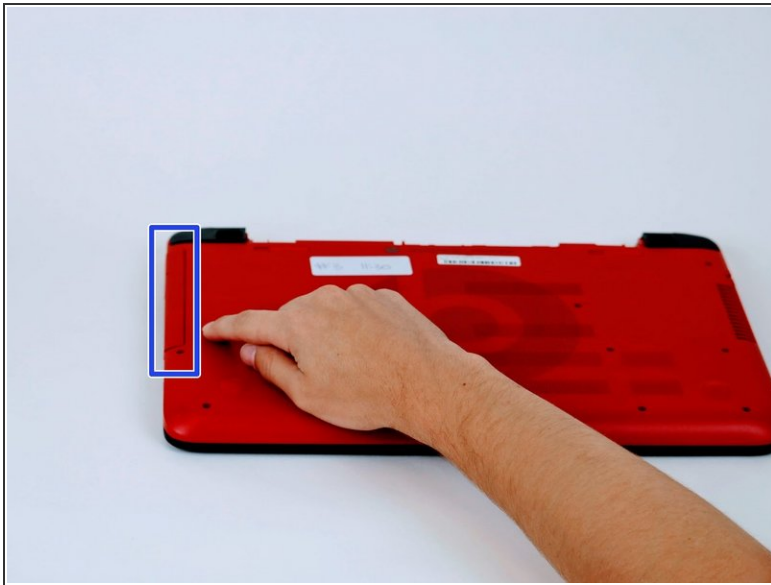
- Turn computer over and begin removing noticeable 8mm screws with a Phillips #0 screwdriver.

## Step 2



- i** Some screws may be hidden under a screw cover.
  - Simply use a metal spudger to pop off the screw cover to unveil the hidden 8mm screw.
- i** Screw cover may fly when removing.

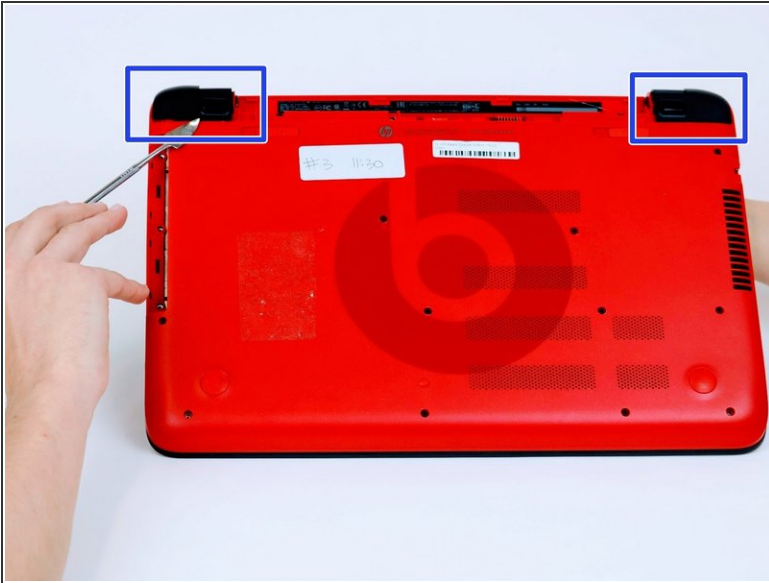
## Step 3




- Once screws are removed you may now remove the optical drive.
- Remove the hidden 3mm screw in the optical drive port.



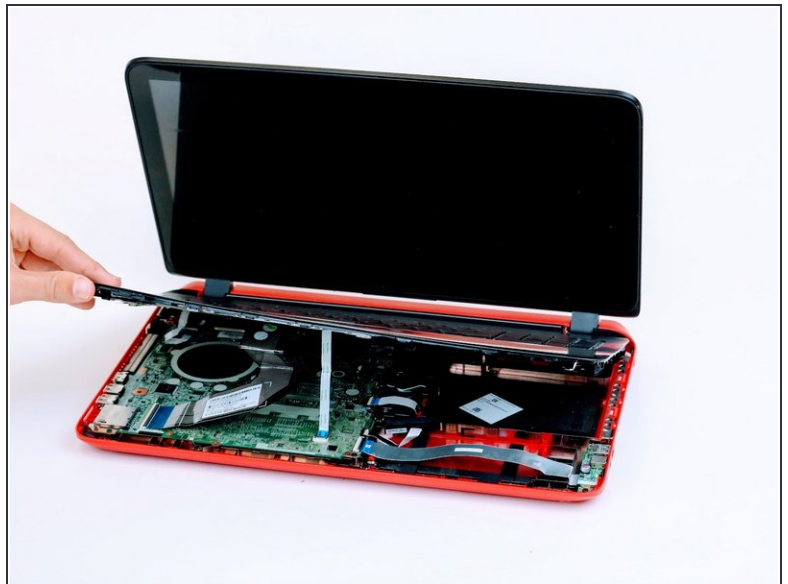
## Step 4



- Remove the rubberized feet located on the left and right shoulder of the computer to uncover hidden 8mm screws.

 Popping noises are normal

## Step 5



- Flip computer over and wedge metal spudger along the computer to pop off keyboard panel

## Step 6



- Unclip wires connected to the motherboard and remove keyboard from the device.

ⓘ 17 screws should be removed up to this point.

## Step 7 — Motherboard



- Remove screws from the motherboard.

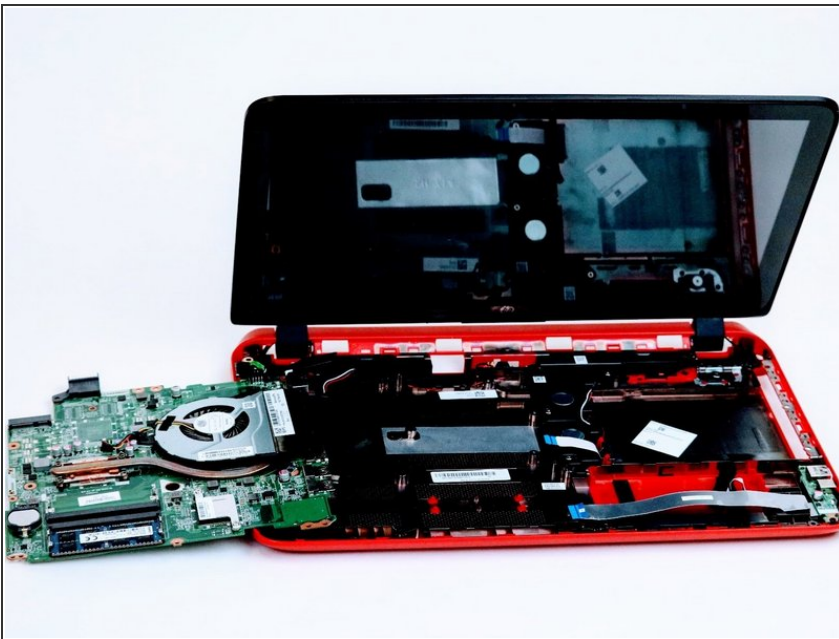
ⓘ 11 screws should be removed from the motherboard

## Step 8



- Unclamp wire strips from motherboard.

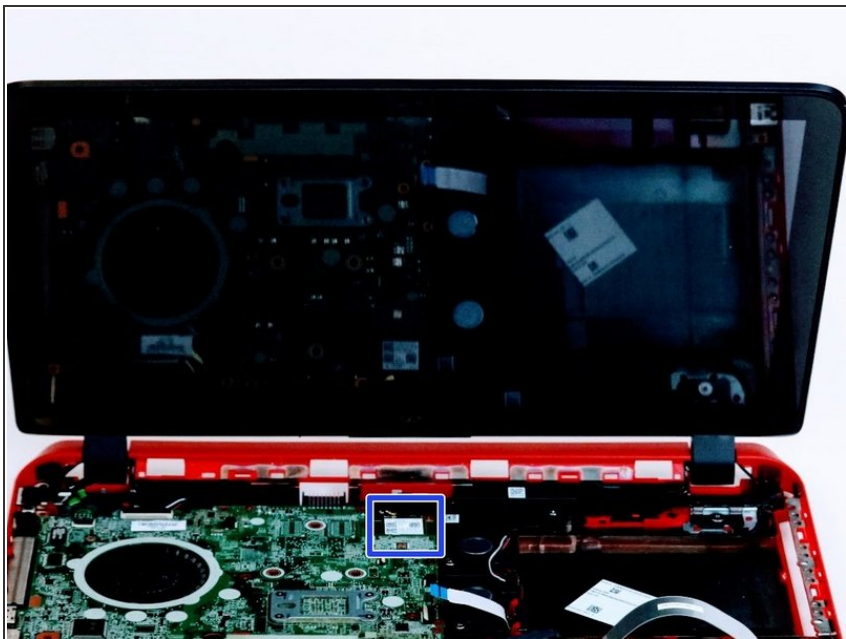
## Step 9



- Detach by lifting the motherboard up and flip the motherboard over.

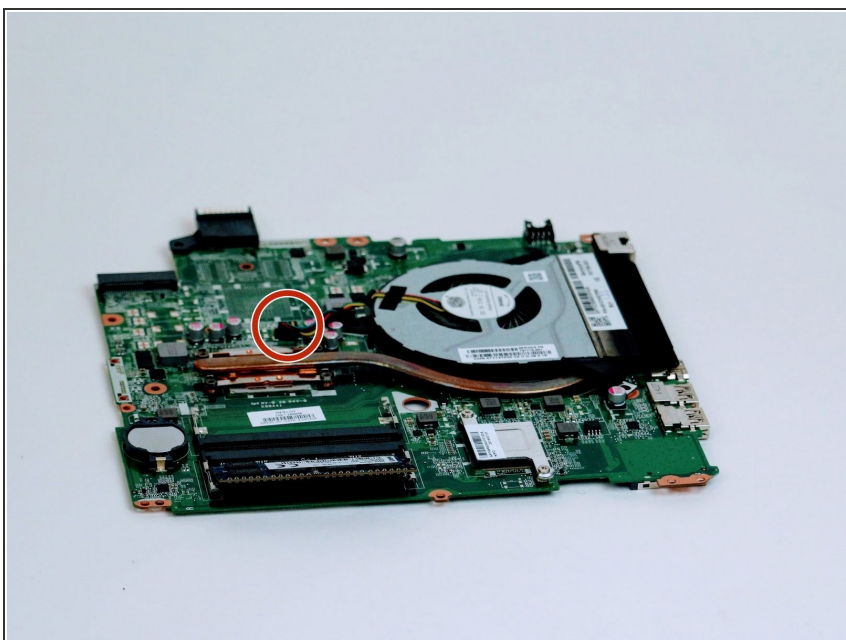


## Step 10



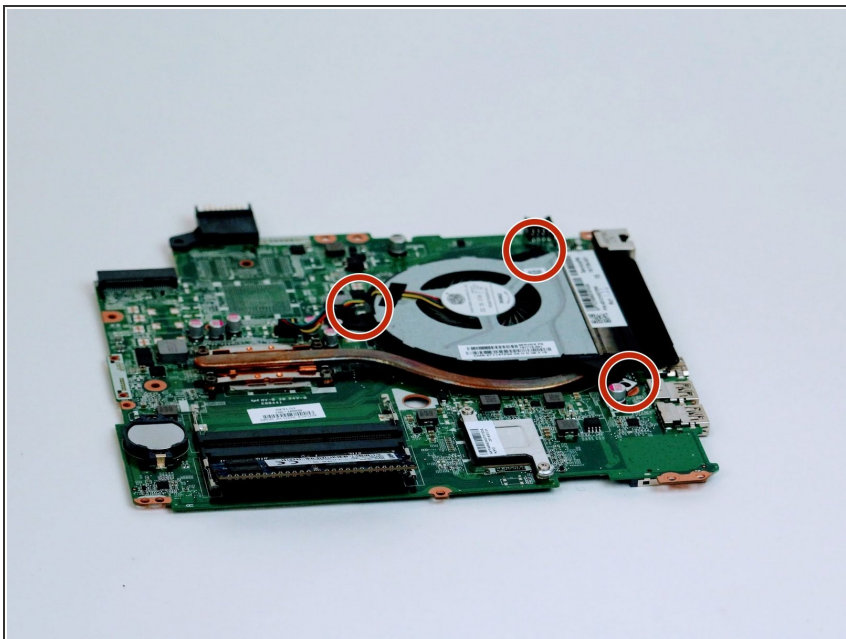
- Unclip wifi card for further procedures

## Step 11 — Fan



- Remove the fan cable from the connector that connects to the motherboard.
- ⚠ Pull straight out to avoid damage to connectors.

## Step 12



- Remove all three screws that hold the fan to the system board

## Step 13



- Lift and remove the fan from the top cover.

To reassemble your device, follow these instructions in reverse order.