



# HP Beats Special Edition 15-p390nr Keyboard Replacement

This guide will help disassemble the keyboard panel.

Written By: Deziree Mascarenas



---

## INTRODUCTION

Use this guide to help disassemble the keyboard panel for any parts needing to be replaced located under the keyboard panel.



### TOOLS:

- [Phillips #0 Screwdriver](#) (1)
  - [Phillips #00 Screwdriver](#) (1)
  - [Metal Spudger](#) (1)
-

## Step 1 — Keyboard



⚠ Turn computer off before starting.

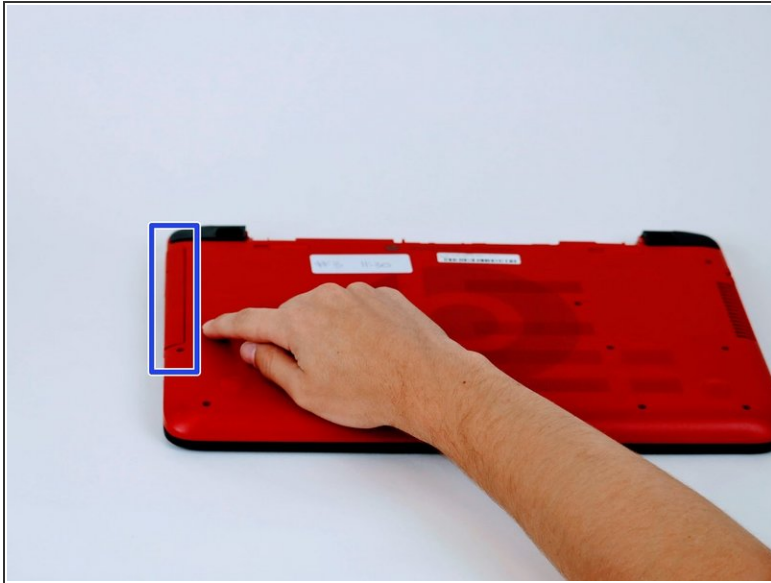
- Turn computer over and begin removing noticeable 8mm screws with a Phillips #0 screwdriver.

## Step 2



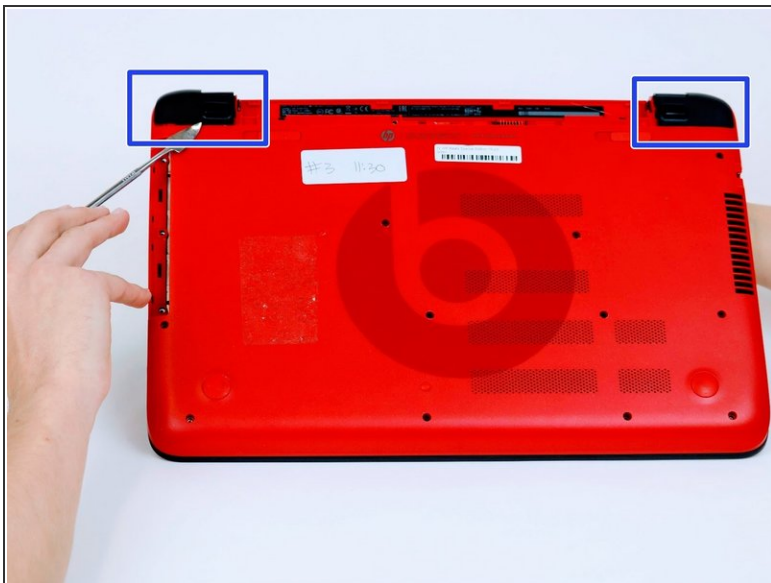
- Some screws may be hidden under a screw cover.
- Simply use a metal spudger to pop off the screw cover to unveil the hidden 8mm screw.
- Screw cover may fly when removing.

## Step 3




- Once screws are removed you may now remove the optical drive.
- Remove the hidden 3mm screw in the optical drive port.

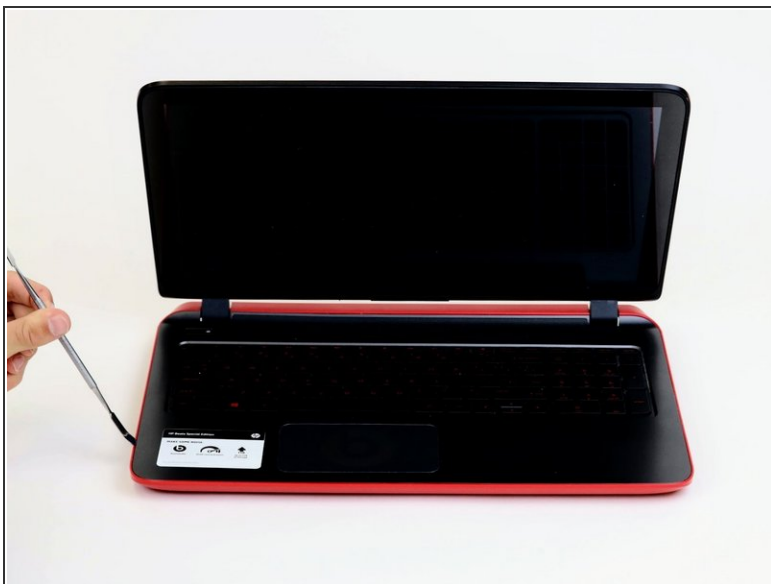
## Step 4



- Remove the rubberized feet located on the left and right shoulder of the computer to uncover hidden 8mm screws.

 Popping noises are normal

## Step 5



- Flip computer over and wedge metal spudger along the computer to pop off keyboard panel



## Step 6



- Unclip wires connected to the motherboard and remove keyboard from the device.

**i** 17 screws should be removed up to this point.

To reassemble your device, follow these instructions in reverse order.