



HP Chromebook 11 G3 Charging Port Replacement

How to replace the HP Chromebook 11 G3's charging port.

Written By: Rahul Goyal



INTRODUCTION

This guide walks through replacing a faulty charging port. It requires removing the keyboard mount. Afterwards, it is relatively simple and requires only a plastic opening tool to finish removal.

TOOLS:

- [iFixit Opening Tools](#) (1)
 - [Tweezers](#) (1)
 - [Phillips #00 Screwdriver](#) (1)
 - [Spudger](#) (1)
-

Step 1 — Keyboard Mount



- Flip the laptop upside down so that the lid lies flat on the table.
- Remove the nine 6mm Phillips #00 screws that line the border.

Step 2



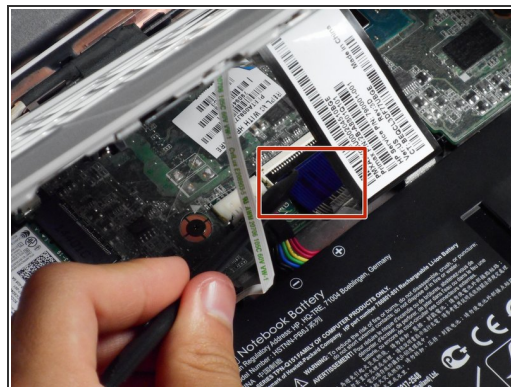
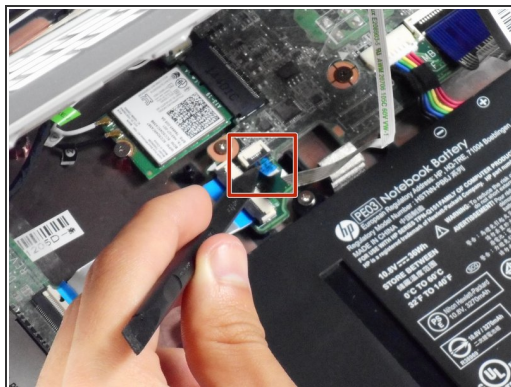
- Remove the two rubber feet closest to the hinge using tweezers.
- Remove the two 6mm Phillips #00 screws revealed under these rubber feet.
- ⓘ The rubber feet may tear while removal; preventing this can be difficult, but it won't harm the laptop. If desired, replace these rubber feet during reassembly.

Step 3



- Flip the laptop so it is in the upright position.
- Open the lid.
- Unsnap the keyboard mount along the border of the laptop using a plastic opening tool.
- ⓘ This may require more force than expected. Hearing loud clicks as the plastic opening tool slides along the seam is normal.

Step 4



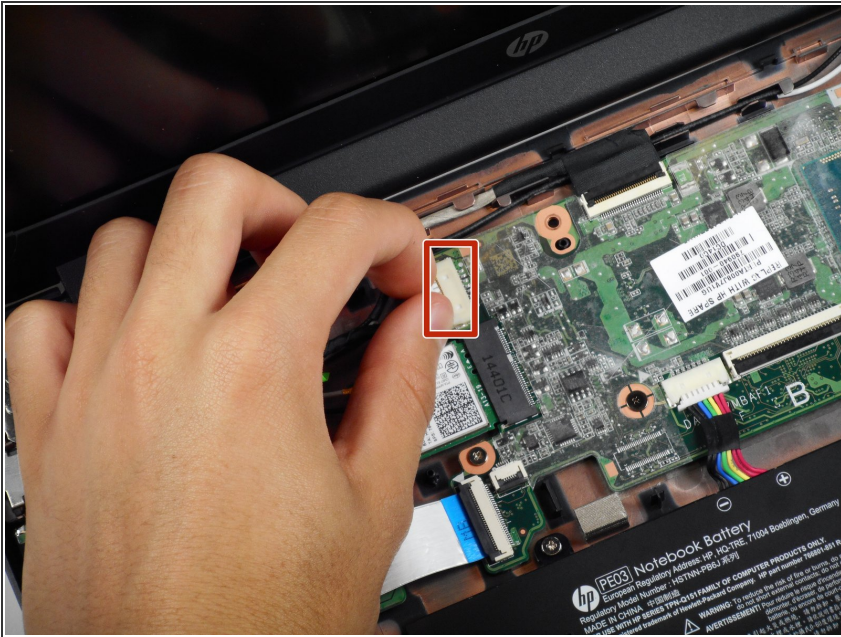
- Tilt the keyboard mount up.
- Use a spudger to flip up the two ZIF connector retaining flaps for the ribbon cables that connect the keyboard mount to the motherboard.
- Gently remove both ribbon cables.

Step 5



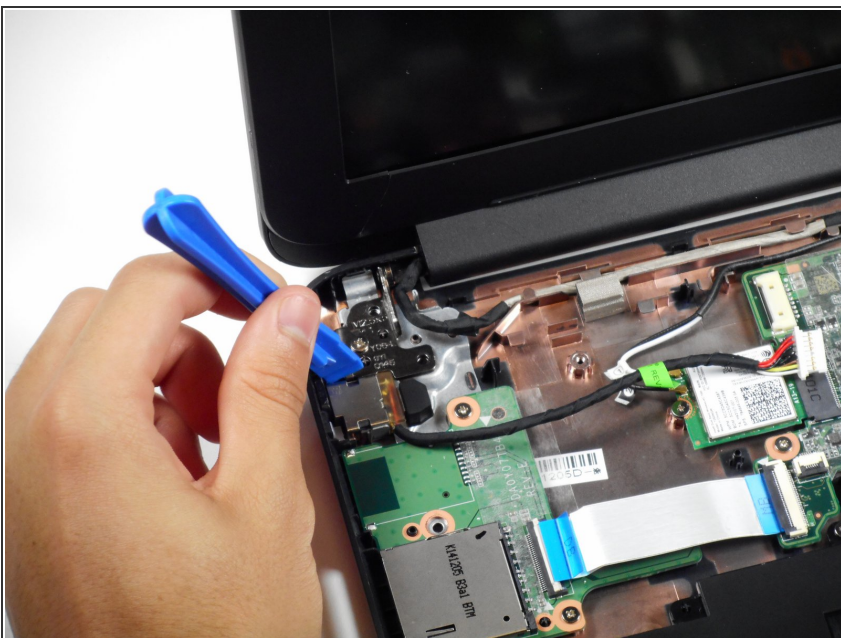
- Lift the keyboard mount out of the laptop.

Step 6 — Charging Port



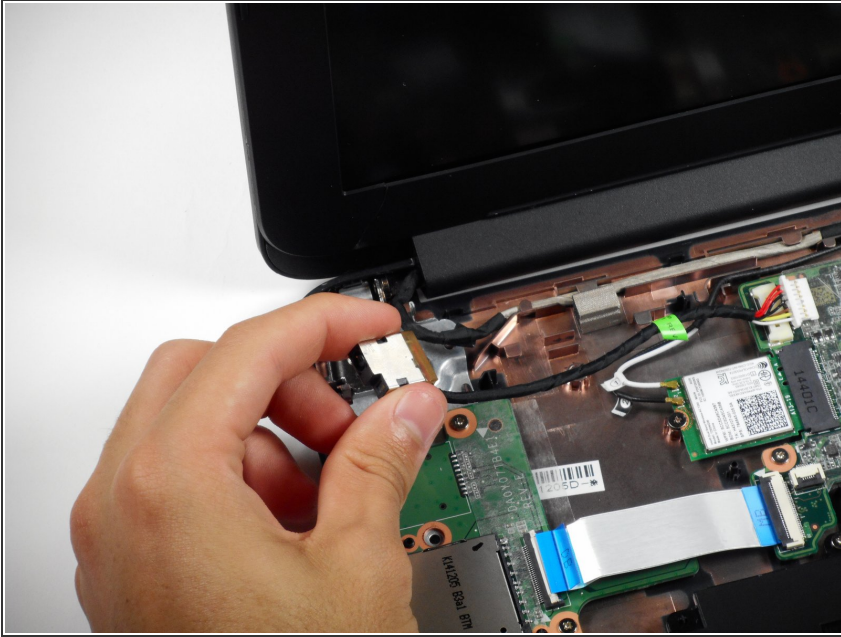
- Gently remove the charging port's slide-out connector from the motherboard.

Step 7



- Locate the two brown clips that secure the charging port to the motherboard from both edges.
- Remove the charging port by sliding the plastic opening tool between the charging port and one of the clips, and then prying.

Step 8



- Lift the charging port out of the base.

To reassemble your device, follow these instructions in reverse order.