



HP Chromebook 11 G4 LCD Replacement

This guide will show you how to replace the LCD/display on your HP Chromebook 11 G4.

Written By: Jonah Silva



INTRODUCTION

Cracked or glitching screens are common for all laptops. This guide will show you how to remove and replace a defective LCD.



TOOLS:

- [Spudger](#) (1)
- [Metal Spudger Set](#) (1)
- [Phillips #0 Screwdriver](#) (1)
- [Phillips #00 Screwdriver](#) (1)



PARTS:

- [HP Chromebook 11 G4 LCD](#) (1)
- [HP Chromebook 11 G3/G4 LCD Cable](#) (1)
- [HP Chromebook 11 G3/G4 Bezel](#) (1)

Step 1 — LCD



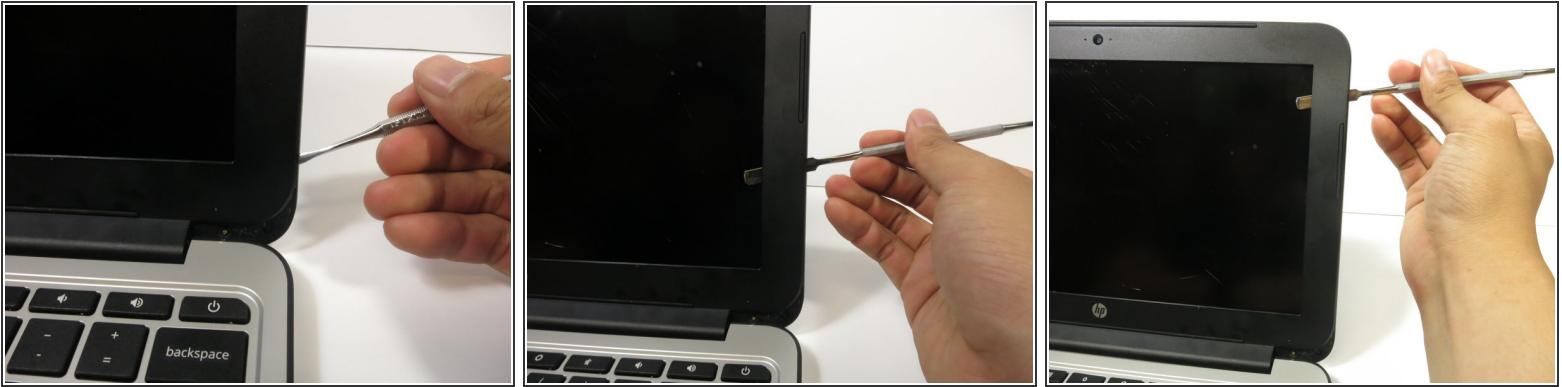
- Open the laptop.
- With your the plastic spudger or your fingers, gently peel off the two thin adhesive layers at left and right bottom edges of the screen.
- ⓘ Do not pry up the plastic bezel (monitor frame), just the adhesive layer.
- ⓘ If the adhesive layer isn't coming off, use a metal spudger.

Step 2



- Remove the two 3 mm Phillips #0 screws located underneath the adhesive layers that were removed in the previous step

Step 3



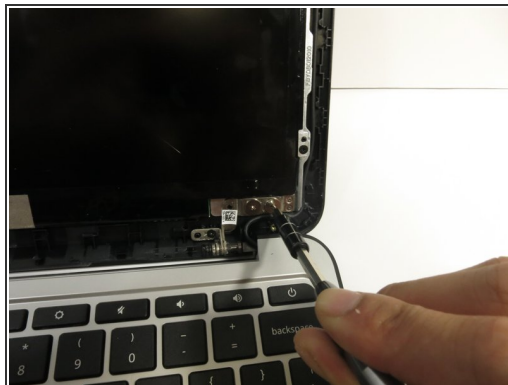
- Gently pry up the plastic bezel with the small, narrow end of the metal spudger.
 - Insert the long, flat end of the metal spudger into the gap.
 - Slide the metal spudger along the edge to disconnect the bezel from the laptop
- i** You should hear popping sounds as you slide the spudger along the edge.
- i** If the spudger gets stuck while sliding, use some extra force.

Step 4



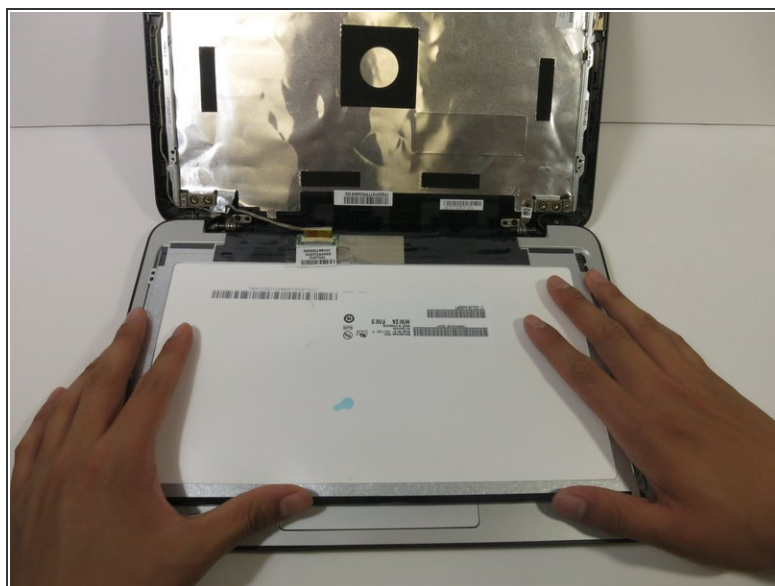
- Tilt the laptop screen as far back as possible
 - Hold the bezel with both hands and twist up and towards you to disconnect the bottom edge of the bezel from the laptop.
- i** You may have to use extra force for this step

Step 5



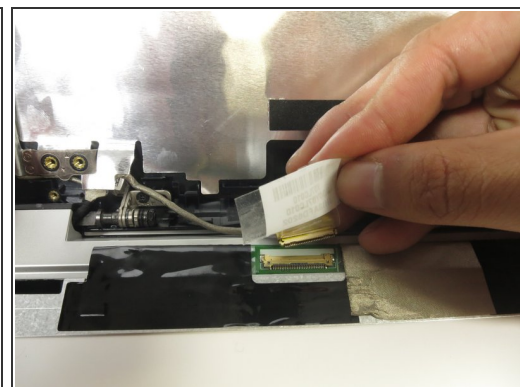
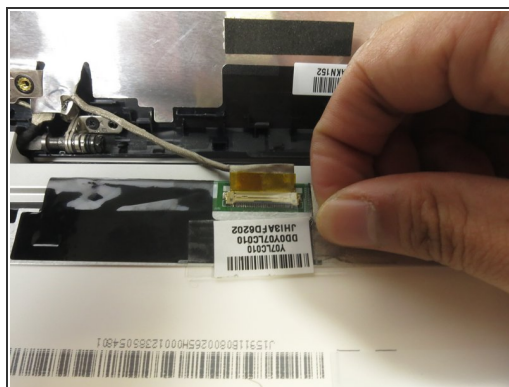
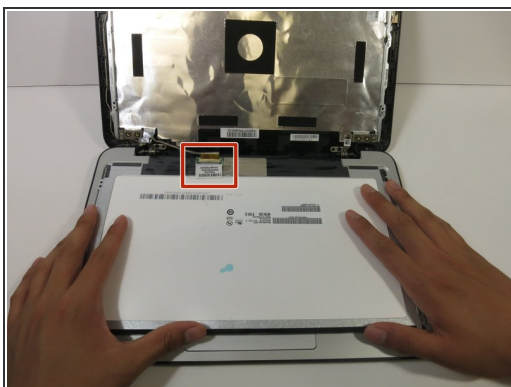
- Remove the four silver 4 mm Phillips #0 screws at the bottom of the LCD.
- Remove the four black 3 mm Phillips #00 screws along the perimeter of the LCD.

Step 6



- Lift the LCD off its mount and gently lay it facedown on the keyboard.

Step 7



- Peel off the clear sticker covering the display cable at the base of the LCD.
- Gently pull the display cable from the connector.

To reassemble your device, follow these instructions in reverse order.