



HP Chromebook 11 G4 Motherboard Replacement

This guide will show you how to replace the motherboard on the HP Chromebook 11 G4

Written By: Jair Herrera



INTRODUCTION

The motherboard is the electronic circuit board of which all other components are connected to. A broken motherboard is a broken computer.



TOOLS:

- [Phillips #1 Screwdriver](#) (1)
- [Spudger](#) (1)



PARTS:

- [HP Chromebook 11 G3/G4 Motherboard](#) (1)
- [HP Chromebook 11 G3/G4 Bottom Cover](#) (1)
- [HP Chromebook 11 G3/G4 LCD Cable](#) (1)
- [HP Chromebook 11 G3/G4 Speaker Set](#) (1)
- [HP Chromebook 11 G3/G4 Wi-Fi Card](#) (1)

Step 1 — Keyboard




- Position the closed Chromebook with the rubber pads are facing up.

Step 2



- Slide the flat end of the spudger under the rubber pads at the upper right-hand and the upper left-hand corners.
- Pry off the rubber pads to reveal a screw under each pad.

 The rubber pads are attached with a strong adhesive. The force applied may damage the pads.

This document was generated on 2019-09-20 01:46:10 AM (MST).

Step 3



- Remove the eleven 6mm Phillips #1 screws.

Step 4



- Flip over the Chromebook and open it.

Step 5



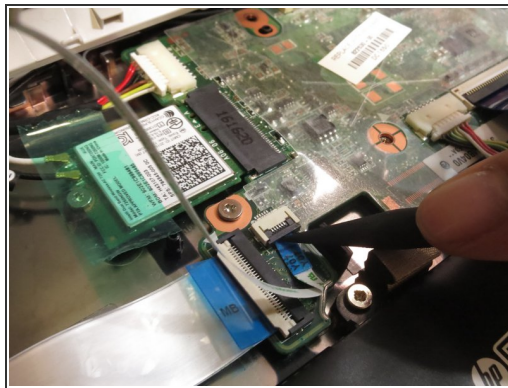
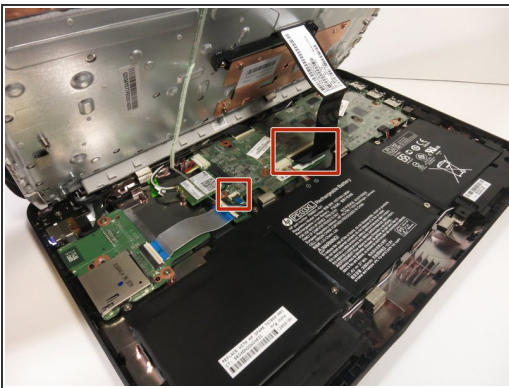
- Insert the flat end of the spudger between the bottom body of the Chromebook and keyboard body.
- Slide the spudger along the gap, applying downward pressure to separate the two components.
- ⓘ You should hear popping sounds as you slide the spudger along the edge.
- ⓘ If the spudger gets stuck while sliding, simply slide the spudger back for a bit, and continue sliding forward.

Step 6



- Lift the bottom of the keyboard assembly to reveal the internal components of the device.

Step 7



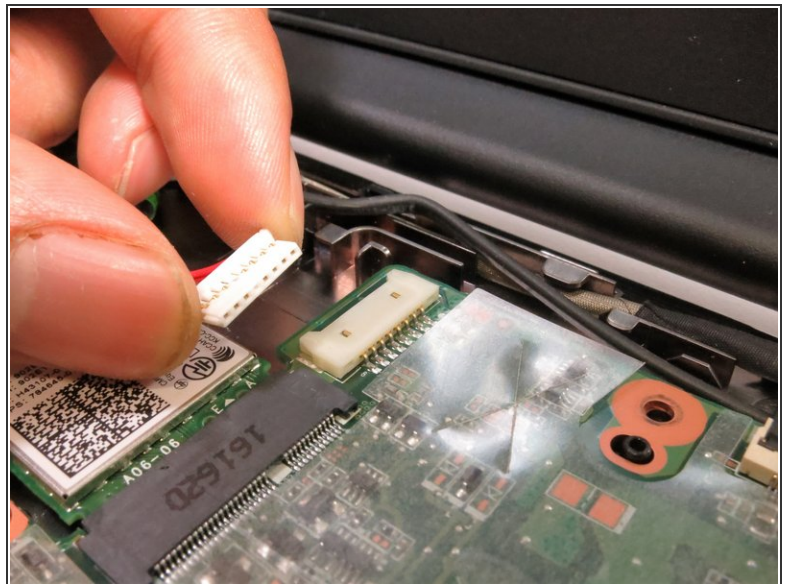
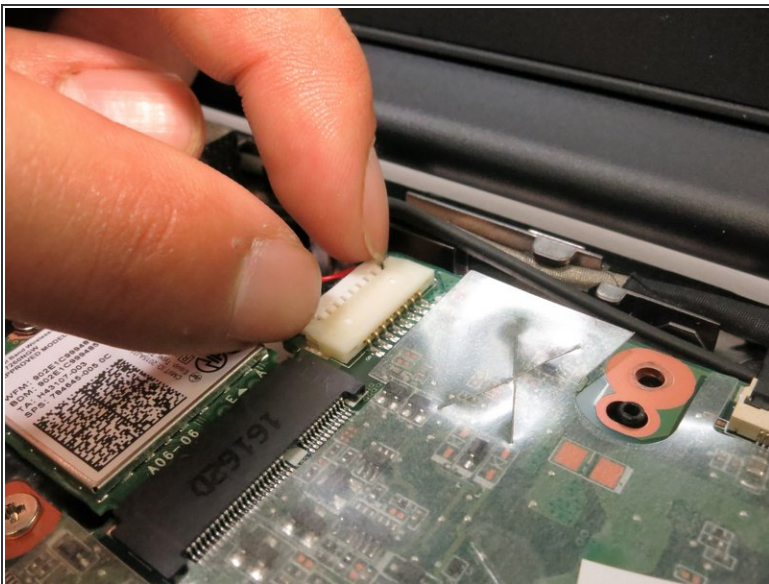
- Use the pointed end of the spudger to flip up the black tabs on the two ZIF connectors located on the motherboard.
- Disconnect the ribbon cables from the motherboard by gently sliding them out of their sockets.

Step 8



- Remove the keyboard assembly by lifting it off the laptop base.

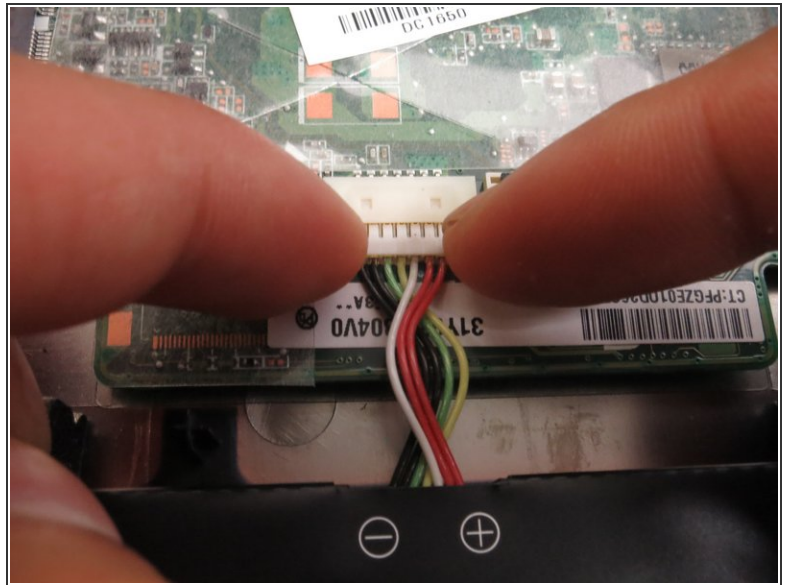
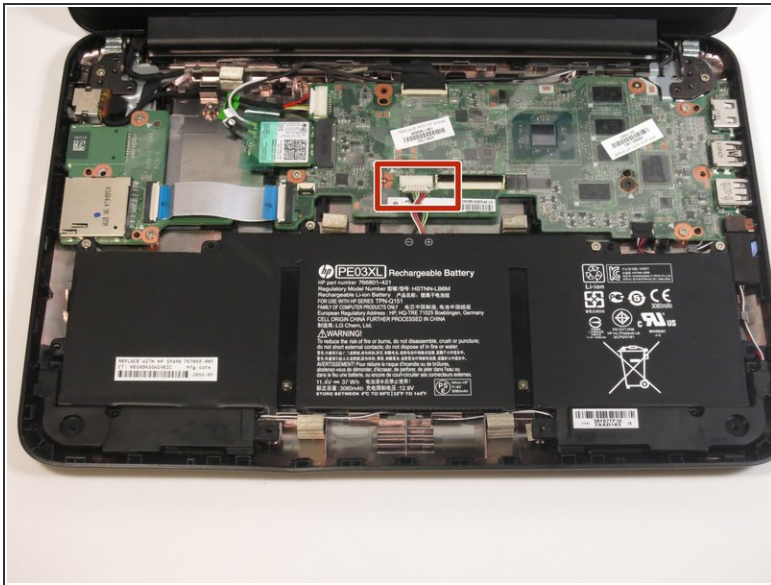
Step 9 — Motherboard



- Remove the cable at the top left of the motherboard by grabbing the male connector and applying force in the direction of the wires away from the motherboard.

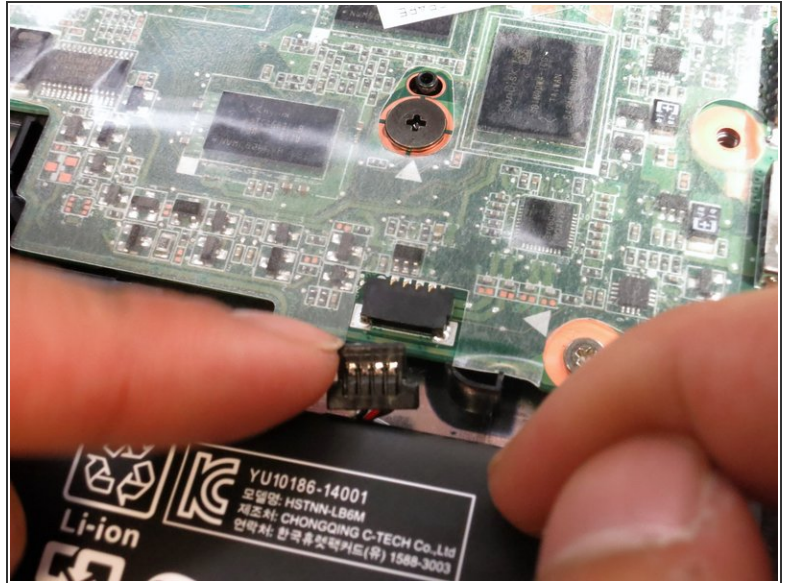
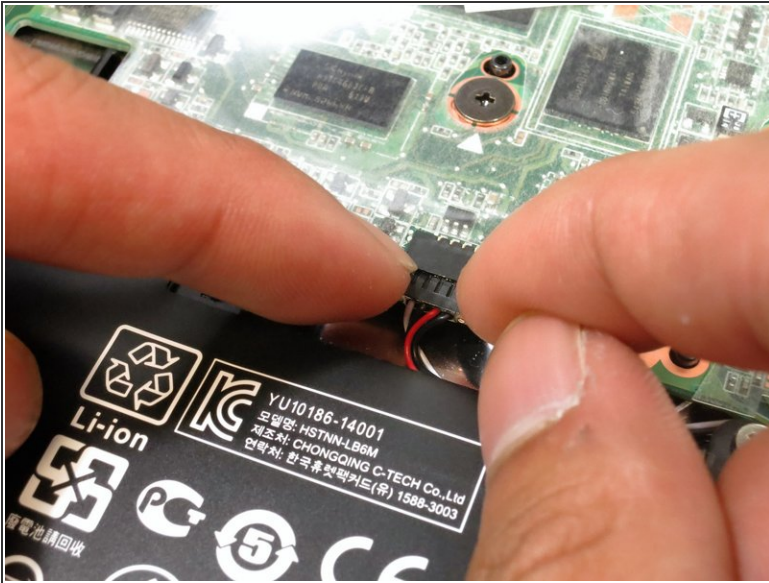
 Do not pull on the wires to apply more force. Instead, gently wiggle the connector until it slides out.

Step 10



- Disconnect the battery wires from the motherboard by applying pressure on the male connector away from the motherboard.
- ⓘ Do not pull on the wires to apply more force. Instead, gently wiggle the connector until it slides out.

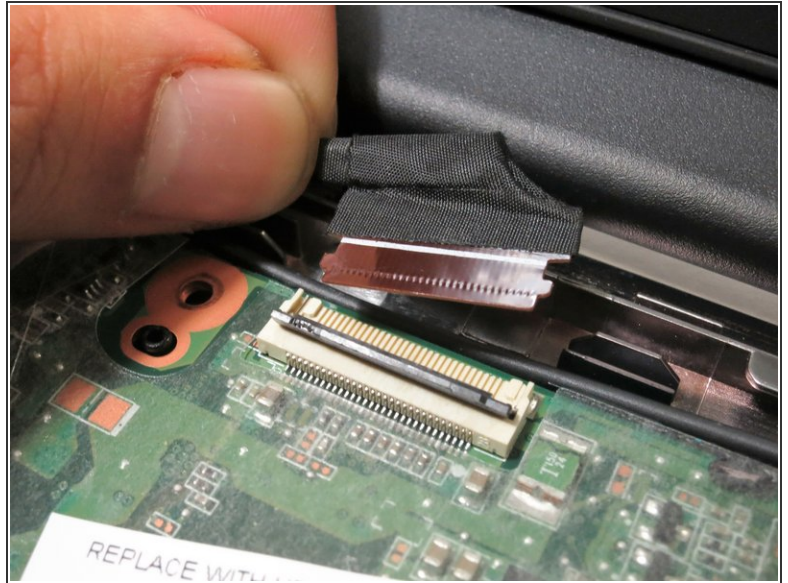
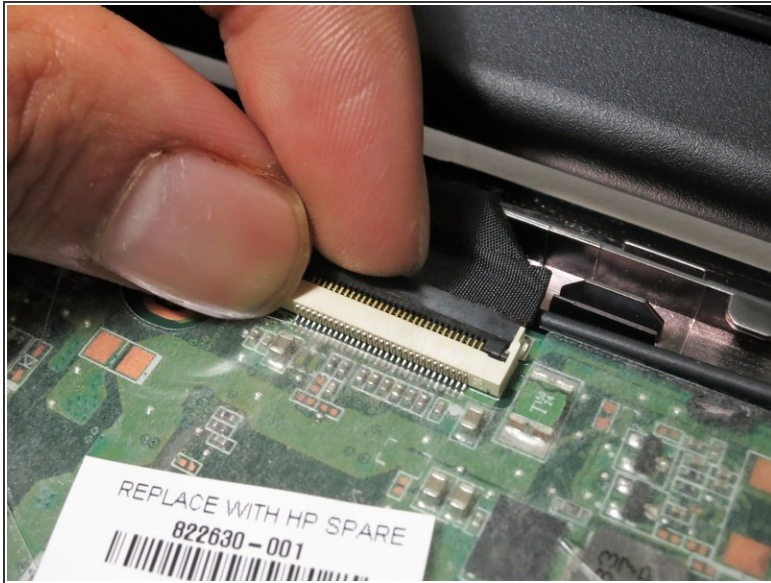
Step 11



- Disconnect the wire bundle on the bottom right of the motherboard by pulling the black male connector away from its socket on the motherboard.

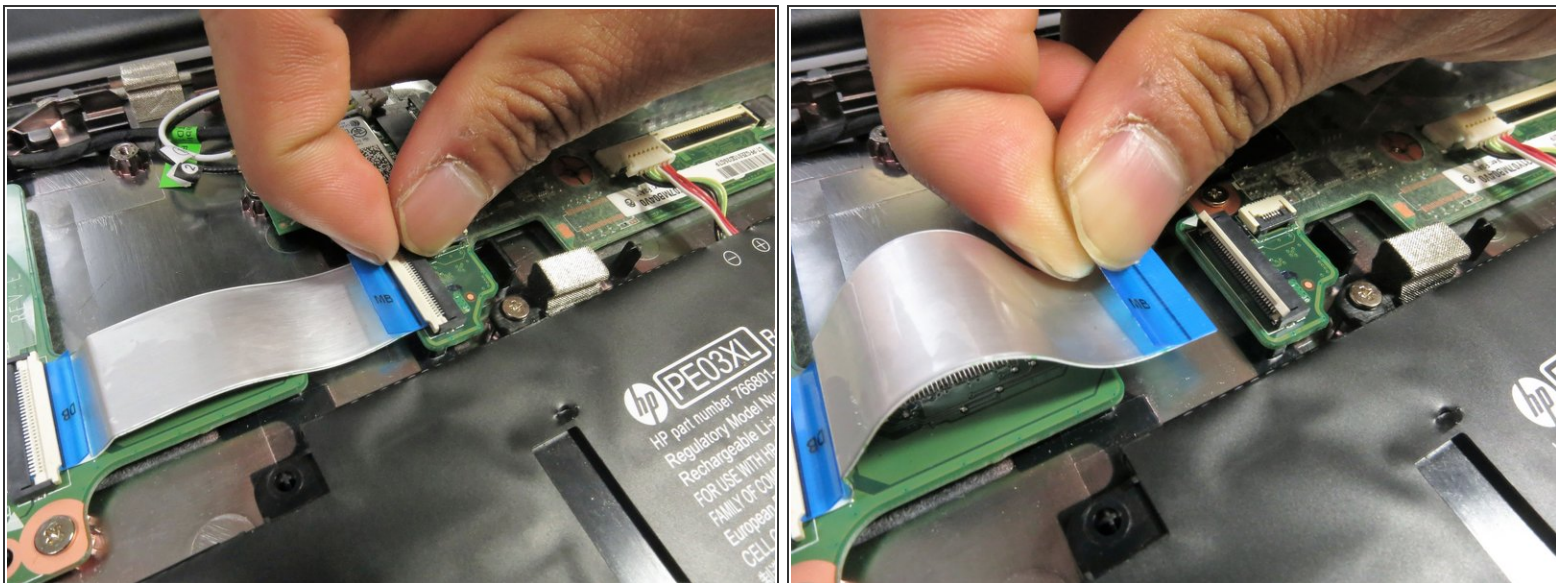
⚠ Do not pull on the wires to apply more force. Instead, gently wiggle the connector until it slides out.

Step 12



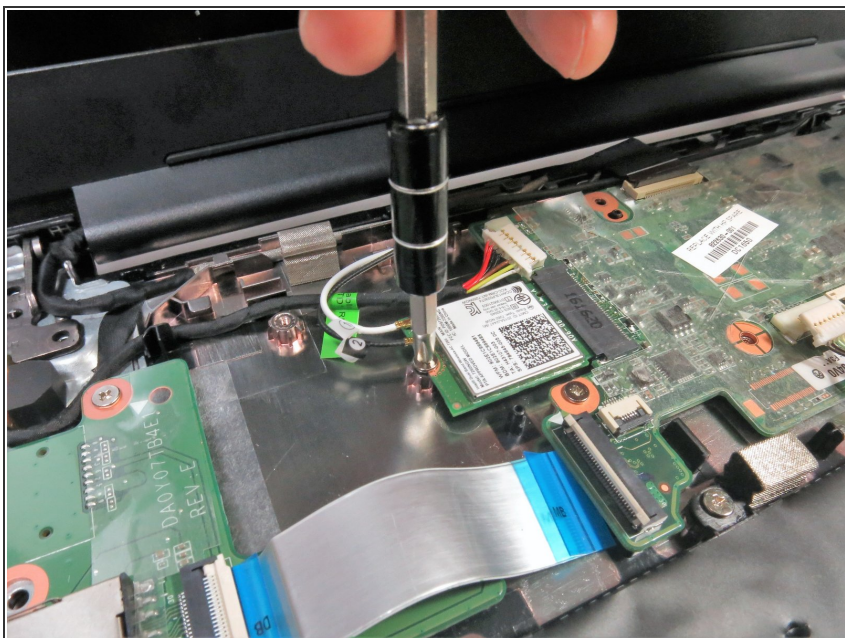
- Use a fingernail or a spudger to flip up the black tab on the zero insertion force connector located at the top of the motherboard.
- Remove the cable by pulling away from the motherboard.

Step 13



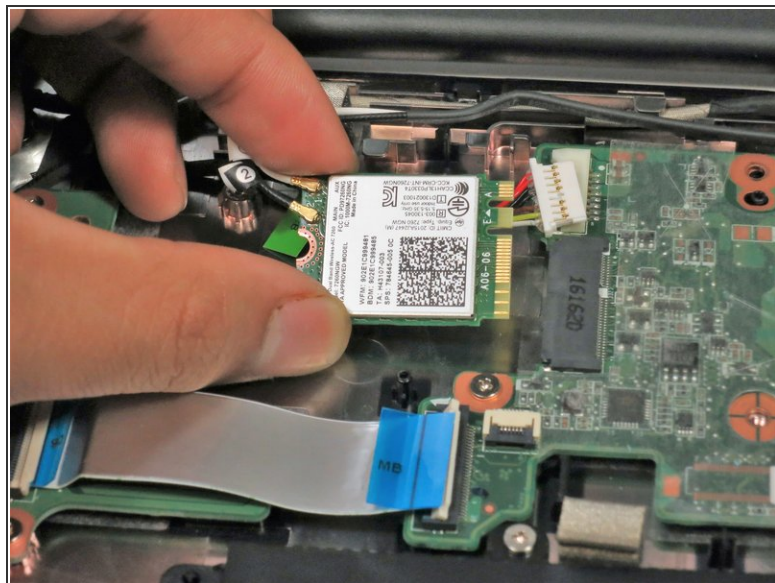
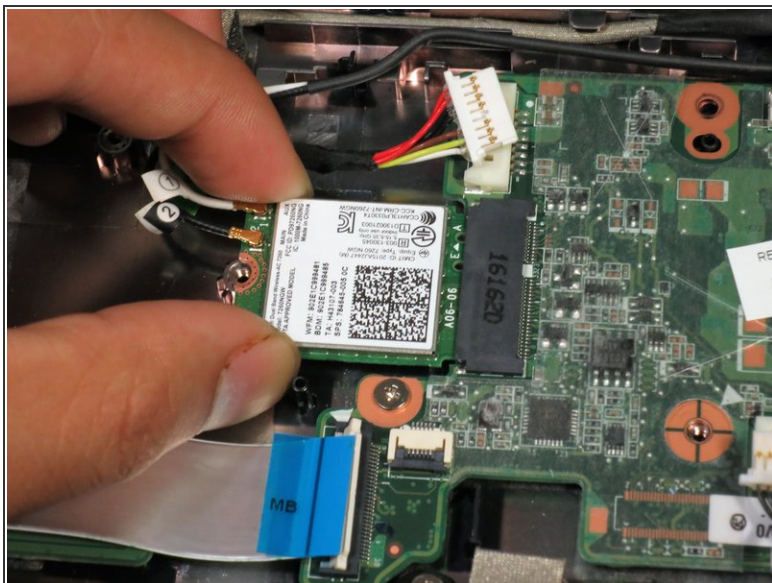
- Use a fingernail or a spudger to flip up the white tab on the zero insertion force connector on the bottom left of the motherboard.
- Remove the cable by pulling away from the motherboard.

Step 14



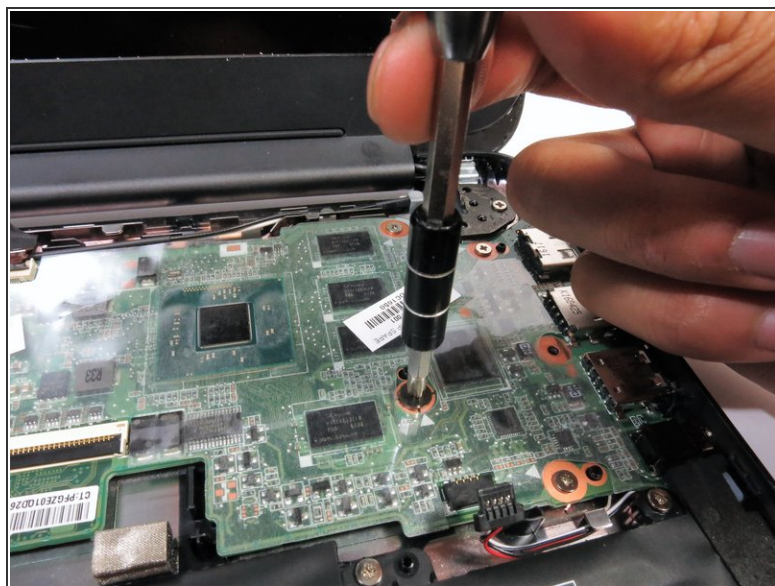
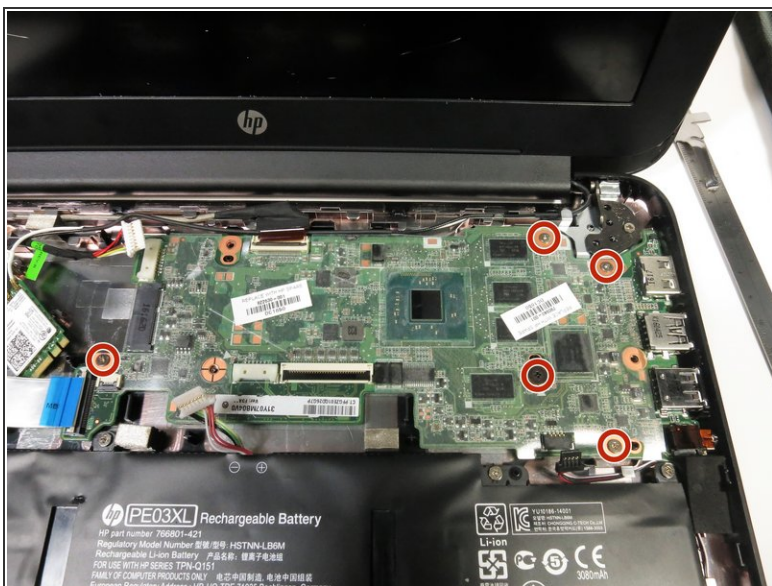
- Remove the 4 mm Phillips #1 screw on the Wi-Fi card.

Step 15



- Slide the Wi-Fi card away from the motherboard.

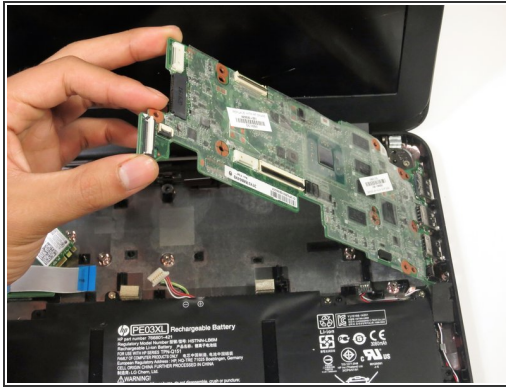
Step 16



- Remove the five 4 mm Phillips #1 screws from the motherboard.

❗ One of these screws is black, the rest are silver.

Step 17



- Lift the left edge up and away from the base of the laptop.
- Remove the motherboard.

To reassemble your device, follow these instructions in reverse order.