



HP Chromebook 11 G5 EE DC IN Port Replacement

How to replace the charging port (DC input cable) on an HP Chromebook 11 G5 Education Edition.

Written By: Chris Storer





TOOLS:

- [Phillips #0 Screwdriver](#) (1)
- [Spudger](#) (1)
- [Packing Tape](#) (1)



PARTS:

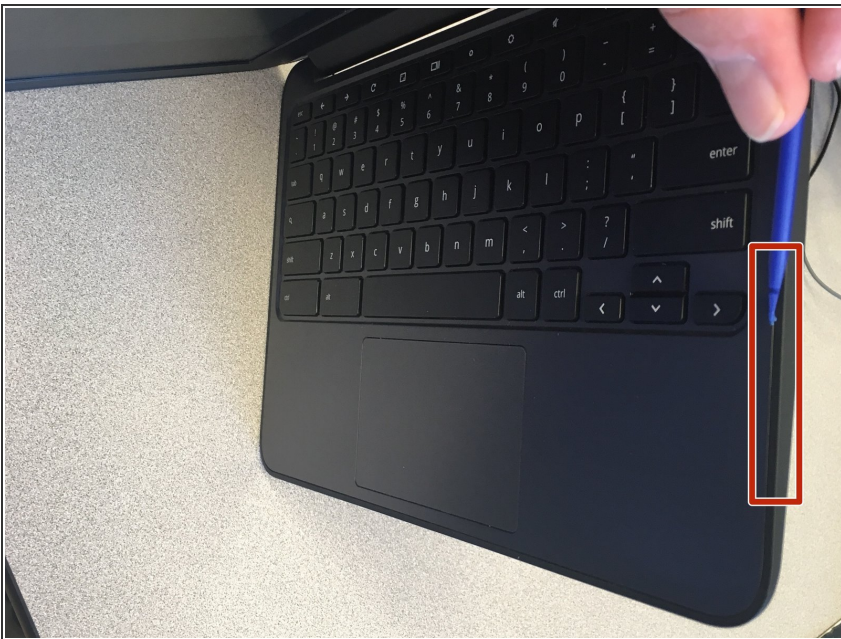
- [918169-YD1](#) (1)

Step 1 — Removing Palmrest Screws



- Remove the black rubber screw covers using the point of your spudger. Then, remove the 10 #0 Phillips screws from the palmrest.
- ⓘ There are no screws under the 4 large rubber feet. Do not remove them.

Step 2 — Disengaging Palmrest Clips



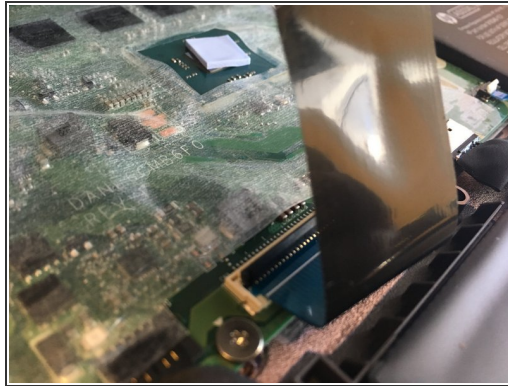
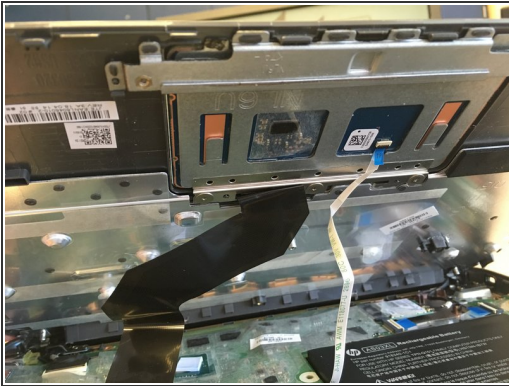
- Open the Chromebook at a 90 degree angle, and set it on it's side.
- ⓘ Some Chromebooks turn on automatically when opened. If the device turns on, make sure you power it off before proceeding.
- Insert the spudger into the gap in between the glossy keyboard bezel and the rubbery side part. Gently pry to release the clips. Move the spudger around the perimeter of the device, releasing clips as you go.



Make sure you do not allow the palmrest to come detached once all clips are removed, there are

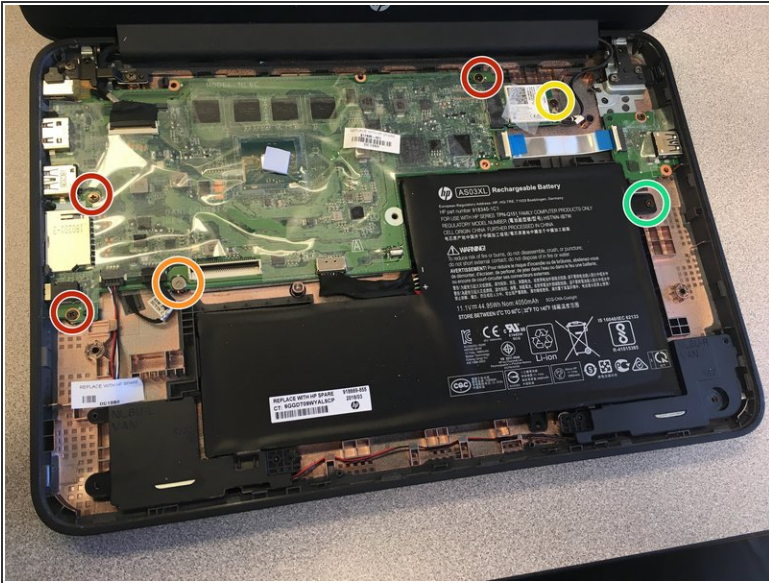
fragile ribbon cables attached to it.

Step 3 — Disconnect Touchpad Ribbons



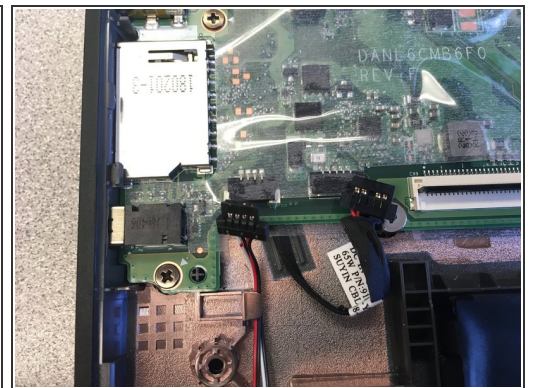
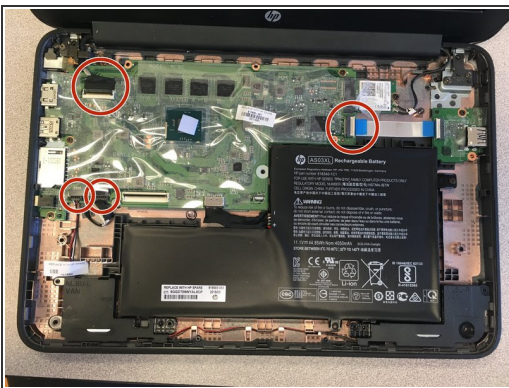
- Lift up the locking tabs on the system board for both ribbons
- As you lift the palmrest up, the ribbon for the touchpad (white in my case) will be sticking to the bottom of the palmrest with adhesive. Carefully pull the ribbon off so that you can reach in there.
- Disconnect both ribbons from the system board.
- Lift up the palmrest and set it off to the side.

Step 4 — Remove screws



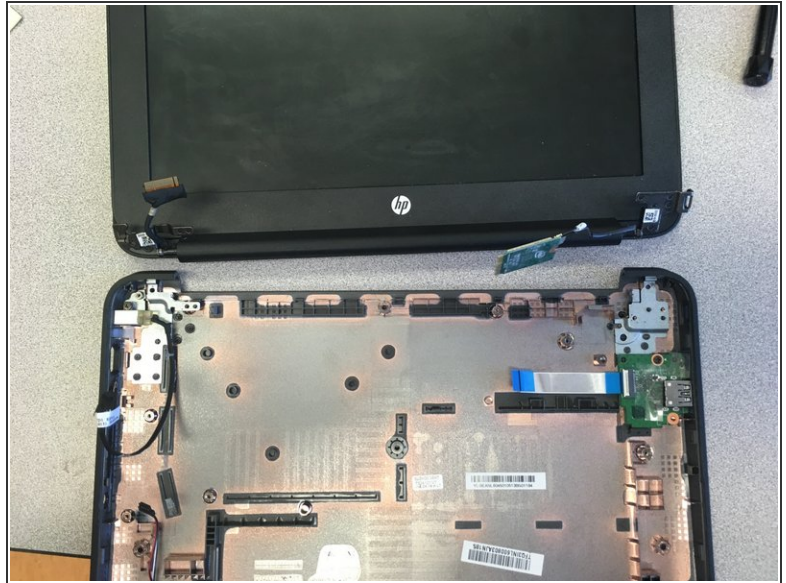
- Remove the 3 smaller screws on the system board
- Remove the one larger silver screw on the system board.
- Remove the screw holding the WiFi card in place.
- Remove the screw holding the battery in place.


Step 5 — Disconnect system board



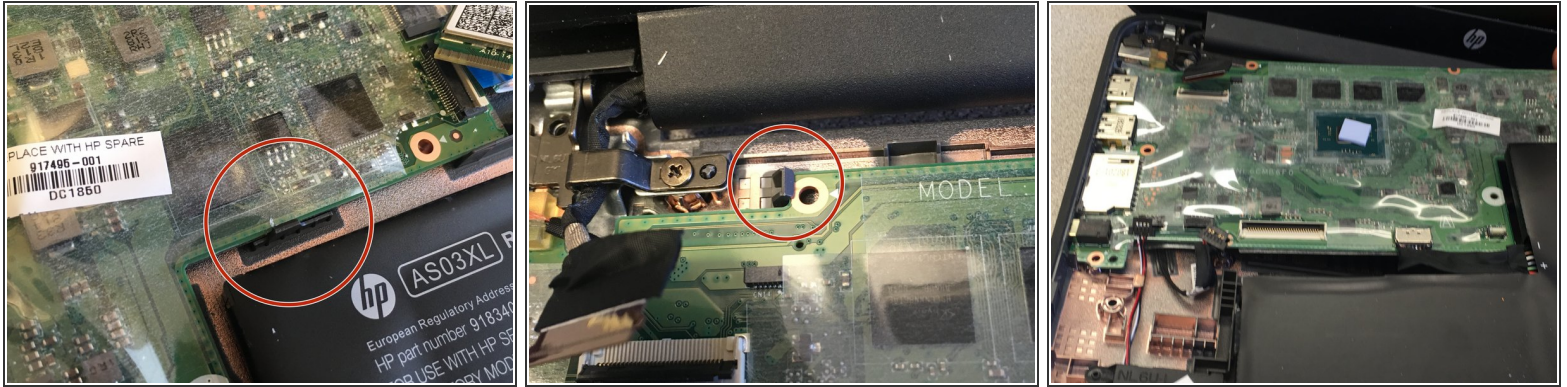
- Disconnect the 4 ribbons pictured that are connecting to the system board

Step 6 — Remove screen



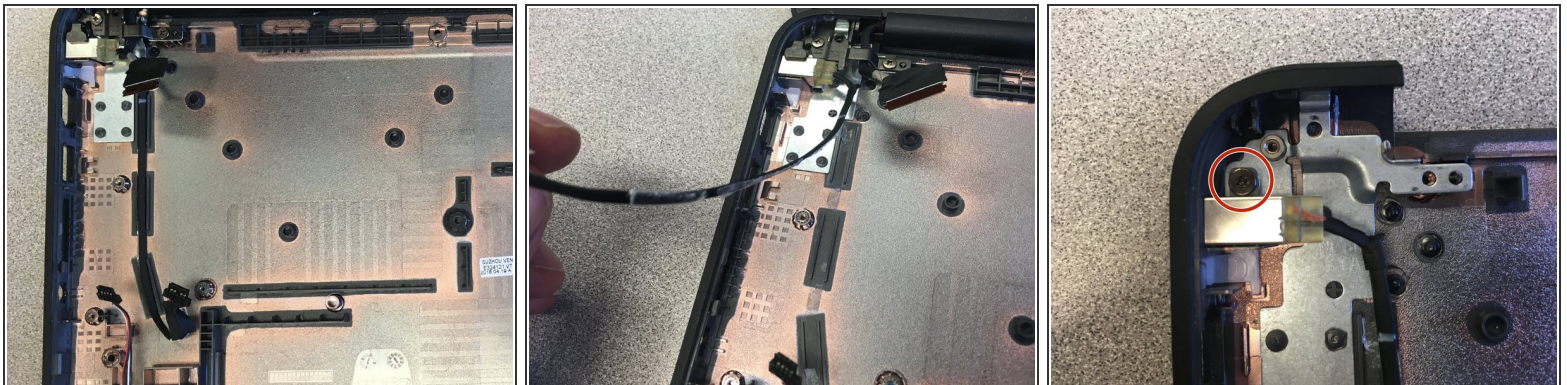
-  Remove the 4 screws holding the hinges to the frame. Be careful that when you loosen them, the screen doesn't fall.
- Once the screws are removed, carefully close the chromebook until it is only open at around a 20 degree angle, make sure the ribbon will not get caught, and slide the screen off of the Chromebook.
 - Set the screen off to the side.

Step 7 — Remove system board and battery



- Locate the plastic clips/tabs that are holding the system board down. There are 2. One by the battery and one by the left-side hinge.
- Carefully lift upward from the right-side the battery/system board all at the same time. You will need to lift it up and press in the first tab, and pull it out to the right.
- Set the system board and battery off to the side.

Step 8 — Replace dc in cable



- The DC IN cable will be stuck to the bottom assembly with adhesive. Peel up the cable.
- Remove the screw holding the DC IN cable in place.
- Connect the new replacement DC IN cable.
- Cut a piece of packing tape and use it to tape the replacement DC In cable to to the bottom plastic assembly.

To reassemble your device, follow these instructions in reverse order.