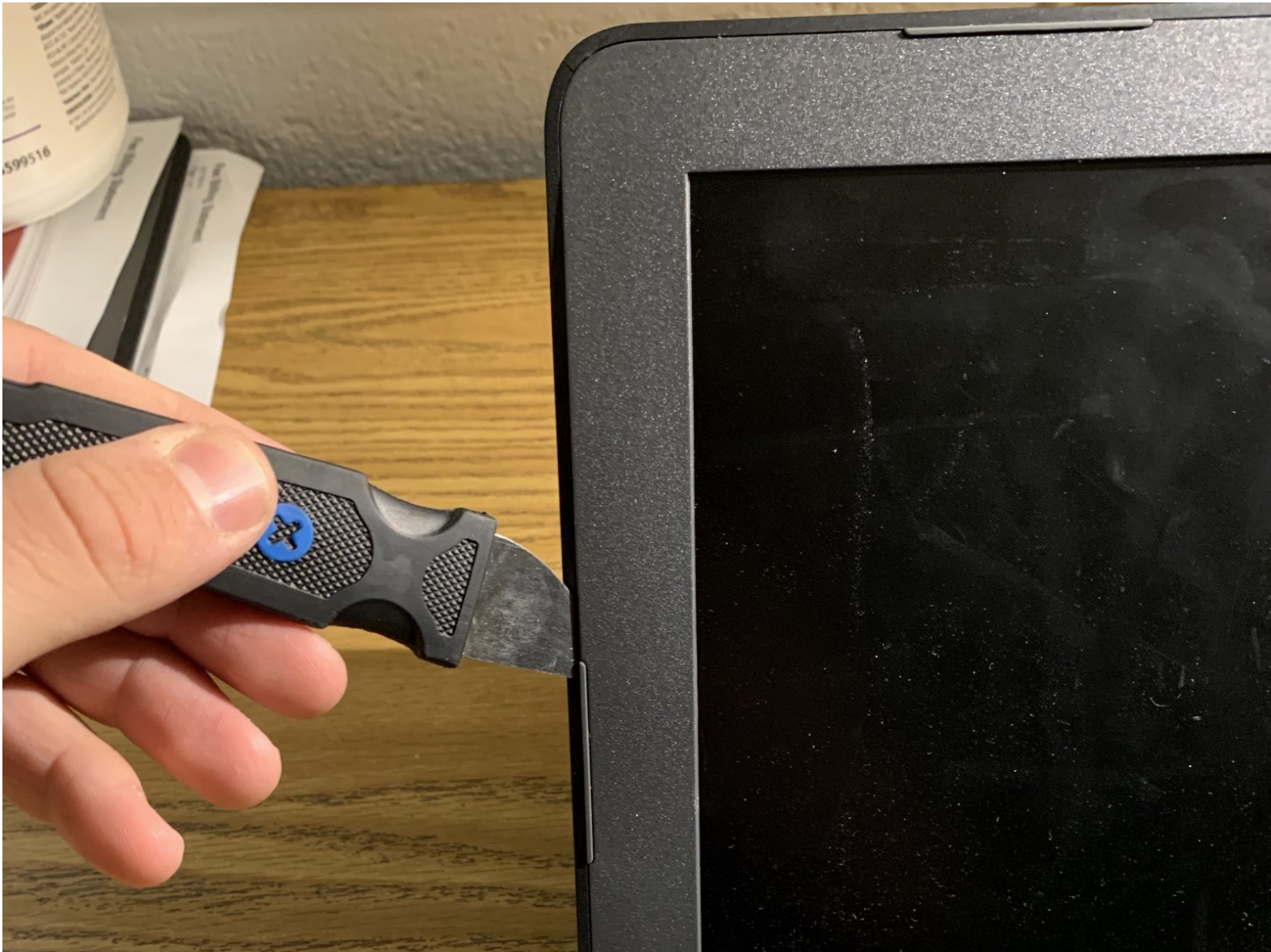




# HP Chromebook 11 G6 EE Screen Replacement

Replace the screen on an HP Chromebook 11 G6 EE

Written By: Korey Brand



# INTRODUCTION

This guide will show you how to replace a broken or defective screen on a Chromebook 11 G6 EE.



## TOOLS:

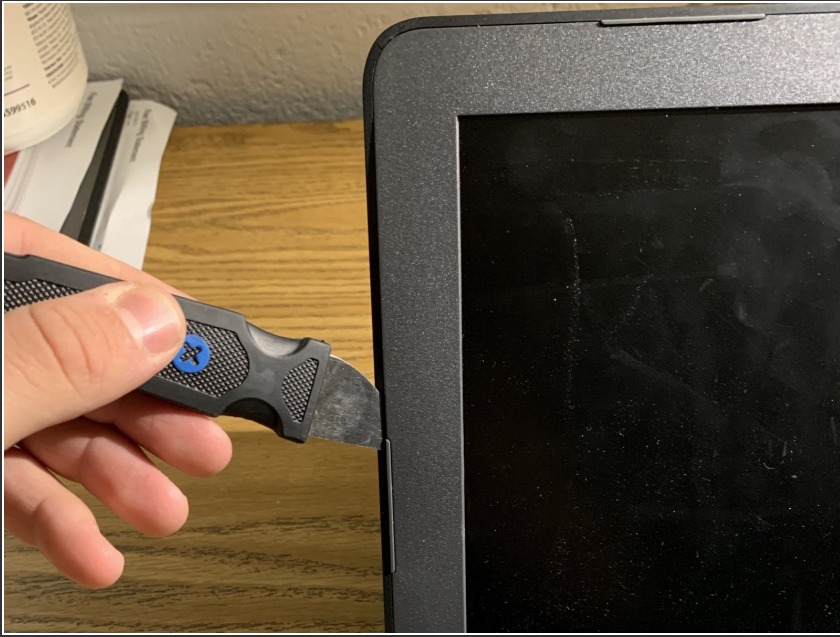
- [Jimmy](#) (1)
- [Spudger](#) (1)
- [Phillips #0 Screwdriver](#) (1)
- [Tweezers](#) (1)
- [Small Needle Nose Pliers](#) (1)



## PARTS:

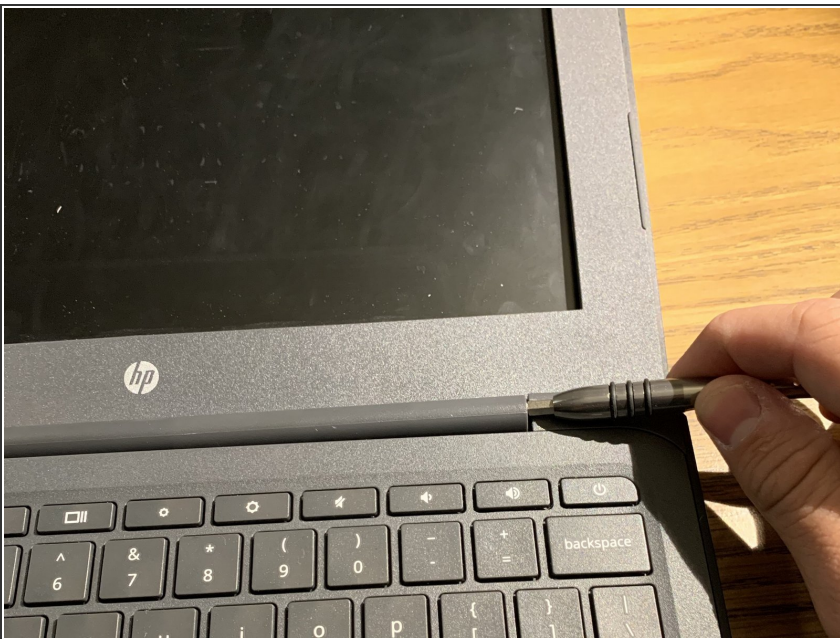
- [HP Chromebook screen](#) (1)

## Step 1 — Remove the plastic frame



- Remove plastic frame around screen.
- Use a plastic spudger, ifixit Jimmy, or any kind of thin sturdy tool to pry
- The new screens have adhesive so they may be difficult to get off the first time.

## Step 2 — Pry up the hinge cover



- Tilt screen back to get access to the hinge cover.
- Use a screwdriver pry the hinge cover loose to fully remove the frame.
- Be careful not to use too much force. The hinge cover could break off from the frame.

### Step 3 — Remove screws from the screen



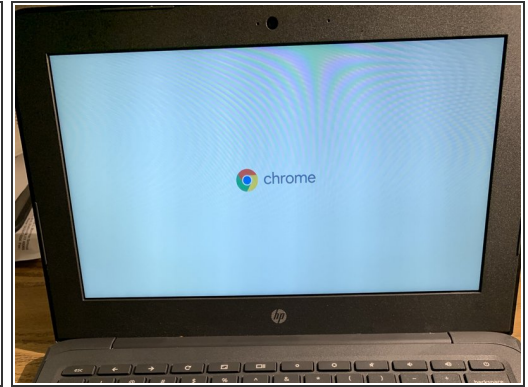
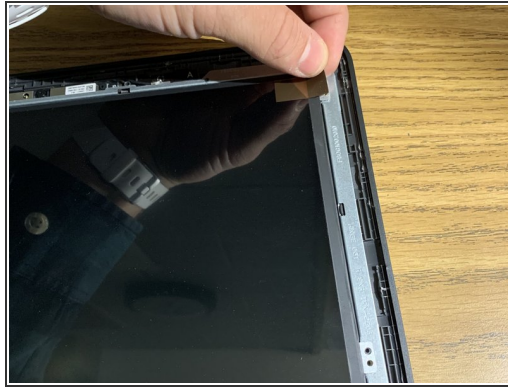
- Remove the screws from the metal brackets holding the screen in place.
- **The screws on the top do not need to be removed. Only the 4 screws on each side of the screen.**

## Step 4 — Remove the broken screen



- Flip the screen over onto the keyboard.
- Peel the sticker holding the screen connector in place.
- **The sticker is difficult to remove. I use a spudger to get it started and grab it with pliers or tweezers to pull it up.**
- Pull the connector loose. It should pop out very easily

## Step 5 — Install the new screen



- Slide the connector into the socket on the new screen.
- **The new screens do not come with the sticker. I recommend pulling the sticker off of the old screen and using it to hold the connector in place for the new screen.**
- Remove the protective film from the new screen and re-attach the screen with the screws.
- Snap the plastic frame back into place. It should snap back in very easily but be careful not to put extra pressure on the screen.

Check the screen to make sure it is functioning properly and be sure to check the camera to make sure the connection did not come loose during repair.