



HP Chromebook 11-2210nr Battery Replacement

To remove and replace a defective battery according to a HP Chromebook 11-2210nr.

Written By: Kimberly Rodriguez



INTRODUCTION

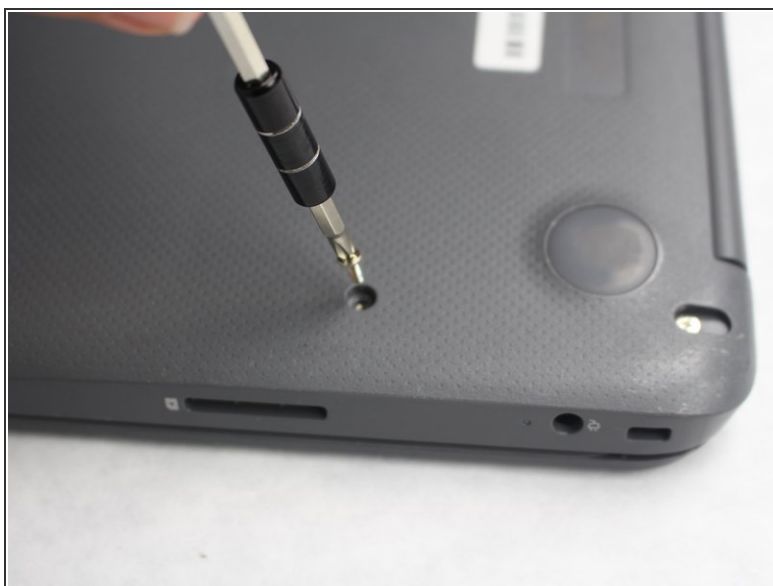
This guide will show you the correct way to remove the battery according to an HP Chromebook 11-2210nr in the need to replace a faulty or damaged battery. Once the battery is removed, access to speakers is more accessible.



TOOLS:

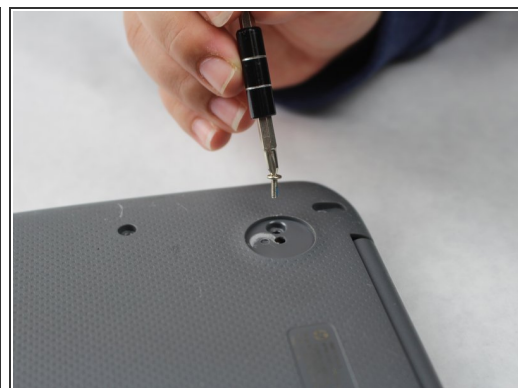
- [Phillips #1 Screwdriver](#) (1)
 - [Metal Spudger](#) (1)
 - [Spudger](#) (1)
 - [Tweezers](#) (1)
-

Step 1 — Battery



- Position your closed laptop face down to remove the 9 visible 6mm screws using the Phillips #1 screwdriver.

Step 2



- Using the metal spudger, remove the two bottom rubber pads located closer to the hinge of the laptop.
- Remove the two additional 6mm screws located beneath the rubber pads using the Phillips #1 screwdriver.
- ⓘ The other two bottom rubber pads do not obtain any screws.

Step 3



- Turn the Laptop over, and with the metal spudger start to run it along the plastic seam to pry it off.
- ⓘ You will hear popping sounds when you are sliding the spudger along the device.
- ⓘ For an easier removal, start from the sides and work your way in to the corners.

Step 4



- Carefully lift up the keyboard and gently place it towards you until the two ribbon wires become visible and place the keyboard down.
 - Locate where the two ribbon wires are being held in place by two chips.
- ⚠ This does not disconnect the keyboard from the laptop just yet.

Step 5

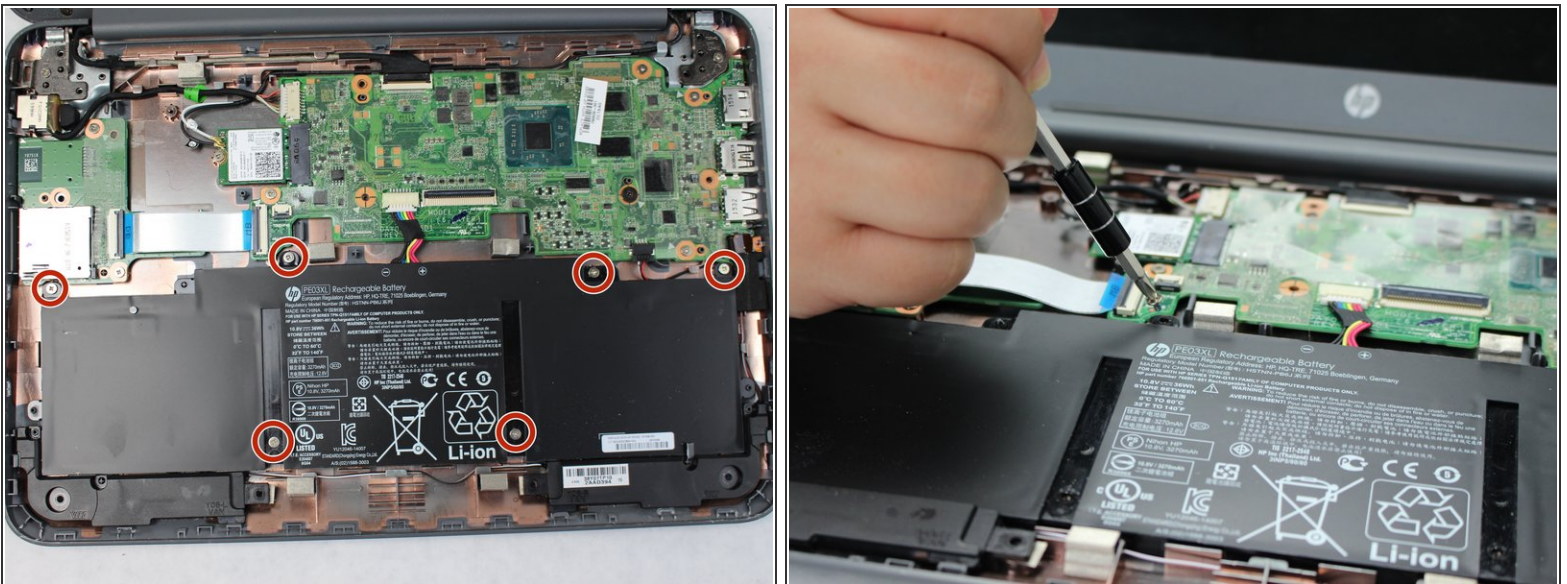


- Using the nylon spudger, push the plastic clasps holding the two ribbon wires up to properly disconnect the wires.

⚠ It is important to use the nylon spudger for this step to avoid any metal on metal circuit damage.

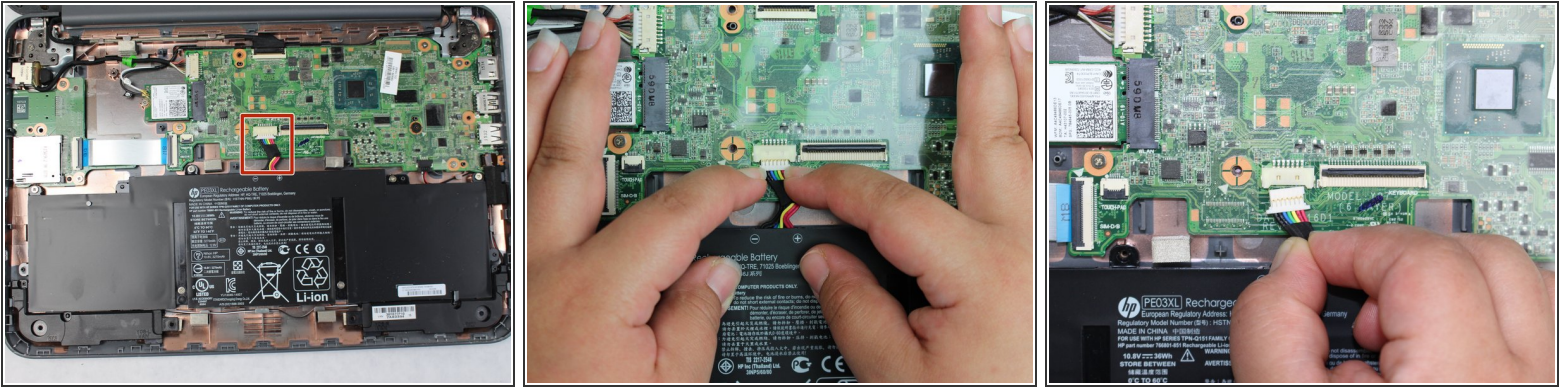
i This step completely disconnects the keyboard to allow safe removal.

Step 6



- Remove the six 4mm screws holding the battery in place with a Phillips #1 screwdriver.

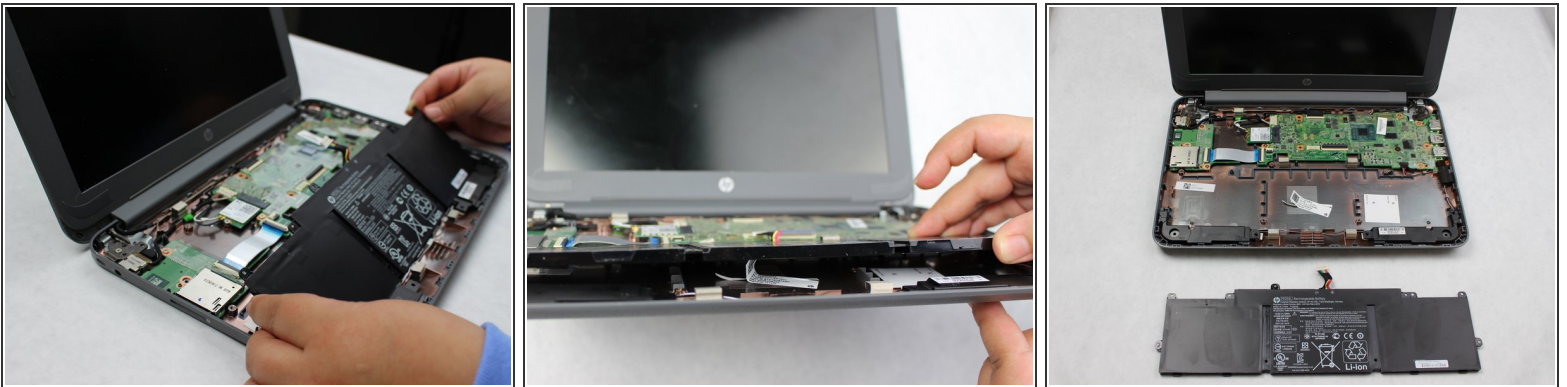
Step 7



- Carefully unplug the bundle power cable by pulling both edges towards you.

i This successfully disconnects the battery from the laptop.

Step 8



- Carefully lift the battery and safely remove it out of the laptop.

i The battery may have an adhesive sticker attached to the bottom, if so apply more force when lifting up.

To reassemble your device, follow these instructions in reverse order.