



HP Chromebook 11-v002dx WiFi Card Replacement

Replace your WiFi card when internet connection is bad or not working.

Written By: Abby Zilvitis



INTRODUCTION

This guide will walk you through easy steps in order to change the wifi card for your HP Chromebook 11-v002dx.

You may want to try cleaning the area connecting the wifi card to your laptop before replacing your card entirely, as dust can occasionally accumulate and prevent the wifi card from functioning.

TOOLS:

- [Tweezers](#) (1)
 - [Phillips #0 Screwdriver](#) (1)
 - [iFixit Opening Tools](#) (1)
-

Step 1 — Keyboard



! Working with your device plugged in may result in electric shock. Be sure to power off your device and unplug it from any power source before proceeding with step one.

- Place your laptop bottom up on your work space.
- Use a Phillips #0 screwdriver to remove the eleven 0.2 mm screws, including the six from underneath the adhesives.

Step 2



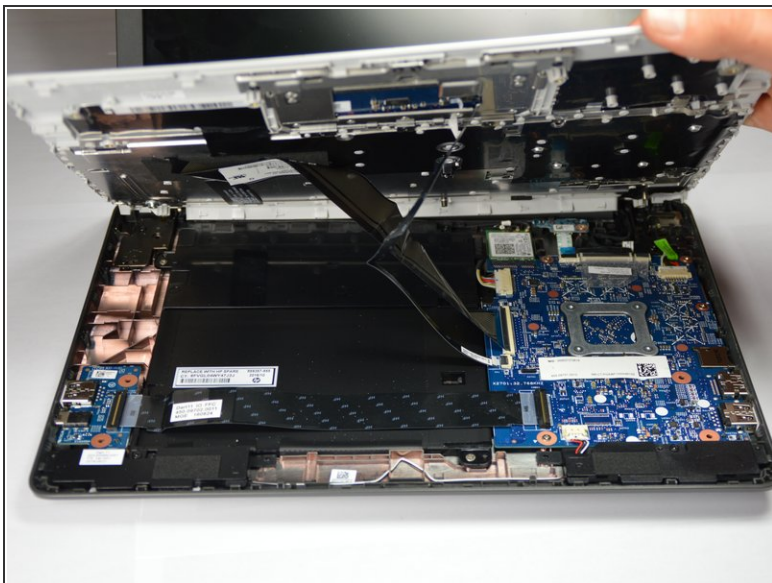
- Using a sharp tool, remove the six adhesives from the bottom of your laptop to expose the screwheads underneath. Two of the pads are small and four are larger.

Step 3



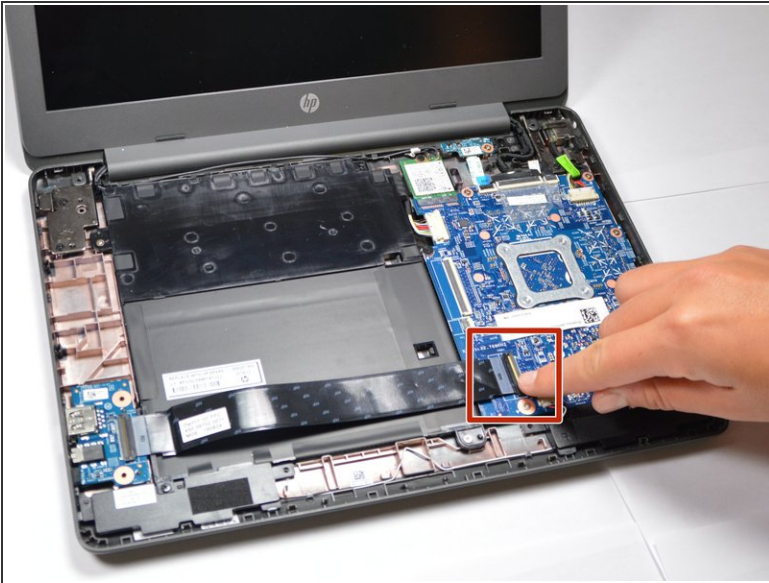
- Use a plastic opening tool to loosen the keyboard face from the device.
- Start prying at one end of the laptop and slowly work your way around so as not to break the keyboard.

Step 4



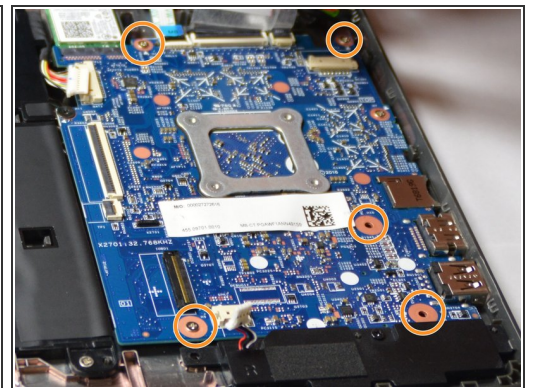
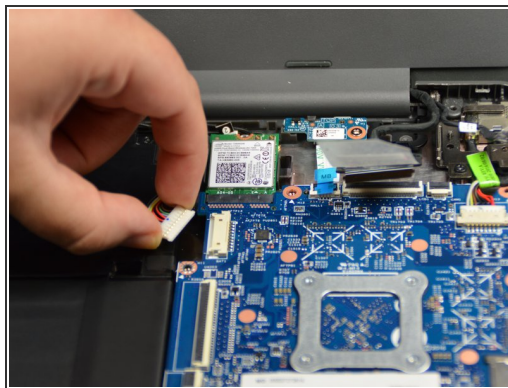
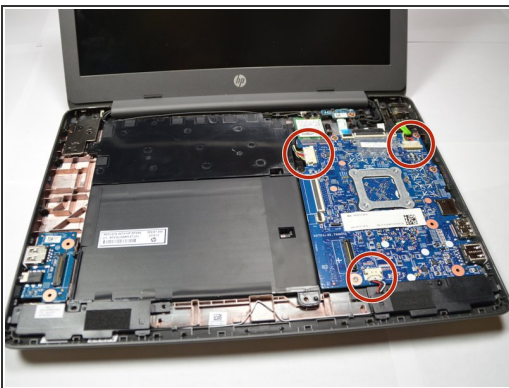
- Lift the keyboard so that the inner workings of the laptop are exposed.
- Gently pull each of the two ribbons connecting the keyboard to the device so that neither ribbon is still connected to the device, only to the keyboard.

Step 5 — Motherboard



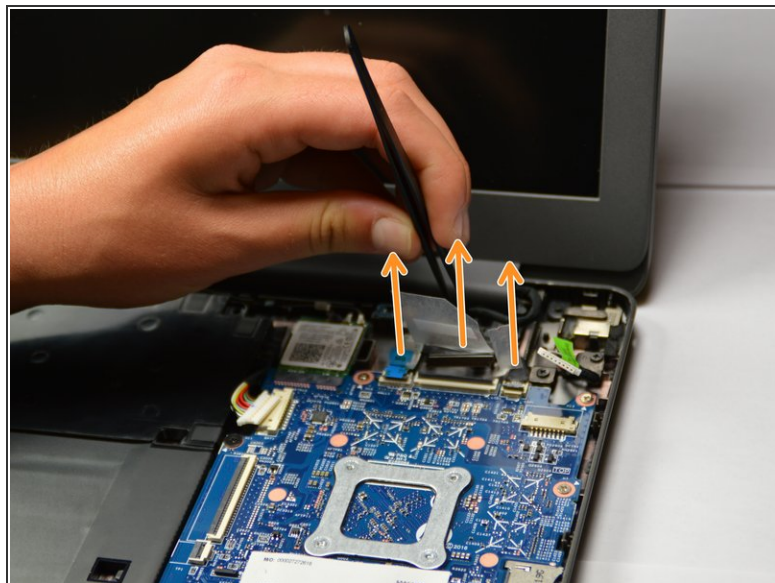
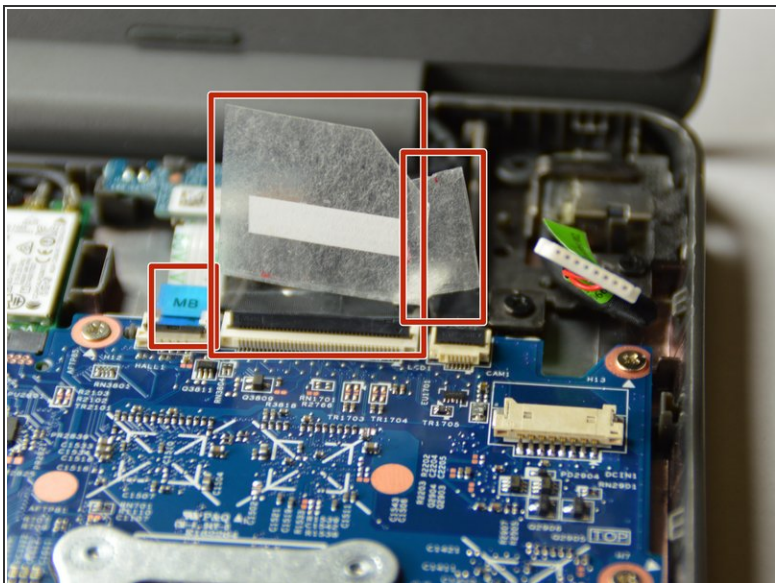
- Pinch the thin black bar which holds the right side of the black ribbon down, and flip it up.
- Gently pull the ribbon out of the black holder on its right, then out of the left side as well.

Step 6



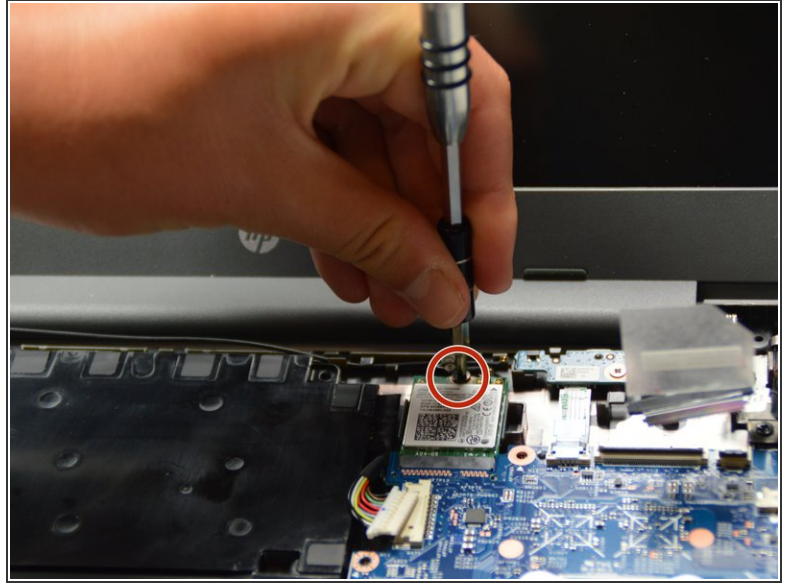
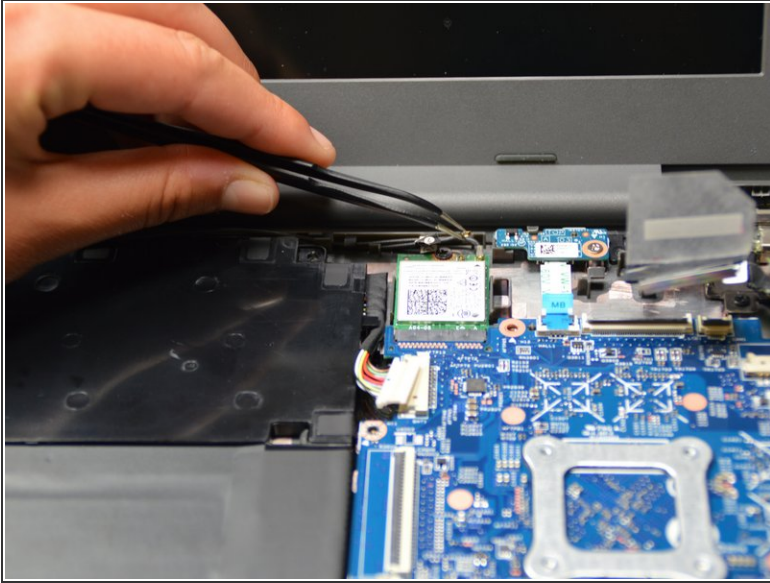
- Squeeze the three white connectors on their sides to disconnect them.
- Use your Phillips #0 screwdriver to unscrew the five 0.2 mm screws from the motherboard.

Step 7



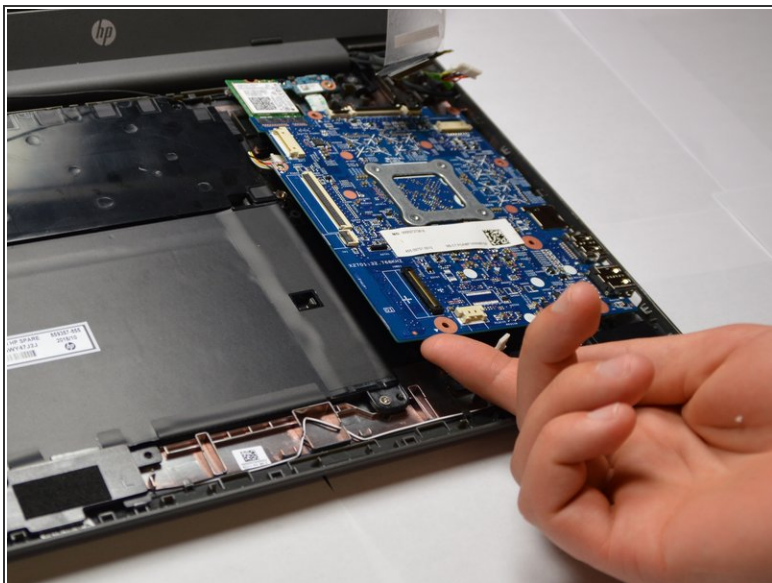
- Flip up the two clear tabs and the blue tab at the top of the motherboard.
- Use your tweezers to lift each tab away so their connected components are no longer attached to the motherboard.

Step 8



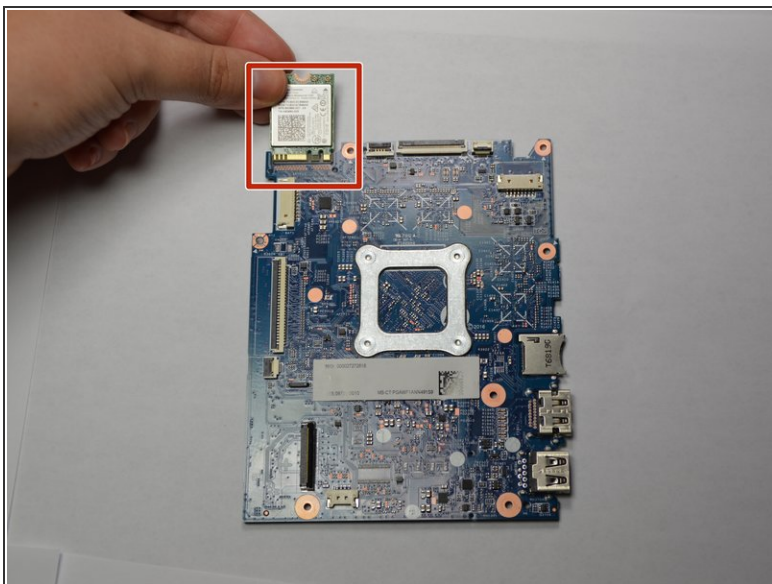
- Use your tweezers to pull the two metal pieces connecting the two wires to the top of the green wifi card above the motherboard.
- Use your Phillips head screwdriver to unscrew the 0.2 mm screw from the wifi card.

Step 9



- Grab the motherboard on its bottom right corner and pull it out of the laptop.
- ⓘ Ensure all connection points and motherboard are free of dust and any stickiness, then if necessary replace entire motherboard.

Step 10 — WiFi Card



- Pull the green wifi card out of the motherboard.

To reassemble your device, follow these instructions in reverse order.