



HP Chromebook 11-v011dx Screen Replacement

How to replace a broken screen in the HP Chromebook 11-v011dx.

Written By: Kyle DeMello



INTRODUCTION

Screens can become damaged in many ways. This guide will help replace the screen.



TOOLS:

- [Spudger](#) (1)
 - [Phillips #0 Screwdriver](#) (1)
-

Step 1 — Key Board



- Wedge the spudger between one of the black rubber caps on each of the four corners on the bottom of the HP Chromebook 11-v011dx.
- Lift up the black rubber cap until it is completely removed.
- Repeat this until all four of the black rubber caps are removed.

Step 2



- Locate the two smaller black rubber caps on the top corners of the HP ChromeBook 11-v011dx. Wedge the spudger between one of them.
- Lift up the small black rubber cap until it is completely off.
- Repeat this step one more time to remove the other small black rubber cap on the other side.


Step 3



- Locate the eleven screws on the bottom the HP ChromeBook. Six are located under the larger black rubber caps and the others are in different locations.
- Use a Phillips #0 screwdriver to remove eleven 1.3mm screws.

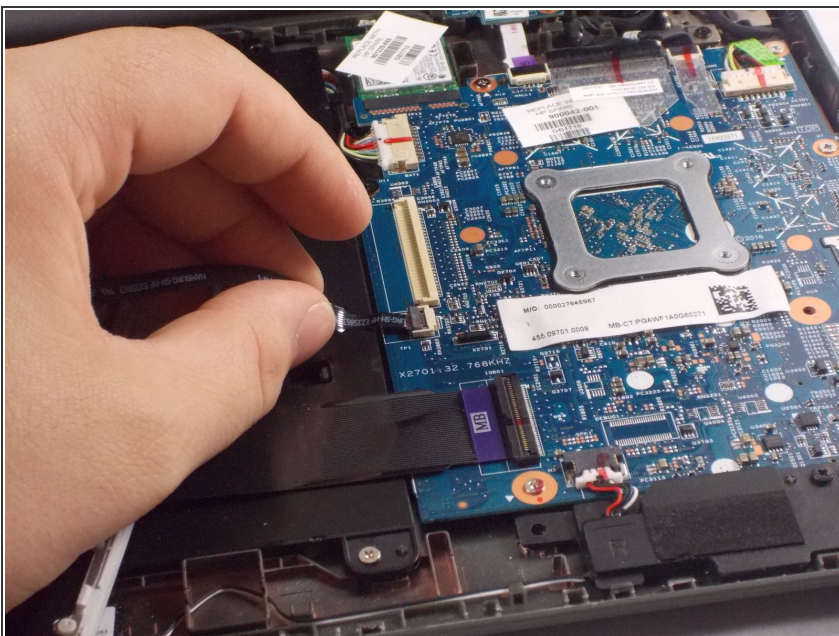
Step 4



 Make sure to do steps 1-3 or it will be impossible to lift up the key board and you may also do damage to the hardware.

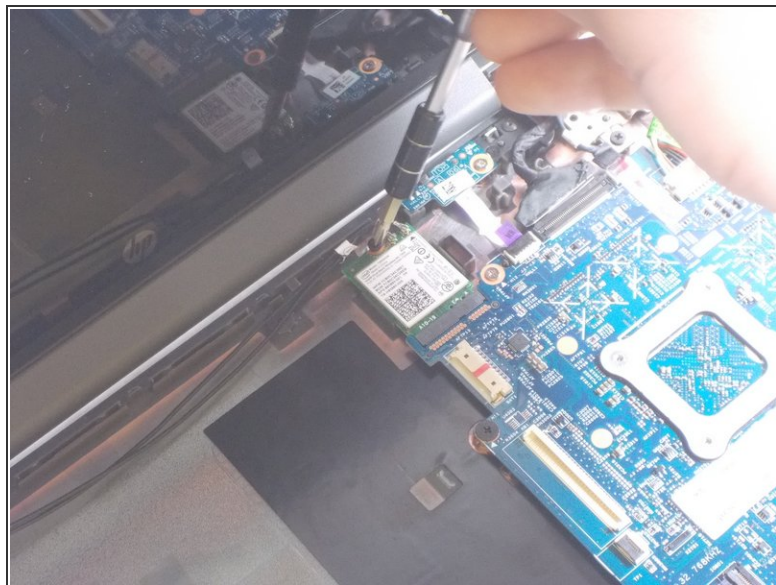
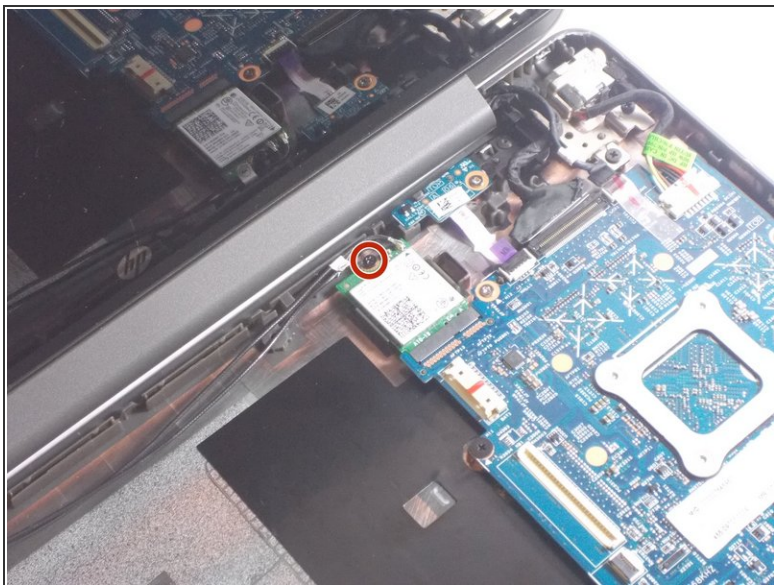
- Wedge the spudger between the key board and the bottom panel, carefully go around the keyboards edges gently.
- Lift the spudger a little in the front of the keyboard until the key board lifts up.
- With your hands, slowly and carefully lift the key board up.

Step 5



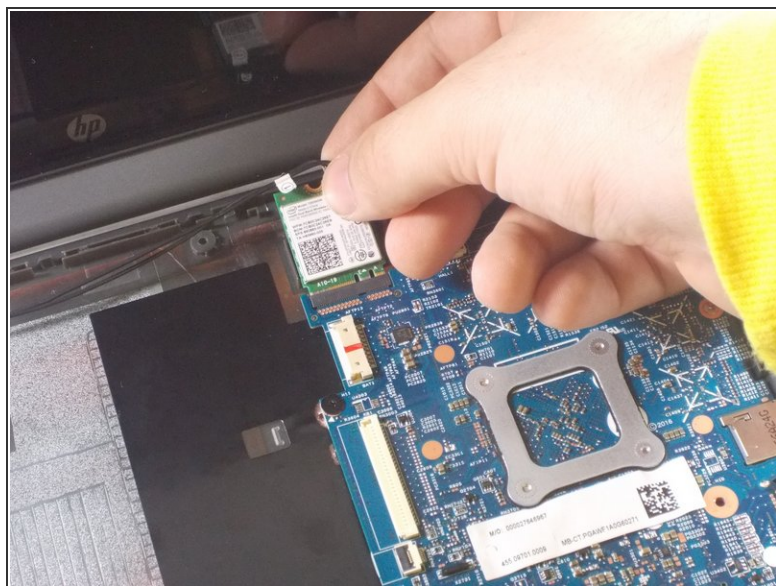
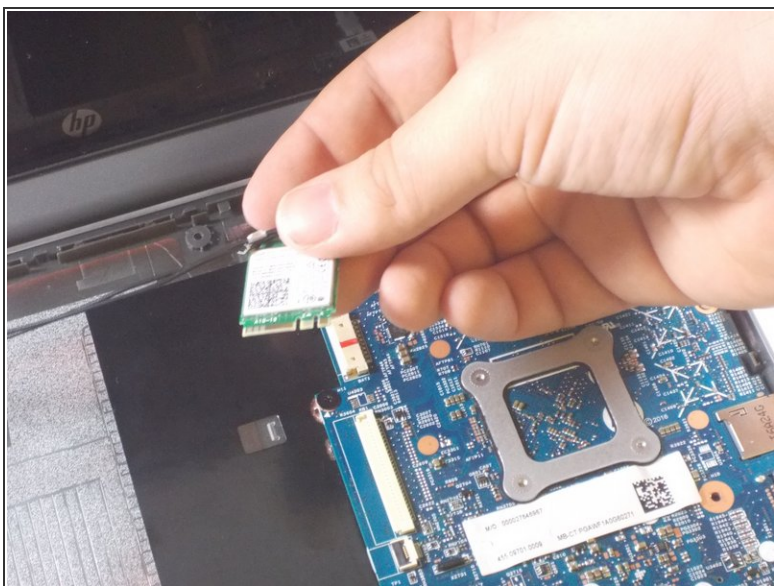
- Locate the black tab that holds a wire in place that keeps the keyboard connected to the motherboard.
- Slowly unplug this wire that connects to the key board.

Step 6 — Screen



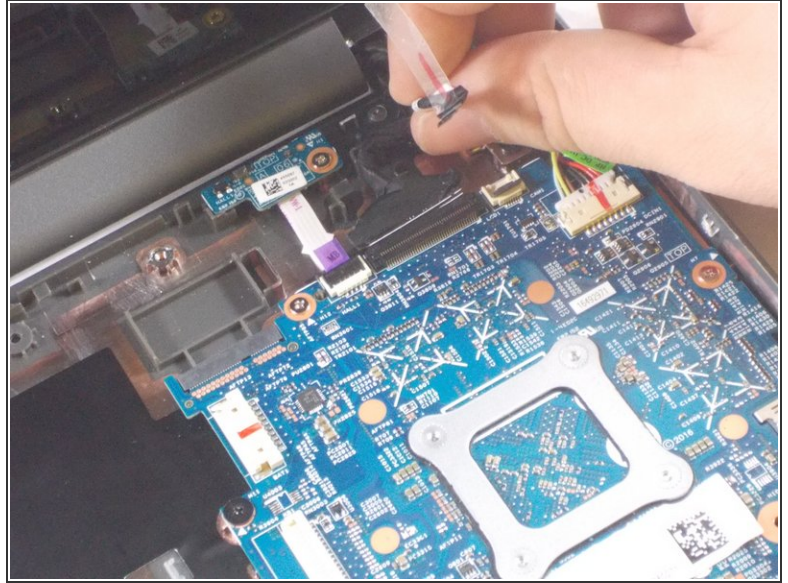
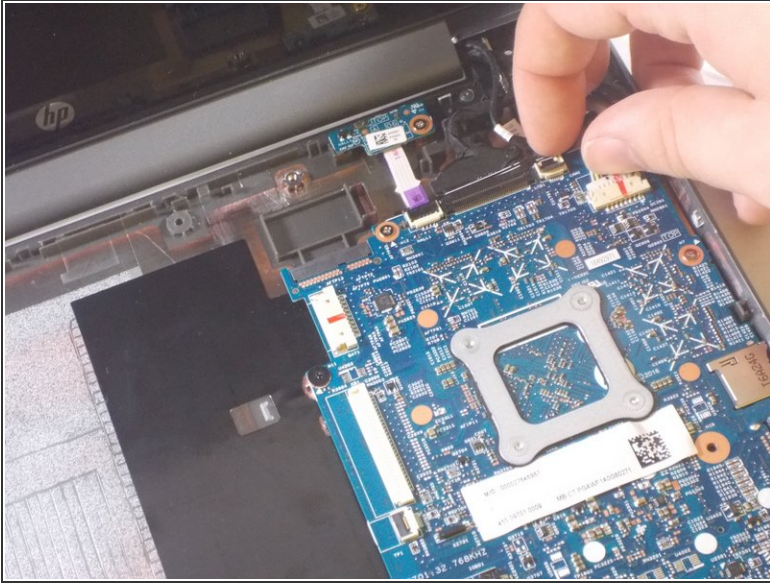
- Use a Phillips #0 screwdriver to remove the 1.3 mm screw that holds the wireless card.

Step 7



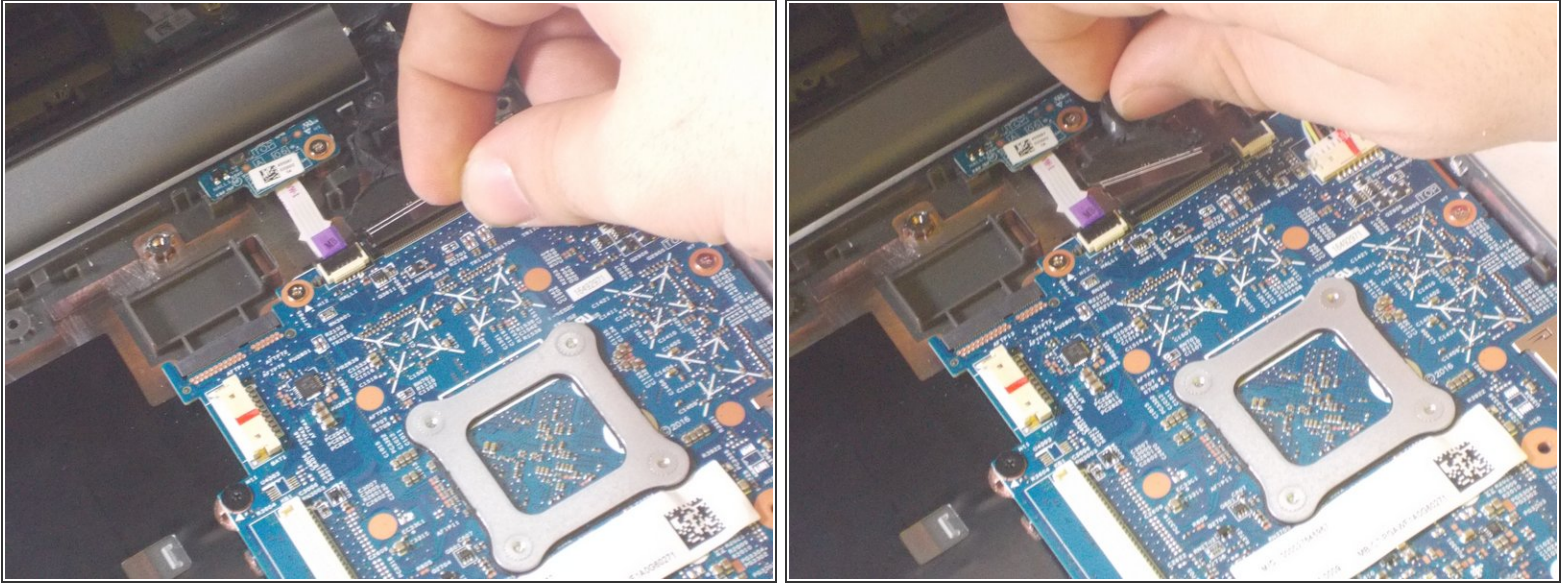
- Remove the wireless card from the motherboard with your own hand.

Step 8



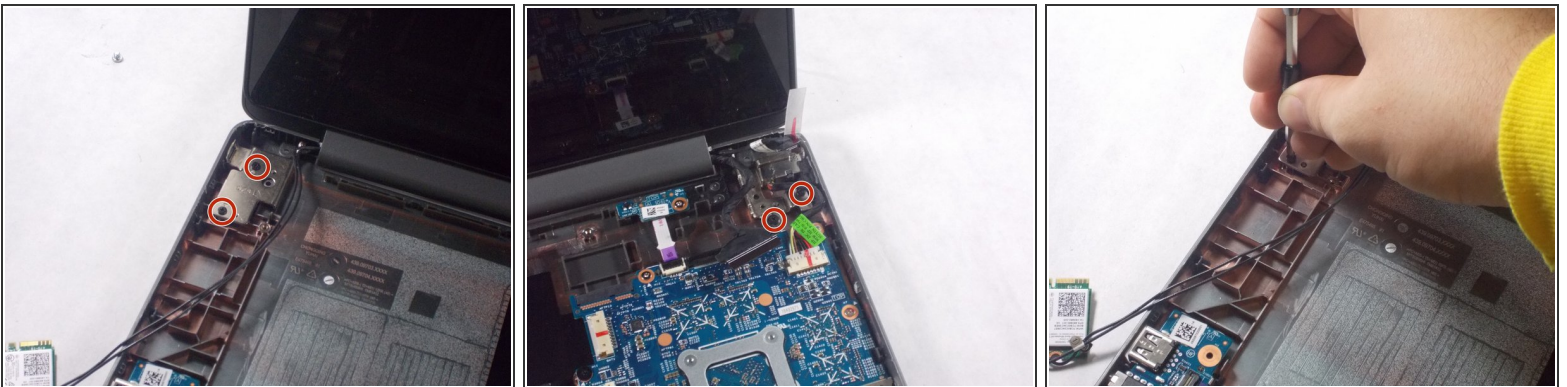
- Find the wire that connects the screen to the motherboard.
- Lift black tab that holds the wire in place.
- Remove the wire.

Step 9



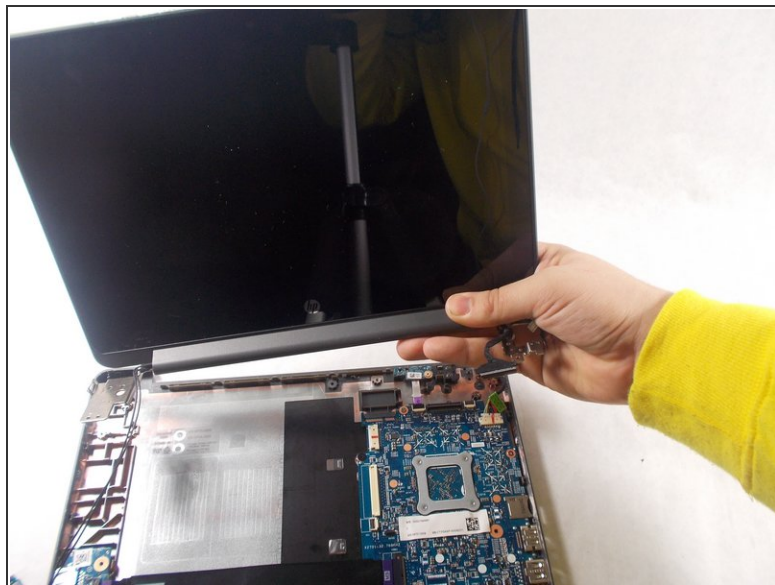
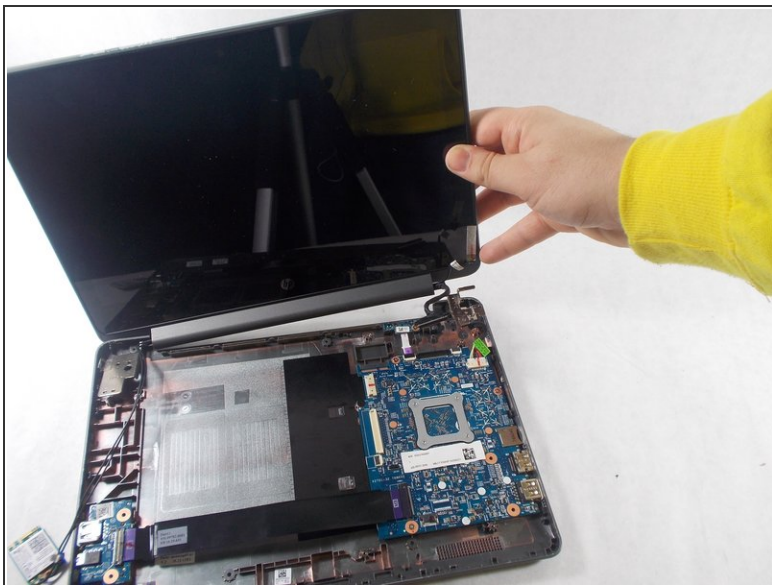
- Find the display cable that connects the screen to the motherboard.
- Lift black tab that holds the display cable in place.
- Remove display cable.

Step 10



- Use a Phillips #0 screwdriver to remove the four 1.3mm screws that hold the screen in place.
- ❗ Two screws are on the left of the laptop and two are on the right of the laptop.

Step 11



 Be careful when removing the screen so it doesn't get caught on any wires.

- Remove the screen from the laptop.

To reassemble your device, follow these instructions in reverse order.