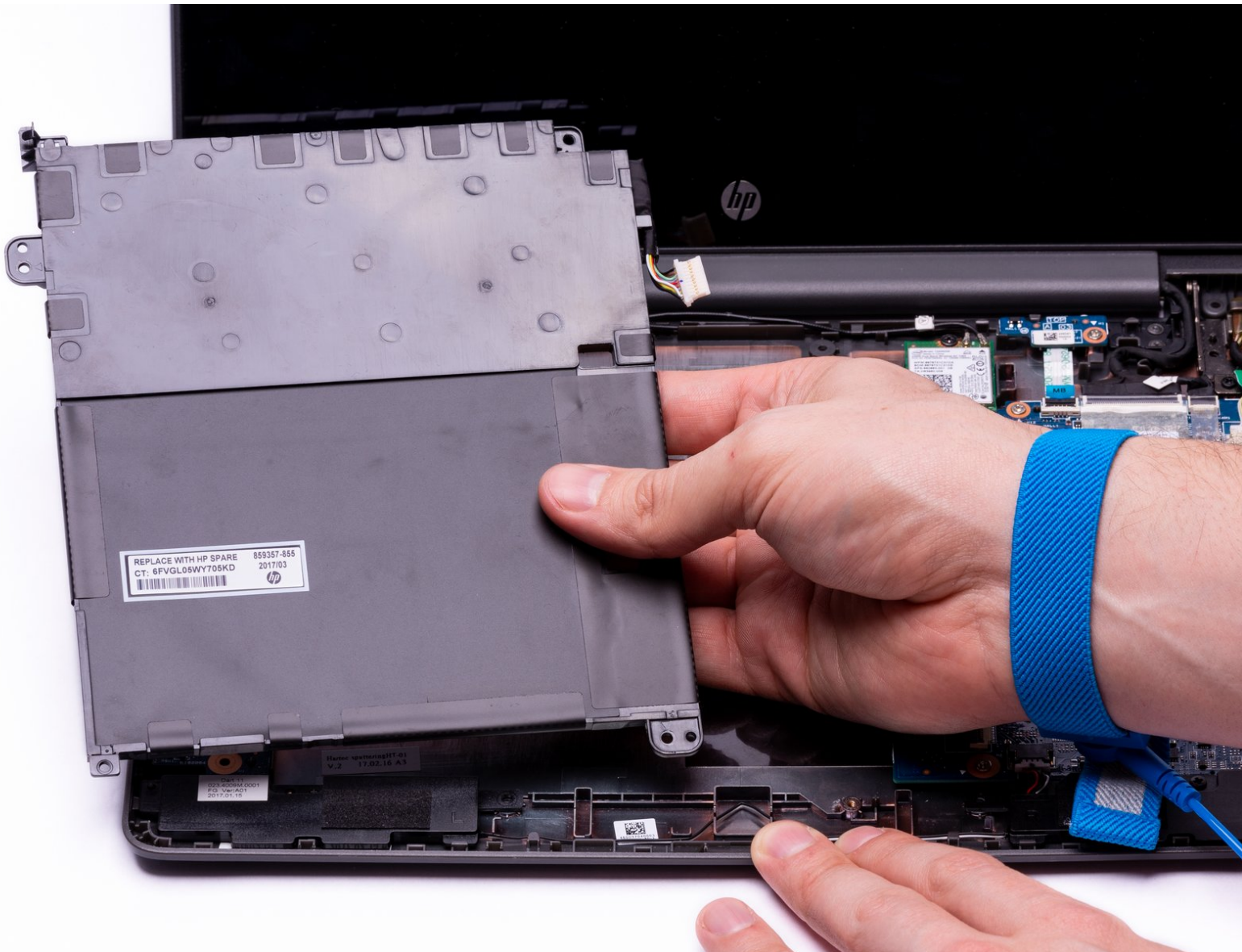




HP Chromebook 11-v019wm Battery Replacement

How to replace the battery in the HP Chromebook 11-v019wm.

Written By: Jordan Lanham



INTRODUCTION

The Battery Replacement Guide provides the steps required to replace the battery in the HP Chromebook 11-v019wm. If the HP Chromebook is over heating, failing to charge, or requiring a constant charge then it might be time to replace the battery. Replacing the battery will increase the battery life, and ensure the device operates at its maximum efficiency. Removing the battery is also required for removal of other components within the HP Chromebook. Prior to replacing the battery, ensure all [battery troubleshooting steps](#) have been completed. This guide is rated moderate due to the removal of the keyboard and multiple ribbon cables.

Removal of the keyboard will expose the internal components of the computer. These components are electrostatic discharge (ESD) sensitive components. It is important to ensure that an anti-static wrist strap and anti-static mat are used to prevent ESD from damaging other components inside of the device. For proper use of the anti-static wrist strap, refer to iFixit's "[How to set up your Anti-static mat and wristband](#)" Guide.



TOOLS:

- [Phillips #00 Screwdriver](#) (1)
 - [iFixit Precision Bit Driver](#) (1)
 - [Anti-Static Wrist Strap](#) (1)
 - [Spudger](#) (1)
 - [Halberd Spudger](#) (1)
-

Step 1 — Keyboard




- Disconnect the power adapter from the charging port and remove all external media devices from the Chromebook.
- Turn the Chromebook over so the bottom of the computer is facing upwards with the hinge facing away.

Step 2



- Remove the (4) rubber feet with the plastic spudger to reveal the screws underneath.

 *The rubber feet are secured with adhesive and may take time to remove.*

Step 3



- Remove the (2), oval shaped, rubber screw protectors near the hinge of the Chromebook.

(i) The rubber screw protectors are secured with adhesive and may take time to remove.

Step 4



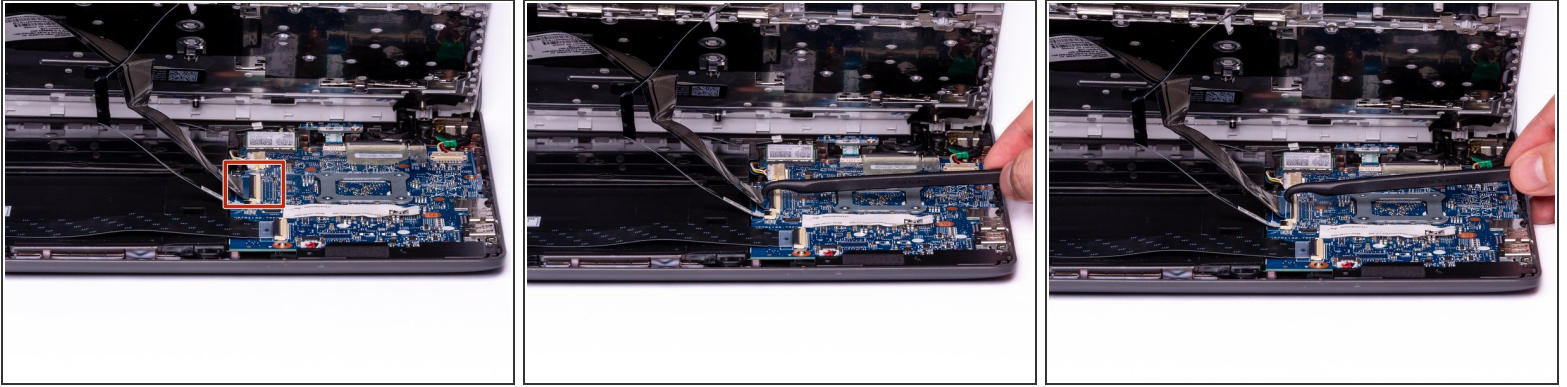
- Remove the (11) 5.2 mm screws using a Phillips #00 Screwdriver.

Step 5




- Place the Chromebook upright and open the screen all the way.
- Starting towards the hinge, insert the spudger between the silver keyboard decking and the charcoal colored casing.
- Pry upwards to release the tabs that are securing the keyboard to the casing.
- Repeat this process around the perimeter of the keyboard to ensure all tabs are released.
- Once all the tabs are released, **gently** lift the keyboard to gain access to the (2) Zero Insertion Force (ZIF) ribbon cables.

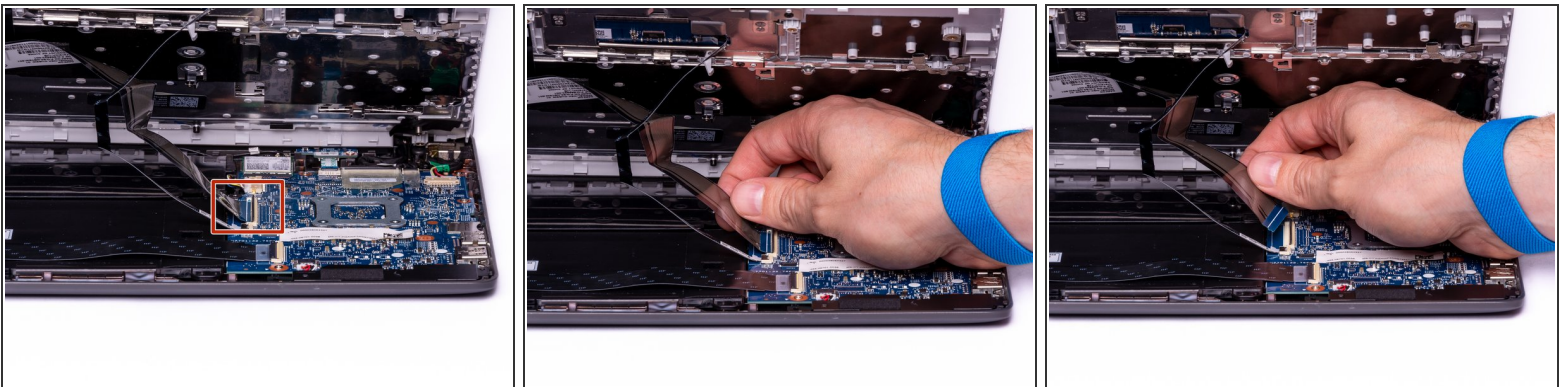
Step 6



- Using the hook on the Halberd Spudger, lift up the ZIF connector tab for the keyboard ribbon cable. The keyboard ribbon cable is the larger of the two ribbon cables.

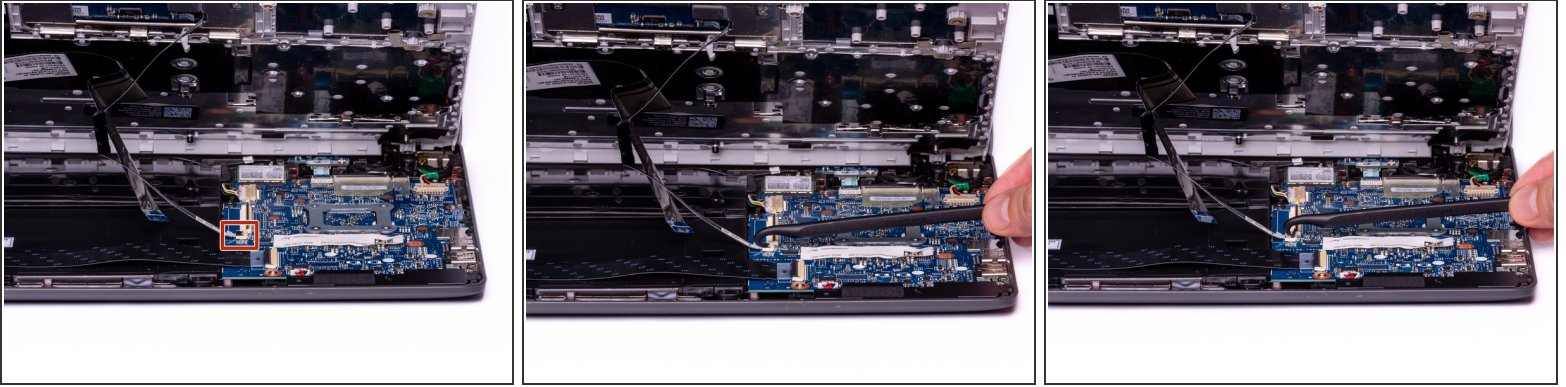
 *The remaining steps should be completed with the anti-static wrist strap to prevent damage to electrostatic discharge (ESD) sensitive components.*

Step 7



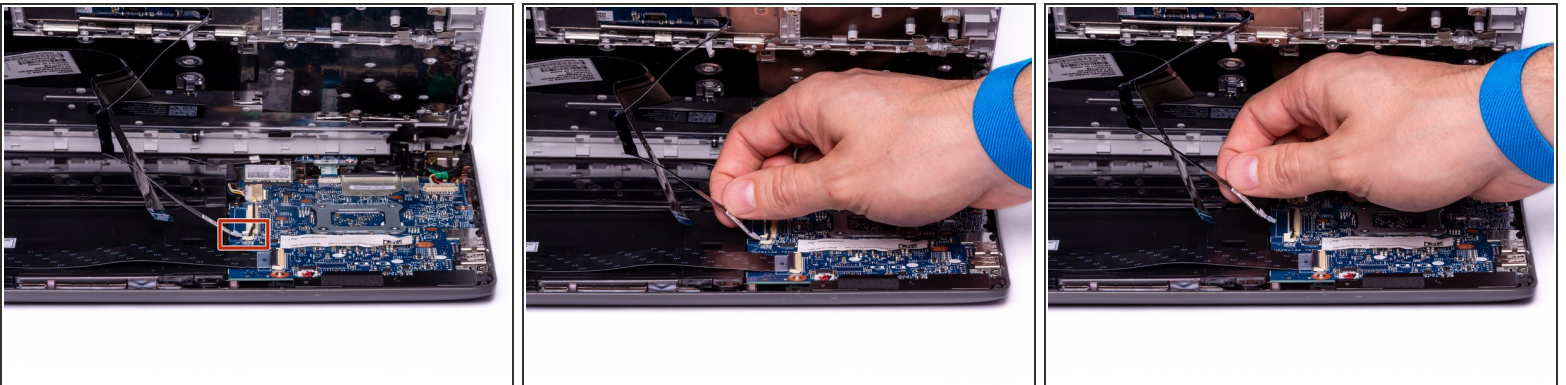
- With the ZIF connector tab in the upright position, use your fingers to gently pull the keyboard ribbon cable out of the ZIF connector.

Step 8



- With the hook on the Halberd Spudger, lift the ZIF connector that is holding the Touchpad ribbon cable. The Touchpad ribbon cable is the smaller of the two ribbon cables.

Step 9



- With the ZIF connector tab in the upright position, use your fingers to gently pull the Touchpad ribbon cable out of the ZIF connector.

Step 10



- With both ribbon cables disconnected, the keyboard can now be safely removed from the Chromebook.

Step 11 — Battery



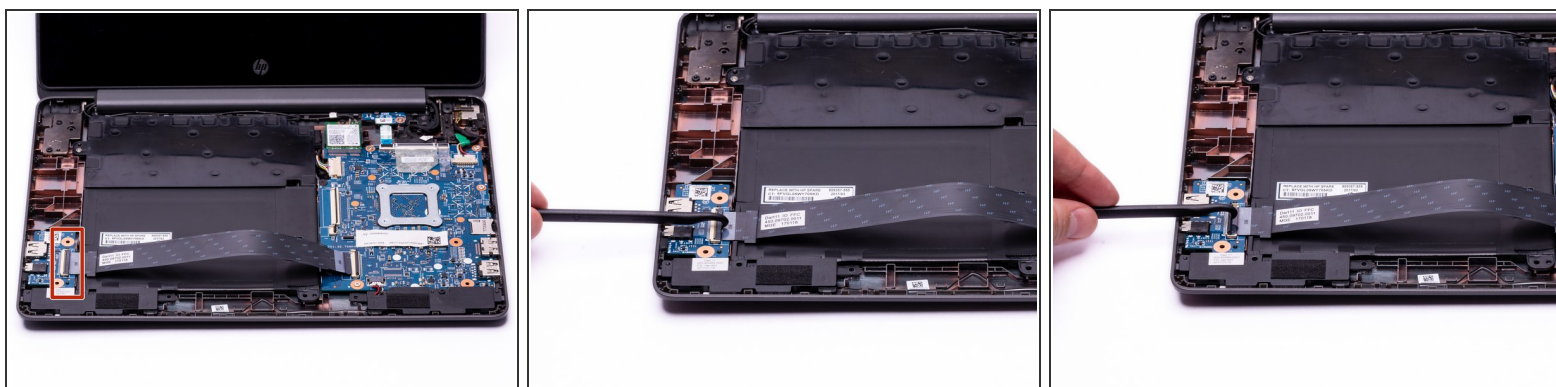
- Using the hook on the halberd spudger, lift the external media board ZIF connector attached to the motherboard.
- ⓘ The external media ribbon cable spans across the battery and is connected to the external media board on the left, and motherboard on the right.

Step 12



- With the external media board ZIF connector lifted, using your fingers, gently remove the media cable from the motherboard.

Step 13



- Using the hook on the halberd spudger lift the ZIF connector on the External Media Board.

Step 14



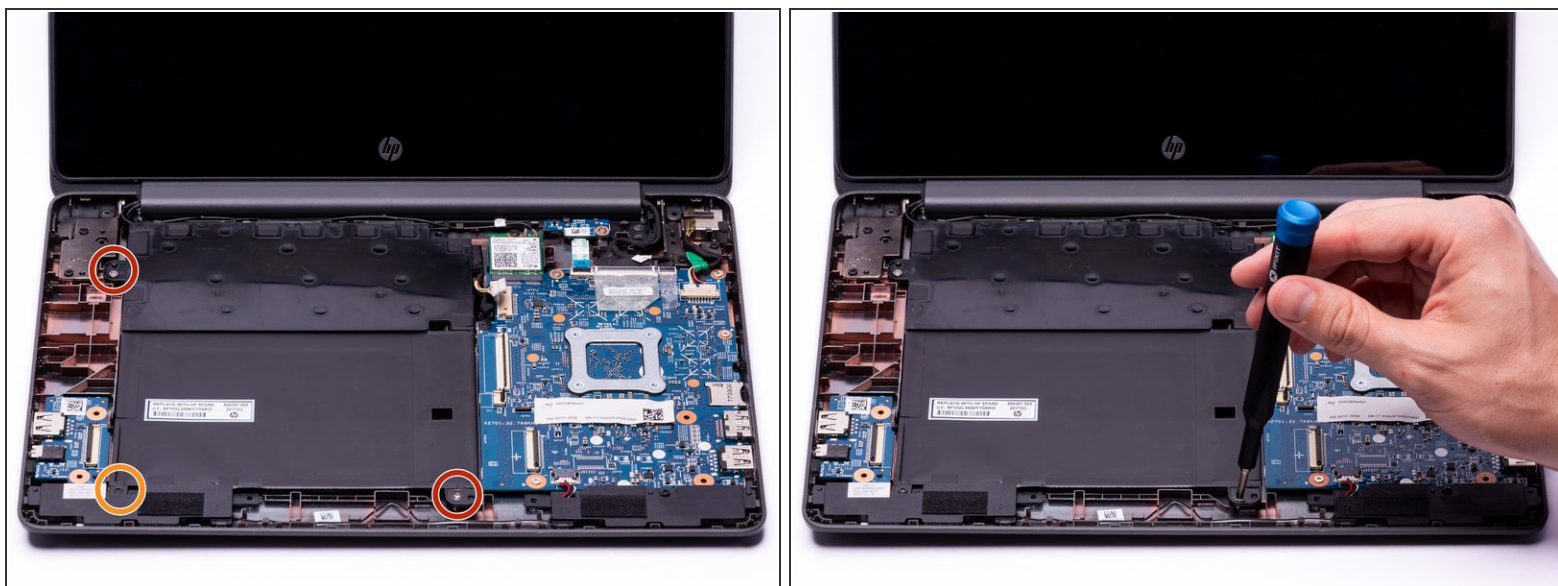
- With the ZIF connector in the upright position, use your fingers to gently remove the media cable completely from the computer assembly.

Step 15



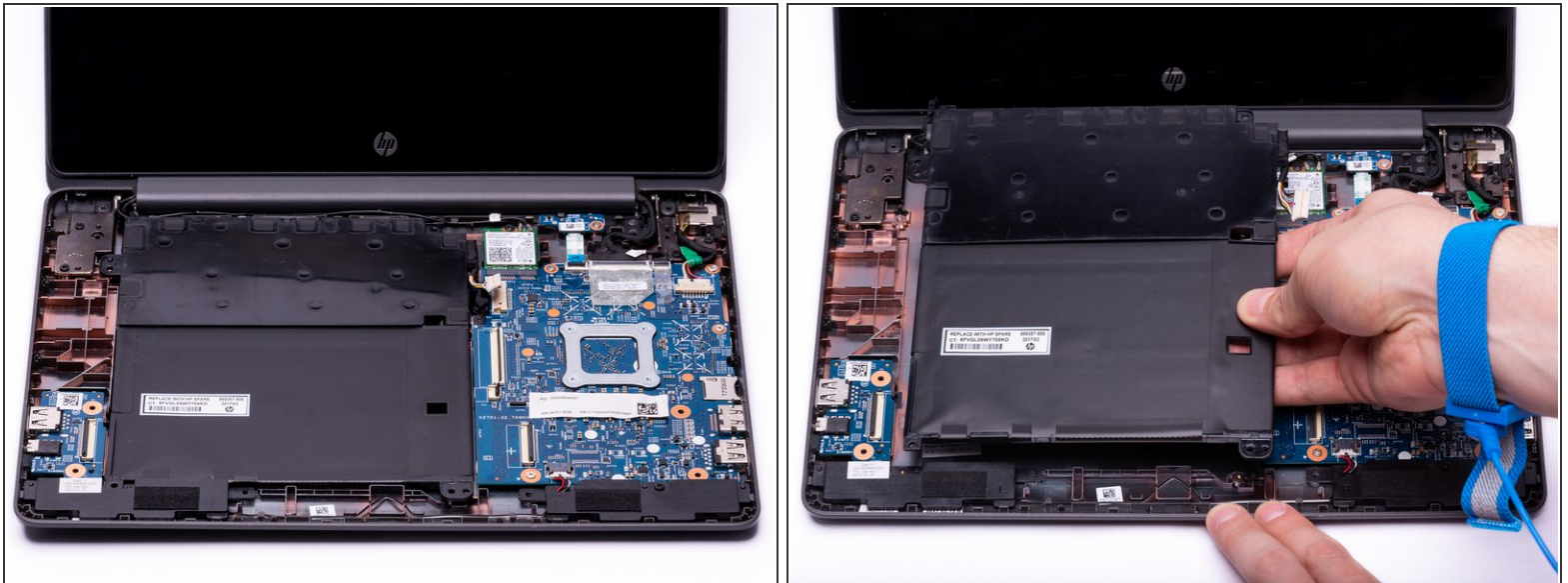
- Use either end of the spudger to remove the battery bundled cable connector from the motherboard.

Step 16



- Using a Phillips #00 Screwdriver, remove the two silver 3.4 mm screws from the battery.
- Using a Phillips #00 Screwdriver, remove the black 4.8 mm screw from the battery. This screw also secures the left speaker to the casing.

Step 17



- Gently lift the battery out of the casing.

⚠ The WLAN Antenna cables run through a tab in the top left corner of the battery. To avoid damaging the cable, ensure the WLAN Antenna cables are out of the way before removing the battery.

To reassemble your device, follow these instructions in reverse order.