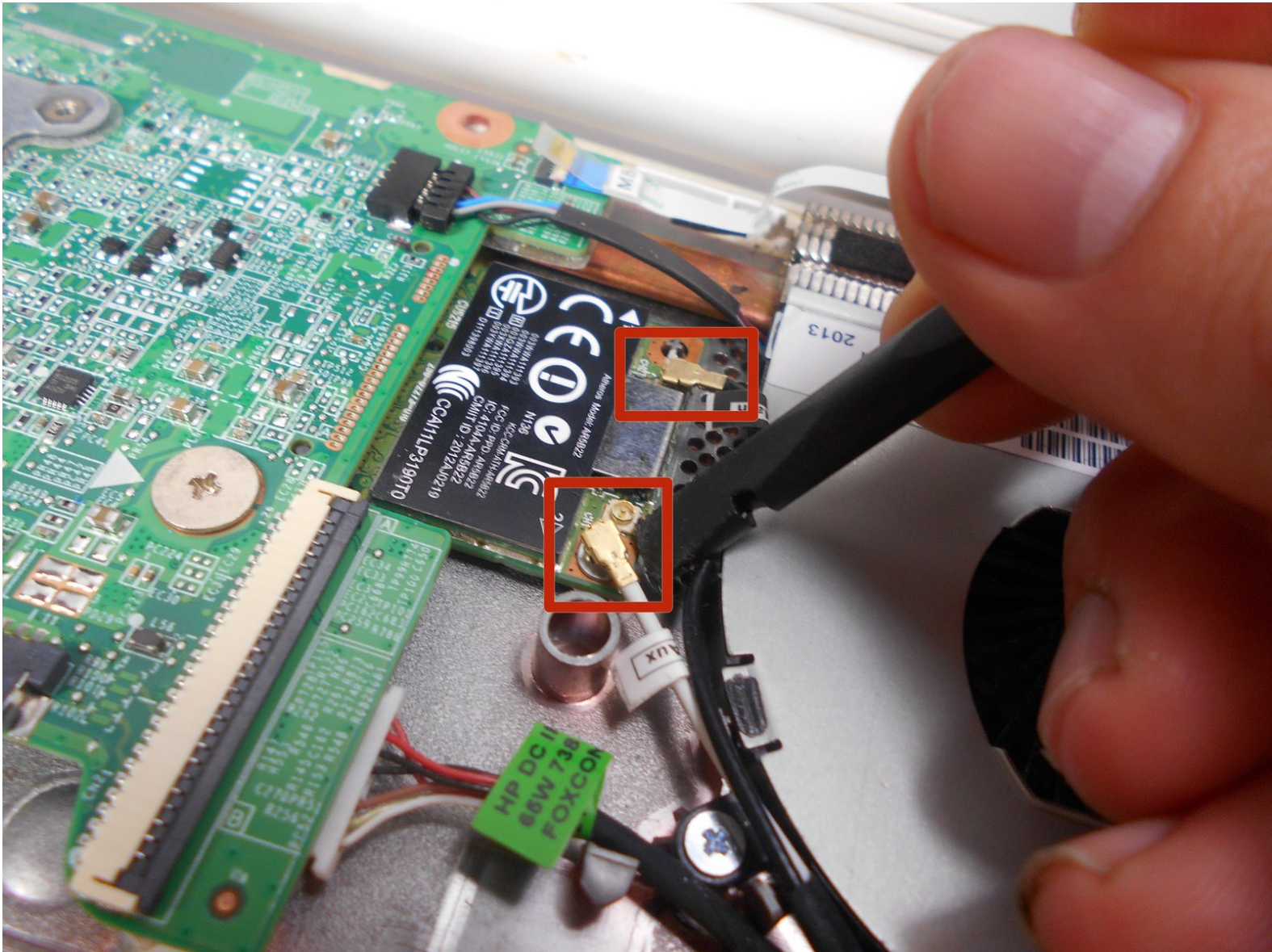




# HP Chromebook 14-Q010DX Bluetooth and Wireless Card Replacement

Guide to replacing your Chromebook's bluetooth and wireless card.

Written By: Kevin Piper



# INTRODUCTION

This guide will require removal of 1x3mm screws on the bluetooth and wireless card.



## TOOLS:

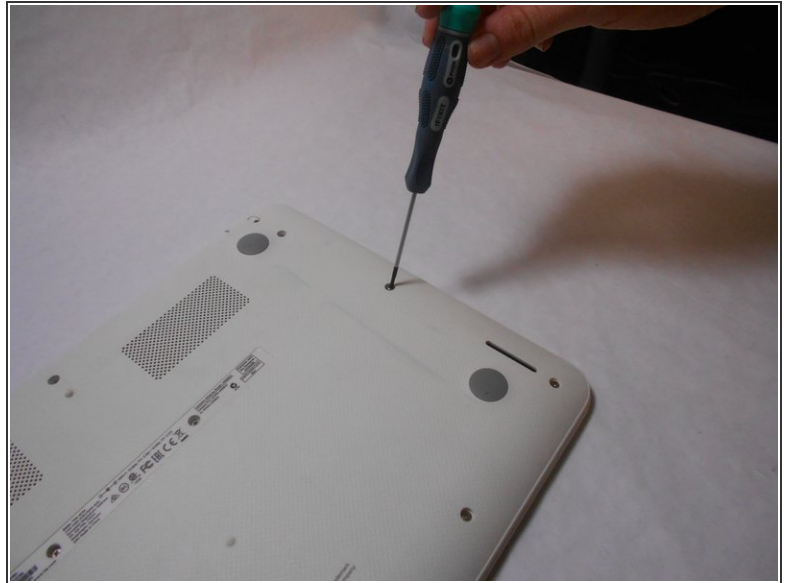
- [Phillips #00 Screwdriver](#) (1)
- [iFixit Opening Tools](#) (1)
- [Spudger](#) (1)



## PARTS:

- [HP Atheros AR9462 802.11a/b/g/n 2x2 Bluetooth 4.0 Combo Adapter spare part #676786-005](#) (1)

## Step 1 — Keyboard and Touchpad



- The yellow circle represents the rubber covering that protects the screw. And the red circle represents the screws.
- Flip the laptop such that the base of the laptop should face you. Remove the rubber covering with help of any sharp pointed object and then unscrew the screw.

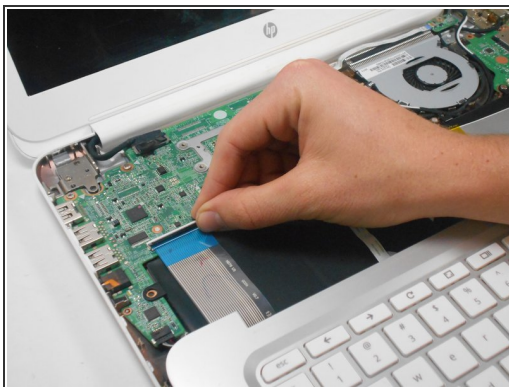
## Step 2



- Using a plastic opening tool or the spudger to separate the keyboard from the frame of the laptop.
- Gently lower the keyboard towards you to expose the wires attached beneath.

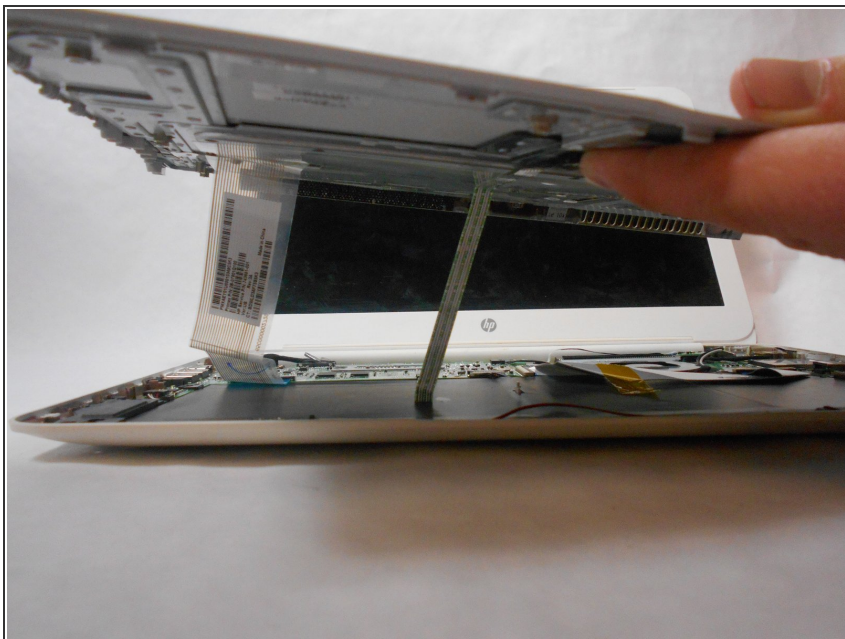


## Step 3



- Lift the black flap in the left black rectangle and pull the blue ribbon gently towards you until it is disconnected.
- Lift the white flap in the right black rectangle and pull the blue ribbon towards you until it is disconnected.

## Step 4



- Lift keyboard slightly and remove the strip gently so is not damaging any parts . The tape has no function other than to keep the wire tucked away.

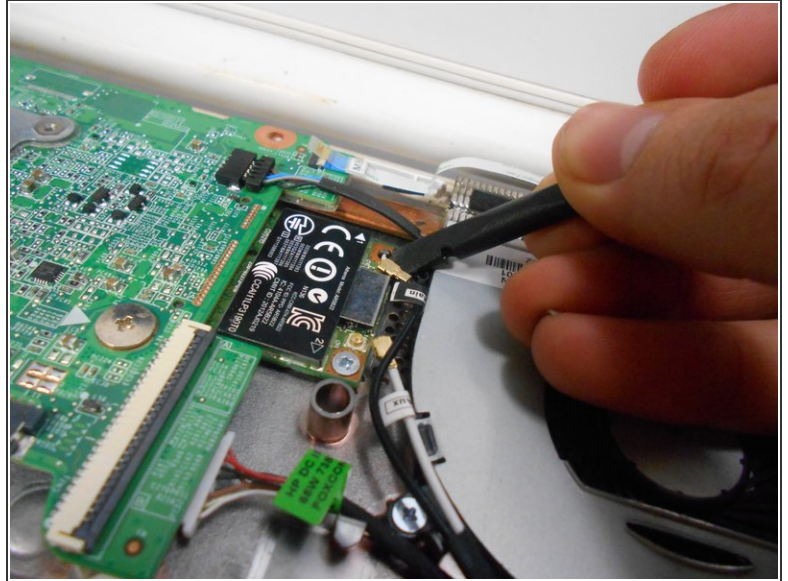
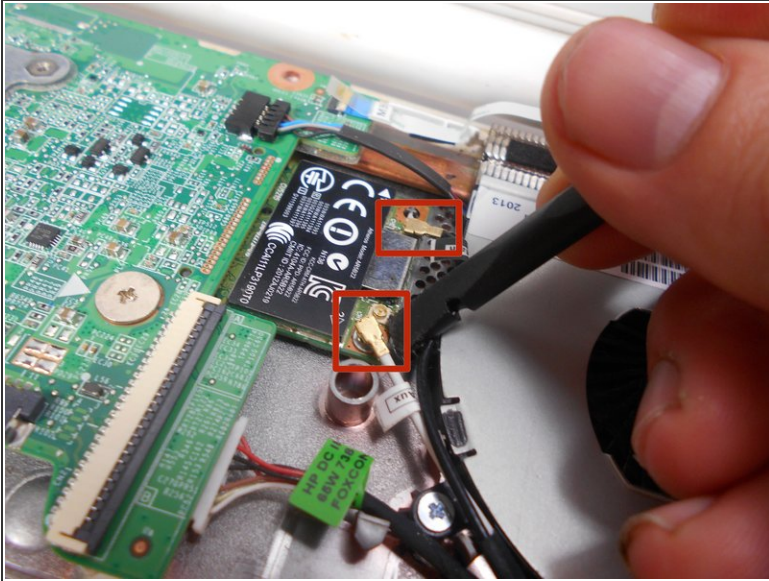
## Step 5



- Keyboard is now detached from the laptop and can be placed to the side.



## Step 6 — Bluetooth and Wireless Card



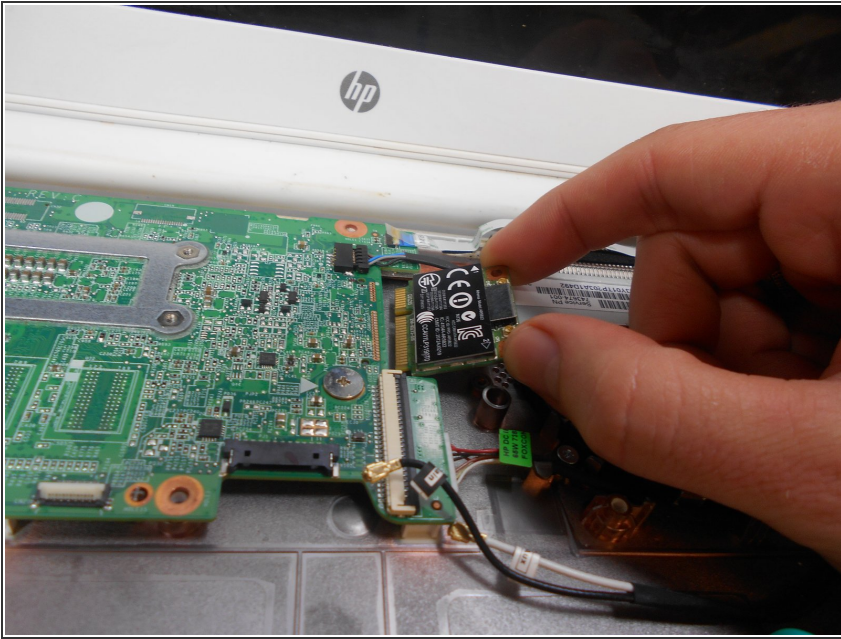
- Using a spudger, remove the white and black cables from the card as indicated by the red circles in the pictures.

## Step 7



- Remove screw from card.

## Step 8



- Gently remove card at the angle it is resting at.

To reassemble your device, follow these instructions in reverse order.