



# HP Chromebook 14-Q010DX Hard drive Replacement

A guide to replacing your Chromebook's hard drive.

Written By: Kevin Piper



# INTRODUCTION

This guide will require removal of 1x3mm screws.



## TOOLS:

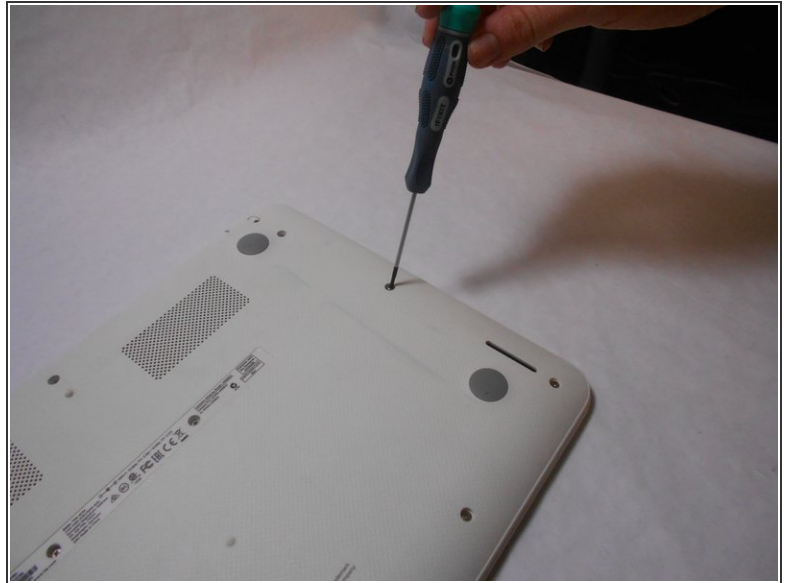
- [Phillips #00 Screwdriver](#) (1)
- [iFixit Opening Tools](#) (1)
- [Spudger](#) (1)



## PARTS:

- [HP Chromebook 14-Q010DX Solid-state drive 32GB](#) (1)  
*ONLY PURCHASE 1 PART. EITHER THE 32GB OR THE 16 GB.*
- [HP Chromebook 14-Q010DX Solid-state drive 16GB](#) (1)

## Step 1 — Keyboard and Touchpad



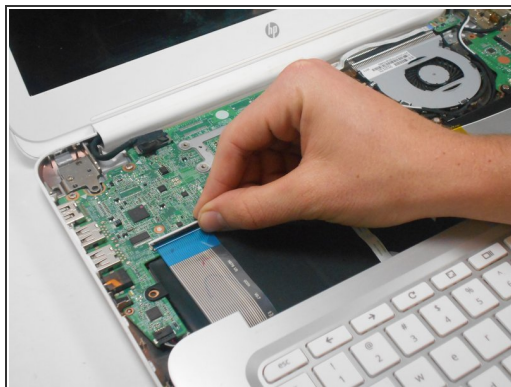
- The yellow circle represents the rubber covering that protects the screw. And the red circle represents the screws.
- Flip the laptop such that the base of the laptop should face you. Remove the rubber covering with help of any sharp pointed object and then unscrew the screw.

## Step 2



- Using a plastic opening tool or the spudger to separate the keyboard from the frame of the laptop.
- Gently lower the keyboard towards you to expose the wires attached beneath.

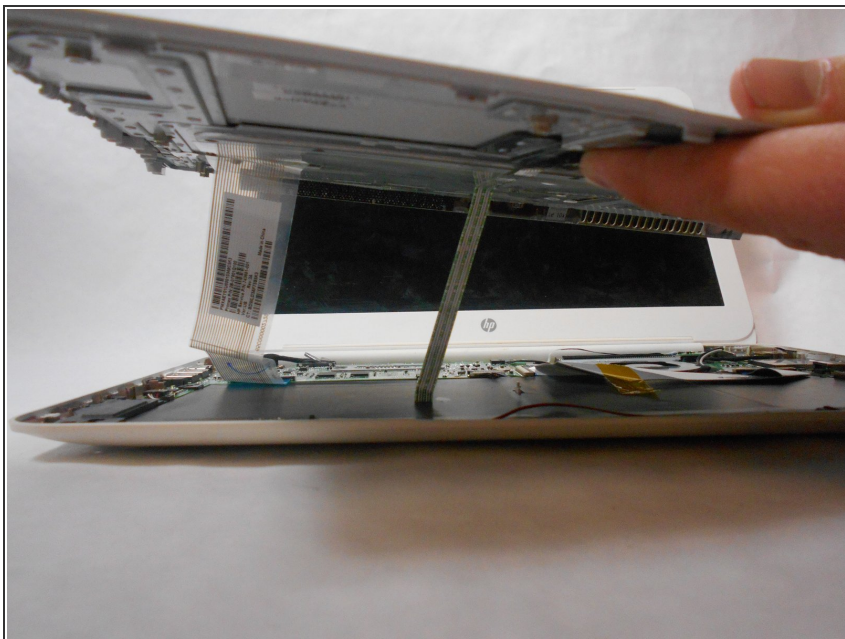
## Step 3



- Lift the black flap in the left black rectangle and pull the blue ribbon gently towards you until it is disconnected.
- Lift the white flap in the right black rectangle and pull the blue ribbon towards you until it is disconnected.



## Step 4



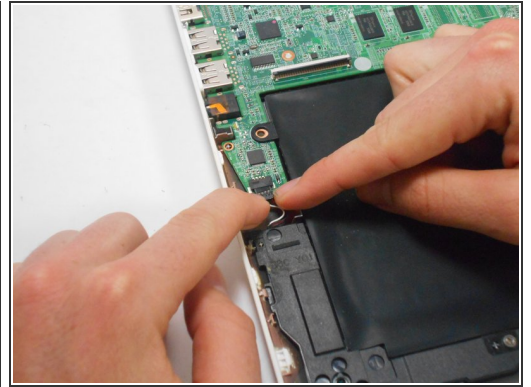
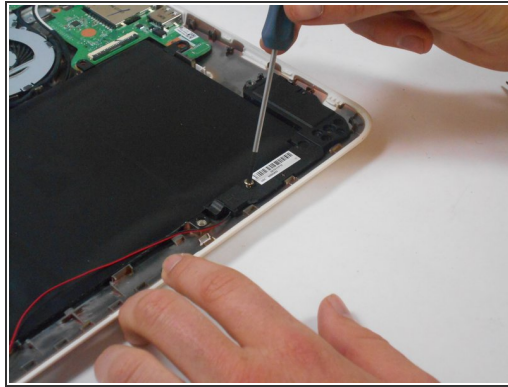
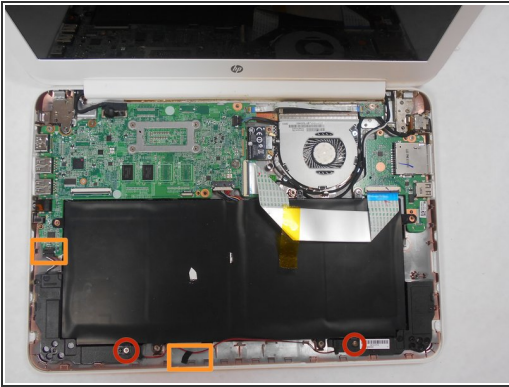
- Lift keyboard slightly and remove the strip gently so is not damaging any parts . The tape has no function other than to keep the wire tucked away.

## Step 5



- Keyboard is now detached from the laptop and can be placed to the side.

## Step 6 — Speaker



- Remove the two screws indicated by the red circles.
- Using fingers or the spudger, slide out the black connector indicated by the orange rectangle on the left.
- Undo the black tape indicated by the middle orange rectangle from the frame of the laptop

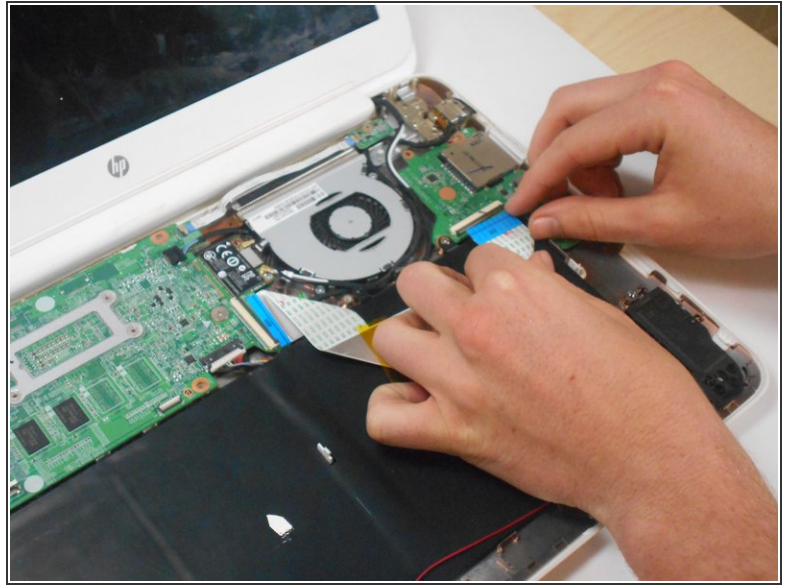
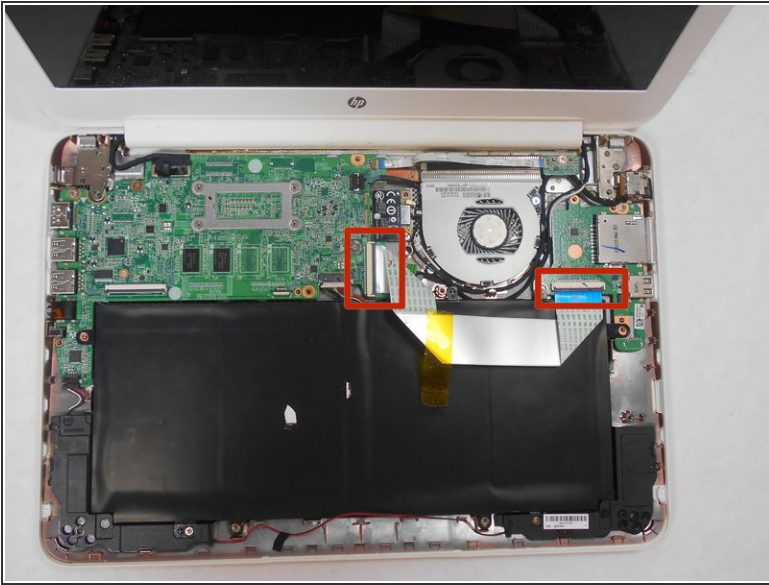
## Step 7



- Gently remove speakers.

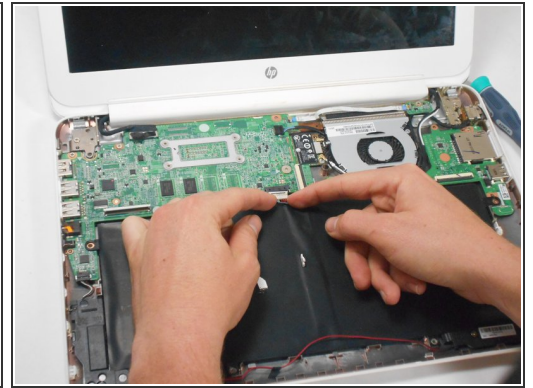


## Step 8 — Battery



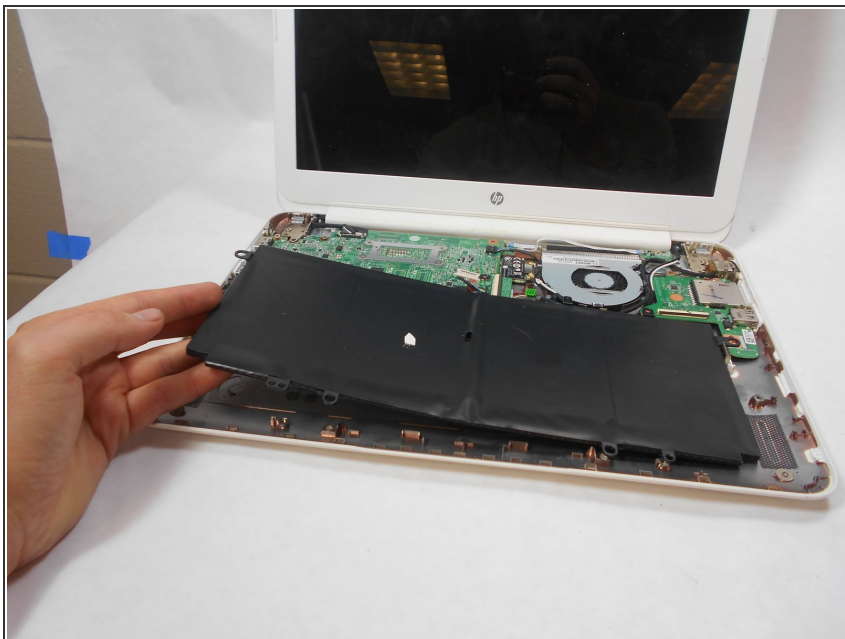
- For both parts indicated in the photo by the red rectangles, lift the black flaps and gently pull the strip out. Set the strip aside. Note the shape that this wire strip is resting at and that the blue tip of the strip goes into the right connector for reassembly.

## Step 9



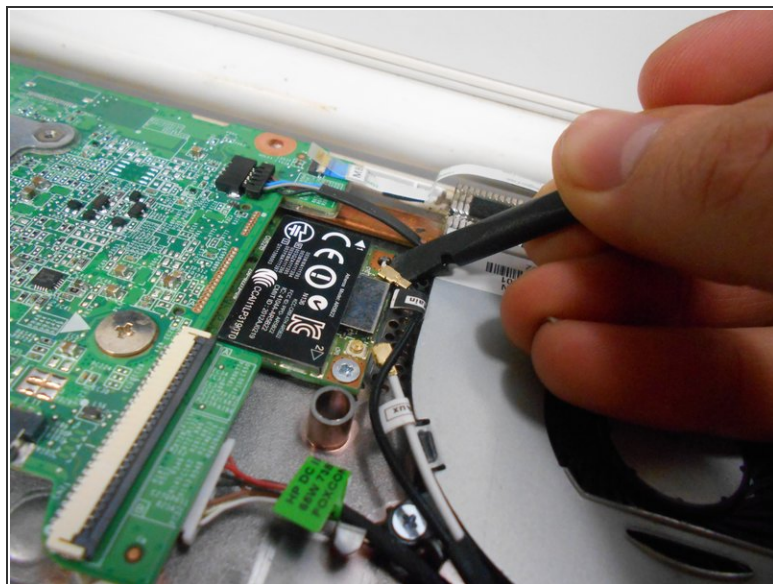
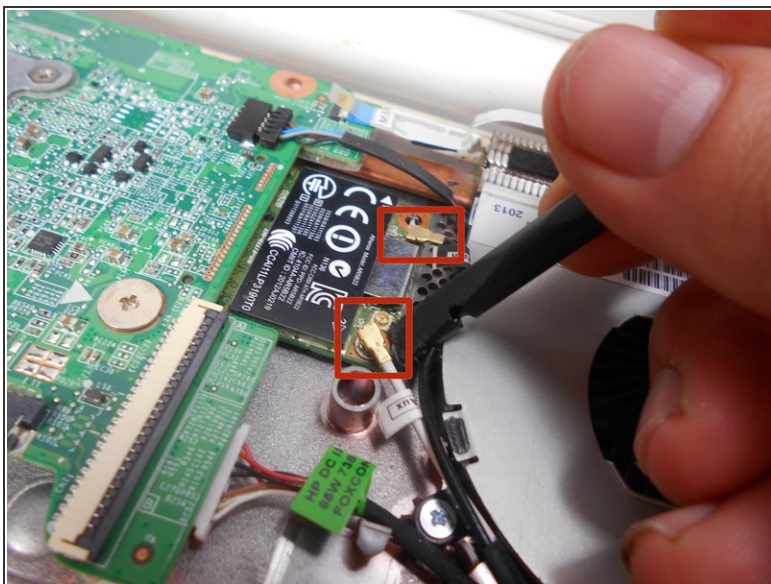
- Remove screw shown by red circle on the right.
- Use your fingers to pull the white tab out of the black slot above the battery, shown by the orange rectangle.

## Step 10



- Gently remove battery.

## Step 11 — Bluetooth and Wireless Card



- Using a spudger, remove the white and black cables from the card as indicated by the red circles in the pictures.

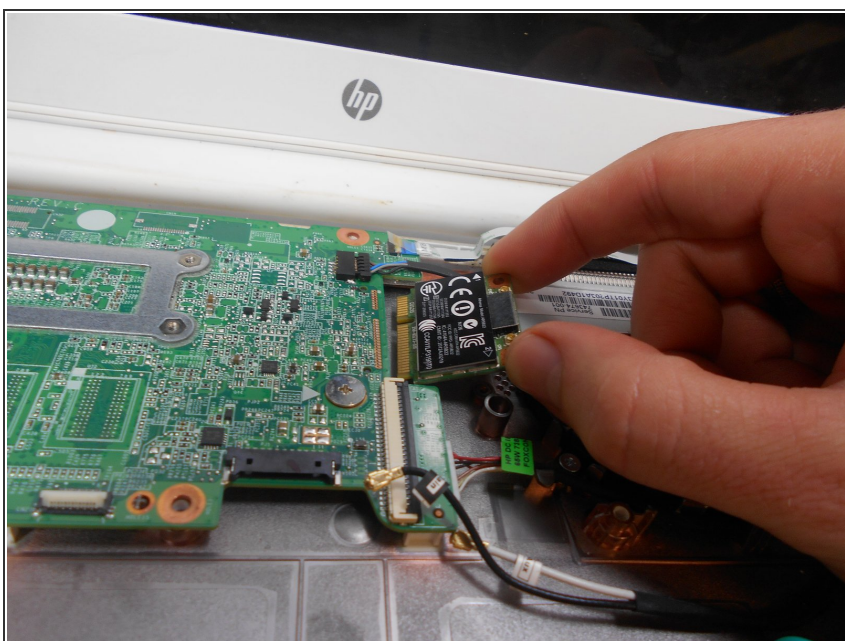


## Step 12



- Remove screw from card.

## Step 13



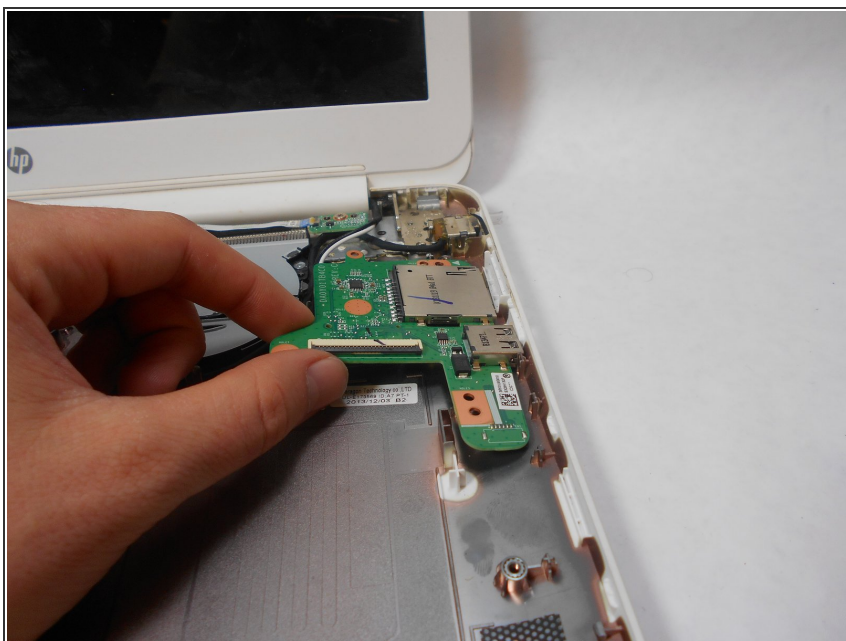
- Gently remove card at the angle it is resting at.

## Step 14 — USB/SD card



- Remove screw indicated by the red circle at the top of the card port.

## Step 15



- Gently remove the USB/SD card port.

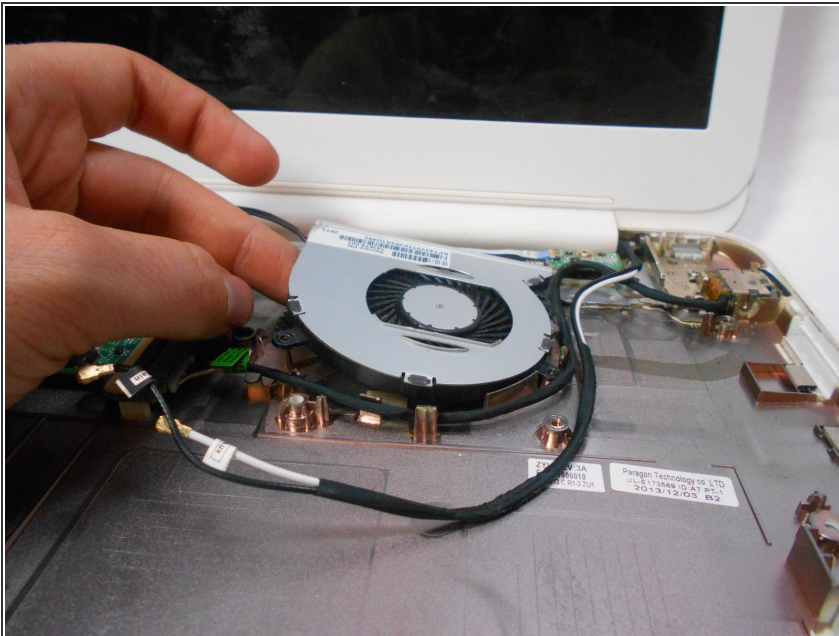


## Step 16 — Fan



- Remove the 3 screws around the fan, indicated by red circles in the picture.
- Using your fingers or the spudger, disconnect the cable connecting the fan to the motherboard. The connector is indicated by the orange rectangle in the picture.

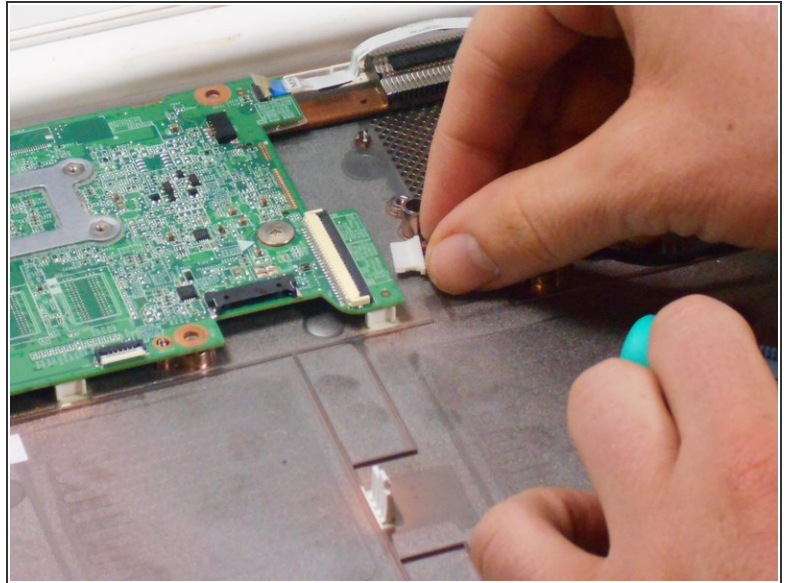
## Step 17



- Gently remove fan.

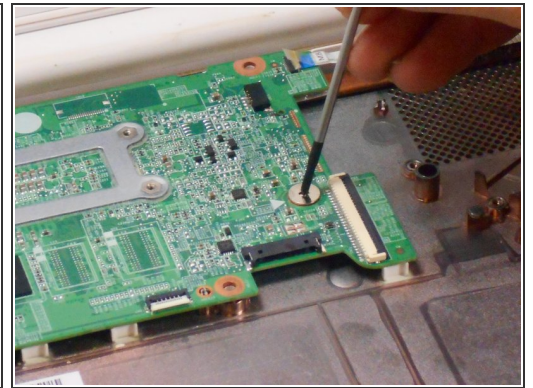
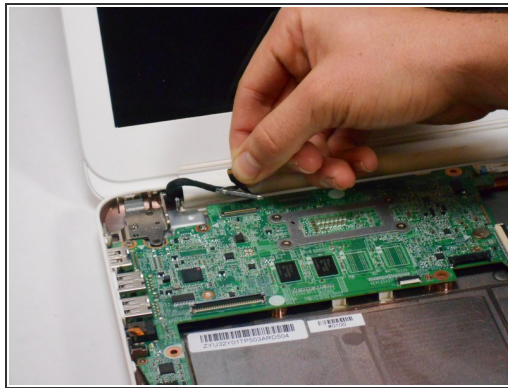
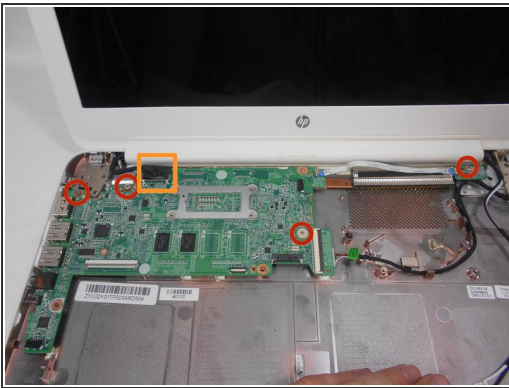


## Step 18 — Motherboard



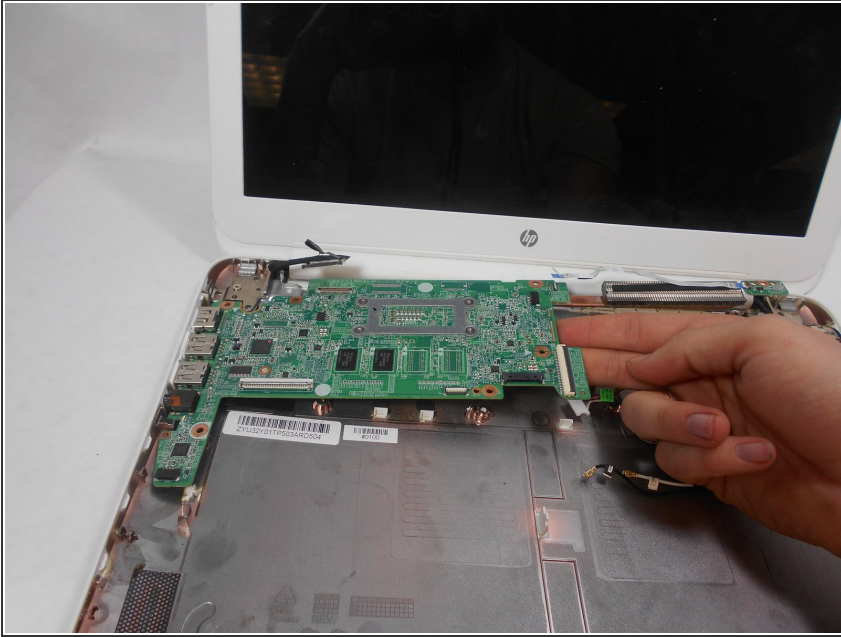
- Using your fingers or spudger, pull out the connector in the red rectangle.

## Step 19



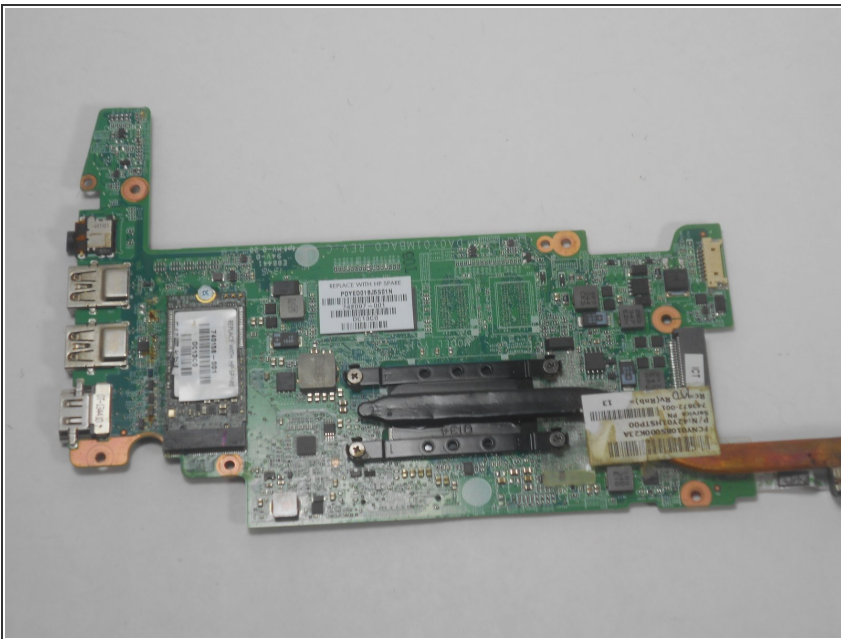
- Pull up on black strip in top left orange rectangle to remove the monitor cord.
- Remove the 1 screw on the right from the sensor board as indicated by the red circle.
- Remove the 3 screws from the mother board as indicated by the red circles.

## Step 20



- Gently remove motherboard.

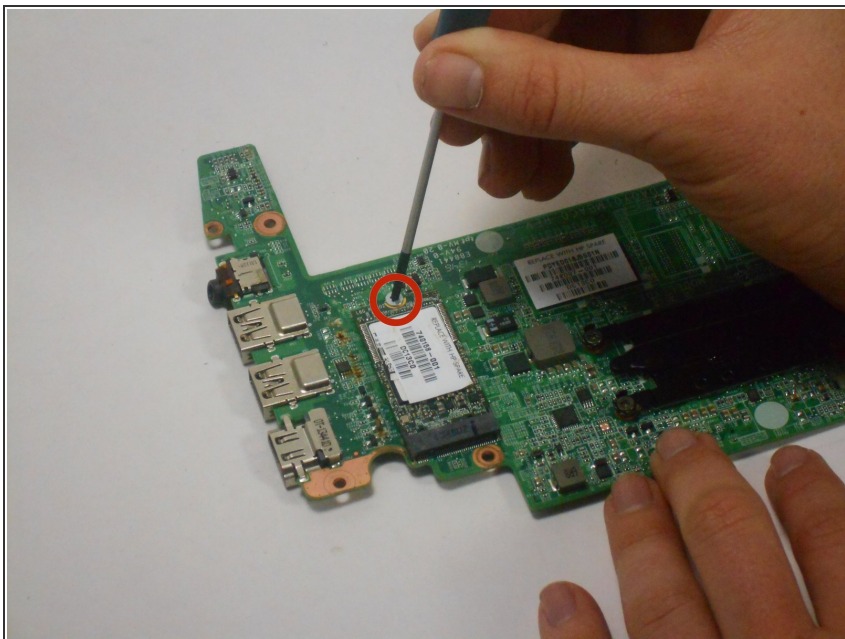
## Step 21 — Hard drive



- Flip motherboard over.

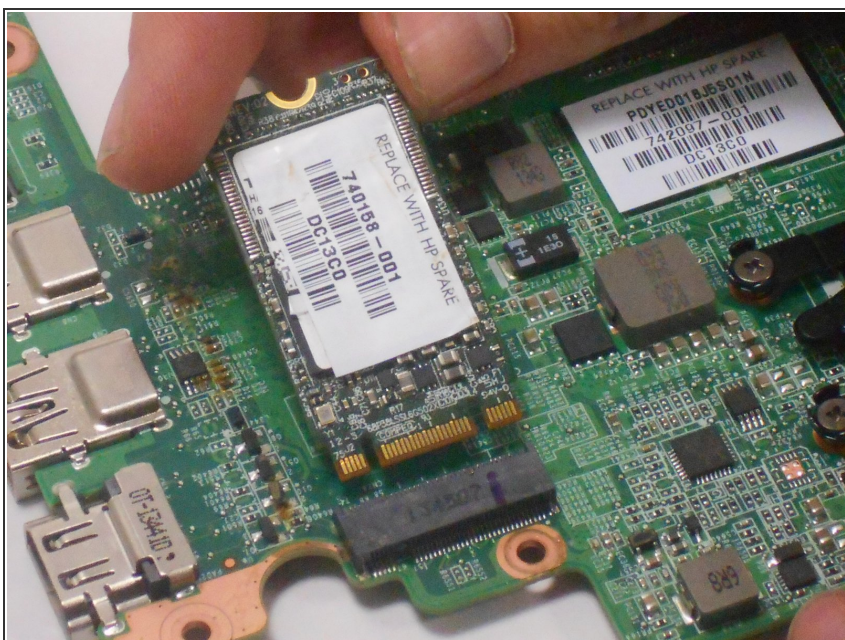


## Step 22



- Remove the screw indicated by the red circle.

## Step 23



- Remove the hard drive by pulling the device from the black slot.

To reassemble your device, follow these instructions in reverse order.