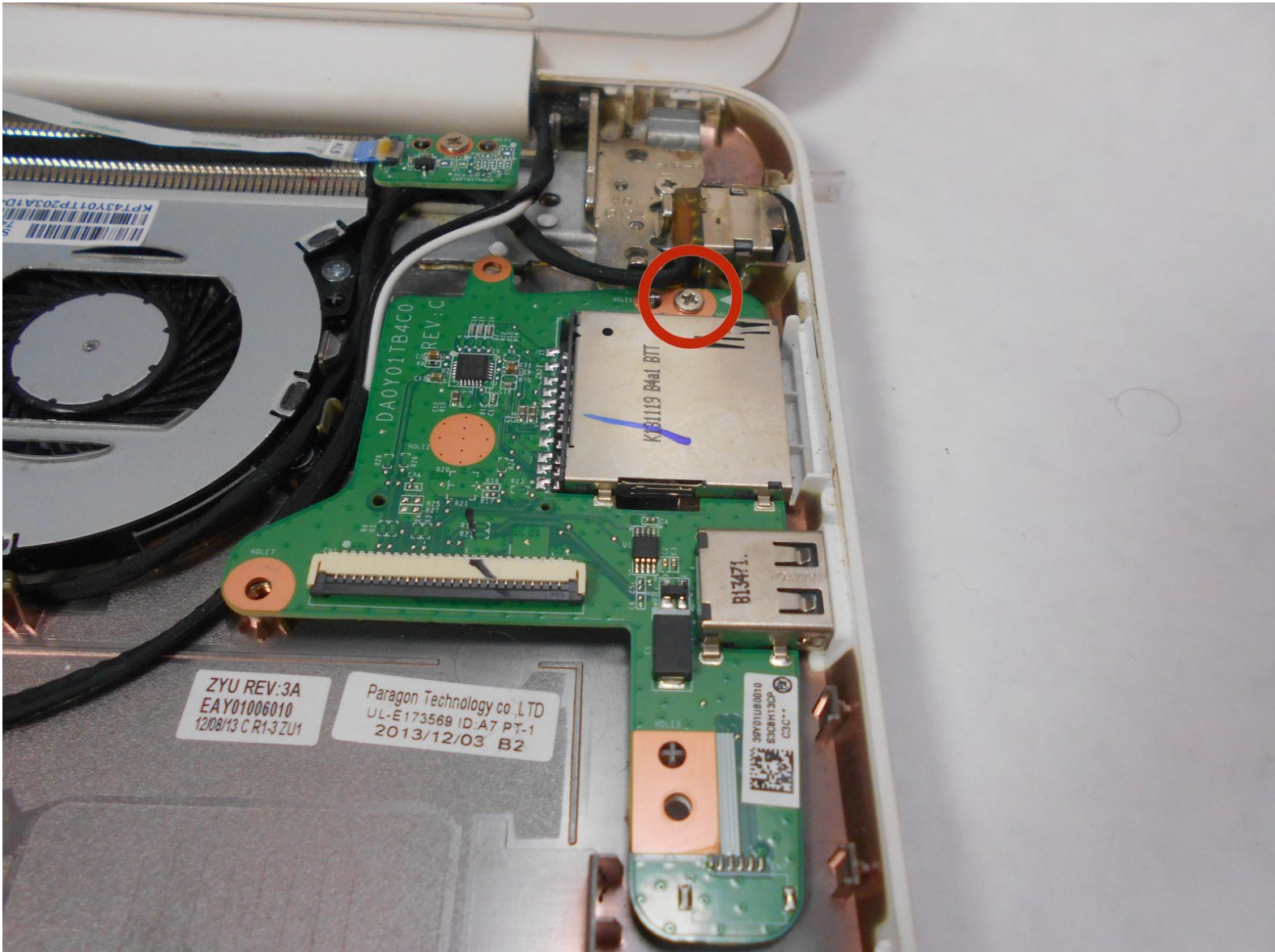




HP Chromebook 14-Q010DX USB/SD card Replacement

A guide to replace your Chromebook's USB/SD card.

Written By: Kevin Piper



INTRODUCTION

This guide requires the removal of 1x5mm screws on the USB/SD card assembly.



TOOLS:

- [Phillips #00 Screwdriver](#) (1)
- [iFixit Opening Tools](#) (1)
- [Spudger](#) (1)



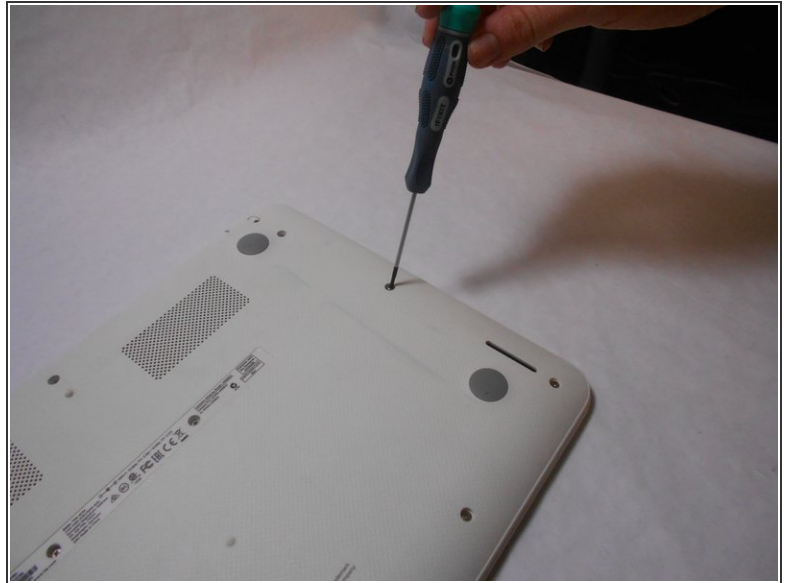
PARTS:

- [HP USB board spare part number #744781-001](#) (1)

YOU DO NOT NEED TO ORDER BOTH PARTS. You will either need to order spare part number 744781-001 if your computer model is equipped with WWAN capability or 740151-001 if it is not.

- [HP USB board spare part number #740151-001](#) (1)

Step 1 — Keyboard and Touchpad



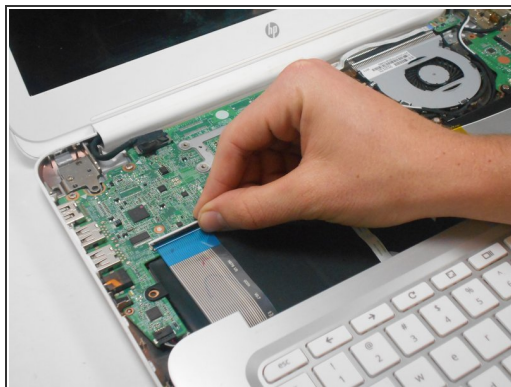
- The yellow circle represents the rubber covering that protects the screw. And the red circle represents the screws.
- Flip the laptop such that the base of the laptop should face you. Remove the rubber covering with help of any sharp pointed object and then unscrew the screw.

Step 2



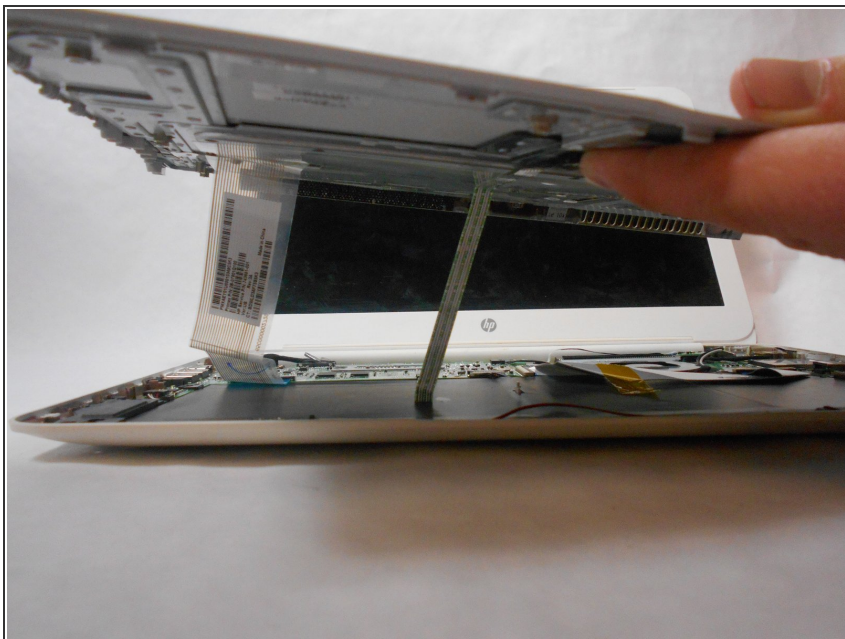
- Using a plastic opening tool or the spudger to separate the keyboard from the frame of the laptop.
- Gently lower the keyboard towards you to expose the wires attached beneath.

Step 3



- Lift the black flap in the left black rectangle and pull the blue ribbon gently towards you until it is disconnected.
- Lift the white flap in the right black rectangle and pull the blue ribbon towards you until it is disconnected.

Step 4



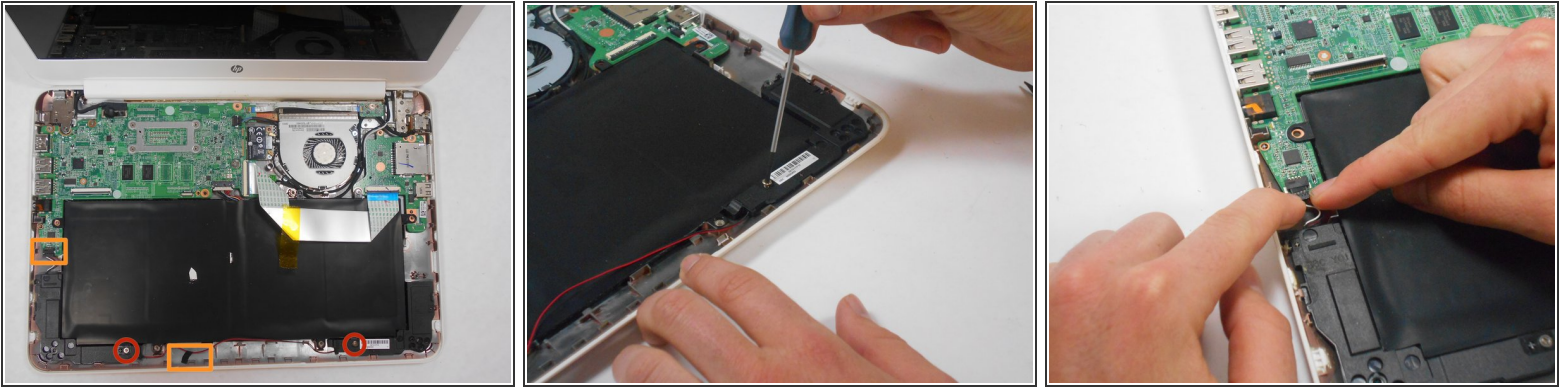
- Lift keyboard slightly and remove the strip gently so is not damaging any parts . The tape has no function other than to keep the wire tucked away.

Step 5



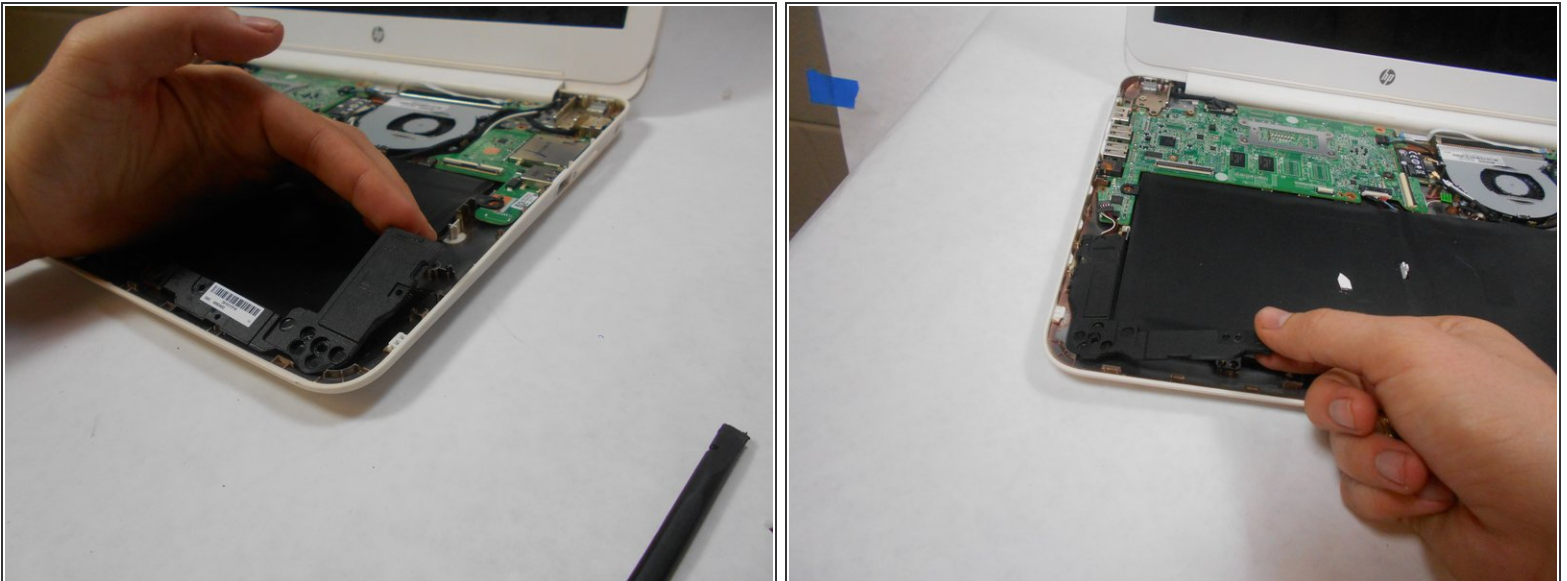
- Keyboard is now detached from the laptop and can be placed to the side.

Step 6 — Speaker



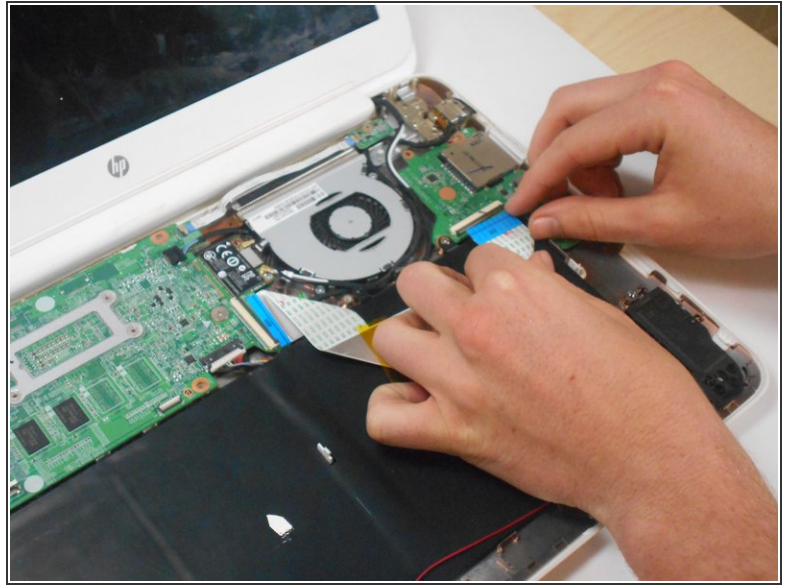
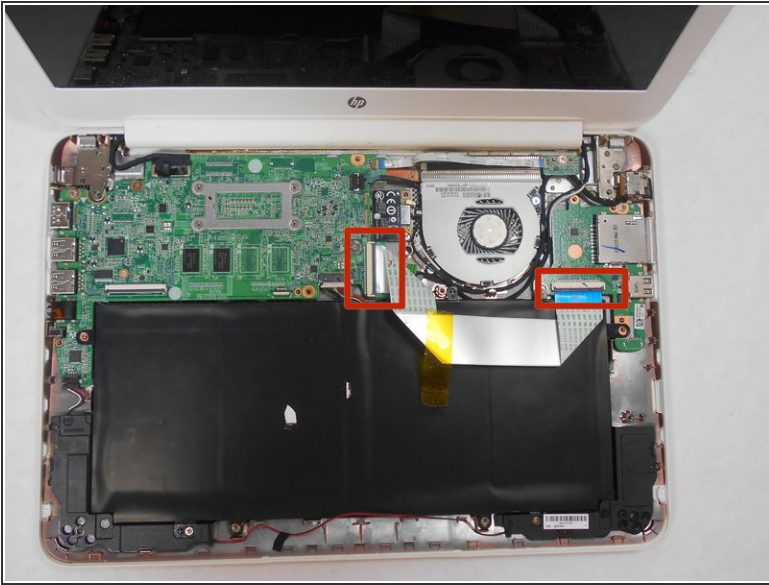
- Remove the two screws indicated by the red circles.
- Using fingers or the spudger, slide out the black connector indicated by the orange rectangle on the left.
- Undo the black tape indicated by the middle orange rectangle from the frame of the laptop

Step 7



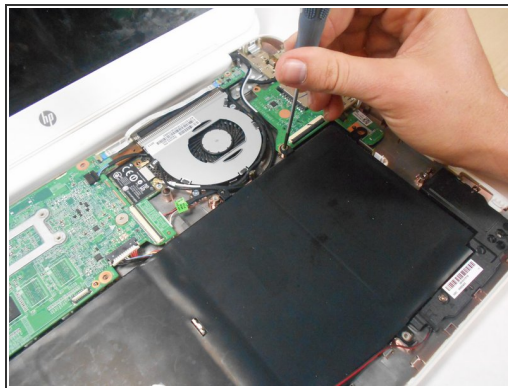
- Gently remove speakers.

Step 8 — Battery



- For both parts indicated in the photo by the red rectangles, lift the black flaps and gently pull the strip out. Set the strip aside. Note the shape that this wire strip is resting at and that the blue tip of the strip goes into the right connector for reassembly.

Step 9



- Remove screw shown by red circle on the right.
- Use your fingers to pull the white tab out of the black slot above the battery, shown by the orange rectangle.

Step 10



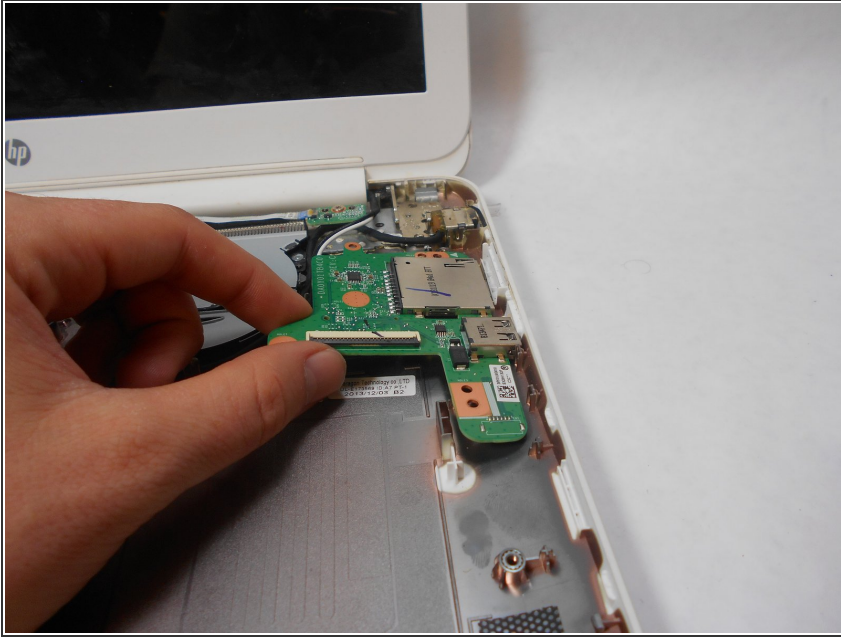
- Gently remove battery.

Step 11 — USB/SD card



- Remove screw indicated by the red circle at the top of the card port.

Step 12



- Gently remove the USB/SD card port.

To reassemble your device, follow these instructions in reverse order.