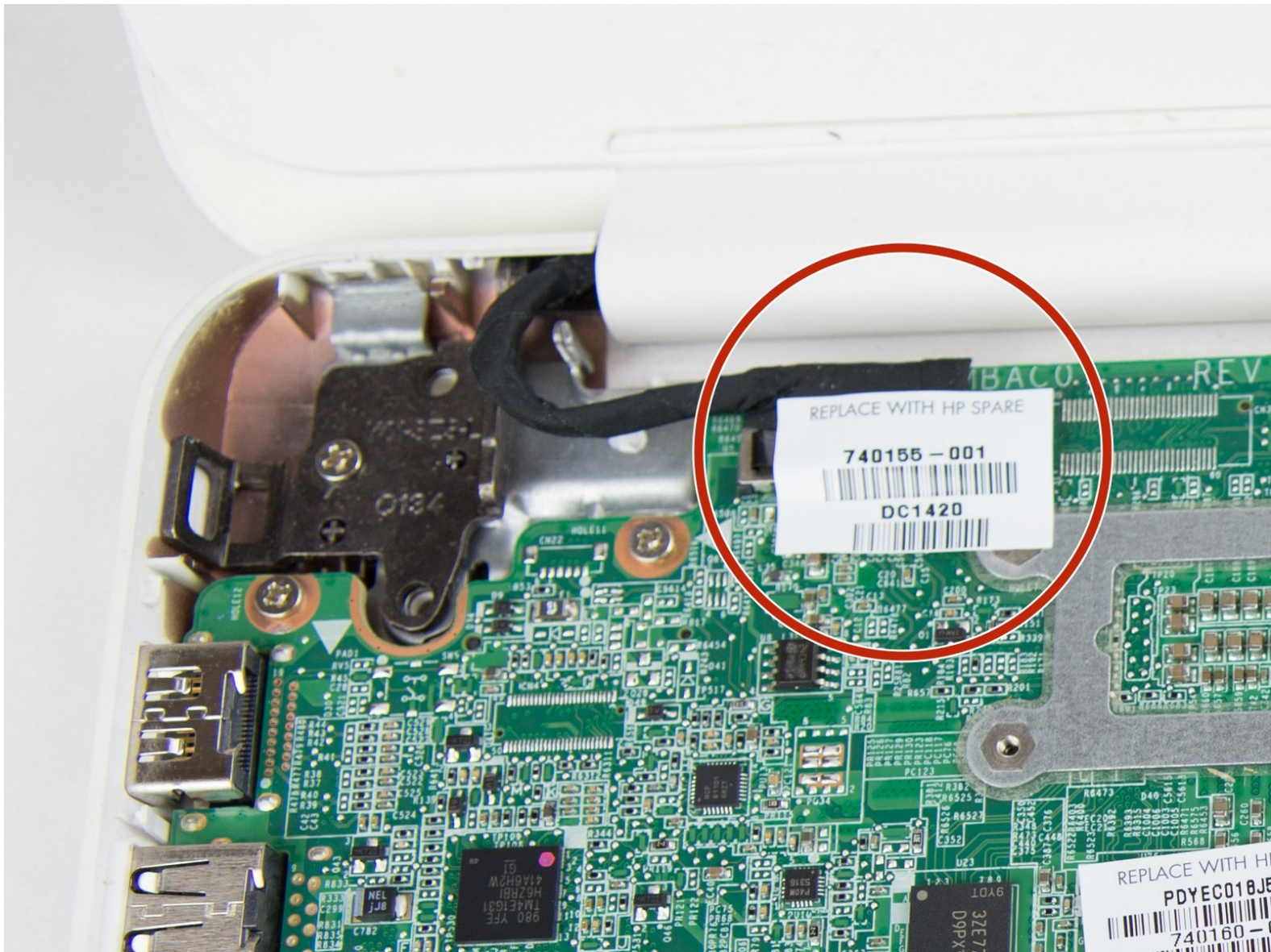




# HP Chromebook 14-Q070NR Display Replacement

Replace the screen to fix display issues on your HP Chromebook 14.

Written By: Richard Underwood



---

## INTRODUCTION

When considering a screen replacement it is important to ensure that it is not a connection issue first. Once you determine that you have a tight fitting connection, if the display issues persist then you will need to replace the screen. Fortunately, this is a straight forward process with no special requirements or hazards.



### TOOLS:

- [Phillips #1 Screwdriver](#) (1)
  - [Spudger](#) (1)
  - [iFixit Opening Tools](#) (1)
-

## Step 1 — Keyboard



- i** At this point, the white caps that hide the top-most screws marked with red circles have been removed.
- Using the Phillips #1 screwdriver, remove the (10) ten screws from the bottom of the device.
- After removing the white caps covering the screws, use the Phillips #1 screwdriver to remove the (3) three screws indicated with red circles.

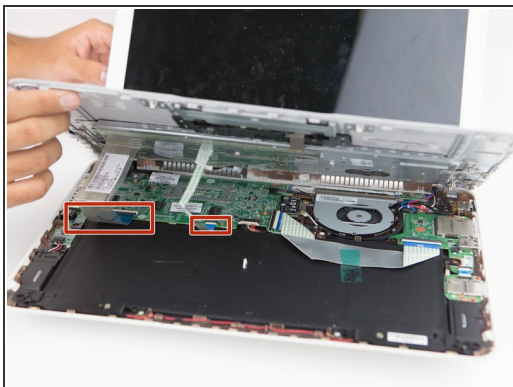
## Step 2



- Open the laptop and place it upright. Remove the keyboard from the device using a plastic spudger or opening tool.

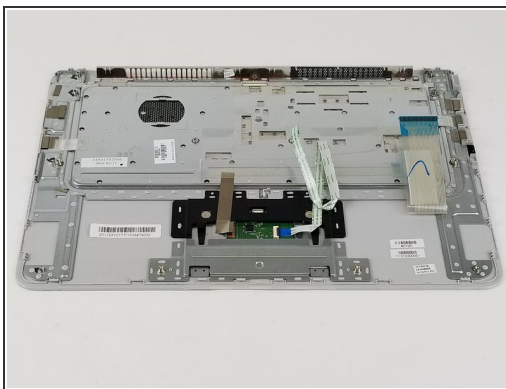
**⚠** Carefully remove as there are ribbons attached to the keyboard that is connected to the components inside.
- Gently lift the keyboard just enough to expose the ribbons.

## Step 3



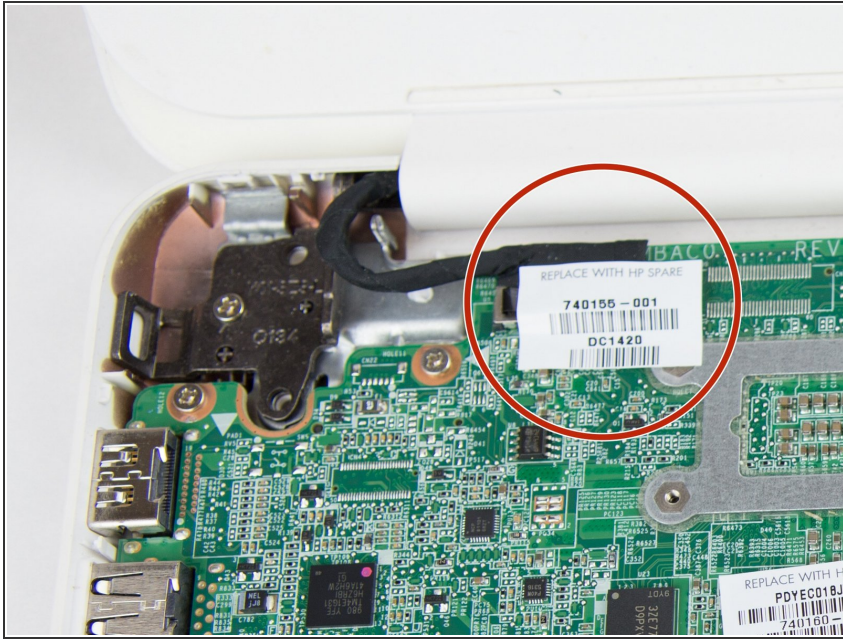
- Hold the keyboard up to remove the ribbons from the circuit board.
- To remove each individual ribbon, grab the blue portion of each ribbon and pull it towards your direction until it is fully detached.

## Step 4



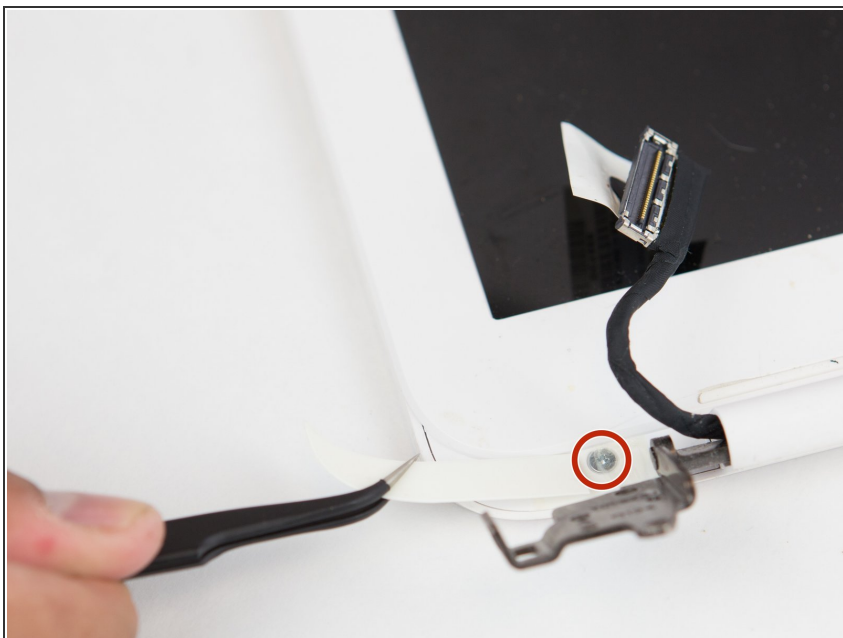
- Once the ribbons are detached, remove the keyboard from the device.

## Step 5 — Display



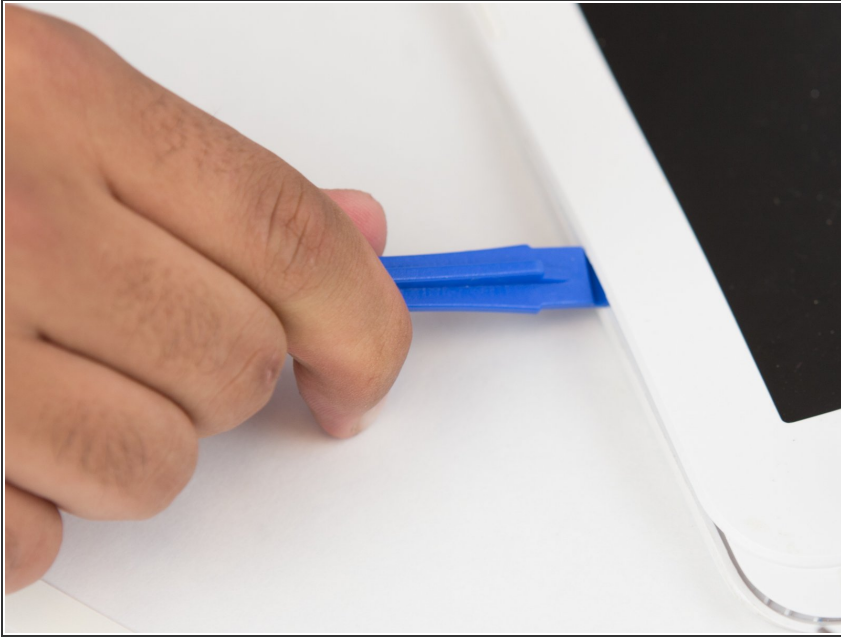
- Unplug the cable located in the upper left corner of the device.

## Step 6



- Remove these tabs located at each of the bottom corners of the display.
- ❗ It is not necessary for the display to be completely removed from the device in order to complete this guide.
- Using the Phillips #1 screwdriver, remove the single screw located under each of the two tabs.

## Step 7



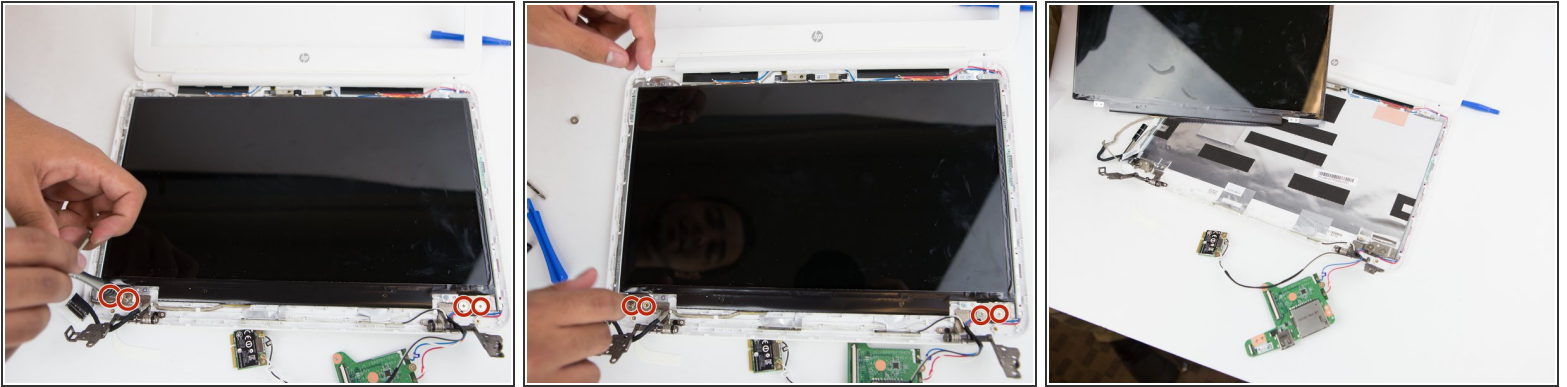
- Insert the plastic opening tool and work it around the entire frame of the display.

## Step 8



- As you work the plastic opening tool around the edge, remove the front frame of the device.

## Step 9



- Using the Phillips #1 screwdriver, remove the (4) four screws located at the bottom of the display.
- Once the screws are removed, lift the display out of the device.

To reassemble your device, follow these instructions in reverse order.