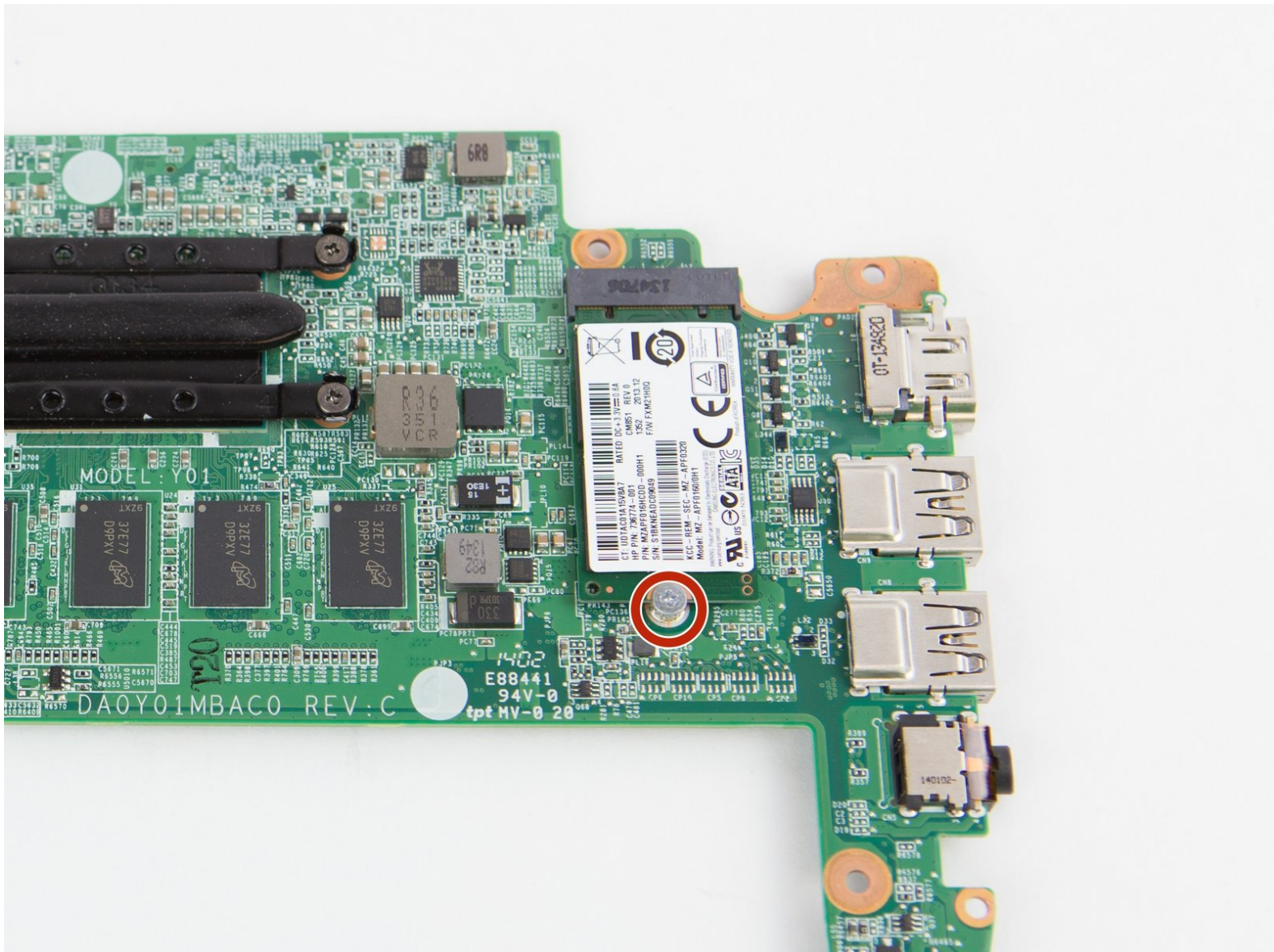




HP Chromebook 14-Q070NR Solid State Drive Replacement

Using this guide one will be able to replace their solid state drive.

Written By: Kevin Wong



INTRODUCTION

Before attempting this guide, you should have completed the prerequisite guides in order to gain access to the SSD. Use this guide to replace the SSD in your device.



TOOLS:

- [Phillips #1 Screwdriver](#) (1)
 - [iFixit Opening Tools](#) (1)
 - [Spudger](#) (1)
 - [Phillips #1 Screwdriver](#) (1)
 - [Phillips #0 Screwdriver](#) (1)
 - [Magnetic Project Mat](#) (1)
-

Step 1 — Keyboard



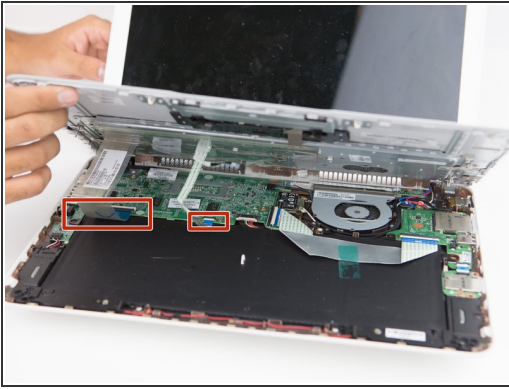
- i** At this point, the white caps that hide the top-most screws marked with red circles have been removed.
- Using the Phillips #1 screwdriver, remove the (10) ten screws from the bottom of the device.
- After removing the white caps covering the screws, use the Phillips #1 screwdriver to remove the (3) three screws indicated with red circles.

Step 2



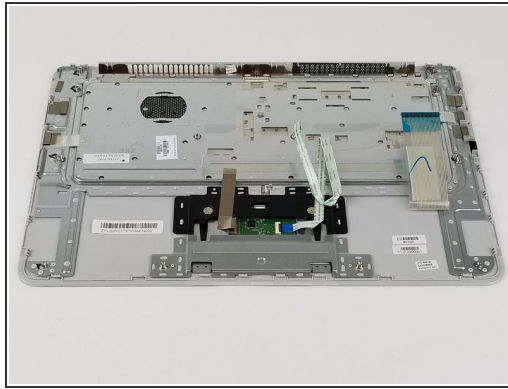
- Open the laptop and place it upright. Remove the keyboard from the device using a plastic spudger or opening tool.
- ⚠** Carefully remove as there are ribbons attached to the keyboard that is connected to the components inside.
- Gently lift the keyboard just enough to expose the ribbons.

Step 3



- Hold the keyboard up to remove the ribbons from the circuit board.
- To remove each individual ribbon, grab the blue portion of each ribbon and pull it towards your direction until it is fully detached.

Step 4



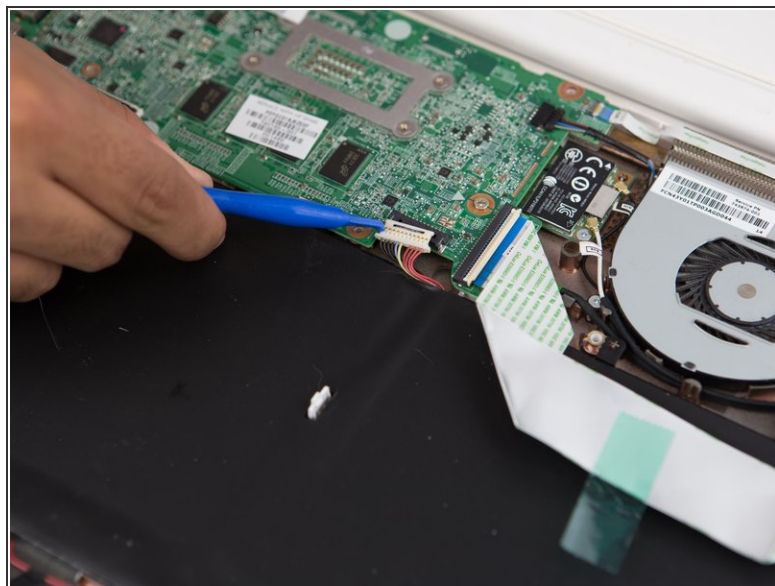
- Once the ribbons are detached, remove the keyboard from the device.

Step 5 — Battery



- Using the Phillips #0 screwdriver, remove the (2) two screws at the bottom of the device.
- ❗ Once removed, separate the screws from previous ones. They are different!

Step 6



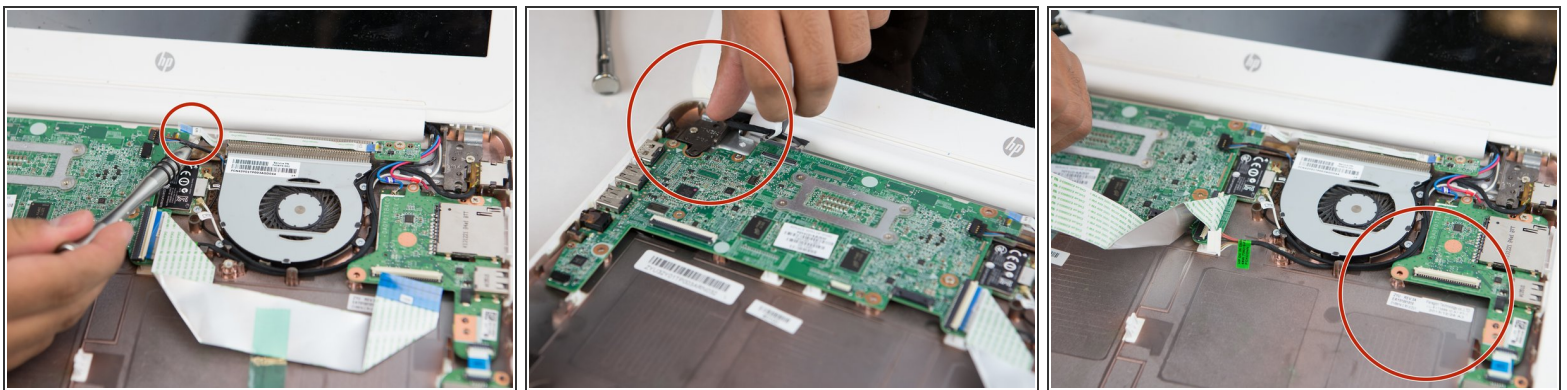
- Remove the taped flat wire from the top of the battery.
- Carefully pull away the connector from the top of the battery to the motherboard.

Step 7



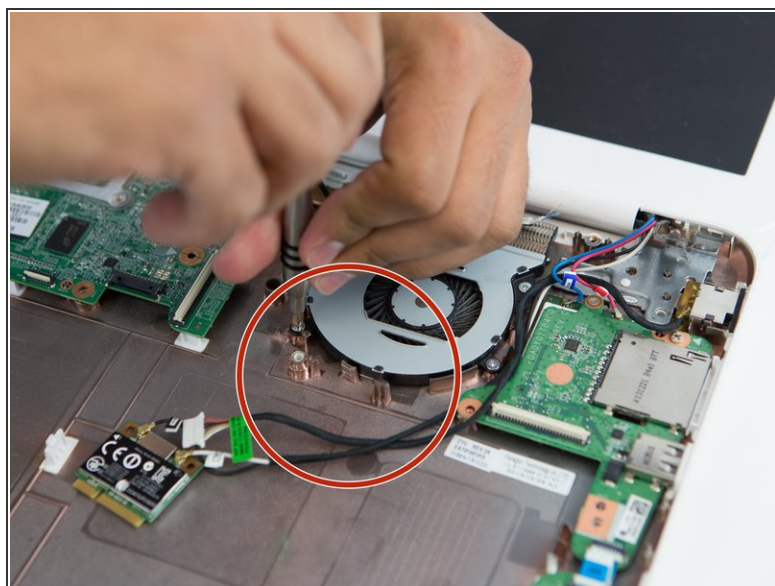
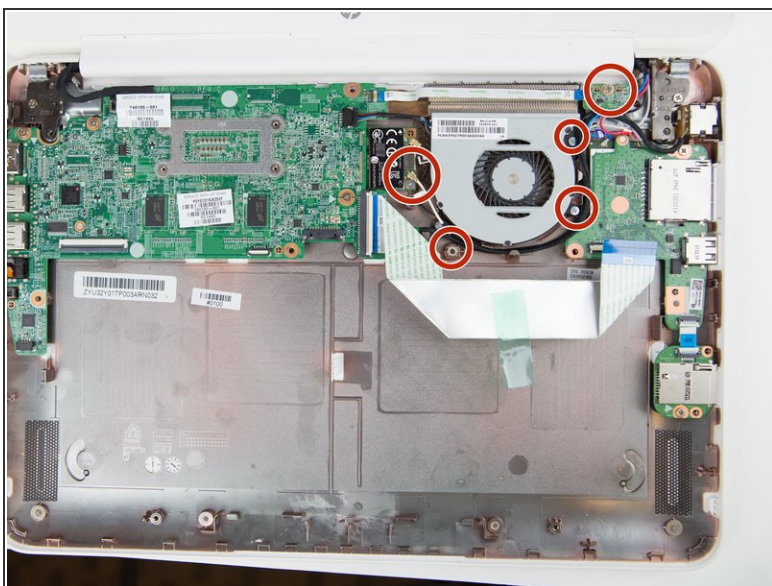
- Carefully lift the battery and remove it from the device.

Step 8 — Motherboard



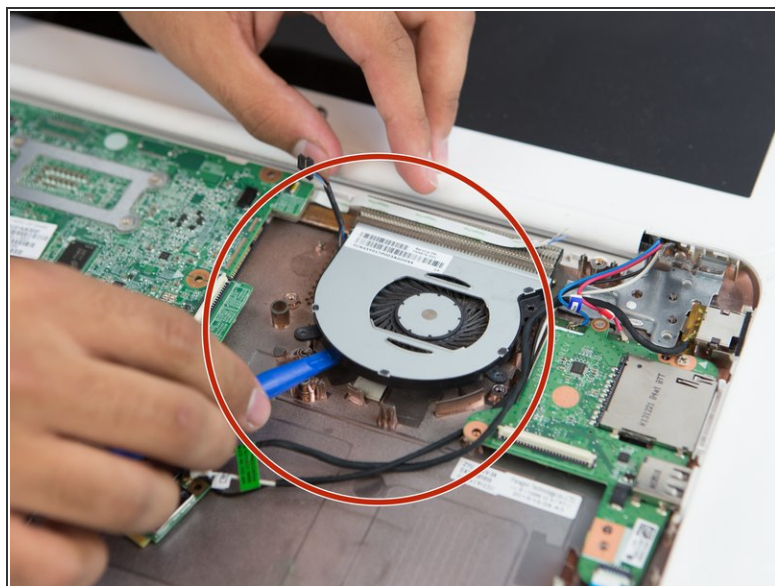
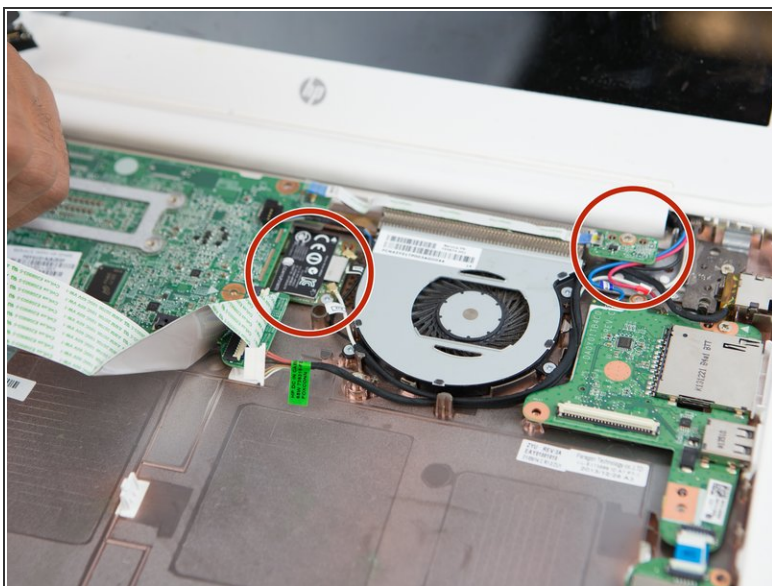
- Carefully remove the (3) three plastic strips attached to the motherboard.

Step 9



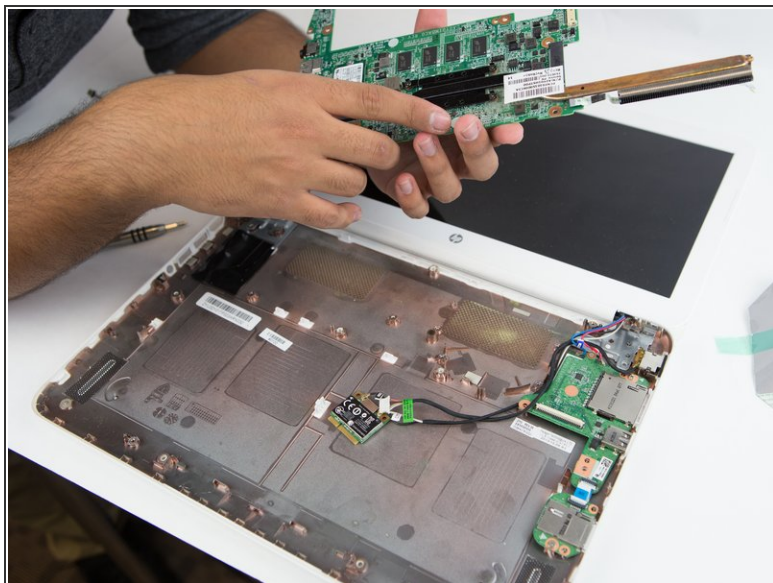
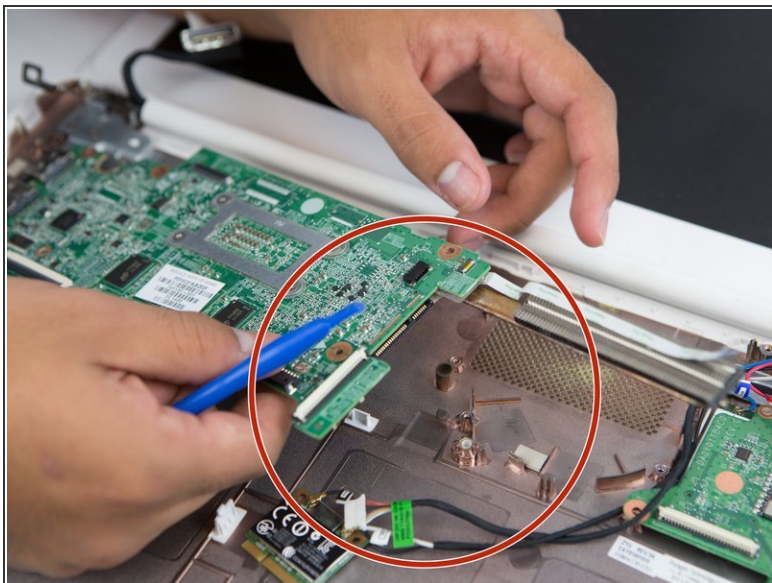
- Use the Phillips #1 screwdriver to remove the (5) five screws.

Step 10



- Use the blue plastic opening tool to disconnect the connectors. Remove the fan from the motherboard.

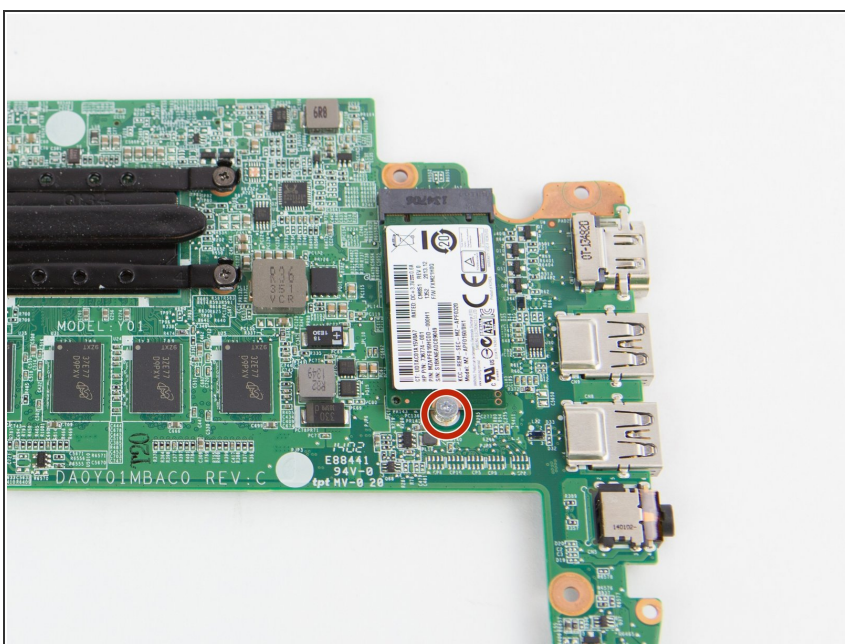
Step 11



- Gently lift while using the plastic opening tool to unhinge the motherboard from the computer in an upward pattern.

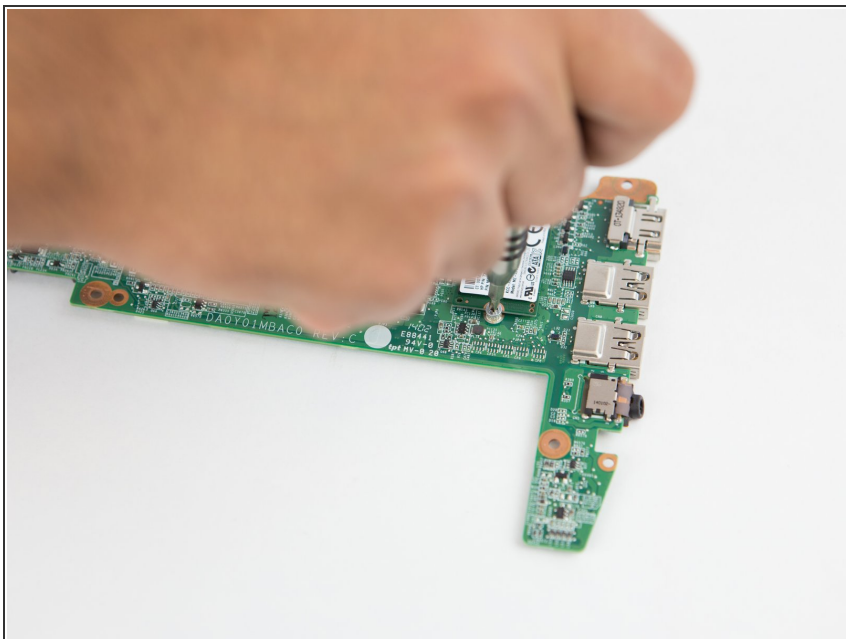
⚠ Be very careful not to detach the motherboard too quickly or forcefully since you could damage or break it.

Step 12 — Solid State Drive



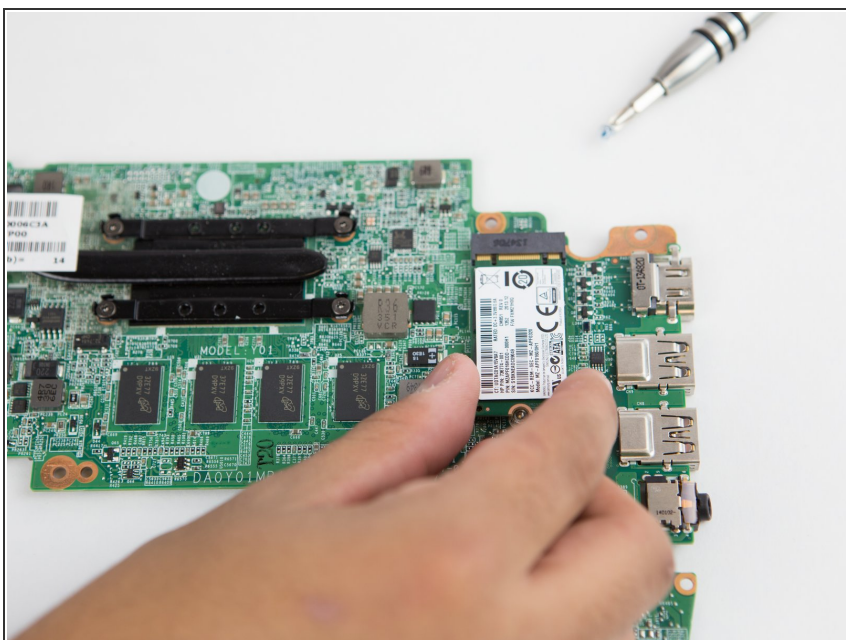
- Locate the retaining screw for the SSD.

Step 13



- Remove screw using a phillips head screw driver.

Step 14



- Gently pull outwards to remove the solid state drive.
- ⚠ Do not apply any upward force to avoid breaking any other components.

To reassemble your device, follow these instructions in reverse order.