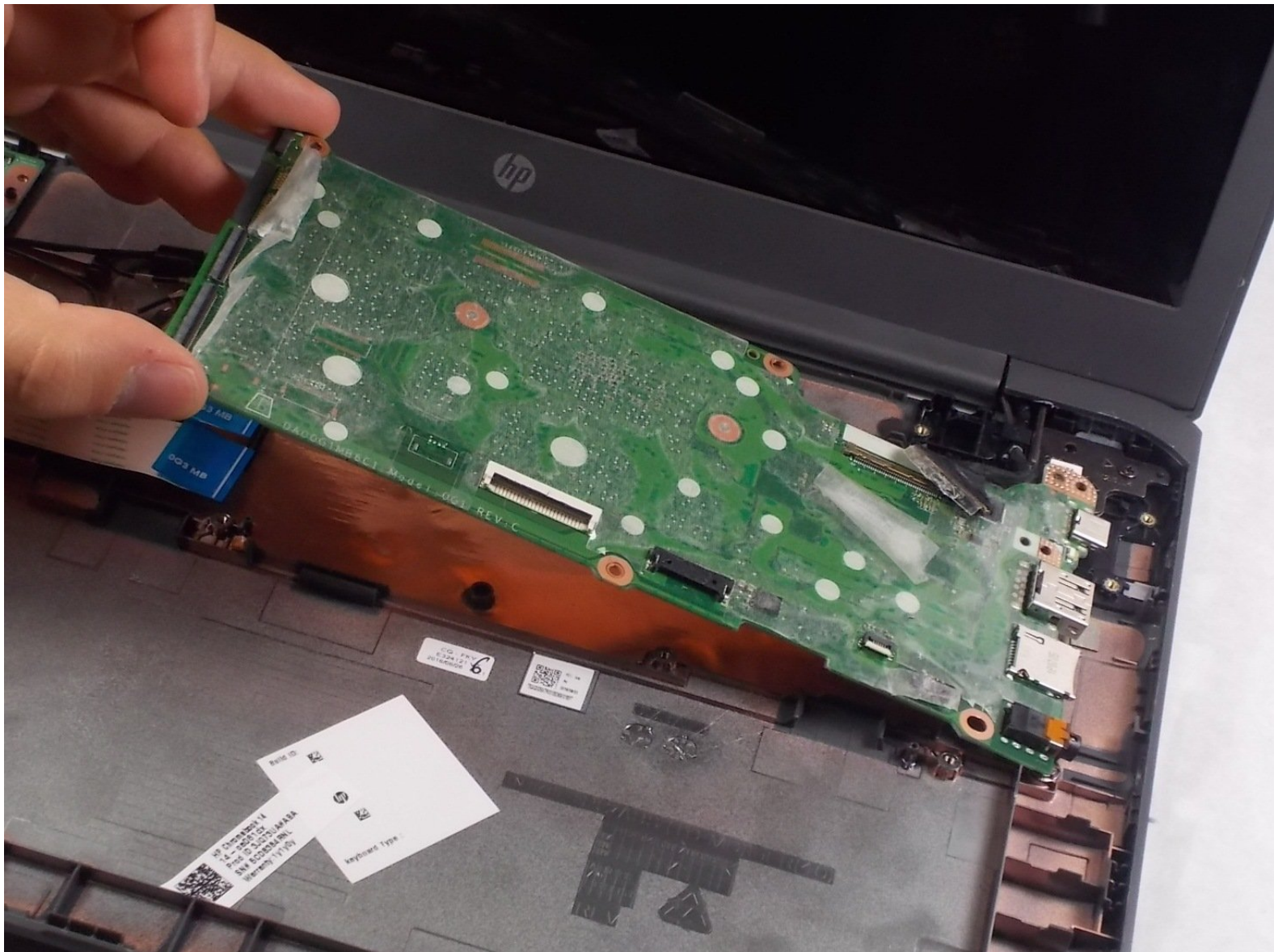




# HP Chromebook 14-ca061dx Motherboard Replacement

How to replace the motherboard in a HP Chromebook 14-ca061dx. This piece contains the RAM, CPU, and Storage.

Written By: Jean Arevalo



This document was generated on 2020-03-04 03:01:21 PM (MST).

---

## INTRODUCTION

If you want to replace the RAM or CPU or the storage of the HP Chromebook 14-ca061dx or are in need of replacing those parts, you will need to replace the whole motherboard of the Chromebook since they are all combined to be part of it. You can follow this guide to replace the motherboard.



### TOOLS:

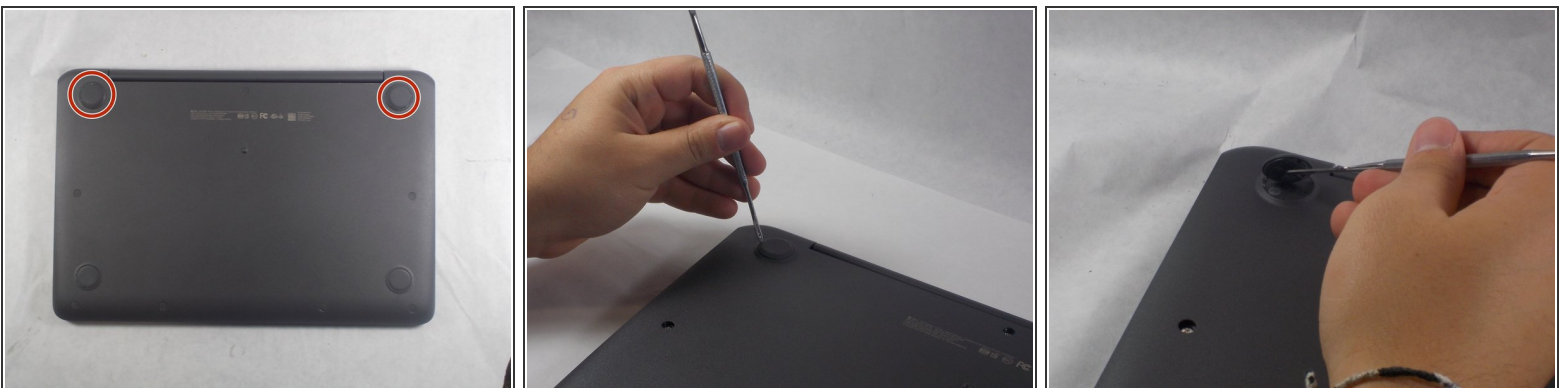
- [Phillips #1 Screwdriver](#) (1)
  - [Phillips #00 Screwdriver](#) (1)
  - [Tweezers](#) (1)
  - [Spudger](#) (1)
  - [iFixit Opening Tools](#) (1)
-

## Step 1 — Keyboard



- Flip the Chromebook to the underside with the hinge at the top.
- Remove the seven, small rubber stoppers using angled tweezers.

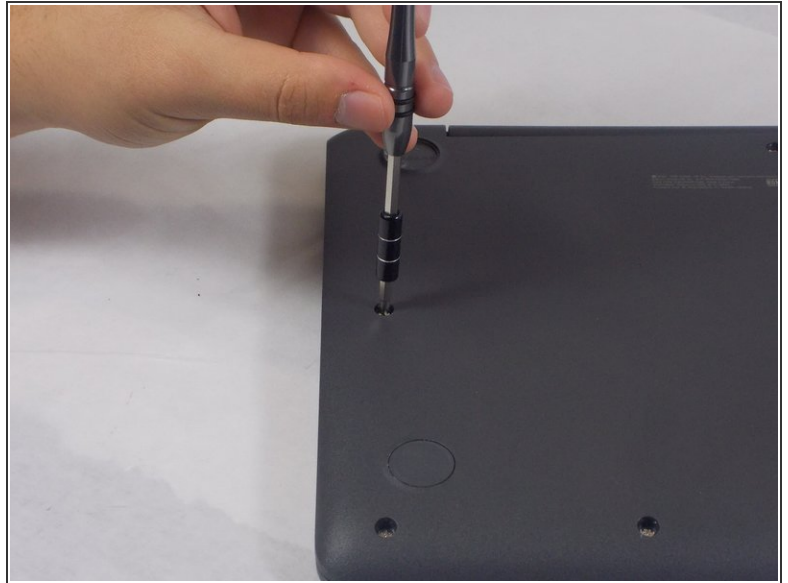
## Step 2



- Remove the two bigger rubber stoppers using a metal spudger.

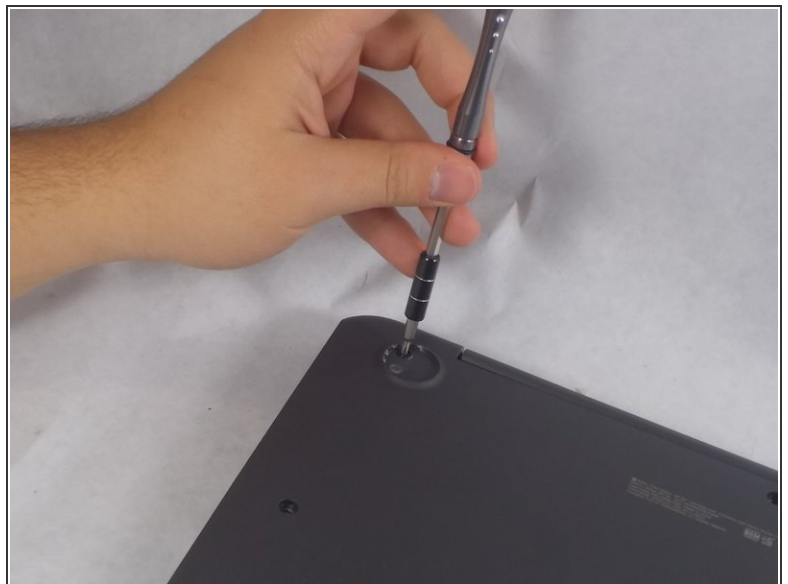


### Step 3



- Remove the seven 6mm Phillips #00 screws found underneath the stoppers.

### Step 4



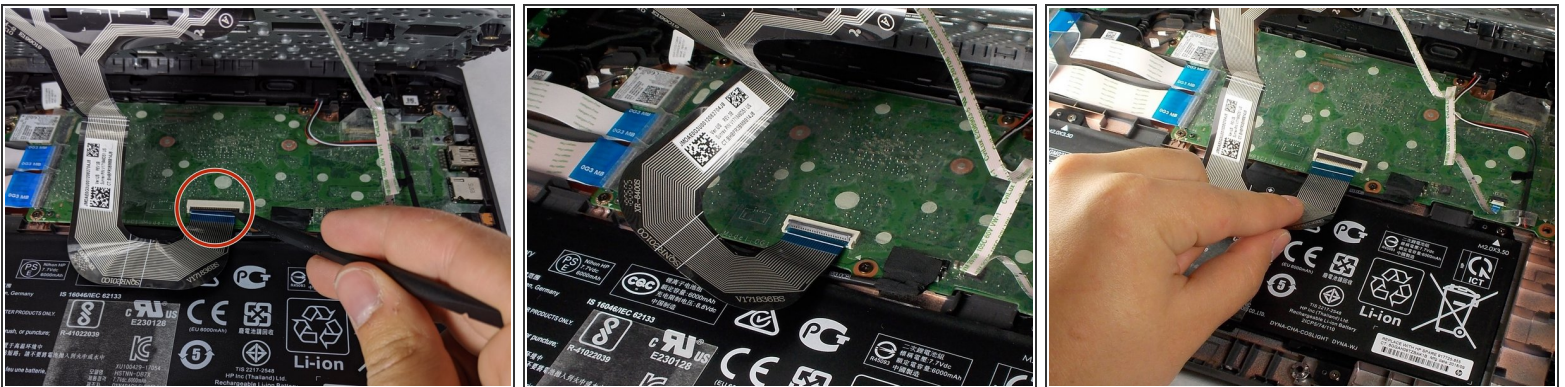
- Remove the two 9mm Phillips #1 screws.

## Step 5



- Flip the Chromebook over and open the cover.
- Insert the iFixit opening tool into the edge of the keyboard, near the mouse pad.
- By lifting the tool at an angle, work the tool around the entire perimeter of the keyboard.
- ⓘ You will hear a popping noise when you disconnect the keyboard.

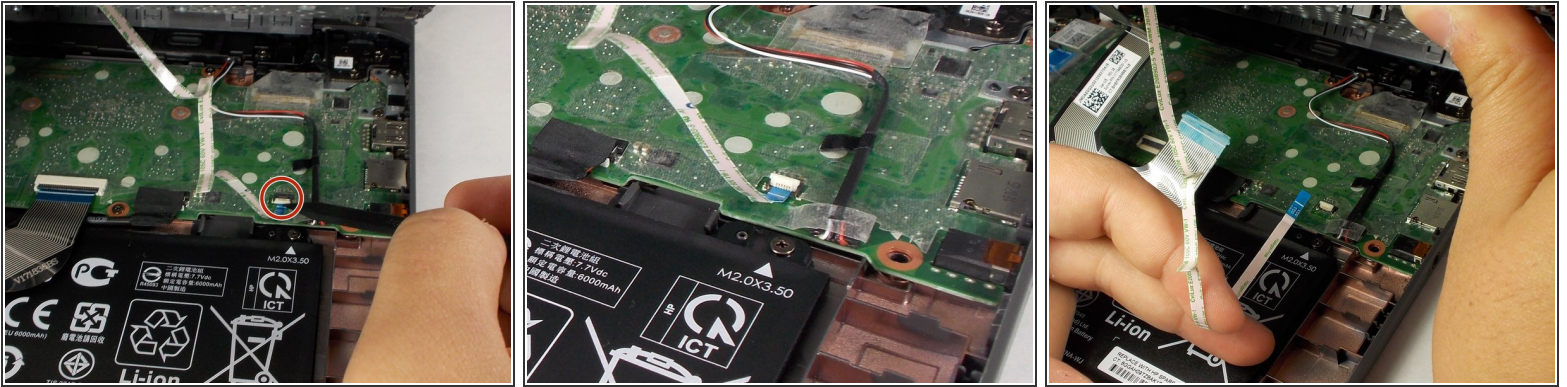
## Step 6



- Lift the keyboard from the mouse pad.
- ⚠ Lift the keyboard carefully, because there are cables connecting the keyboard to the base and they may break.
- Use your finger or the spudger tool to flip up the black locking flap.
- Grab the black cable and pull away from the motherboard.
- ⚠ Carefully lift the black piece up, because it is fragile and can break easily.

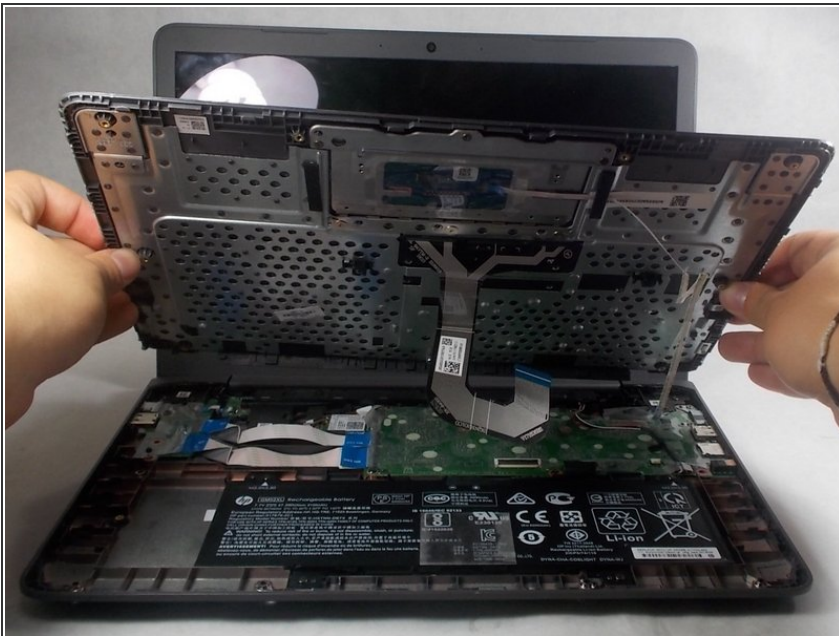


## Step 7



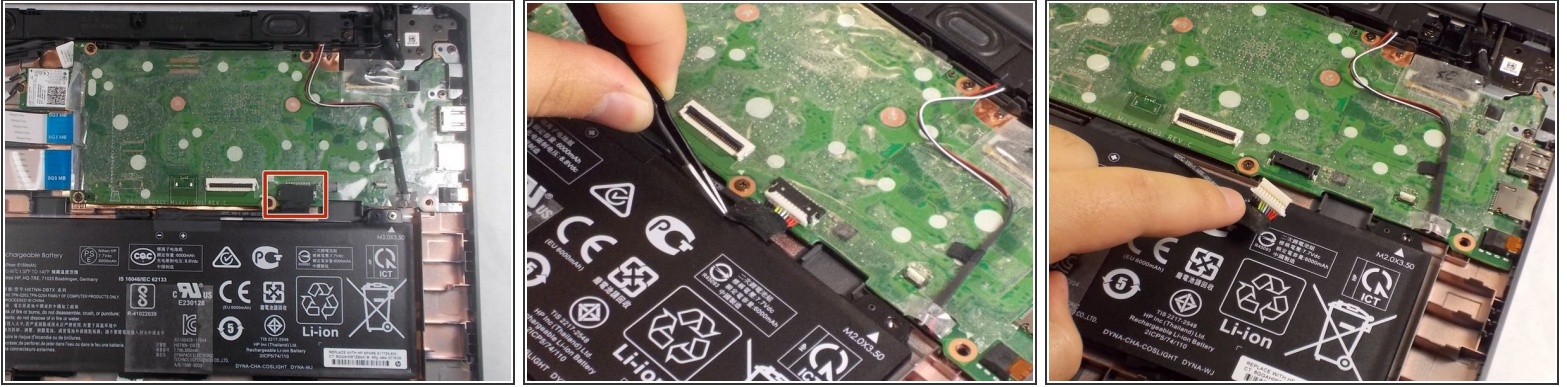
- Flip up the white locking flap with your finger or spudger tool.
- Remove the white cable from the motherboard.
- ⚠ Carefully lift the white piece up, because it is fragile and can break easily.

## Step 8



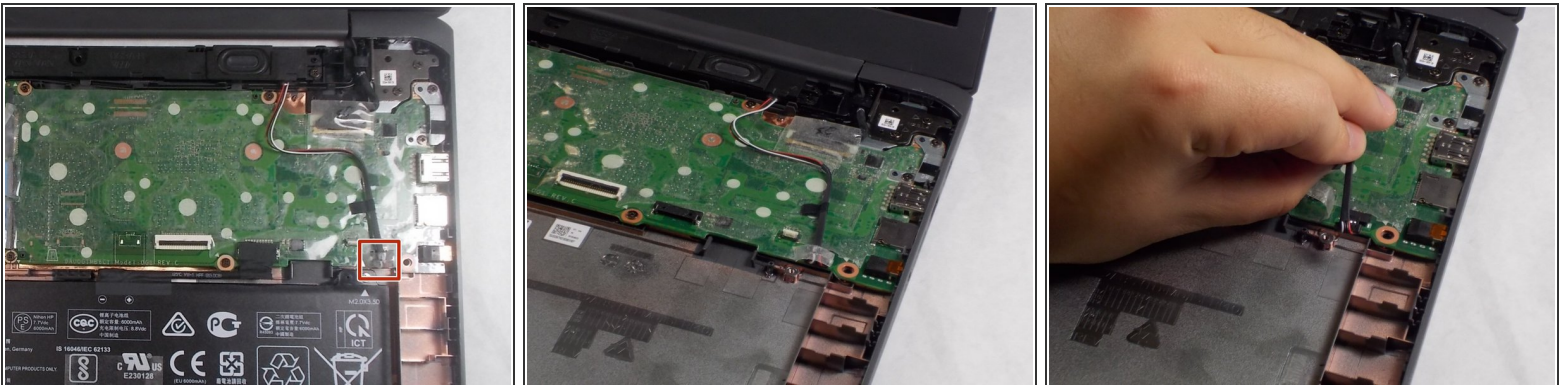
- Lift the rest of the keyboard up from the base of the Chromebook.

## Step 9 — Motherboard



- Peel back the black electrical tape from the wires connecting the battery to the motherboard using tweezers.
  - Pull the white plastic piece toward you using your finger to disconnect the wires.
- ⚠ Make sure to pull the plastic and not the wires, because pulling the wires could cause them to break.

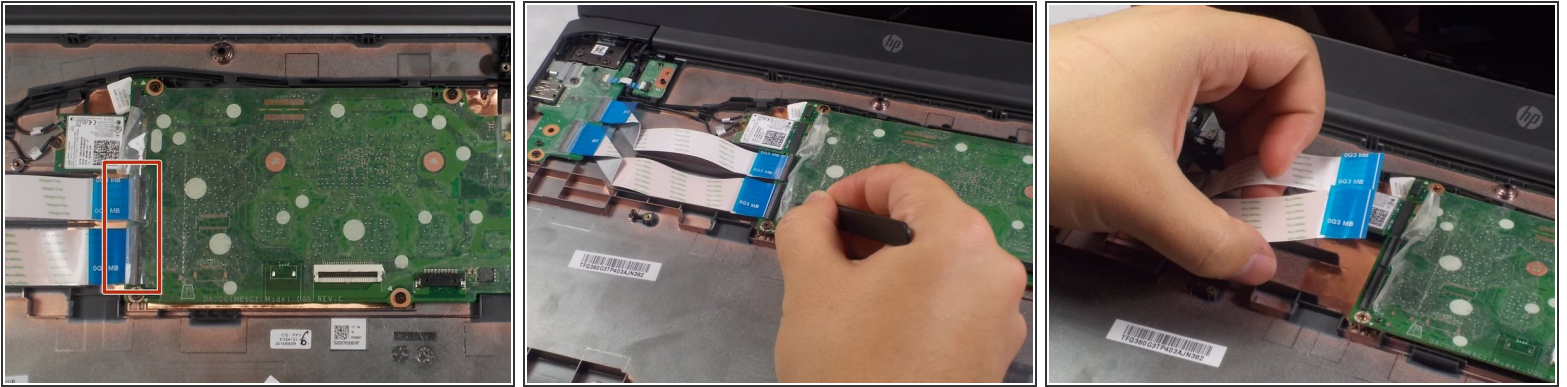
## Step 10



- Peel back the plastic covering on the wires connecting the speaker to the motherboard.
  - Using your finger, pull the white plastic piece toward you and remove.
- ⚠ Make sure to avoid pulling the wires, for it may cause them to break.



## Step 11



- Pull back the plastic covering of the cables connecting the motherboard to the daughter-board using tweezers.
- Flip up both of the black plastic pieces using the spudger.
- Remove both of the blue and white cables by pulling the blue plastic pieces toward you.
- ⚠️ Disconnect the cables carefully because they are fragile.

## Step 12



- Peel back the plastic covering of the WiFi card using tweezers.
- With a JIS J000 head, remove the 2mm screw.
- Pull the WiFi card toward the left to remove.

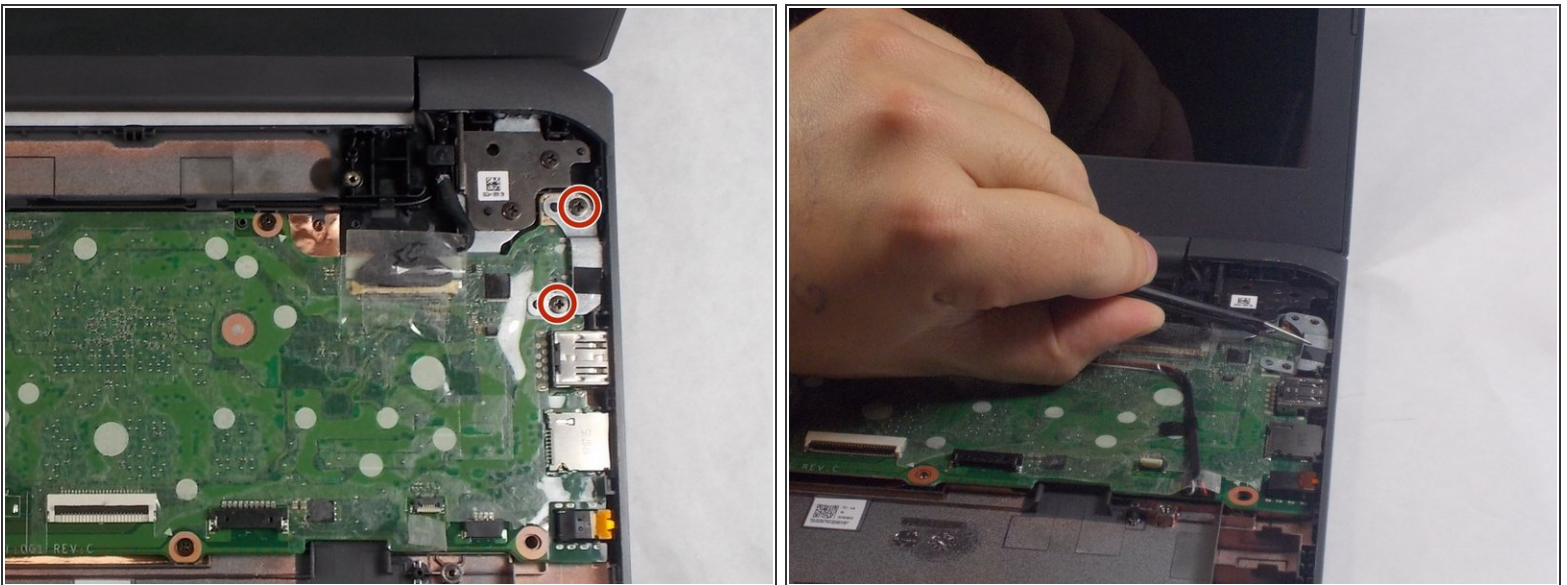


## Step 13



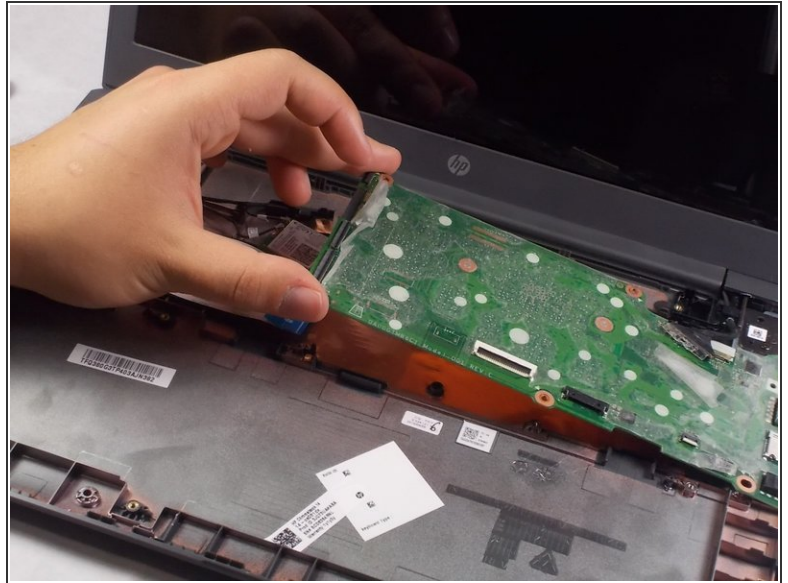
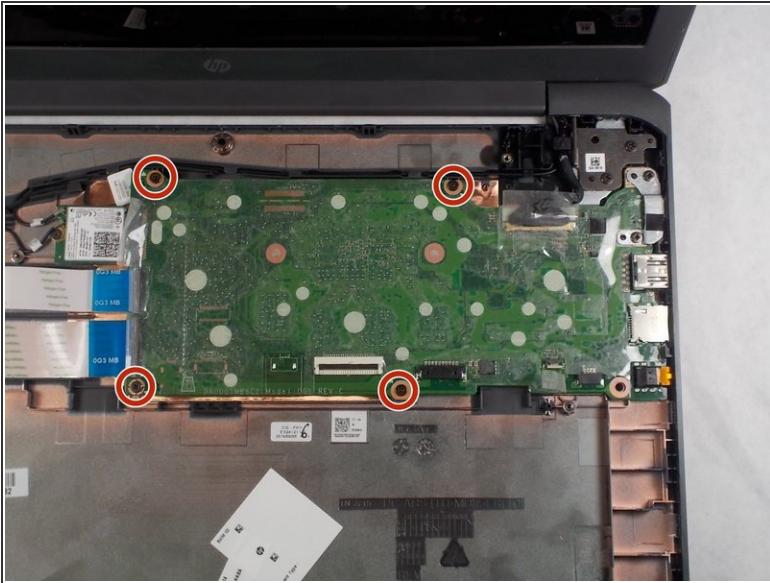
- Peel back the plastic covering on the wires connecting the screen to the motherboard using tweezers.
  - Peel back the black electrical tape using tweezers.
  - Remove the wires by pulling the plastic piece away from you.
- ⚠ Make sure to pull the plastic piece and not the wires because the wires are fragile.

## Step 14



- Using a PH0 head, remove the two 4 mm screws from the metal piece.
- Remove the metal piece using tweezers.

## Step 15



- Remove the four, 4 mm screws from the motherboard using a PH0 head.
- Remove the motherboard from the Chromebook.

To reassemble your device, follow these instructions in reverse order.