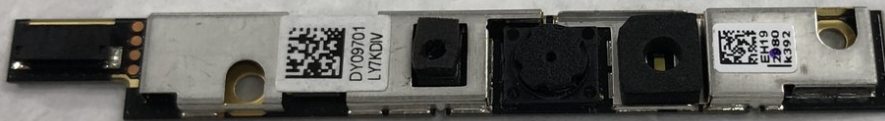




# HP Chromebook 14-x013dx Camera Replacement

This guide walks through how to remove a camera in an HP Chromebook 14-x013dx.

Written By: Eile Woeltje



---

## INTRODUCTION

This guide walks through how to remove a malfunctioning camera in an HP Chromebook 14-x013dx. This replacement requires disabling the keyboard from the laptop and removing the lid, and the total repair time should take about 30 minutes.



### TOOLS:

- [Spudger](#) (1)
  - [Phillips #00 Screwdriver](#) (1)
  - [Tweezers](#) (1)
-

## Step 1 — Keyboard, Touchpad



- Using the plastic spudger, gently lift the 5 rubber pads away from their seating.

## Step 2



- Remove the five 6mm screws located under the removed pads using Phillips #00 screwdriver.

### Step 3



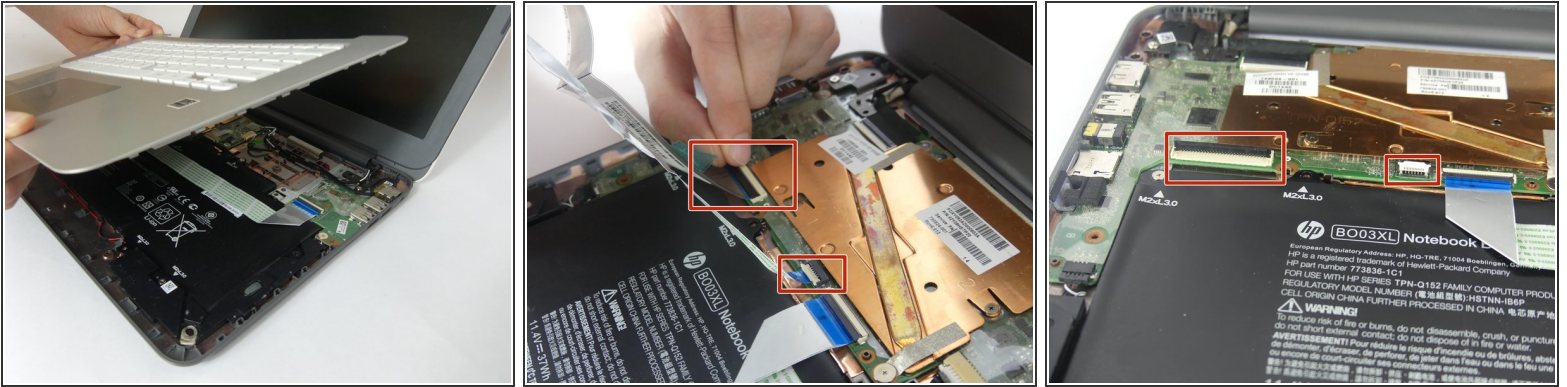
- With the Phillips #00 screwdriver, remove the remaining eight 6mm screws. You will now have thirteen 6mm screws removed from the case.

### Step 4



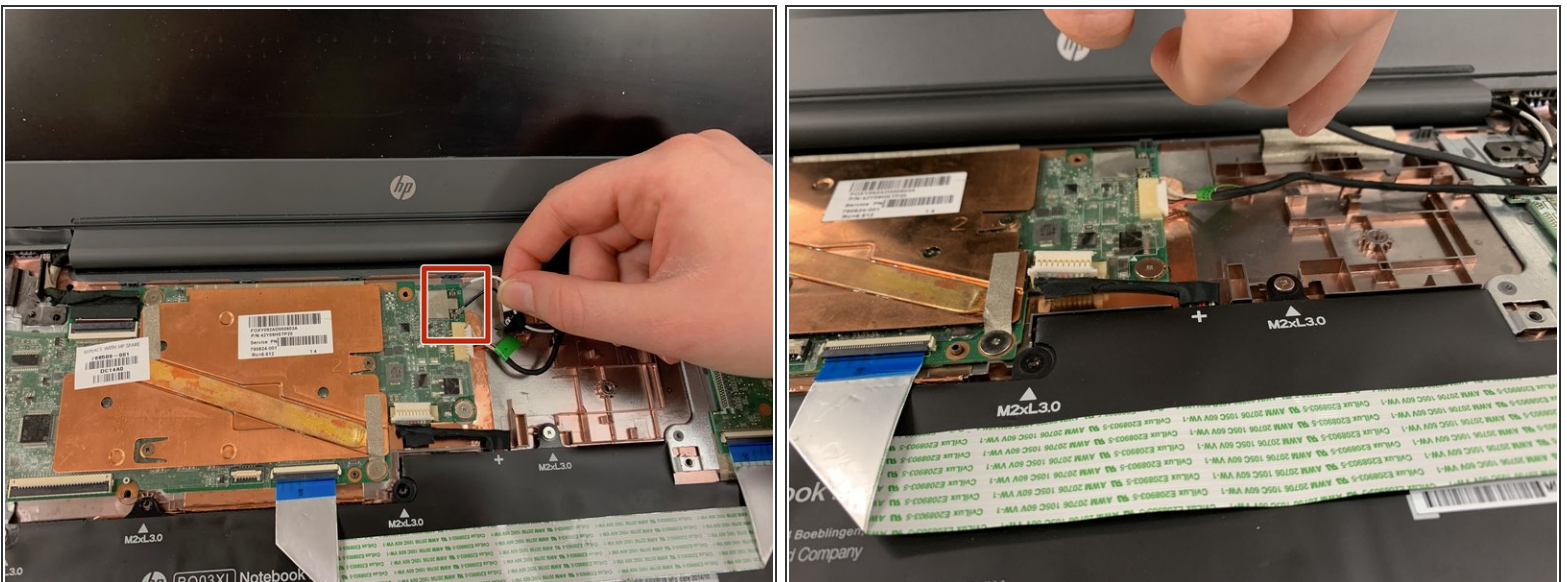
- To continue removing the back cover, turn the laptop over as displayed.
- Use the plastic spudger to gently pry around the base of the laptop from the back cover. Continue prying around the entire base of the laptop.

## Step 5



- Gently lift the silver base of the laptop from the bottom, but do not remove it.
- To remove the ribbon cables, lift the latch holding the ribbon cables in place and then pull them free.
- Remove the keyboard panel from the laptop.

## Step 6 — Camera



- Disconnect the black and white wires connected to the Wi-Fi module.
- Remove the wire from the casing.

## Step 7



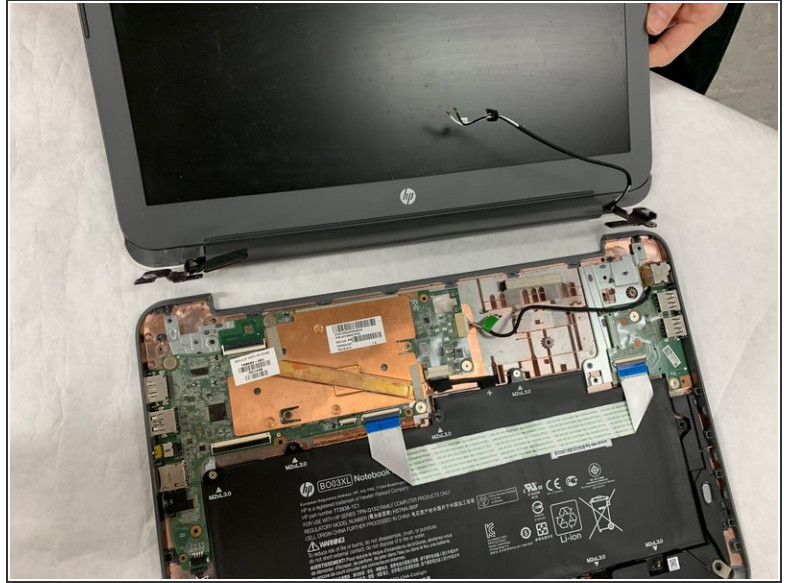
- Pull the ribbon cable out of socket.

## Step 8



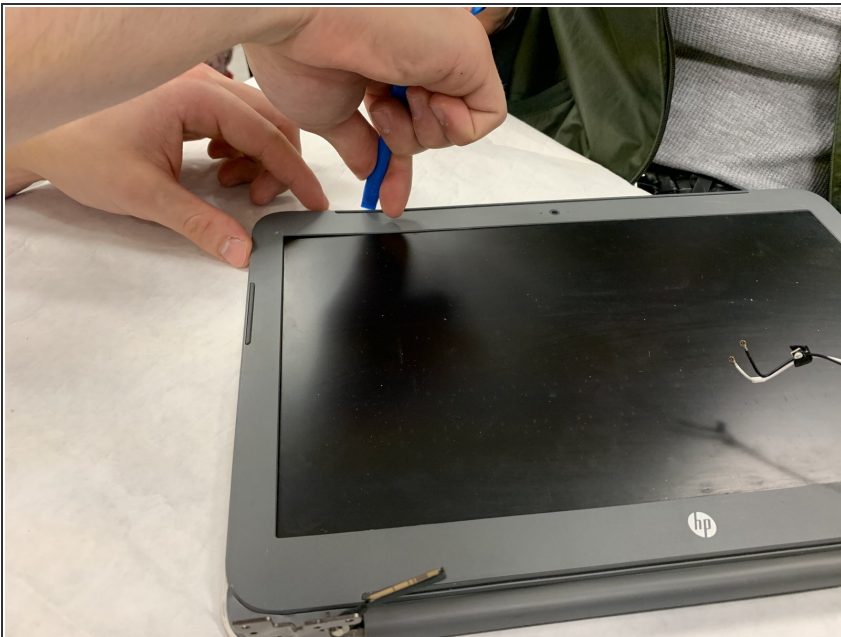
- Use a Phillips #00 screwdriver to remove the two 6mm screws located at the upper left and right corners.

## Step 9



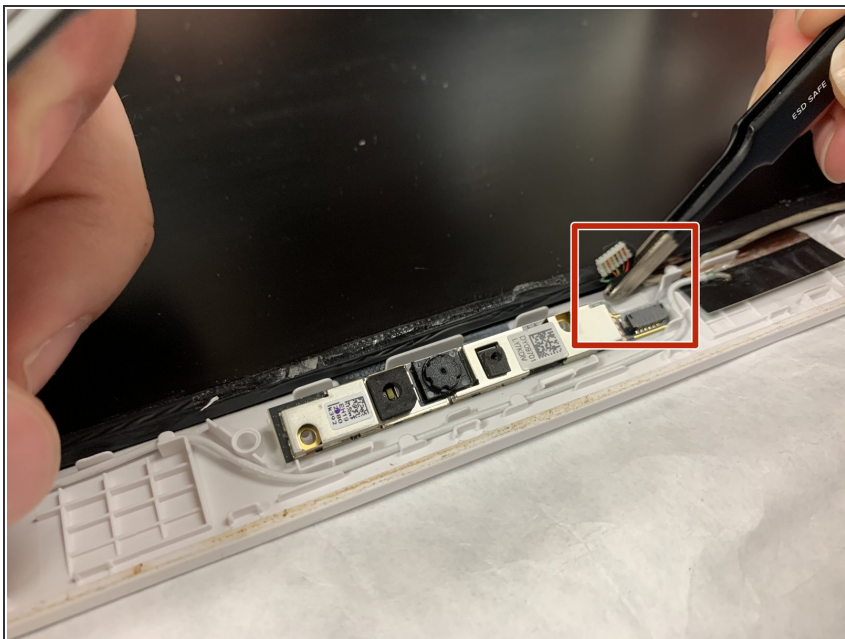
- Remove the lid out of the laptop.
- i** It is helpful to rotate the lid to a 90-degree angle.

## Step 10



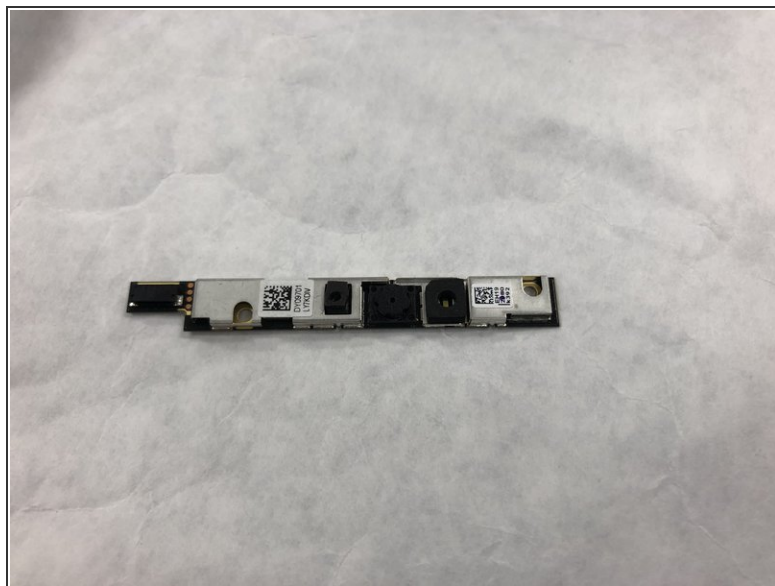
- Using the plastic opening tool, pry the left and right side of the top of the lid.
- i** It is not necessary to remove the entire frame, only pry the top to expose the camera.

## Step 11



- Using tweezers, gently remove the connection hold the camera in place.

## Step 12



- Gently pry the camera mount out of the lid.
- Lift the camera mount out of the lid.

To reassemble your device, follow these instructions in reverse order.