



# HP Chromebook x360 11-ae010nr Display Replacement

A step by step guide on how to replace the display on the HP Chromebook x360 11-ae010nr.

Written By: jonas wojtas



# INTRODUCTION

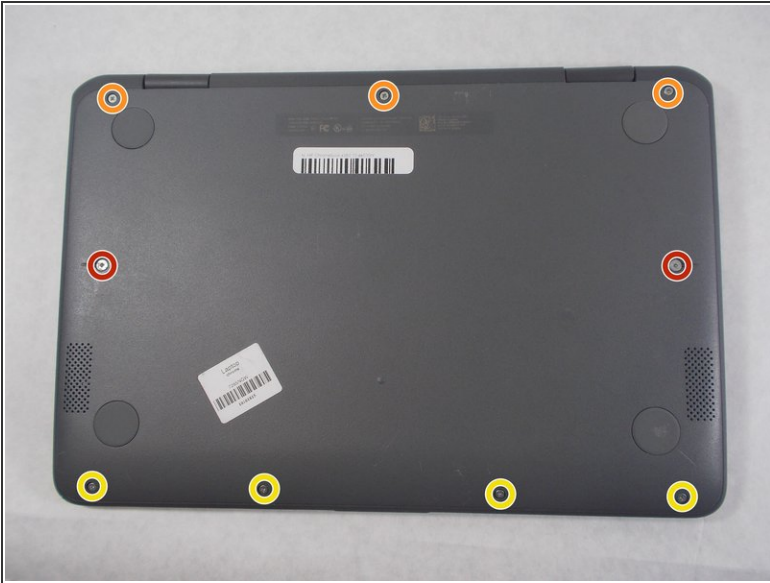
If the display on your HP Chromebook x360 11-ae010nr is broken or damaged and you wish to replace it then this guides for you. The guide will show a step-by-step process on how to disconnect the display from the rest of your device.



## TOOLS:

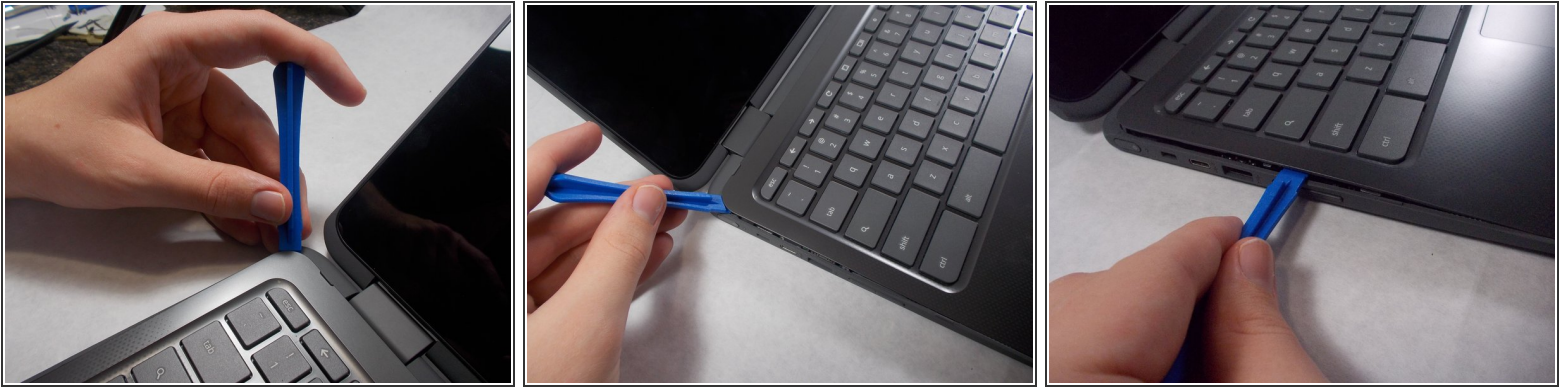
- [Phillips #1 Screwdriver](#) (1)
  - [Spudger](#) (1)
  - [iFixit Opening Tools](#) (1)
  - [Phillips #0 Screwdriver](#) (1)
  - [Tweezers](#) (1)
-

## Step 1 — Keyboard



- Flip the device upside down so that the screws are visible.
- Loosen two captive Phillips #1 screws from the center of the device.
- Remove three 9.3 mm Phillips #1 screws from the joint side of the device.
- Remove four 6.1 mm Phillips #1 screws from the opening side of the device.

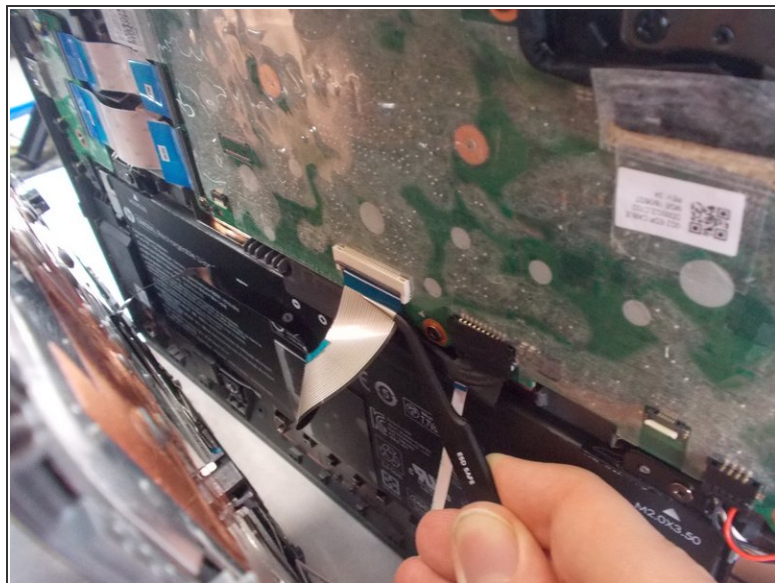
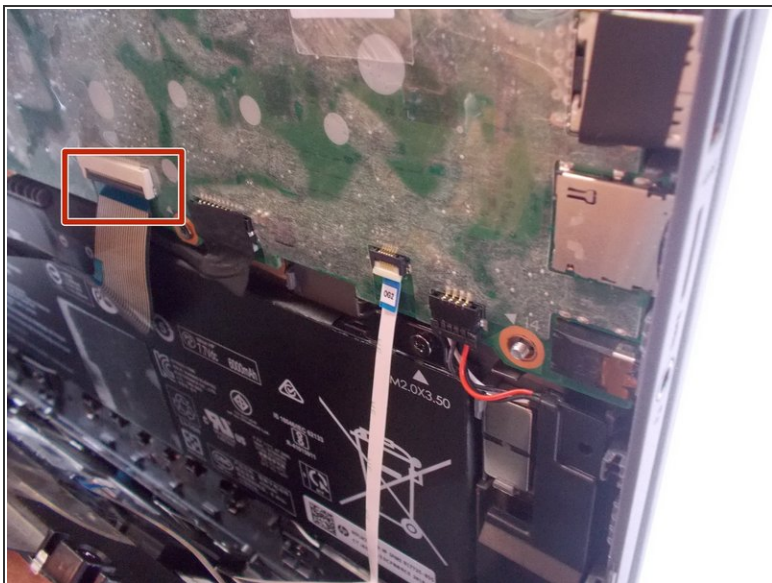
## Step 2



- Insert an iFixit opening tool between the edge of the keyboard assembly and the base of the device.
- Push down on the handle of the opening tool to create an opening between the keyboard assembly and the base of the device.
- Move the opening tool around the device, popping open the clips with force when necessary, until the keyboard assembly is fully lifted from the base of the device.

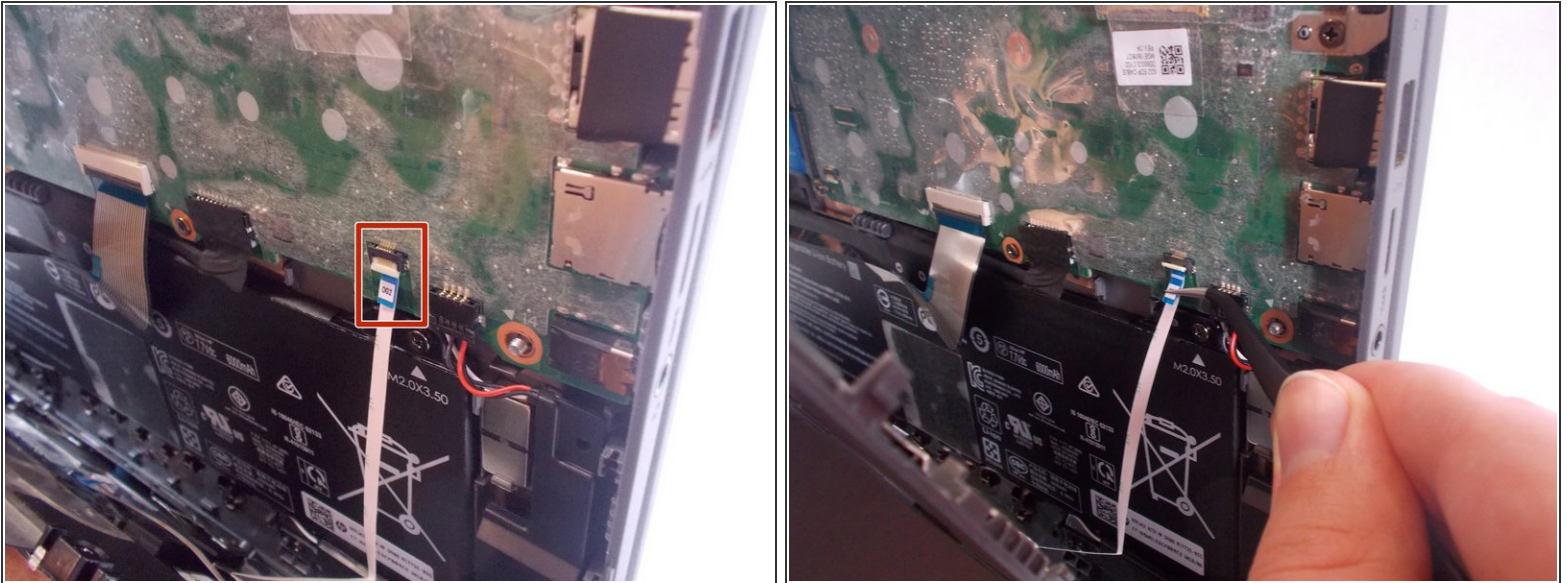


## Step 3



- Separate the keyboard assembly and the case.
- ⚠ Two cables connect the keyboard to the device, so take caution to not damage these cables.
- Flip the black plastic tab where the wider cable meets the main board using the tip of a spudger or a fingernail.
- Remove the cable with curved needle nose pliers or your fingers.

## Step 4



- Flip the white plastic tab where the thinner cable meets the main board using the tip of a spudger or a fingernail.
- Remove the cable with curved needle nose pliers or your fingers.
- Separate the keyboard from the laptop.

## Step 5 — Display



- Use a pair of tweezers to gently but firmly pull each of the black cables out from their sockets.

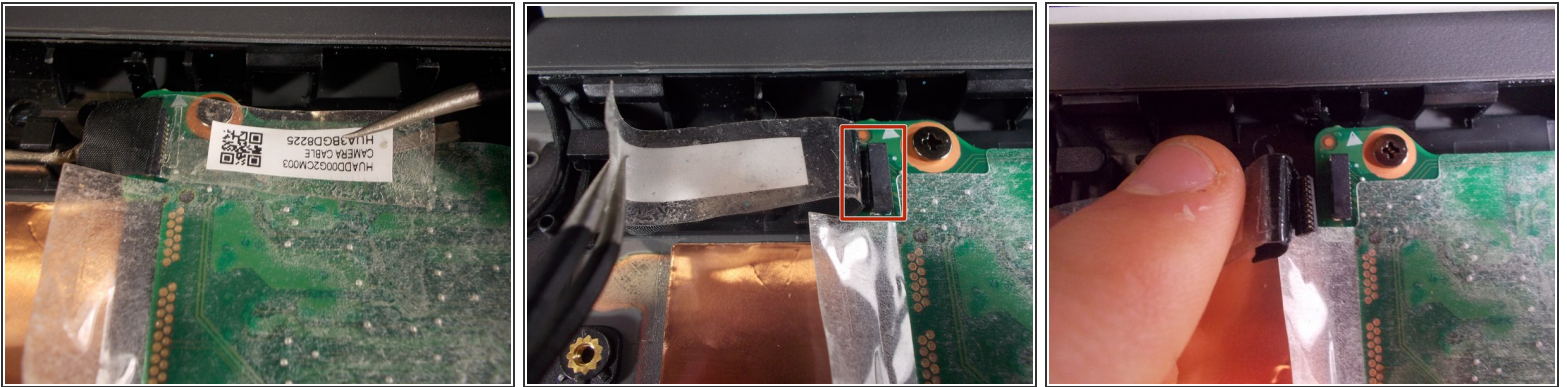


## Step 6



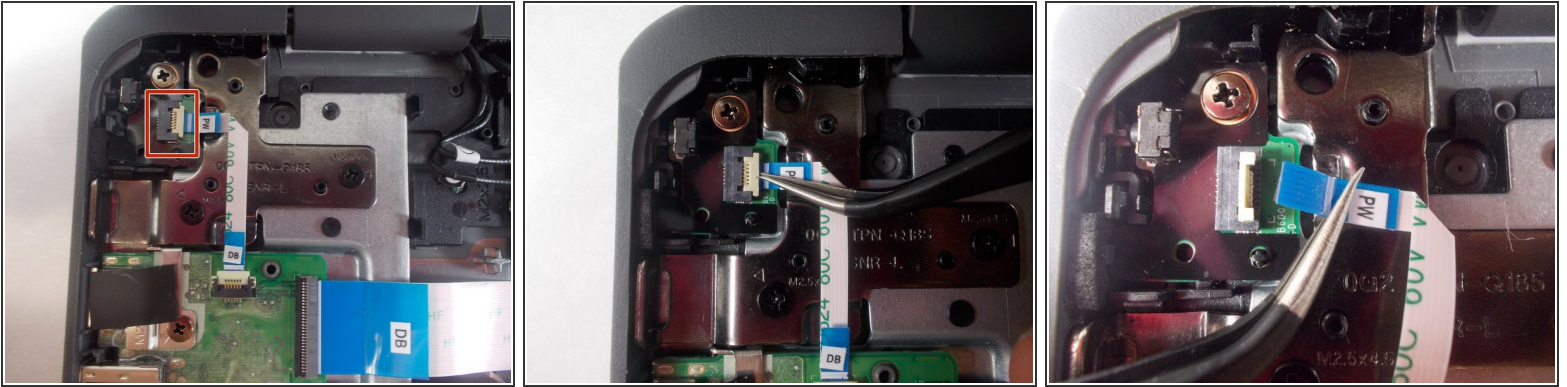
- Use a pair of tweezers to partially peel and hold both plastic strips away from the golden connector cable.
- Use an opening tool to pull the golden cable out from its socket.

## Step 7



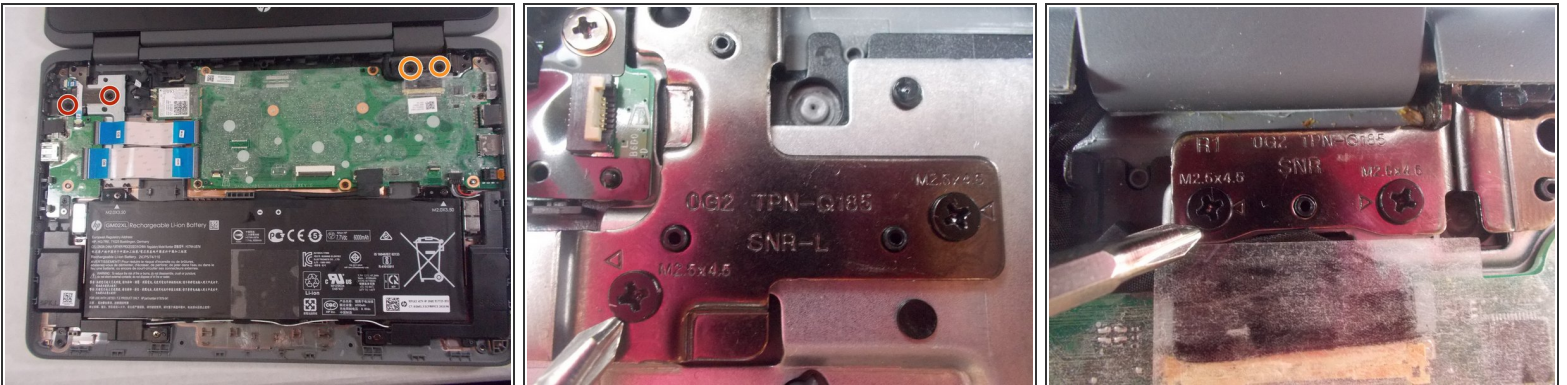
- Use a pair of tweezers to gently pull back and hold the plastic strip.
- Pull the black cable out from its socket.

## Step 8



- Use a pair of tweezers to flip up the white clip.
- Gently remove the white and blue ribbon cable from its socket.

## Step 9




- Remove the two 6 mm Phillips #0 screws from the metal bracket on the left side of the device.
- Remove the two 6 mm Phillips #0 screws from the metal bracket on the right side of the device.



## Step 10



- Carefully pull the display towards you while keeping the both brackets parallel to the body of the device.

 Keep wires out of the way as they can be easily damaged when removing the display.

To reassemble your device, follow these instructions in reverse order.