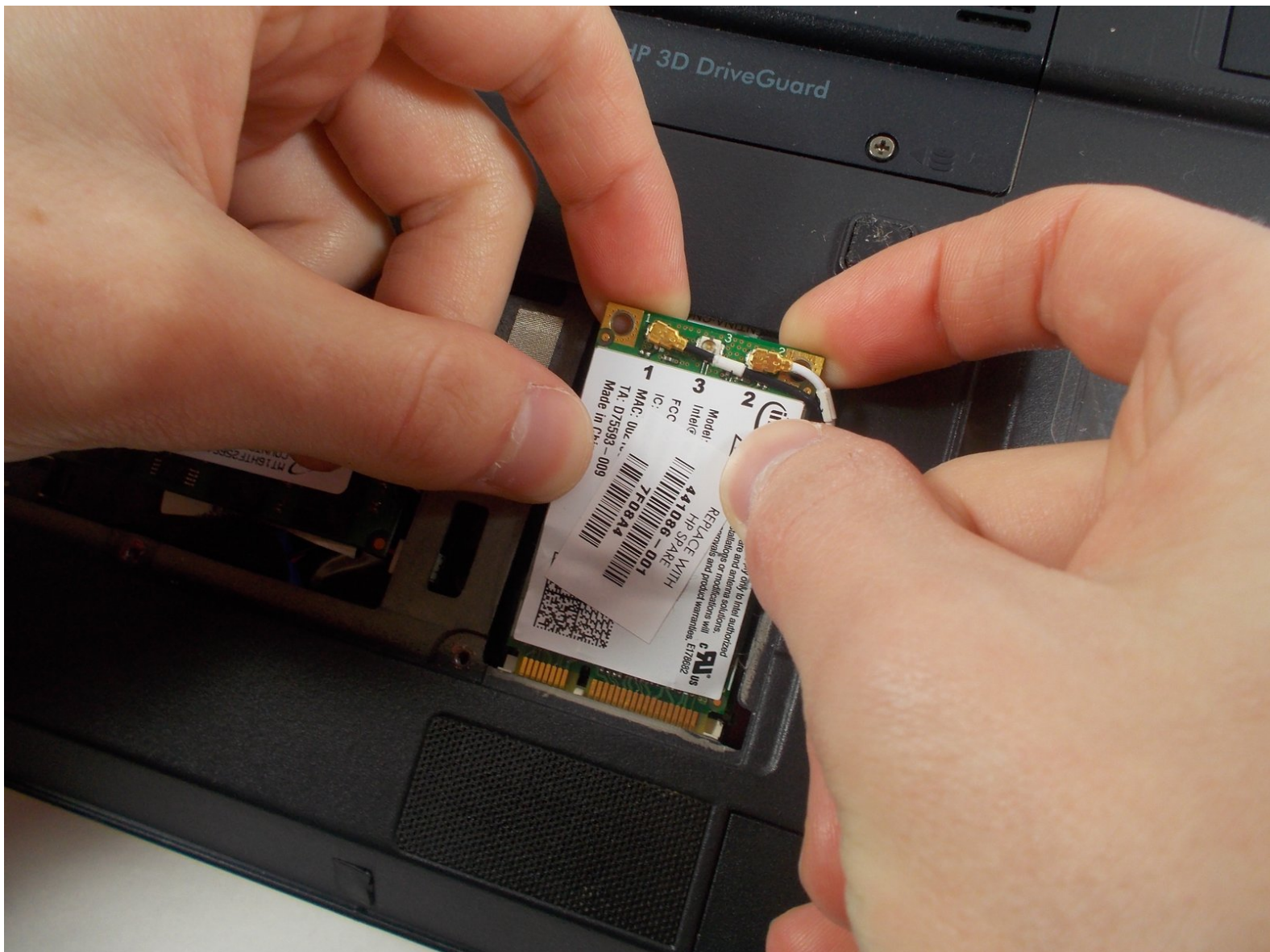




HP Compaq 2510p WiFi Card Replacement

How to remove and replace WiFi card in the HP Compaq 2510p.

Written By: Dan Champagne



INTRODUCTION

How to remove and replace WiFi card in the HP Compaq 2510p.



TOOLS:

- [Phillips #0 Screwdriver](#) (1)
 - [Heavy-Duty Spudger](#) (1)
-

Step 1 — WiFi Card



- Flip the laptop over and locate the RAM cover plate towards the left of the laptop. There will be two screws located on the panel.

Step 2



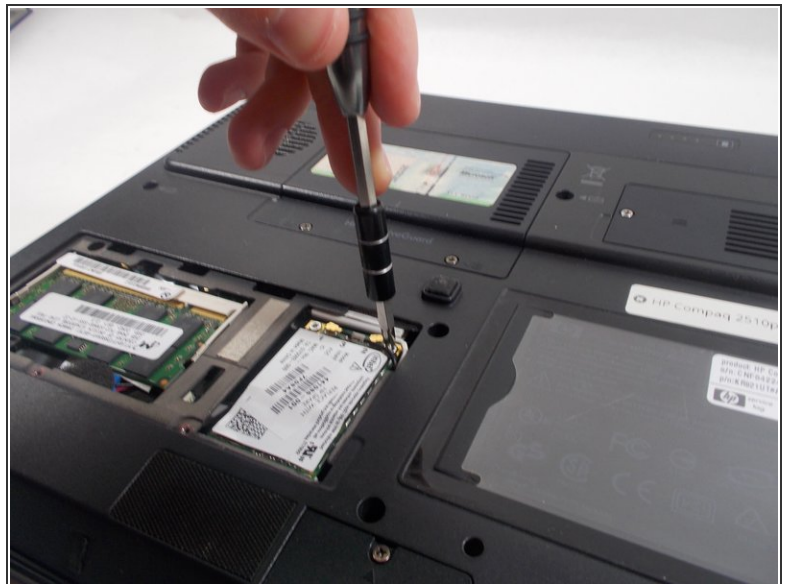
- Using your Philips screwdriver, unscrew both screws.

Step 3



- Lift the plate with your finger to remove it.

Step 4



- Locate the screws at the top of the card and use your Philips screwdriver to remove them.

⚠ Be sure to ground yourself before touching components.

Step 5



- Lift the card from underneath the top, using the spudger to leverage the card upwards. Then pull to release the card.

⚠ Always use ESD safe tools when repairing electronics. The black nylon spudger should be used whenever possible.

Step 6



- Pull on each of the wires connected to the card. They will easily pop off and the WiFi card will be released.

To reassemble your device, follow these instructions in reverse order.