



HP Compaq 6730b Display Replacement

Here is a HP Compaq 6730b with a cracked LCD after having been dropped. This is a straight forward repair.

Written By: oldturkey03



INTRODUCTION

This laptop needed a new LCD. It is actually a straight forward task and does not require a lot of special tools. I did remove the fan since it was easier to remove one of the connectors, but it is not an absolute must, I just preferred it that way.



TOOLS:

- [Phillips #1 Screwdriver](#) (1)
- [Phillips #0 Screwdriver](#) (1)
- [iFixit Opening Tools](#) (1)
- [T8 Torx Screwdriver](#) (1)



PARTS:

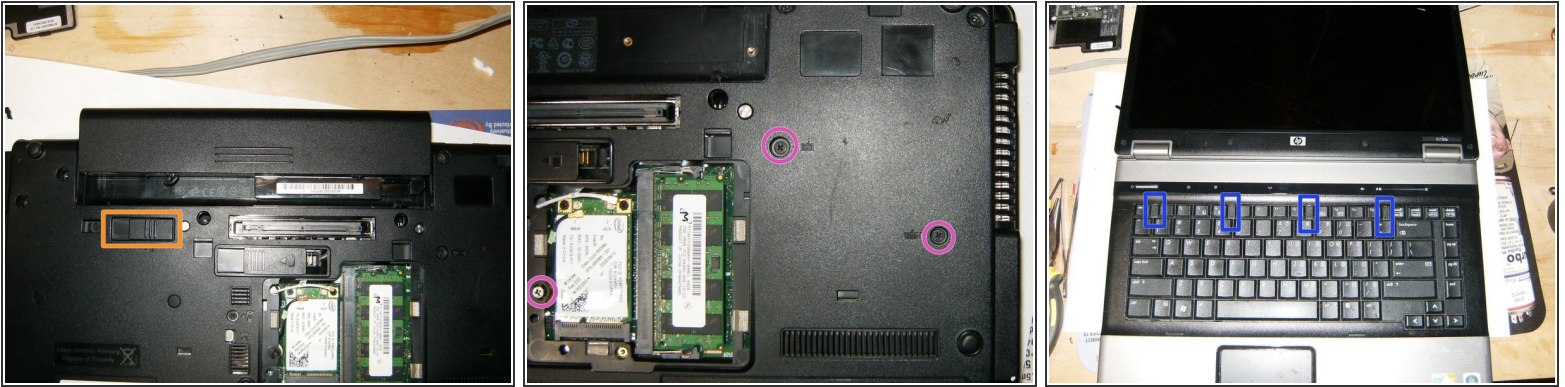
- [Replacement LCD 492175-001](#) (1)

Step 1 — Display



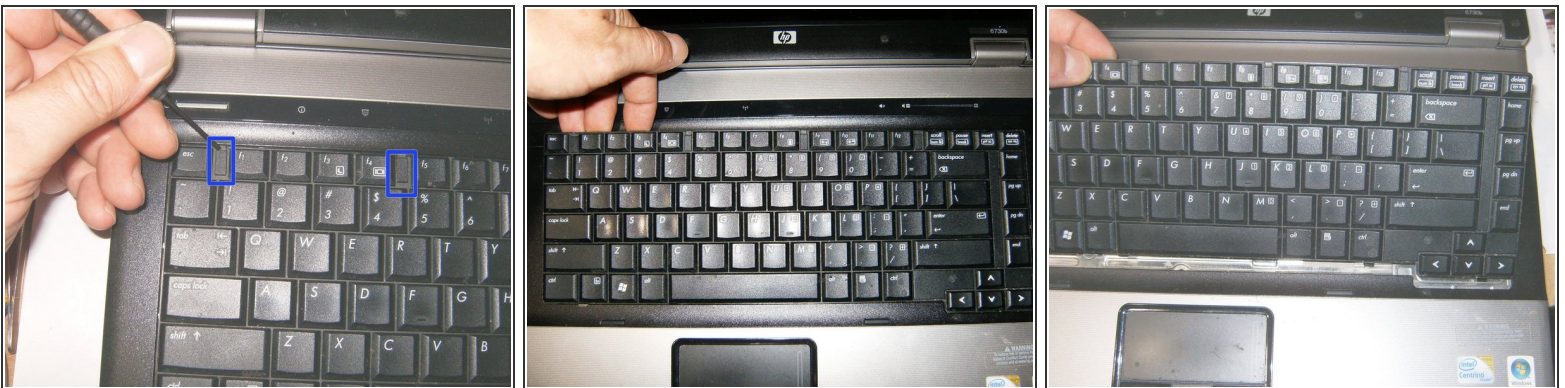
- Okay, so here is a HP 6730b that was accidentally dropped. The cracks in the LCD are clearly visible on the left side of the image.
- Shut down the computer. Disconnect all external devices connected to the computer. Disconnect the power from the computer by first unplugging the power cord from the AC outlet and then unplugging the AC adapter from the computer.
- Close the screen and turn the computer over. Remove the memory/WLAN module compartment cover by loosening the Phillips 2.0×5.0 "captive" screw. They are secured by a spring clip at the back, so they will not be easily removed. All that is required is to loosen those.
- Disconnect the WLAN antenna cables from the terminals on the WLAN module. The black cable is connected to the WLAN module "Main" terminal. The white cable is connected to the WLAN module "Aux" terminal.

Step 2



- Remove the battery. Slide the locking tab to the left and release the battery.
- Loosen the three Phillips 2.5×9.0 captive screws that secure the keyboard to the computer.
- Turn the computer display-side up, with the front toward you. Open the computer as far as possible. There are four retention tabs that hold the keyboard down.

Step 3



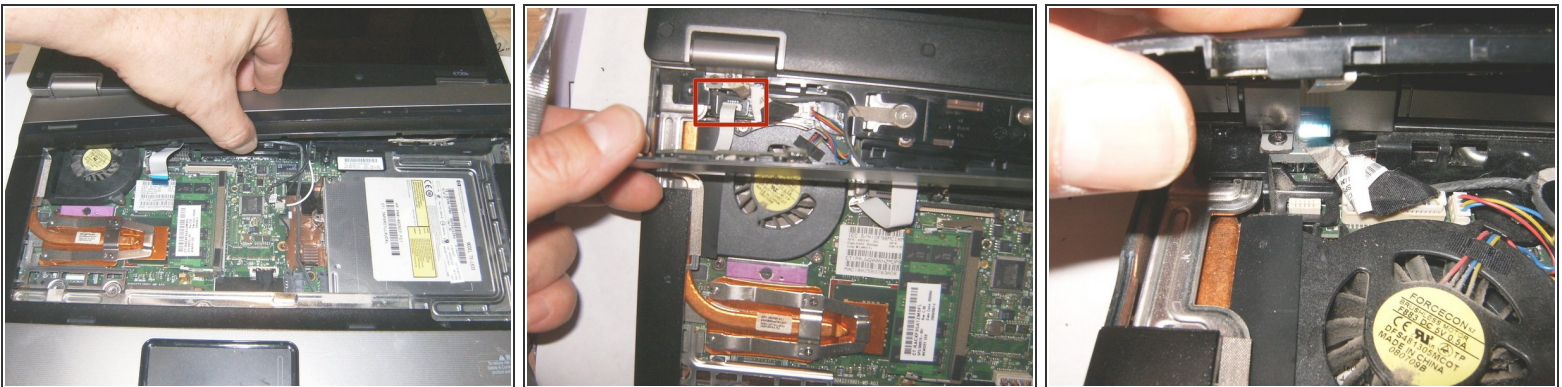
- Use a small screwdriver, or other instrument, to slide the four tabs in a downward direction toward the palmrest.
- Gently lift the keyboard up from the display side,
- and tilt it toward the front of the computer. Do not lift it up too fast or too high, the keyboard ribbon cable is still connected.

Step 4



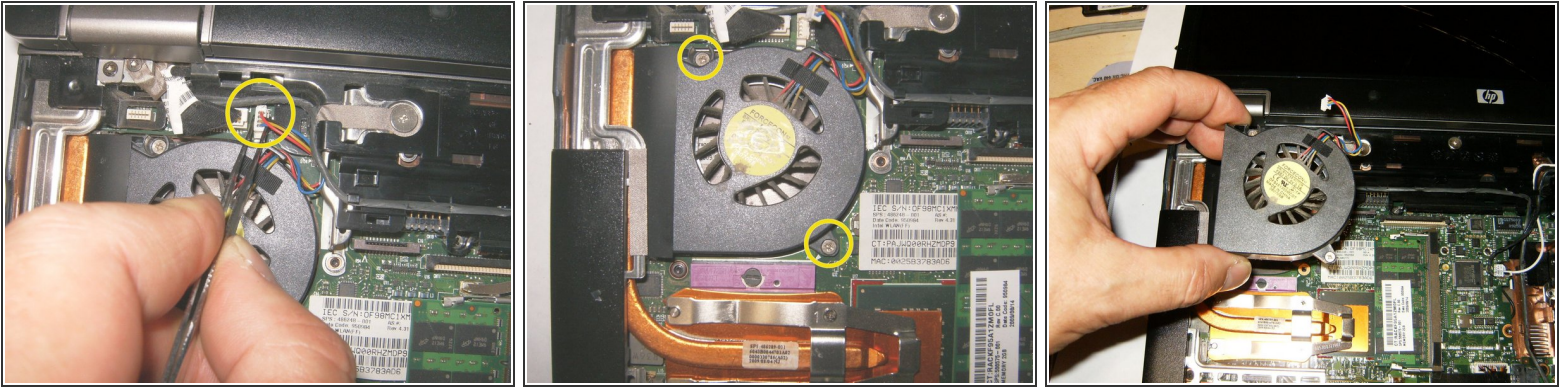
- Here is the keyboard ribbon cable seated in the zero insertion force (Zif) connector.
- Release the ZIF connector to which the keyboard cable is attached, by lifting the clasp in an upward direction. Disconnect the keyboard cable from the system board.
- Release the Zif connector to which the power button board cable is connected, by lifting the clasp of the Zif connector in an upward direction.

Step 5



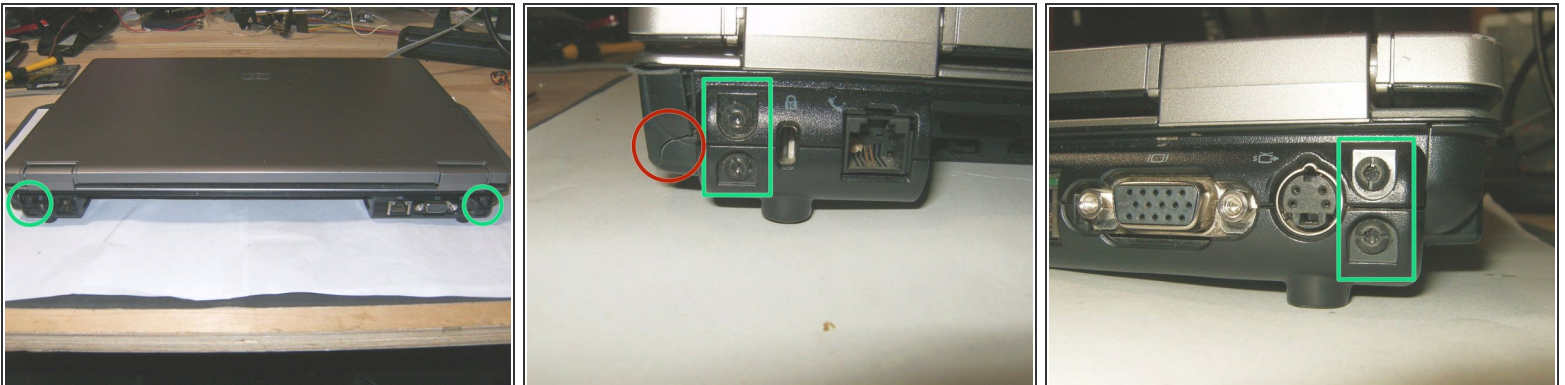
- Lift the left and right sides of the switch cover until it detaches from the computer, but do not yet try to remove it.
- The LED board cable is still attached, disconnect it from the Zif connector by simply pulling it out in an upward direction.
- With both ribbon cables disconnected, remove the switch cover.

Step 6



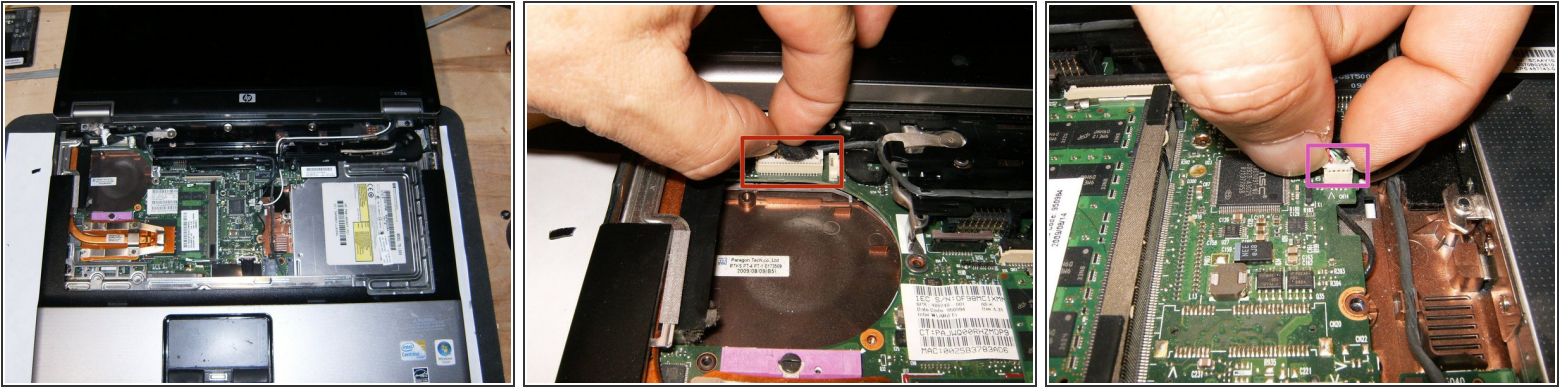
- Remove the fan connector. (it is not necessary to use forceps or any other tool)
- Loosen the two Phillips 2.5×7.0 screws that secure the fan to the base enclosure.
- Remove the fan from the case.

Step 7



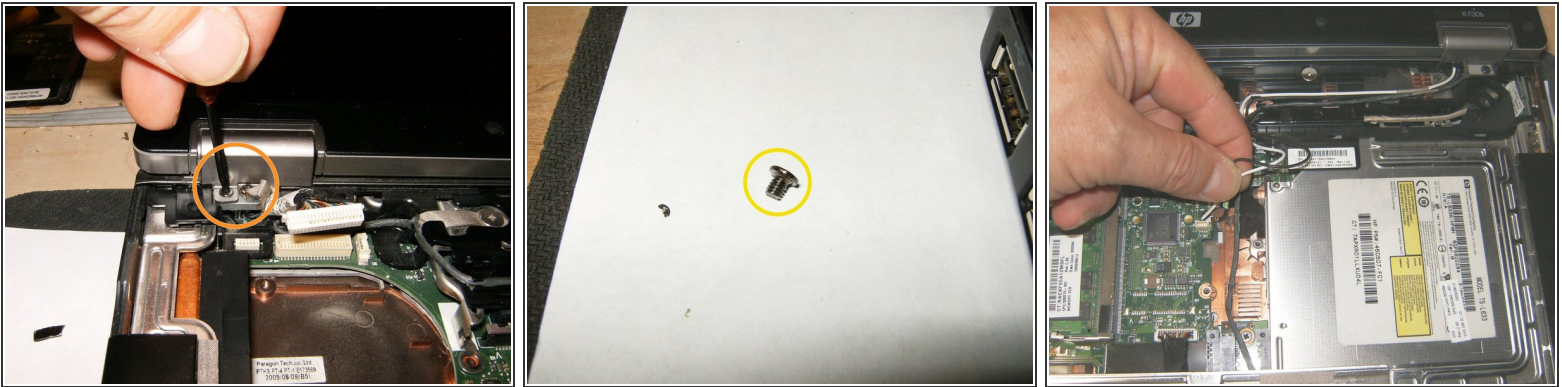
- Close the computer and position it with the rear panel toward you. Remove the four Torx T8 M2.5×9.0 screws that secure the display assembly to the computer.
- There are two on the left side,
 - Notice cracked bottom case from impact, no sequela from it.
- and two screws on the right. Note the slots in the screw heads. these screws can also be removed with a flat tip screwdriver.

Step 8



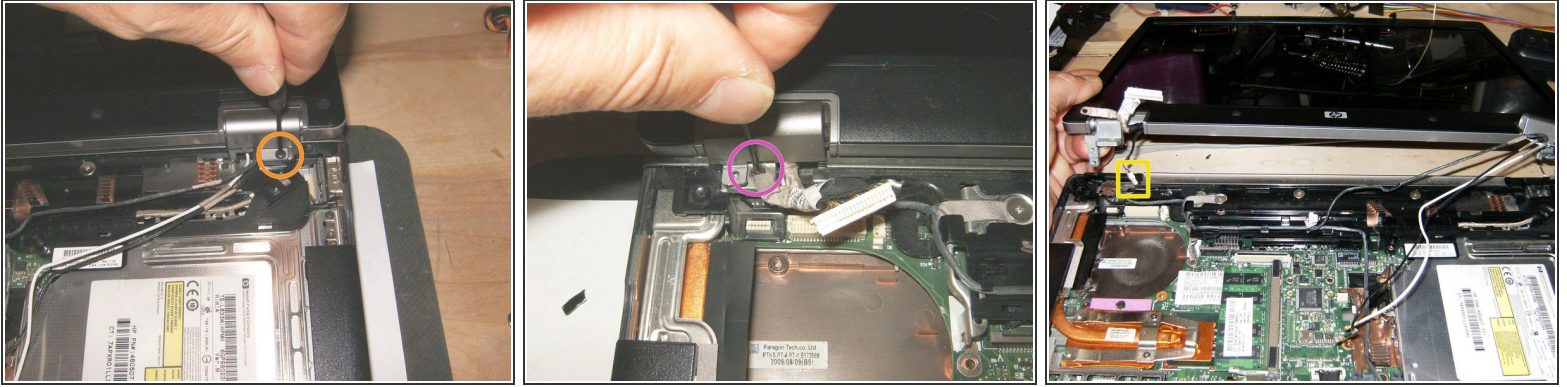
- Position the computer with the front toward you and open the computer as far as possible.
- Disconnect the display panel cable from the system board, by pulling the connector from the socket. Do not pull the cable, but pull on the connector.
- Disconnect the camera cable from the system board.

Step 9



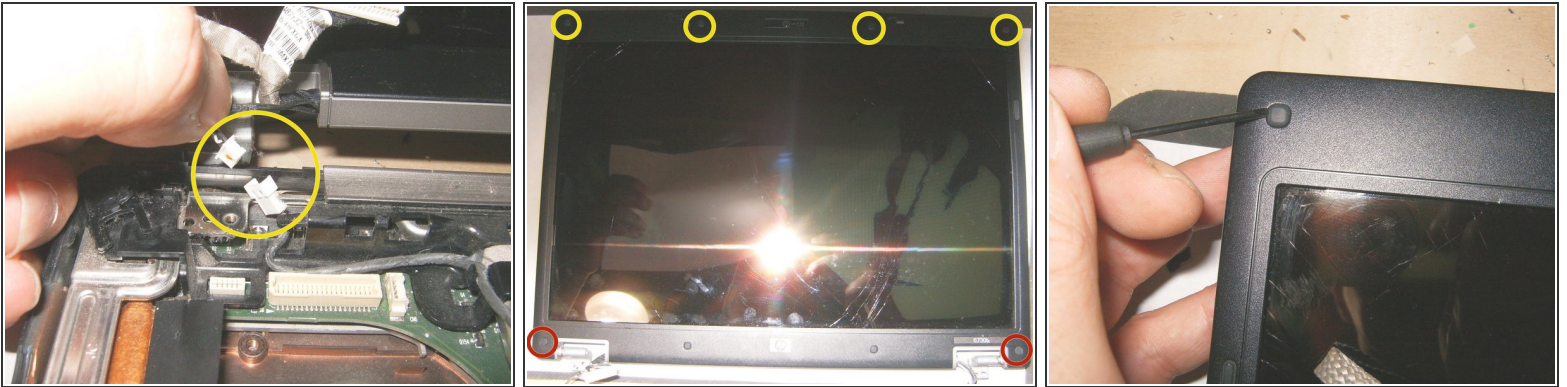
- Remove one of the two T8 M2.5×9.0 screws that secure the display assembly to the computer. The screw on the left display assembly hinge secures a display panel cable ground loop.
- The second screw on the left side is only 3mm in length but must be removed as well
- Pull the two antenna cables out from the bottom of the case.

Step 10



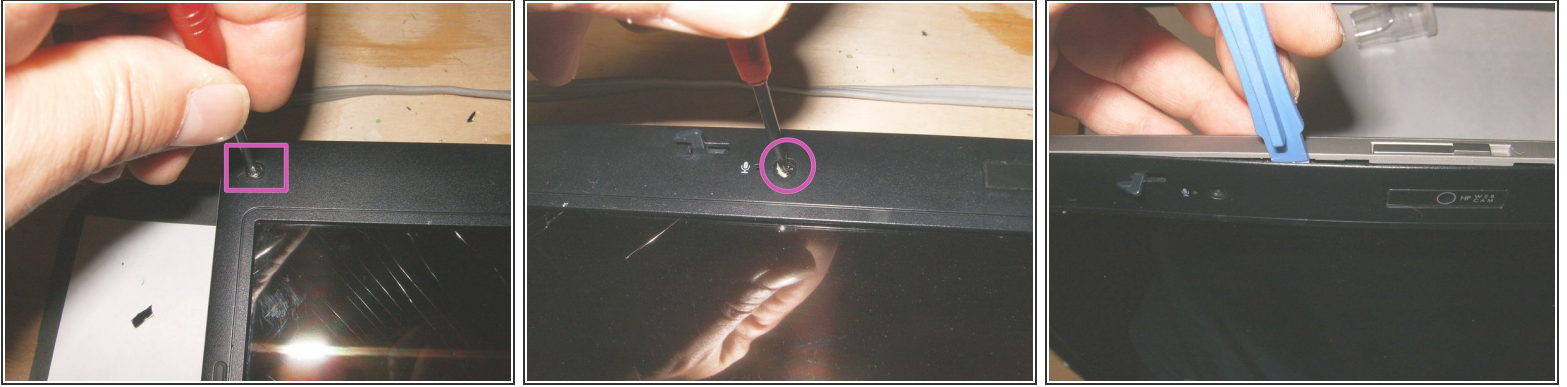
- Remove the T8 M2.5×9.0 screws on the right side hinge.
- Now remove the screw from the left hinge that holds the ground loop. the display is no longer supported, so lift it straight up.
- The microphone cable is still attached.

Step 11



- Disconnect the camera cable. The display can now be separated from the bottom case.
- There are four beveled rubber screw covers on the display bezel top edge.
 - and two flat rubber screw covers on the display bezel bottom edge
- These are simply glued in. Use a small screwdriver or similar instrument to remove them

Step 12



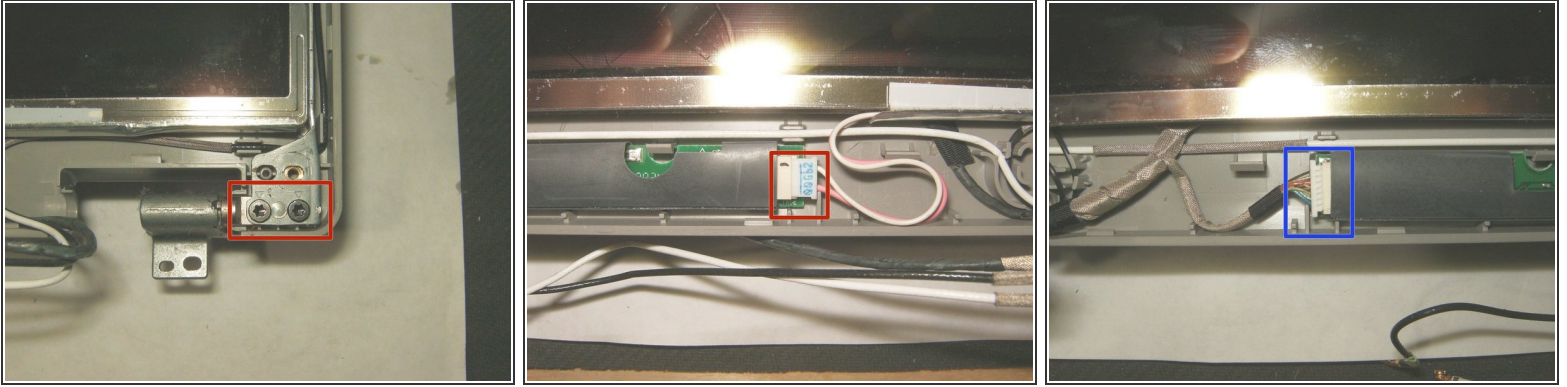
- under the screw covers are six Torx T8 M2.5×7.0 screws that secure the display bezel to the display assembly.
- Remove all six of those.
- Use a plastic opening tool to insert at the edge of the bezel and move it along the whole bezel.

Step 13



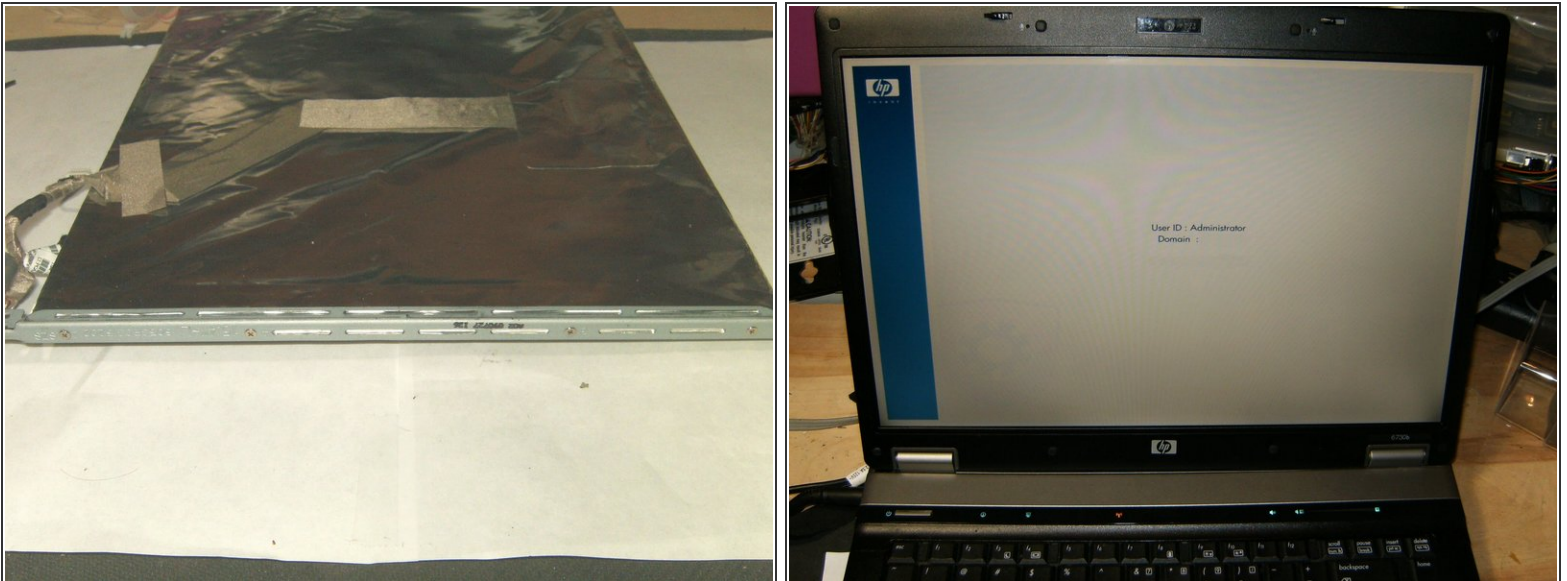
- It does not require any force to pop the bezel of its clips. Just use the opening tool gently along the edges.
- Remove the bezel to expose the LCD
- Remove the two T8 M2.5×7.0 screws on the right, that secure the display panel to the display enclosure.

Step 14



- Remove the two T8 M2.5×7.0 screws on the left, that secure the display panel to the display enclosure.
- Disconnect the backlight cable from the display inverter.
- Disconnect the display panel cable from the display inverter

Step 15



- The last steps are to remove the display hinges from the LCD panel. Remove the four Phillips screws from each side of the panels. The panel is now ready to be replaced.
- With everything re-assembled, hopefully this is something like what you will see.

To reassemble your device, follow these instructions in reverse order.