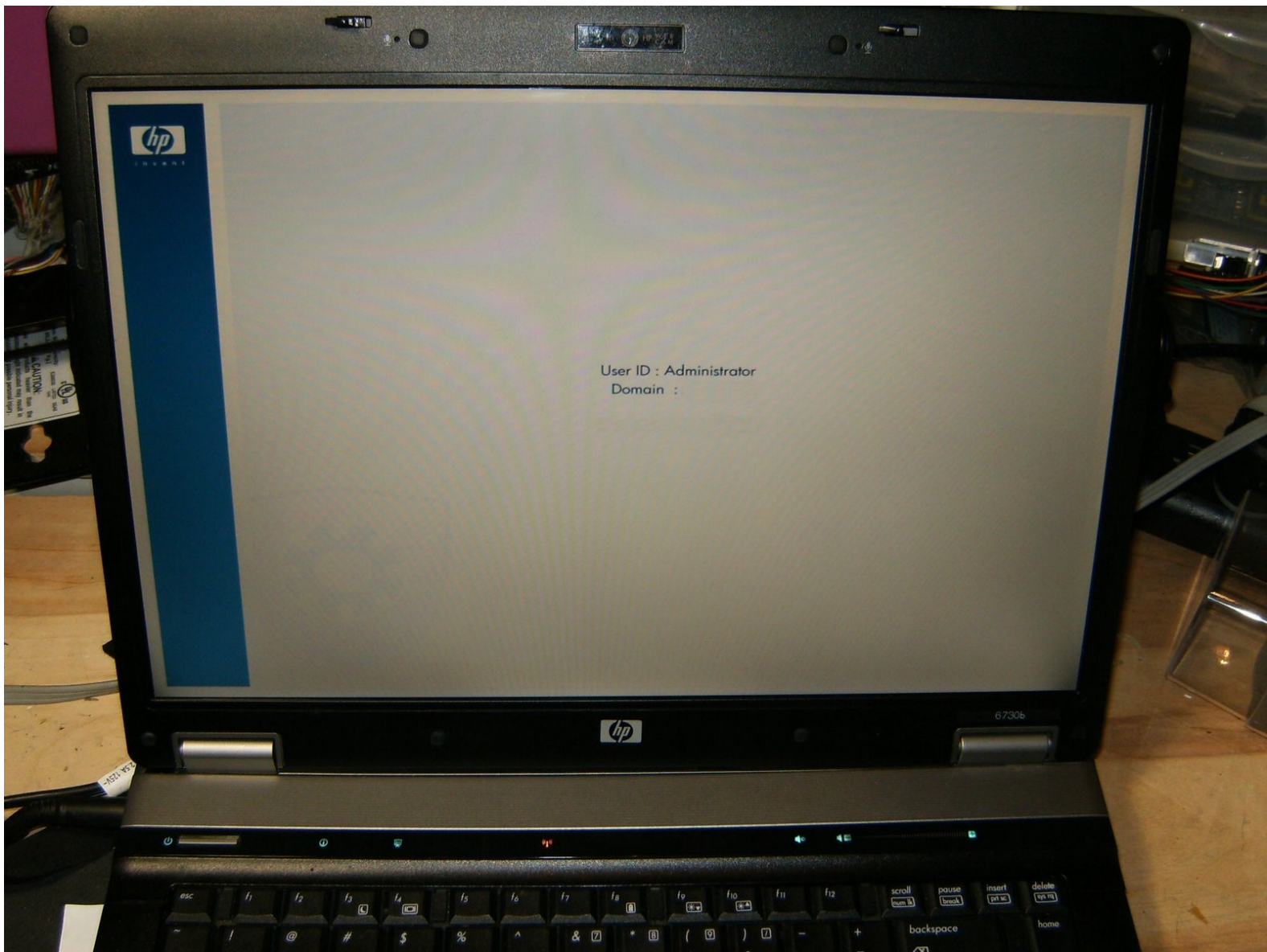




HP Compaq 6730b Switch Cover Replacement

The switch cover contains the LED's as well as the touch volume control. Removal of this will be necessary to either replace the cover itself or the LCD.

Written By: oldturkey03



INTRODUCTION

This will show how to replace the switch cover. Straight forward and should only take a few minutes. No surprise in the the hardware, no hidden screws etc.



TOOLS:

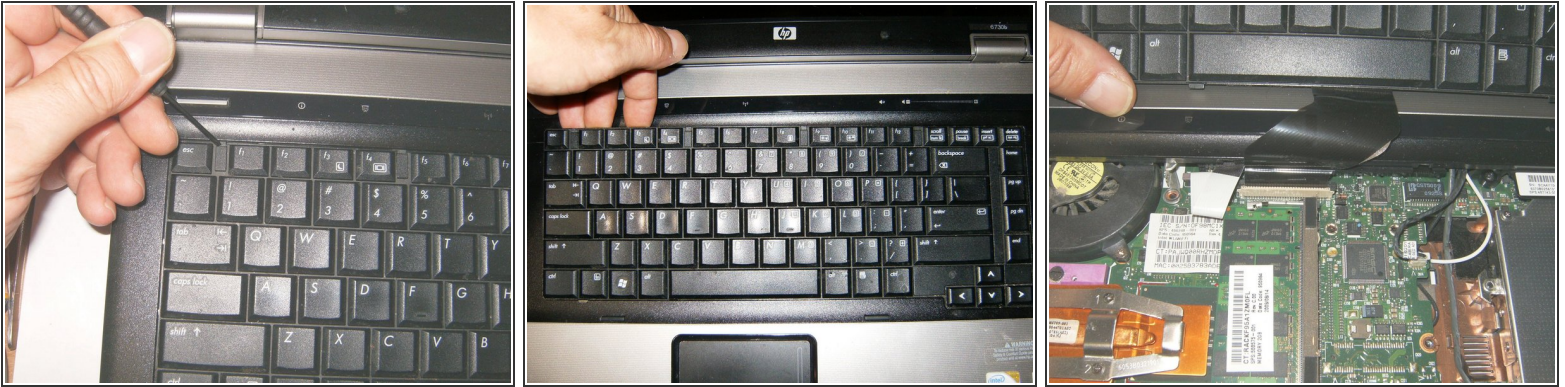
- [Phillips #0 Screwdriver](#) (1)
-

Step 1 — Switch Cover



- Shut down the computer. Disconnect all external devices connected to the computer. Disconnect the power from the computer by first unplugging the power cord from the AC outlet and then unplugging the AC adapter from the computer.
- Close the screen and turn the computer over. Loosen the three Phillips 2.5×9.0 captive screws that secure the keyboard to the computer. They are secured by a spring clip at the back, so they will not be easily removed. All that is required is to loosen those.
- Turn the computer display-side up, with the front toward you. Open the computer as far as possible. There are four retention tabs that hold the keyboard down.

Step 2



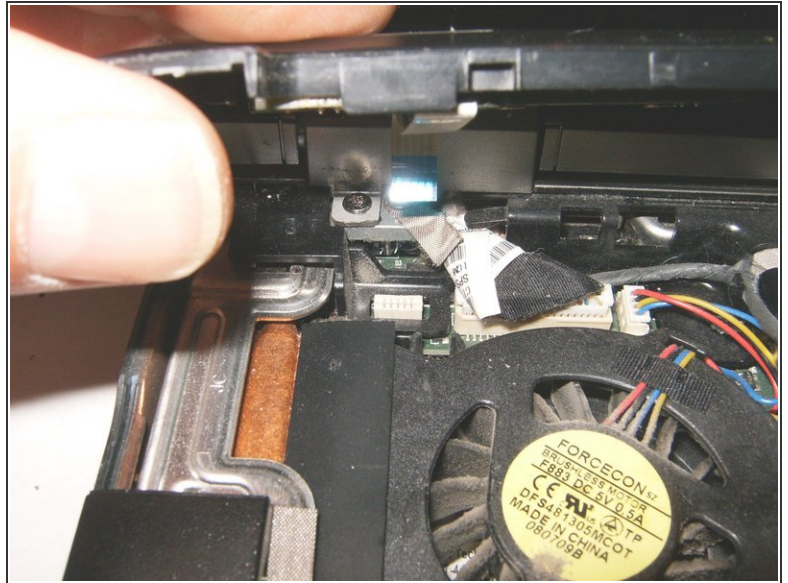
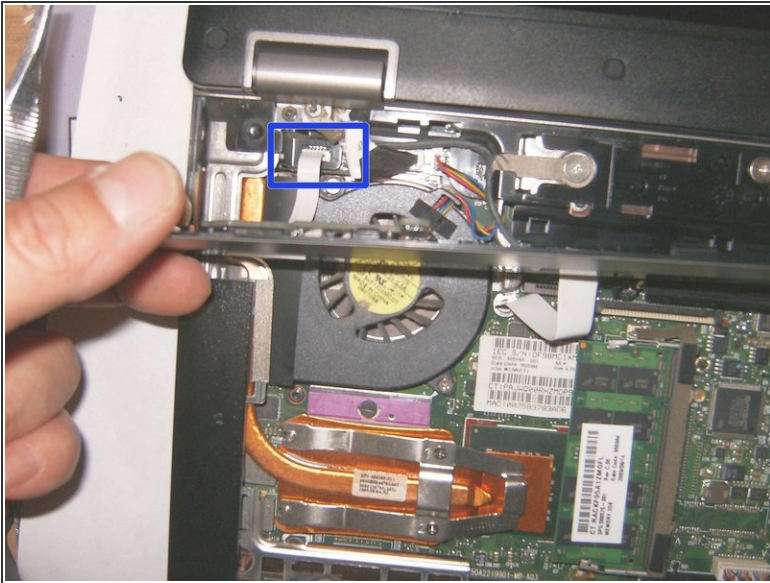
- Use a small screwdriver, or other instrument, to slide the four tabs in a downward direction toward the palmrest.
- Gently lift the keyboard up from the display side,
- and tilt it toward the front of the computer. Do not lift it up too fast or too high, the keyboard ribbon cable is still connected

Step 3



- Here is the keyboard ribbon cable seated in the zero insertion force (Zif) connector. The keyboard is now separated and can now be removed.
- Release the Zif connector to which the power button board cable is connected, by lifting the clasp of the Zif connector in an upward direction.
- Lift the left and right sides of the switch cover until it detaches from the computer, but do not yet try to remove it.

Step 4



- The LED board cable is still attached, disconnect it from the Zif connector by simply pulling it out in an upward direction.
- With both ribbon cables disconnected, remove the switch cover.

To reassemble your device, follow these instructions in reverse order.