



HP Compaq LE2202X Monitor Power supply board Replacement

This guide will show how to replace the power supply board in the the HP LE2202X monitor.

Written By: Chayton





TOOLS:

- [Phillips #1 Screwdriver](#) (1)
 - [Phillips #2 Screwdriver](#) (1)
 - [Spudger](#) (1)
 - [Metal Spudger](#) (1)
-

Step 1 — Power supply board



- Orient the monitor screen down on a table. Be careful the work surface is not going to damage the screen when laying flat.
- Remove the 4 12 mm screws from the base using a PH2 bit and driver.
- Make sure to hold the screen at the bezel when the last stand screw is removed, gently lay the monitor flush with the table after the stand is removed.

Step 2



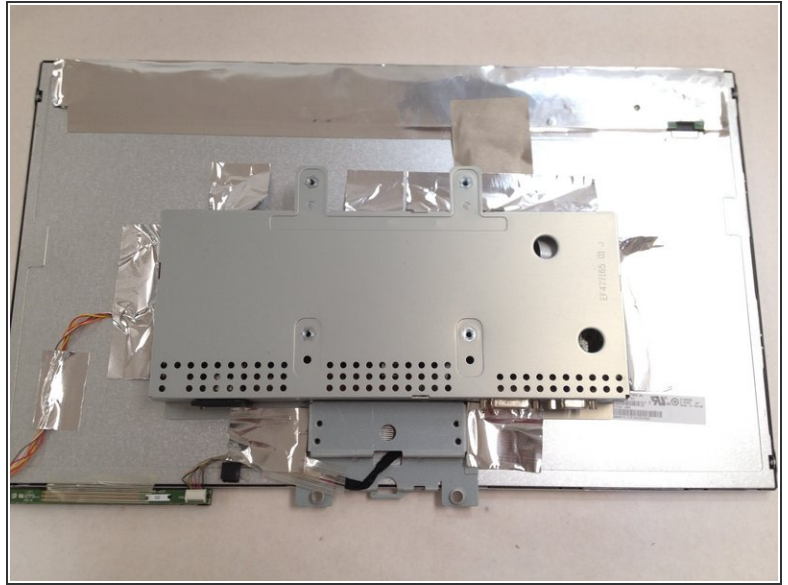
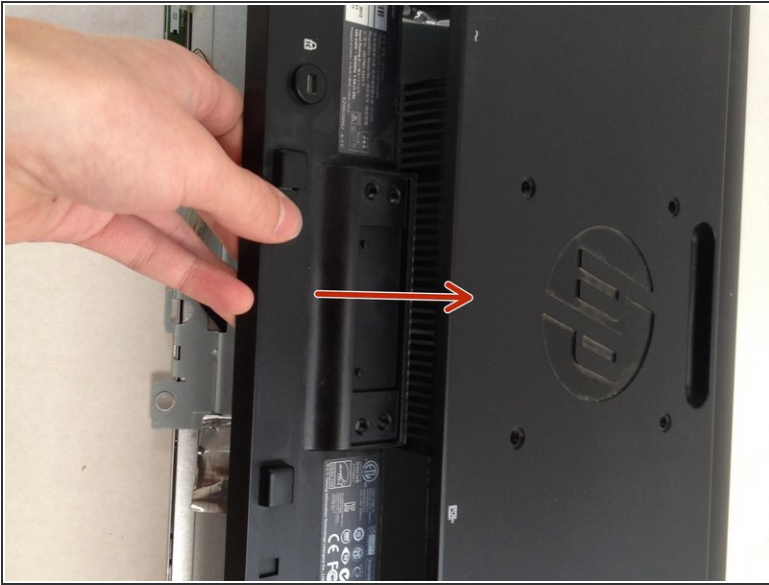
- With the monitor laying flush against a table remove the 12mm 1cm head screws using a PH1 bit.

Step 3



- Find the rectangular indentations in the front bezel. They are located to the right and left of the HP logo below the bezel.
- Using the plastic spudger insert it into the indentations and twist left and right like a screwdriver.
- ⓘ You should hear and physically see the separation of the front bezel and back case. If the above method does not work, use a metal spudger and more inward force.

Step 4



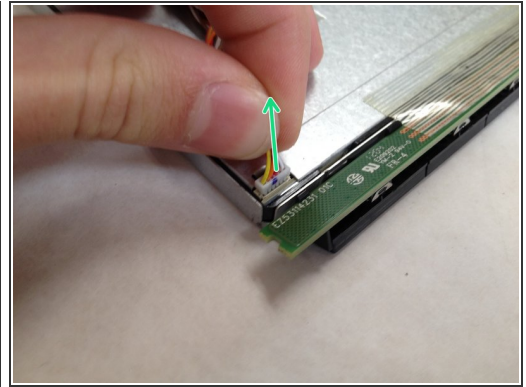
- Place the monitor screen down with the front bezel removed.
- ⚠ Hold the screen with the bezel when laying it flat because the screen is laying in the back case
- With the monitor laying flat lift up from where the stand originally was.

Step 5




- Peel back tape carefully, from all sides but not the top and where tape covers cables.
- Peel back aluminum tape carefully because it protects ribbon cable.

Step 6

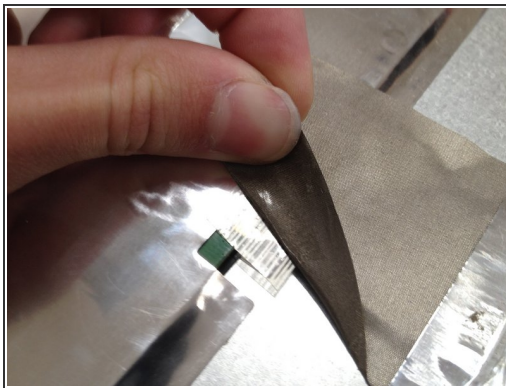
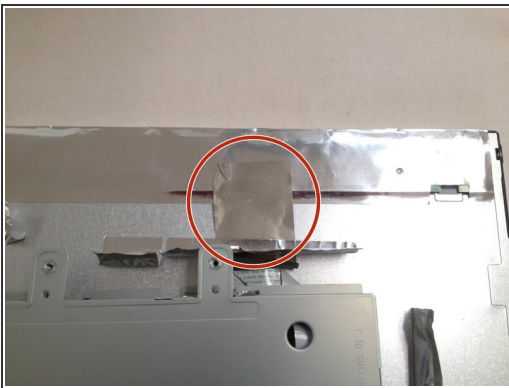


- Peel back tape from all visible cables.


 Do not pull too hard on the tape as there is a possibility the cables or connector could be damaged.

- Remove the interface cable from the buttons by pulling away from you with the monitor power port facing you.
- Remove the back light power cable by pulling up

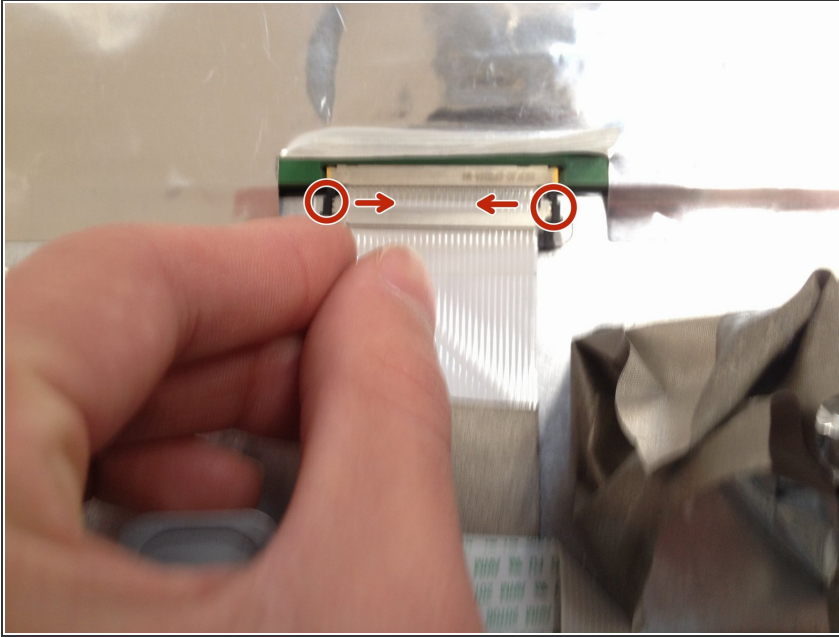
Step 7



- Locate the metal-cloth tape at the top of the monitor and slowly peel it back just enough to remove the ribbon cable connector.

 Don't pull too hard on the tape as you may damage the ribbon cable connector.

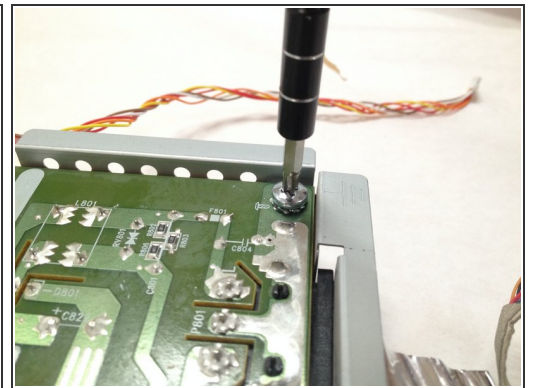
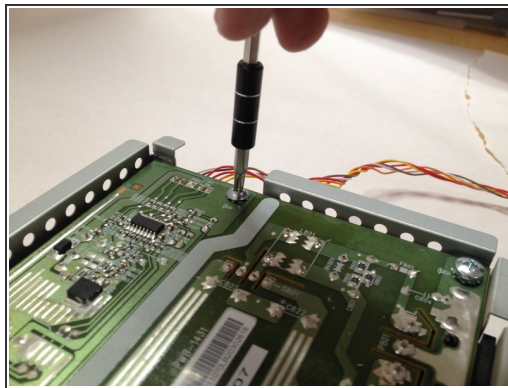
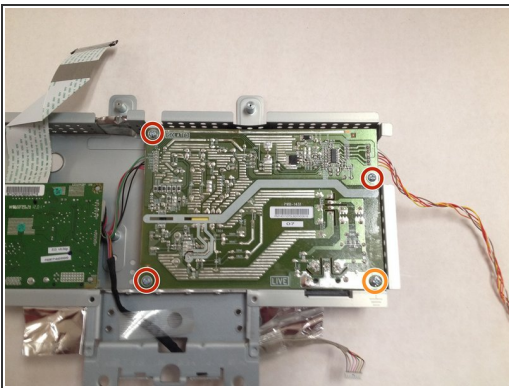
Step 8



- To remove the cable connector press in both levers towards the center.

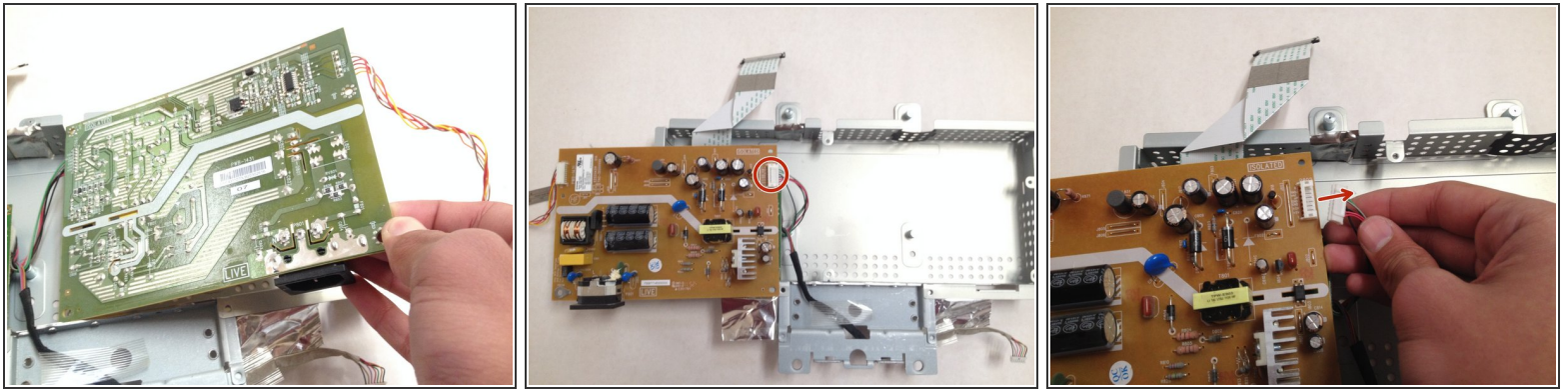
❗ If you are unable to press both at the same time, press one at a time and wiggle side to side until free.

Step 9



- With all tape and cables disconnected flip the case over to reveal the backs of the power supply and control boards.
- Remove the 3 10mm screws with a PH1 bit and driver.
- Remove the large grounding screw in the bottom left corner with a PH1 bit and driver.

Step 10



- Flip the power supply board over so the components are visible.
- ⚠ Mind the large capacitors in the middle of the board.
- Remove the cable connecting to the logic board and lift the power supply board away.

To reassemble your device, follow these instructions in reverse order.