



HP Compaq Presario CQ56-110US Repair Wi-Fi Card Replacement

Use this guide to fix wireless connectivity issues by replacing the defective wifi card on the HP Compaq Presario CQ56-110US laptop.

Written By: Blannette Baltimore



INTRODUCTION

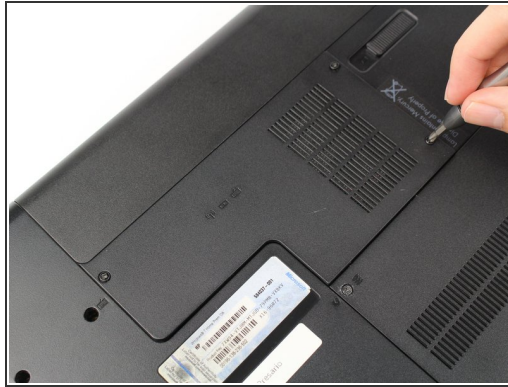
Use this guide to fix wireless connectivity issues by replacing the defective wifi card.



TOOLS:

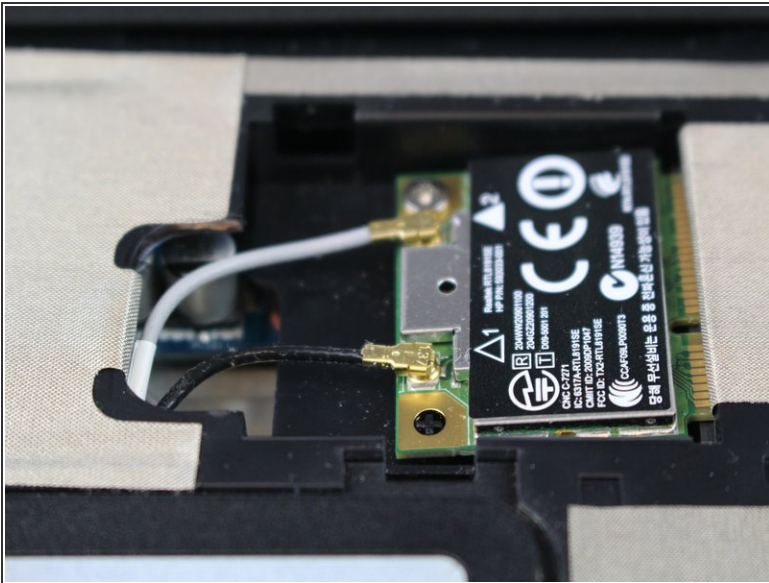
- [Phillips Head Screwdriver: Size PH1](#) (1)
 - [iFixit Opening Tools](#) (1)
-

Step 1 — Wi-Fi Card



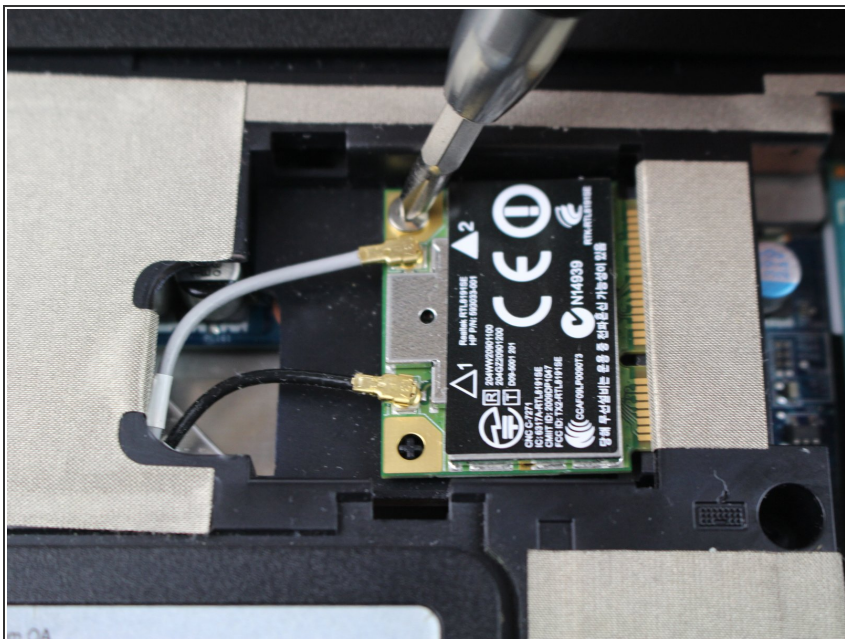
- Use a Phillips screwdriver with a PH1 bit to loosen the three indicated screws.
- ⓘ The screws do not come free from the panel. They only need to be loosened enough so that the panel can be lifted/pried using a plastic opening tool.

Step 2



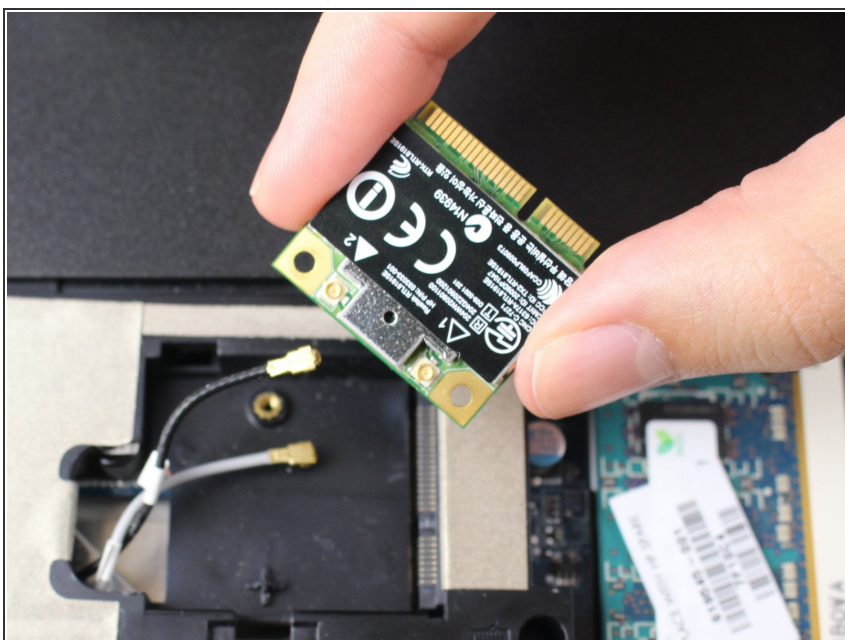
- Gently pull the black and white cables to disconnect them from the Wi-Fi card.

Step 3



- Use the same screwdriver to remove the two 3 mm screws holding the card in place.

Step 4



- Lift the Wi-Fi card to remove it from the slot.

To reassemble your device, follow these instructions in reverse order.