



HP Compaq Presario V3000 Hard Disk Drive Replacement

This guide will assist you in removing the hard drive of you notebook device.

Written By: Ricky Jaimez



INTRODUCTION

Removing the hard drive is required when the drive will no longer boot or when you want to upgrade to a larger capacity drive. This task can seem difficult, but is not as bad as you may think! Using a magnetic project mat to hold and label the screws will come in handy during this replacement.

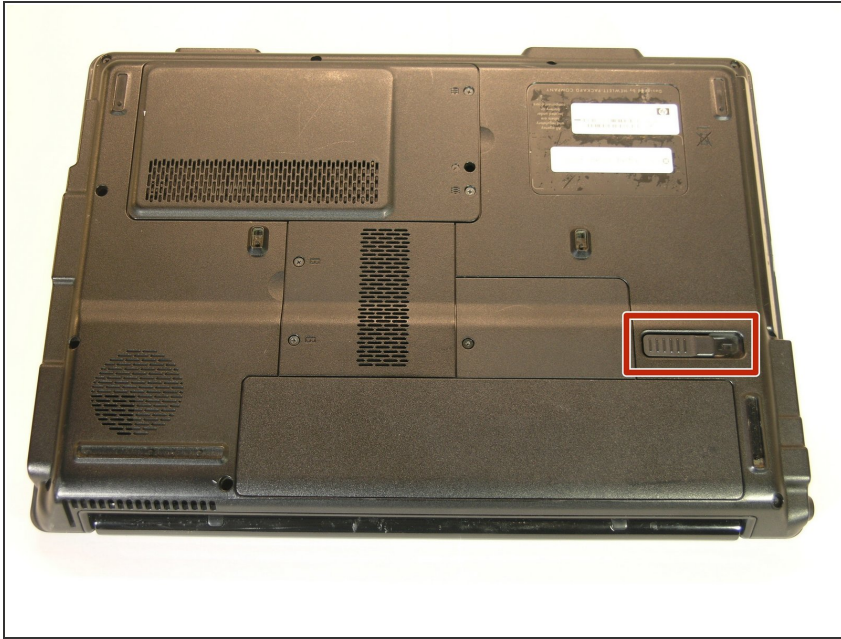
CAUTION: Always unplug the device from the power source or wall outlet before beginning any replacement work.



TOOLS:

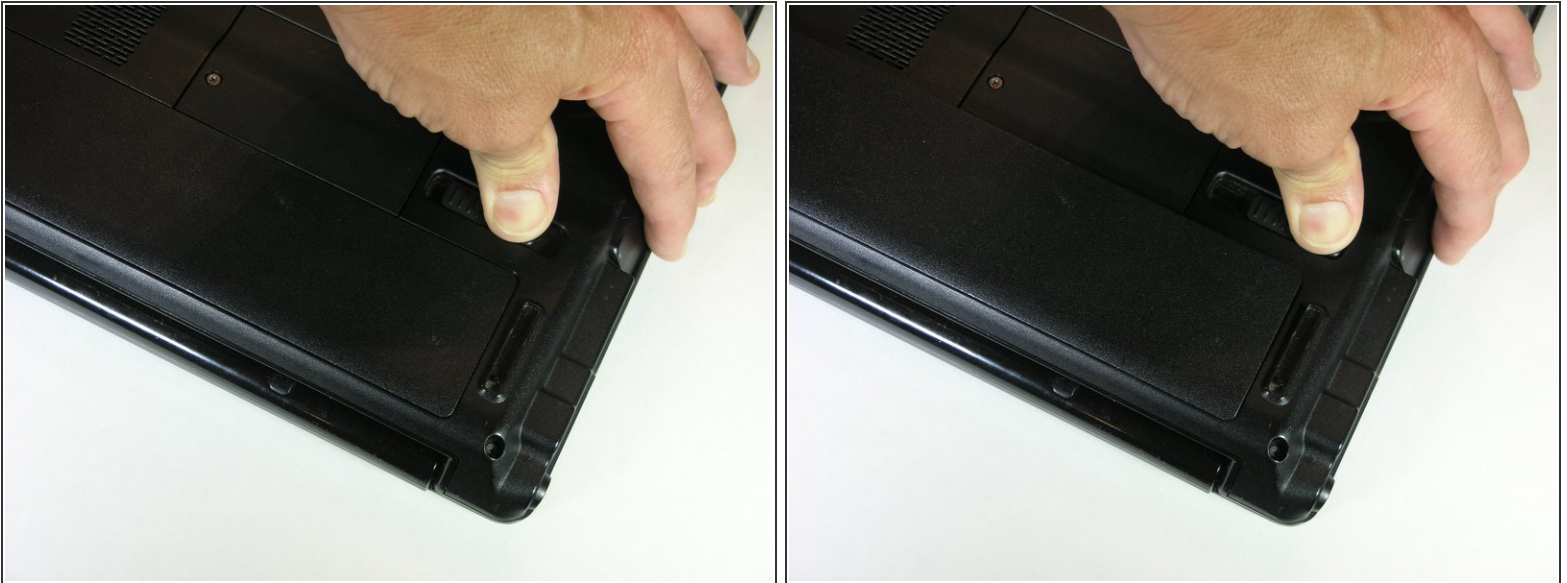
- [Phillips #0 Screwdriver](#) (1)
 - [Magnetic Project Mat](#) (1)
-

Step 1 — Battery



- Make sure the laptop is powered OFF. Gently turn the laptop over and place it on a flat surface.
- ⚠ The battery may be warm or even HOT to the touch.
- Locate the battery **EJECT** latch.

Step 2



- Grab the laptop firmly on the side and using your thumb, press the eject latch towards the **OUTER** edge of the device.
- The battery will be lifted out of the laptop slightly as you press the latch over as far as it will go.
- ☑ When replacing the battery, you **DO NOT** need to adjust the latch. Once the battery is replaced, snap it into place and the latch will return to normal.

Step 3



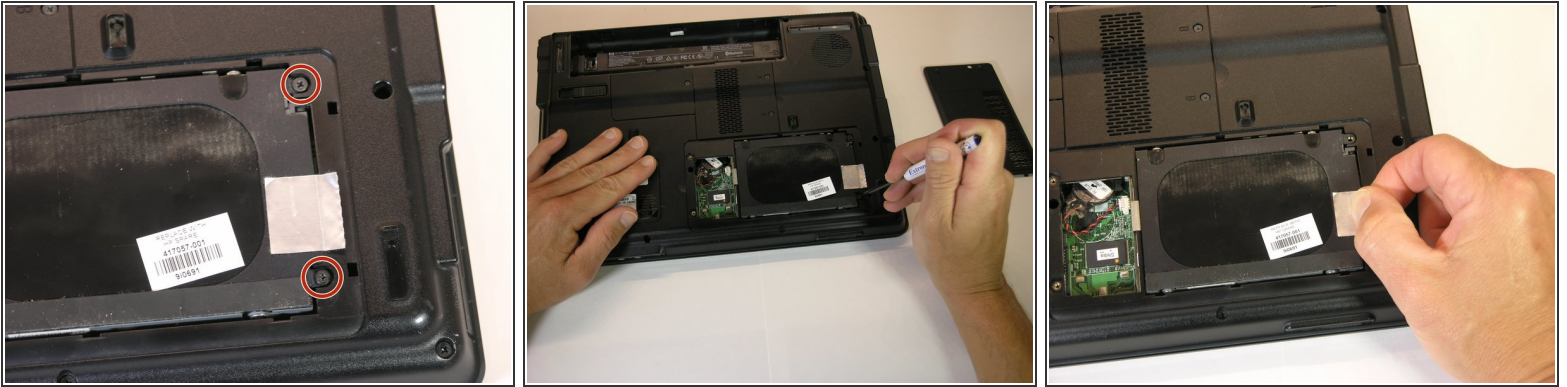
- Pull the battery up and towards you to remove it from the laptop chassis.
- Once the battery is out, you will be able to check the battery label for the replacement part number.
- ❗ The part number is needed when purchasing a new battery.

Step 4 — Hard Disk Drive



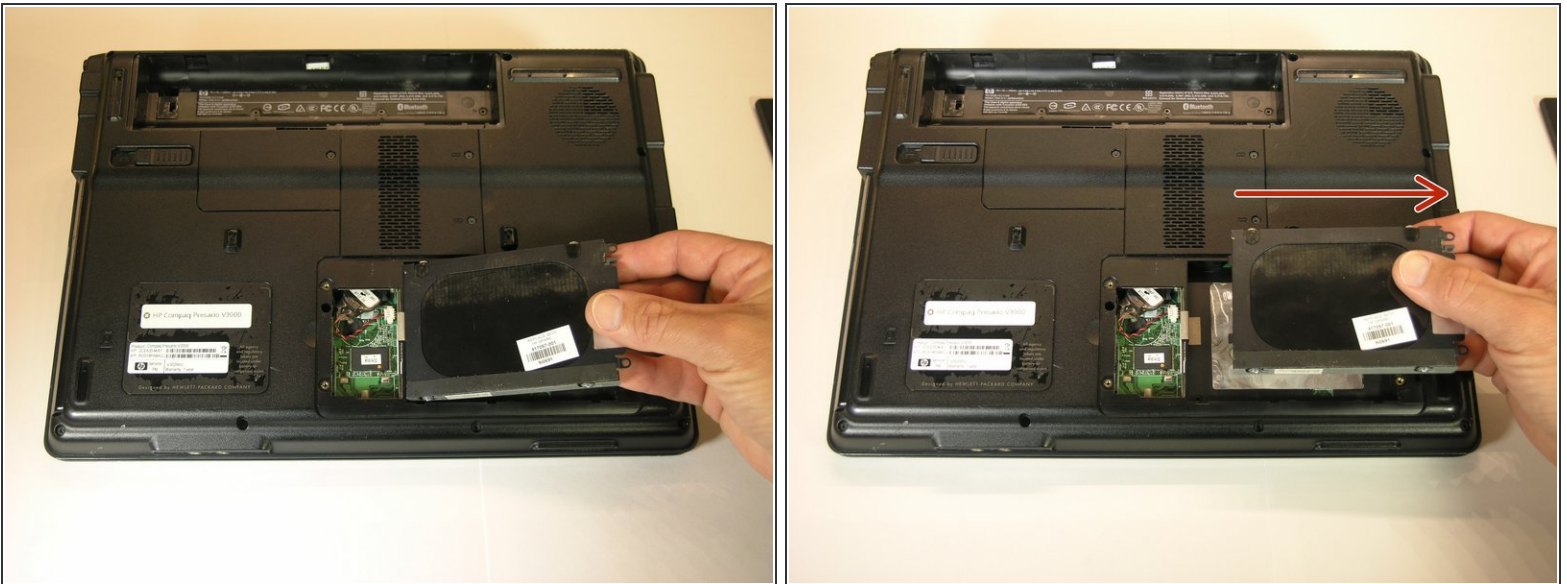
- Remove the two Phillips #0, 2.0×5.0 mm hard drive access cover screws. Do not remove them fully. The screws will stay in place on the cover plate.
- Lift the access cover off and place it to the side out of your way.

Step 5



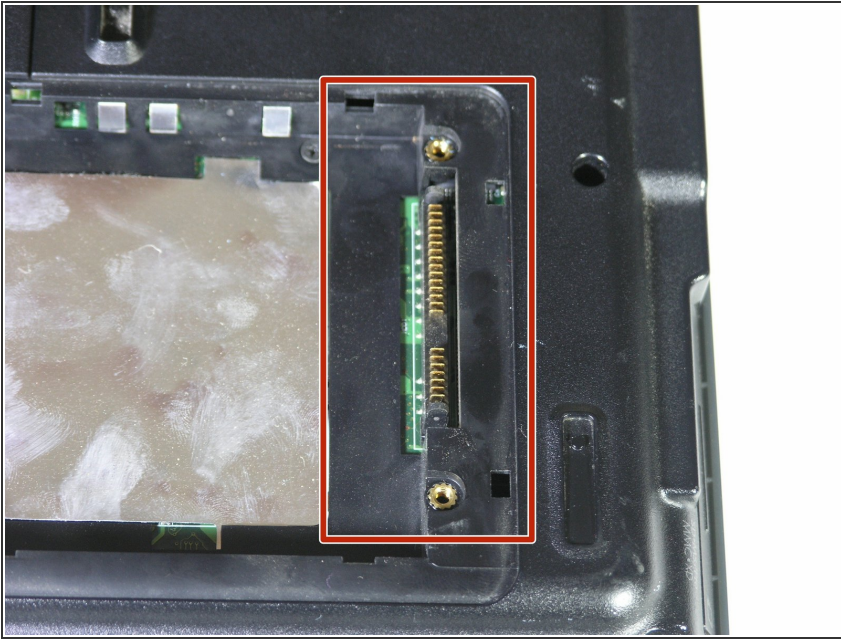
- Remove the two Philips #0 2.5X5.0 mm screws and set them aside.
- Pull the silver tab back and up to remove the hard drive from the laptop.

Step 6



- Lift the hard drive up from the laptop. Be careful not to lift it all the way.
 - Gently pull the hard drive away from the edge in the direction of the arrow.
- ⚠ There are two plastic clips on the hard drive case that insert into the laptop that may break if you lift the hard drive up too far and too fast.

Step 7



- ⓘ Check the hard drive connections inside the laptop casing. Make sure that they are clean from dust or debris and are straight.

To reassemble your device, follow these instructions in reverse order.