



HP DV7-4285DX LCD Replacement

This guide will show how to disassemble the laptop and get to the display assembly to replace LCD screen.

Written By: Patrick



INTRODUCTION

This guide will show how to disassemble the laptop and get to the display assembly to replace LCD screen.



TOOLS:

- [Phillips #1 Screwdriver](#) (1)
- [Phillips #0 Screwdriver](#) (1)
- [Phillips #00 Screwdriver](#) (1)
- [Spudger](#) (1)
- [Metal Spudger](#) (1)
- [iFixit Opening Tools](#) (1)



PARTS:

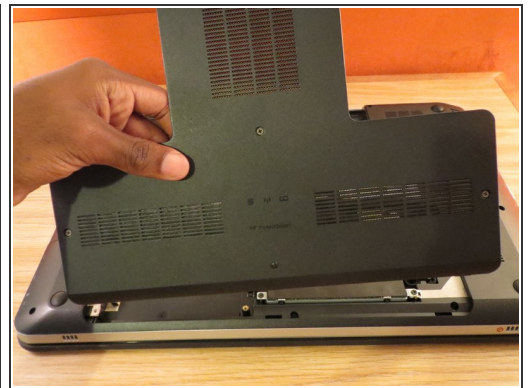
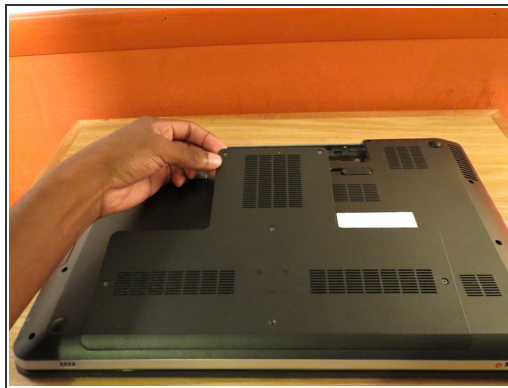
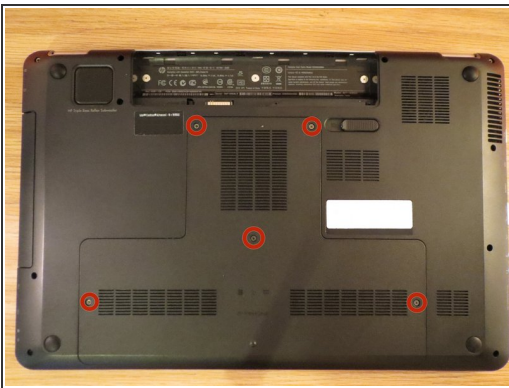
- [replacement LCD screen](#) (1)
17.3" WXGA++

Step 1 — Battery



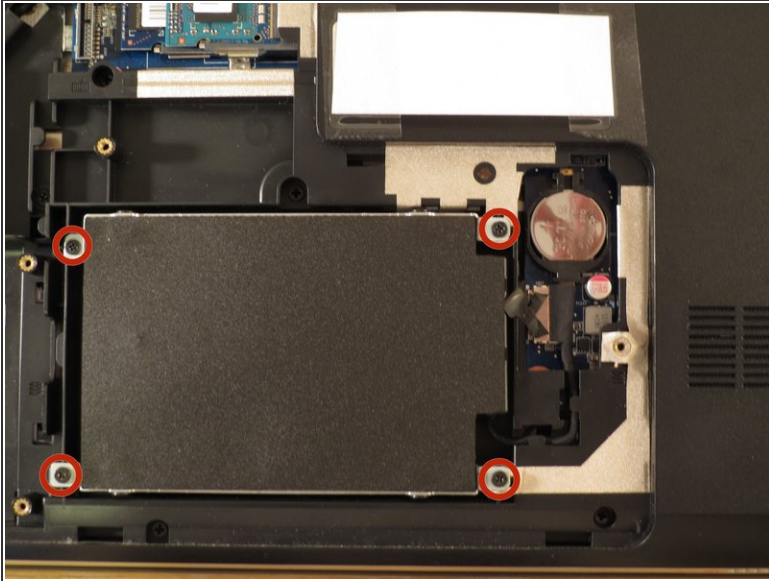
- Make sure laptop is shutdown and unplugged from power adapter.
- Slide the battery release latch to the left and remove the battery.

Step 2 — Bottom Cover



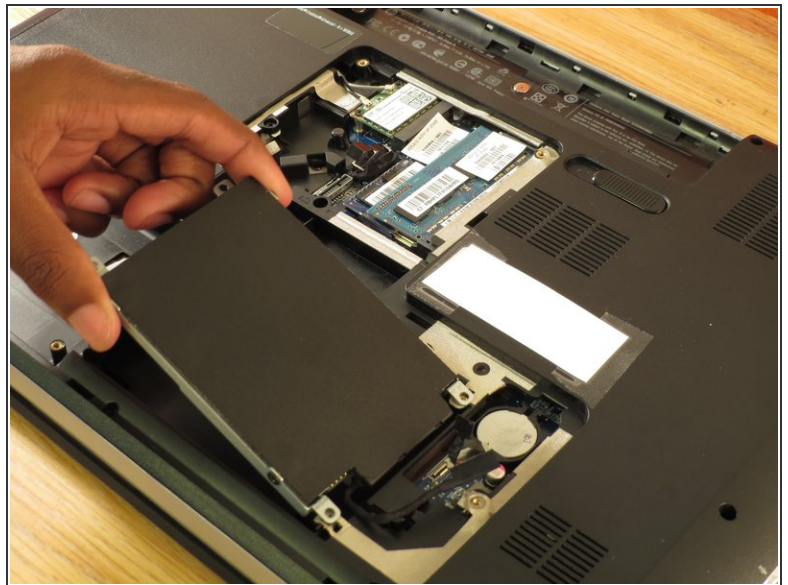
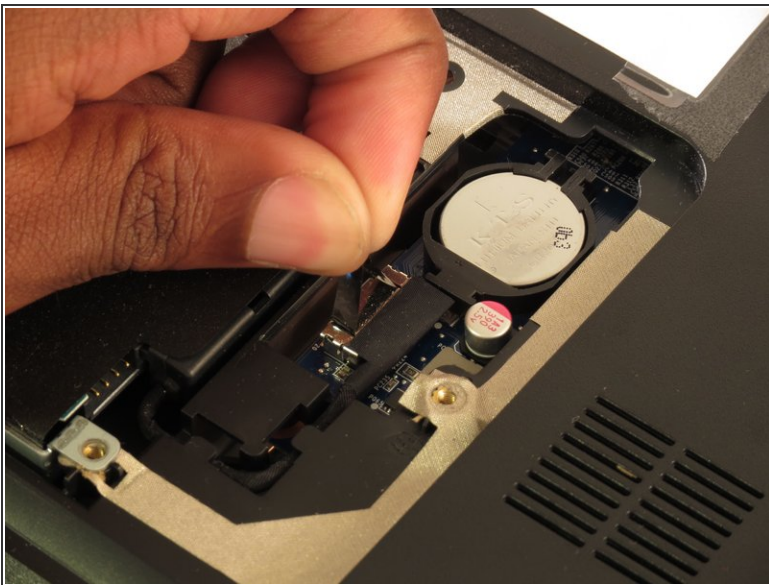
- Unscrew the five screws holding the bottom cover for accessing the RAM, hard drive and wifi card.
 - Five Phillips #1
- When removing the cover, start from the top edge and lift up.
- Remove cover.

Step 3 — Hard Drive



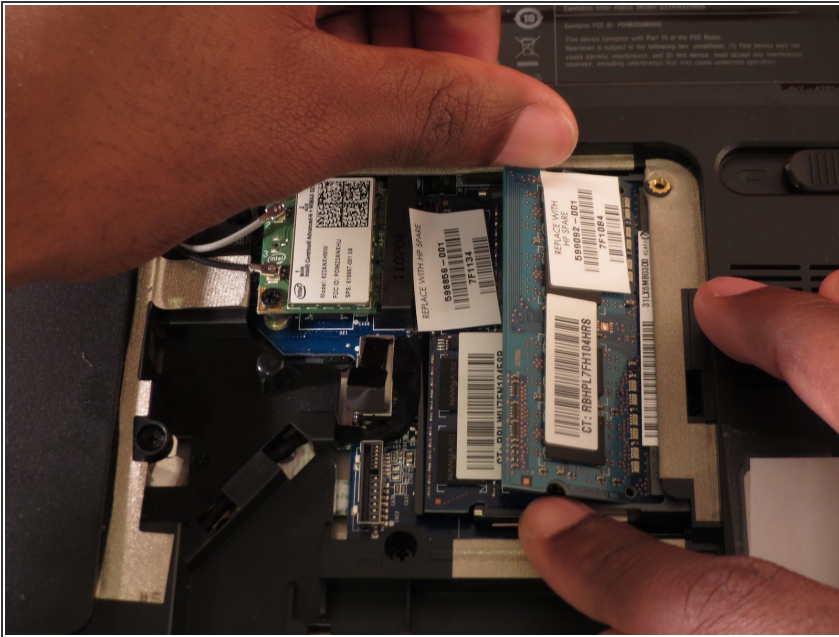
- Remove the four screws holding the hard drive.
 - Four Phillips #1

Step 4 — Hard Drive



- Unplug the SATA connection using the black pull tab.
- Remove hard drive

Step 5 — RAM



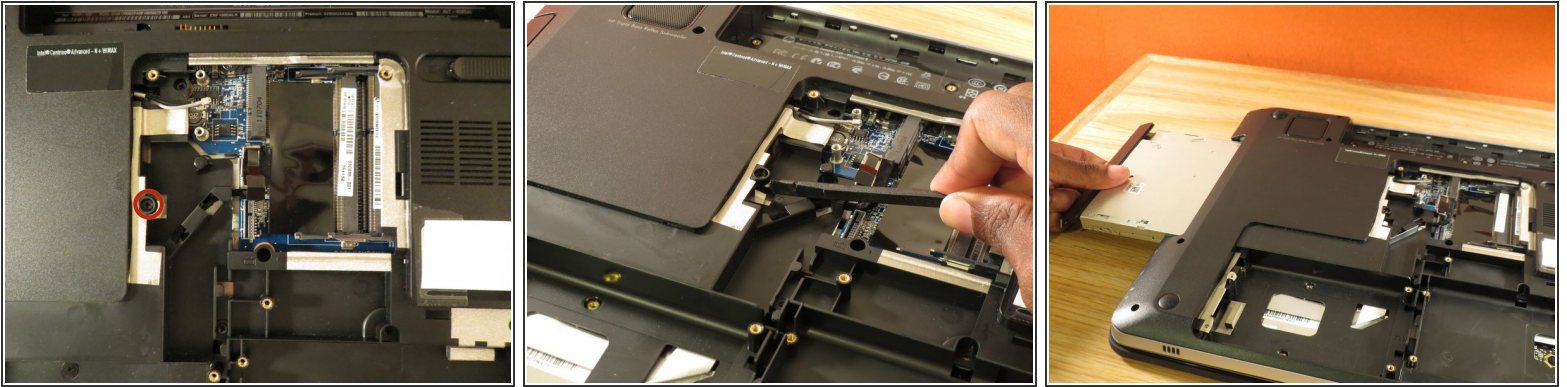
- Remove RAM by pushing the locking clips outwards.

Step 6 — Wireless Card



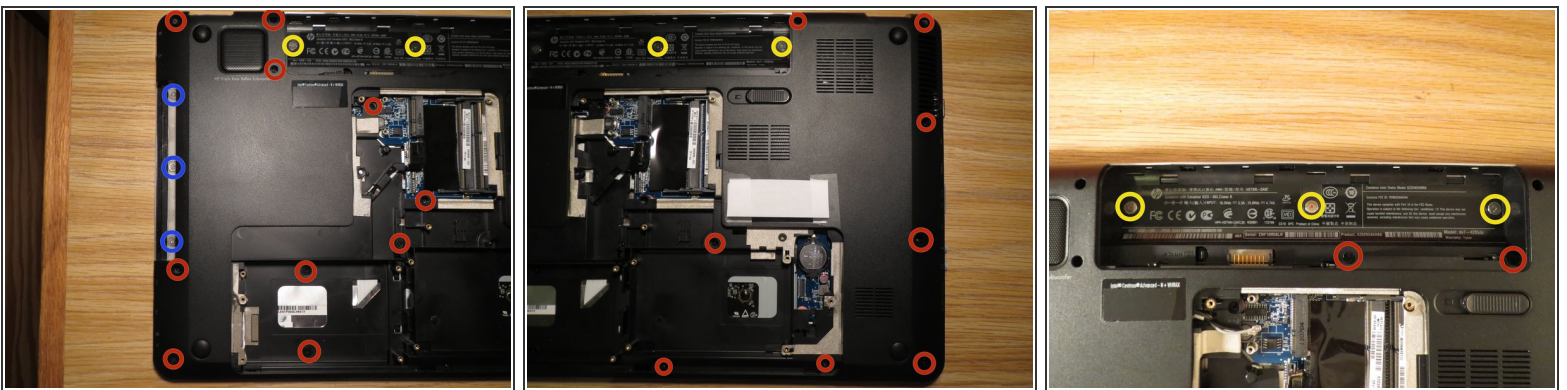
- Use the edge of a plastic opening tool to pry the wifi antenna cable up from its socket on the wireless card.
- Remove two screws from wireless card.
 - Two Phillips #1

Step 7 — Optical Drive



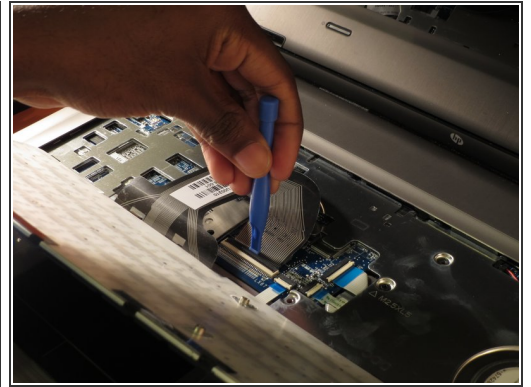
- Remove the one screw holding the optical drive.
 - One Phillips #1
- Use a spudger to push on the metal tab below where the screw was. This should disconnect the optical drive from the SATA connector.
- Remove optical drive.

Step 8



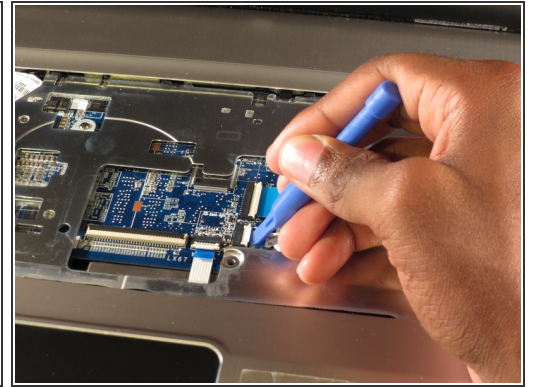
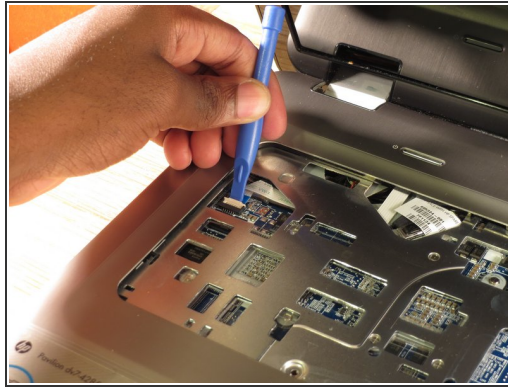
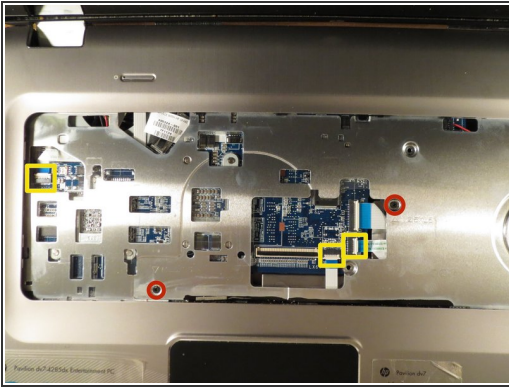
- Remove the 26 screws on the bottom.
 - 20 Phillips #1
 - Three Phillips #0
 - Three Phillips #00

Step 9 — Keyboard



- To the left of the battery connector is a keyboard release latch. Use a spudger to release the keyboard.
 - ⓘ You may have to open the laptop some to keep the keyboard from re-latching.
- Once freed, lift the keyboard up from the top.
 - ⚠ Be careful not to damage or tear the ribbon cable.
- Use the edge of a plastic opening tool to carefully flip up the retaining flap on the keyboard ZIF socket.
- Remove keyboard.

Step 10



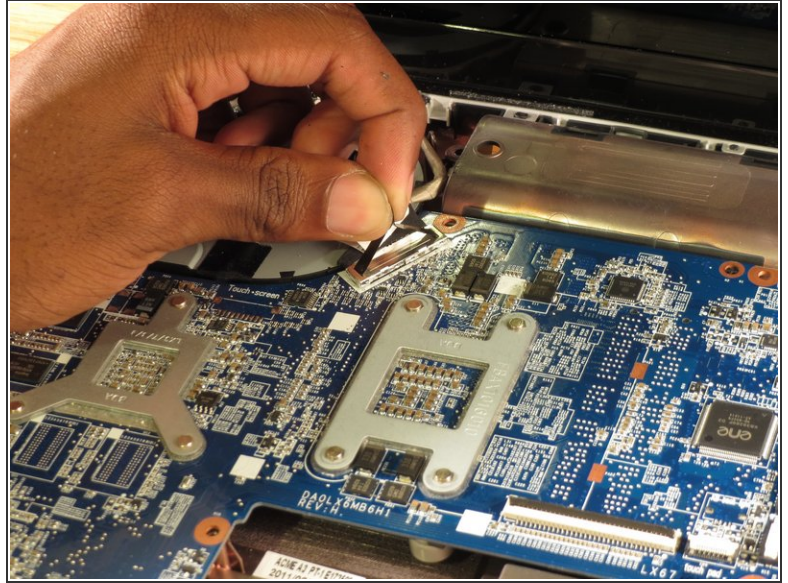
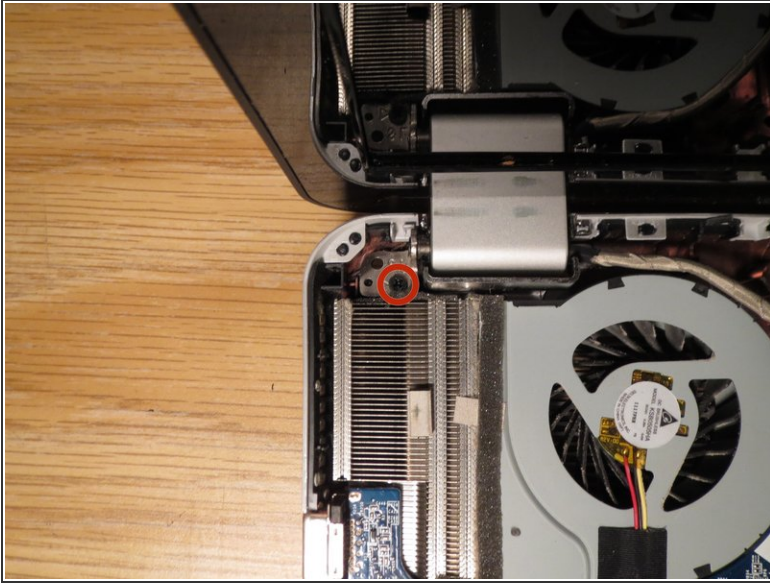
- Remove the two screws.
 - Two Phillips #1
- Use the edge of a plastic opening tool to carefully flip up the retaining flaps on the three ZIF sockets.

Step 11



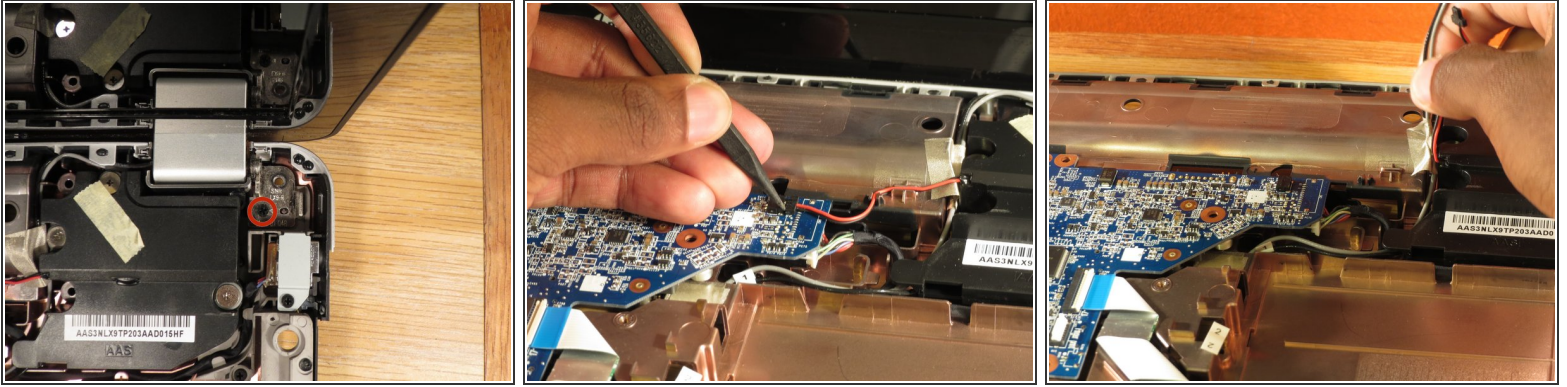
- Starting on the left side, use a spudger to pry the cover up. Work your way around to the right side.
- Remove cover.

Step 12



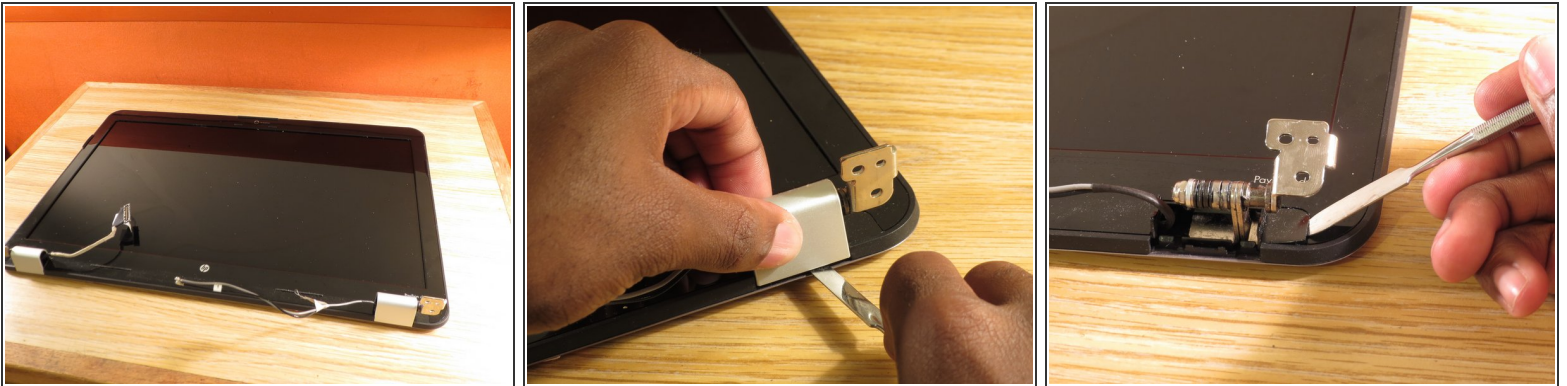
- Remove the screw on the left side holding the lid hinge.
 - One Phillips #1
- Use the black pull tab to remove the LCD connector.

Step 13



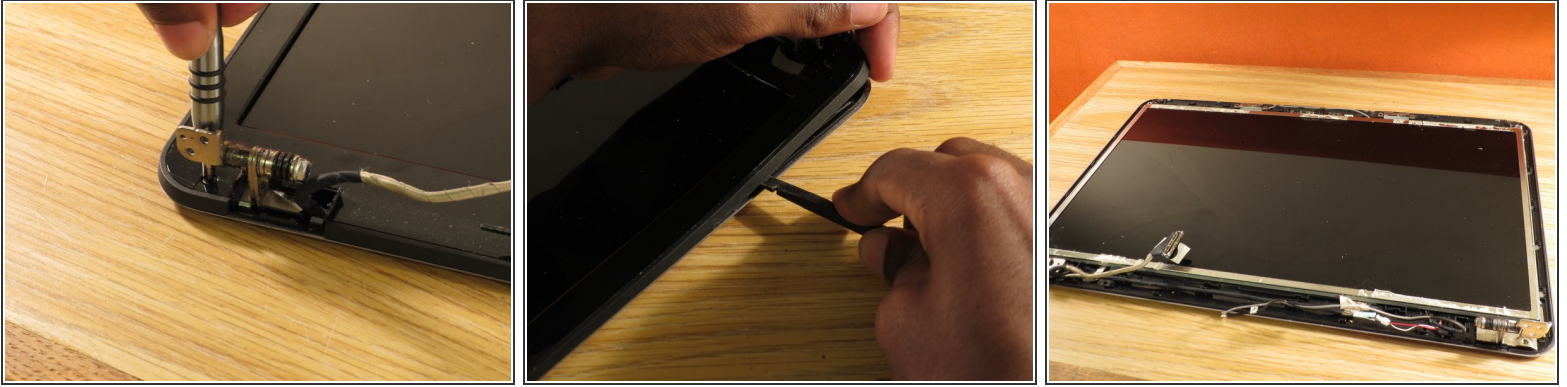
- Remove the screw on the right side holding the lid hinge.
 - One Phillips #1
- Use a spudger to disconnect the speaker wire.
- Carefully pull the wifi antenna wires out from the bottom case.
- Remove lid.

Step 14



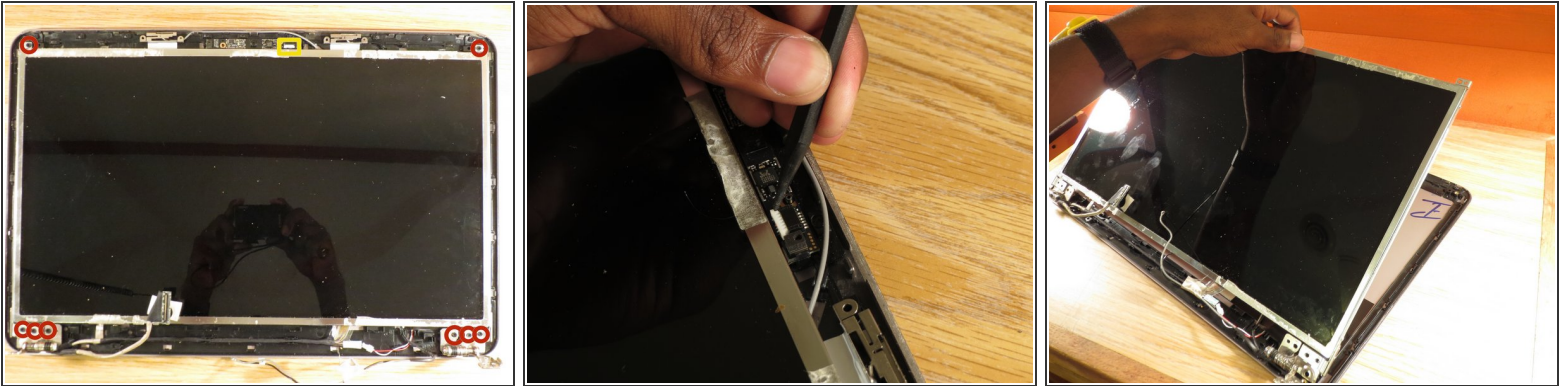
- Using a metal spudger remove the two hinge covers.
- Use a metal spudger to remove the two screw covers.

Step 15



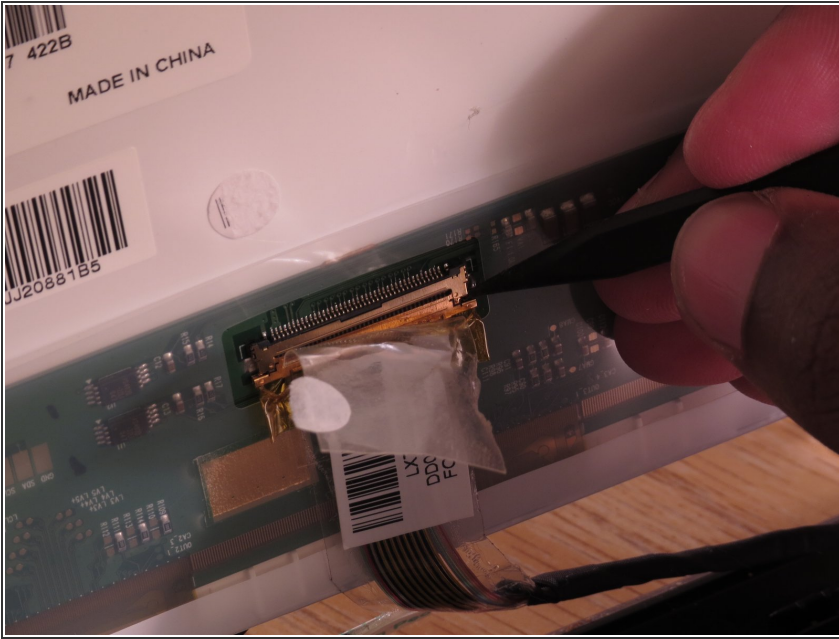
- Remove the two Phillips #1 screws that were under the covers.
- Starting on the left side, use a spudger to pry the bezel up.
- Work your way around and remove the bezel.

Step 16



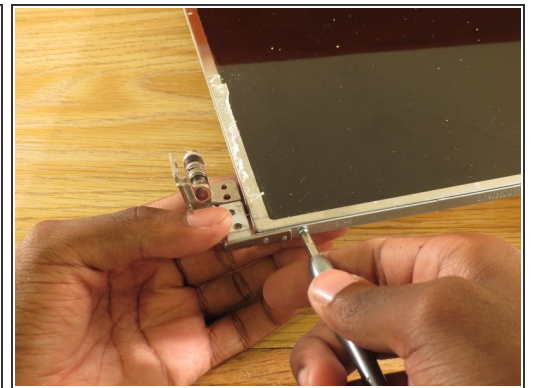
- Remove the eight screws holding the LCD panel.
 - Eight Phillips #1
 - Use a spudger to disconnect the webcam connector.
 - Lift up the LCD panel.
- ⚠ The webcam wire is attached to the back of the panel. Carefully peel it off the panel.

Step 17



- Use a sudger to disconnect the wire from the LCD panel.
- Remove LCD panel.

Step 18



- Remove the four screws (two on each side) holding the hinges on the sides.
 - Four Phillips #1 (two on each side)
- Remove the hinges.

Step 19



- LCD remains.
- To reassemble, follow these instructions in reverse order.

To reassemble your device, follow these instructions in reverse order.