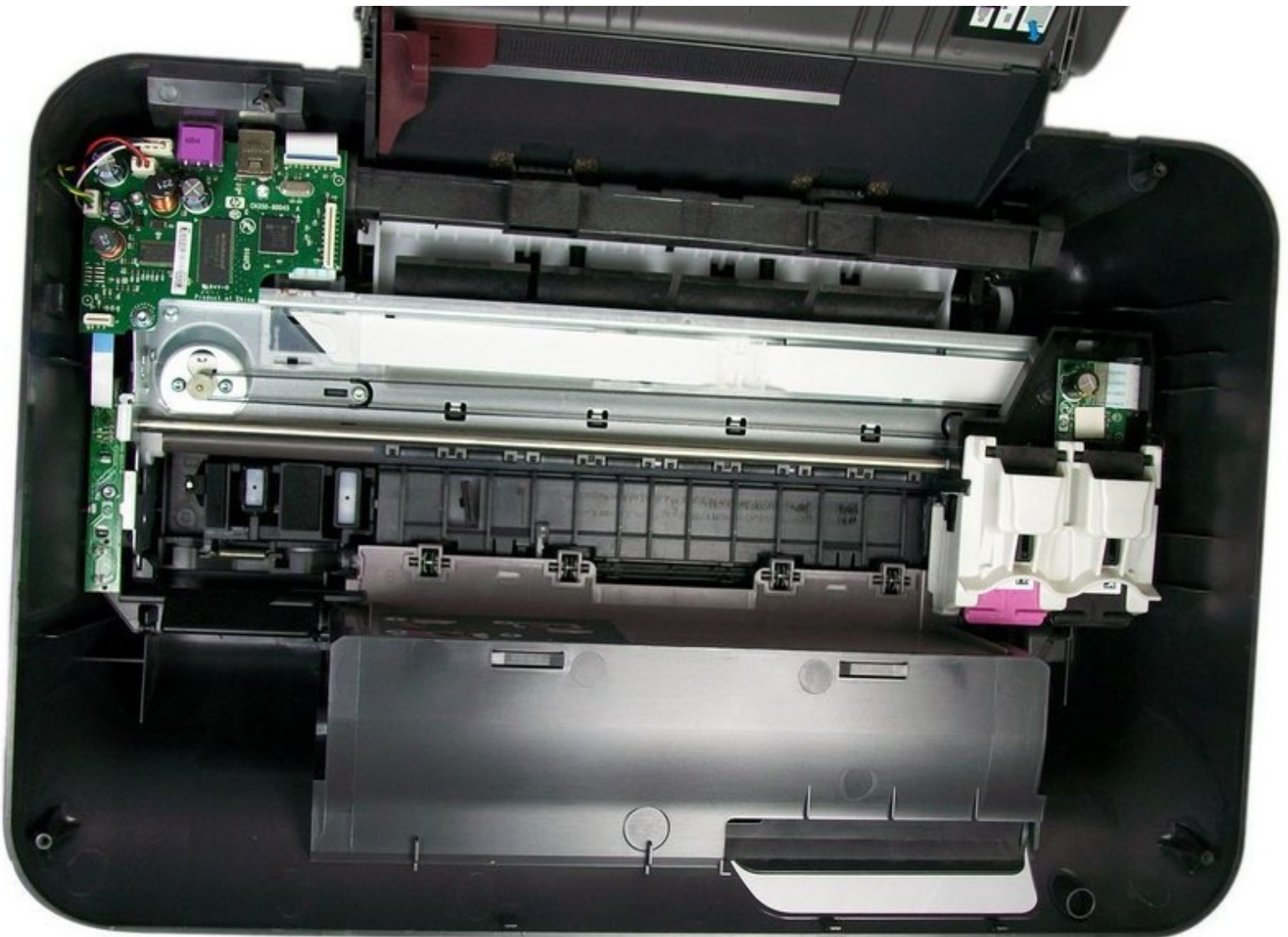




# HP Deskjet 1055 Motherboard Replacement

Follow these steps in order to replace your printer's all-important motherboard.

Written By: Daniel



---

## INTRODUCTION

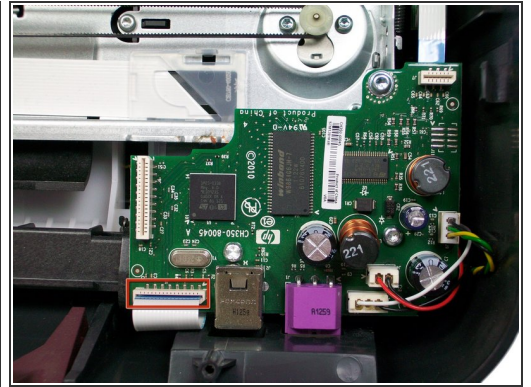
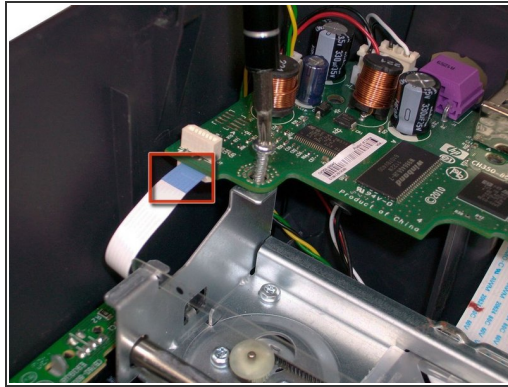
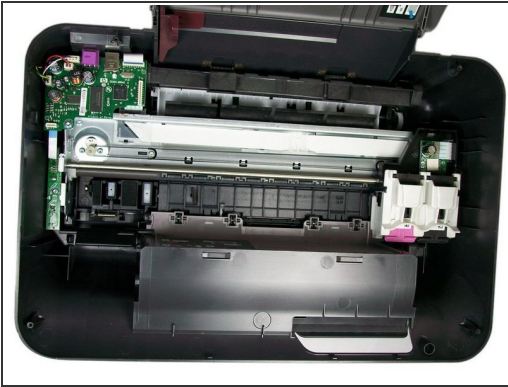
The motherboard is a vital component of the printer. A motherboard replacement is often a final solution in order to fix the printer and must be handled with care.



### TOOLS:

- [T10 Torx Screwdriver](#) (1)
-

## Step 1 — Motherboard



- Turn off the printer then open the top lid in order to see the inside of the printer.
- ⚠ Wait at least 15 minutes after turning off the printer before handling the motherboard.
- After waiting 15 minutes, locate the blue tabs and gently pull them out of their sockets.

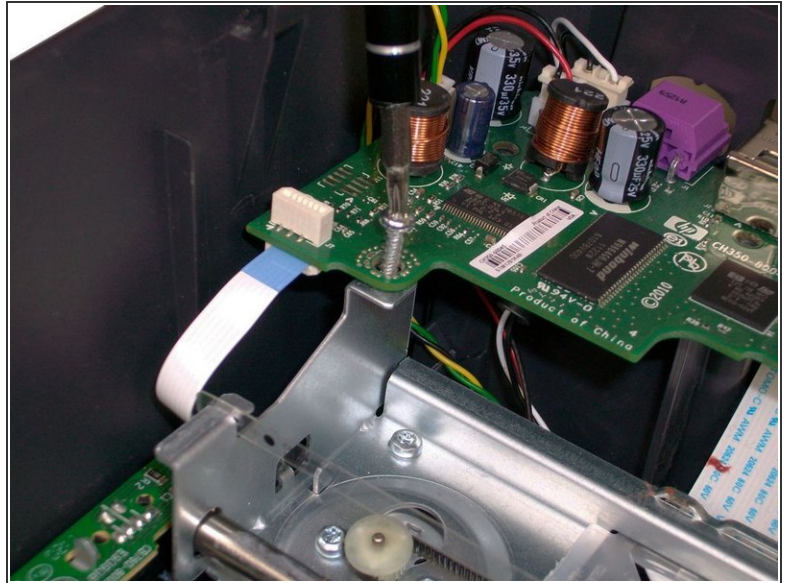
## Step 2



- Locate the three white plugs with wires attached to them. Gently grab the sides of the white chorded plugs and pull them out of their socket.

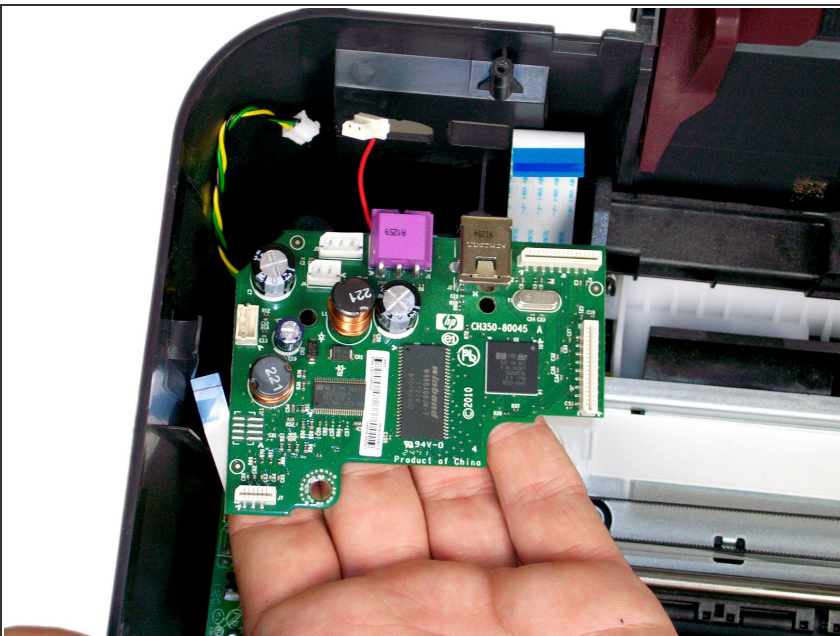


### Step 3



- Using a T-10 Torx screwdriver, unscrew the three 1/2" screws on the motherboard.
- ⓘ Note which screws were taken out of their specific spot because they must be placed back to their original spot.

### Step 4



- Carefully pull the motherboard out of the printer.

In order to reassemble your device, follow these instructions in reverse orders