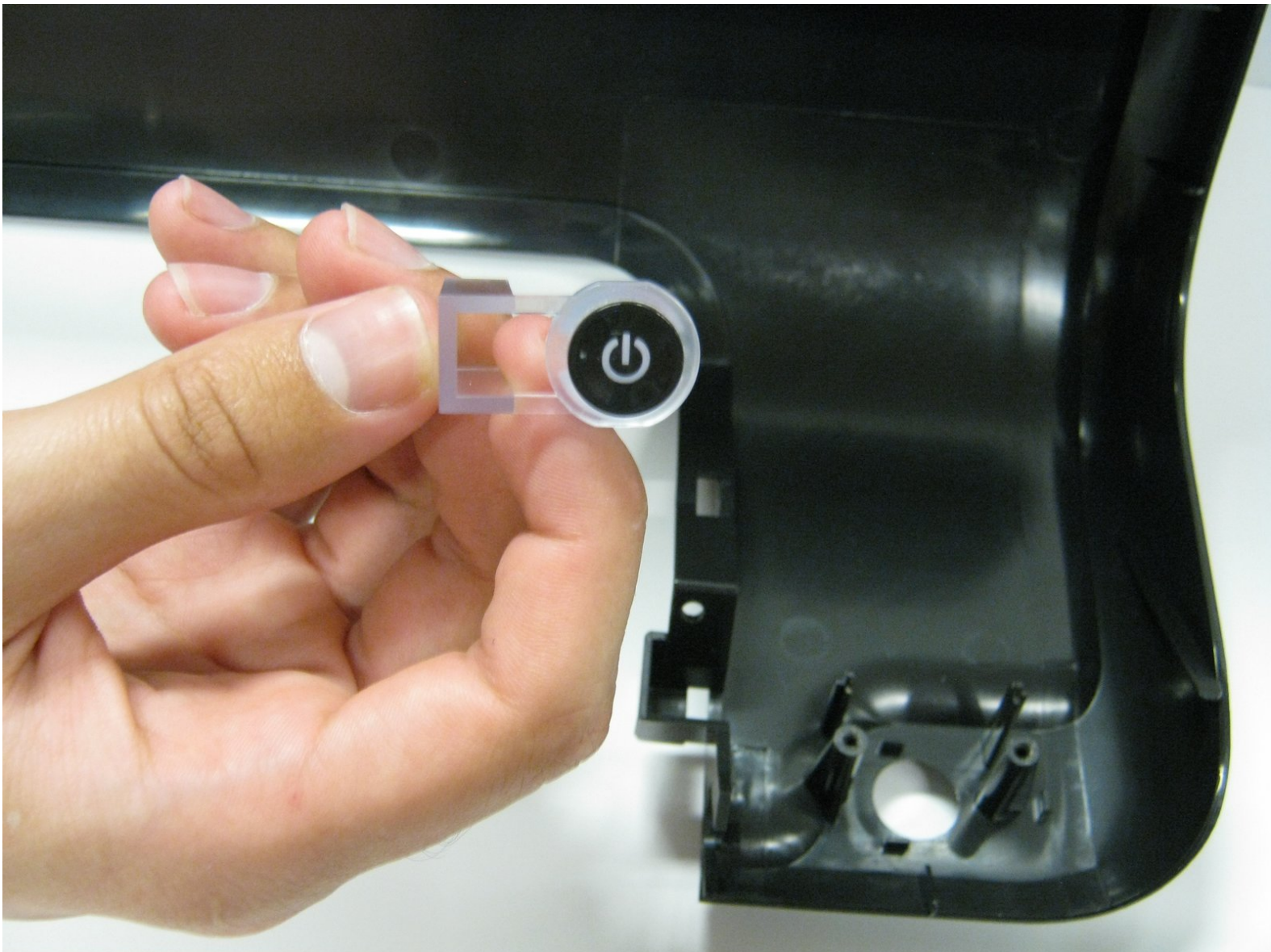




HP Deskjet D1660 Power Button Replacement

Replace the power button so that the printer will actually turn on.

Written By: Justin Taiki Fukada



INTRODUCTION

Does the printer button not work or stay on when you are trying to turn the printer off? Use this guide to replace the malfunctioning button. This will ensure that you have a working printer that will actually print.



TOOLS:

- [T10 Torx Screwdriver](#) (1)
-

Step 1 — Top Cover



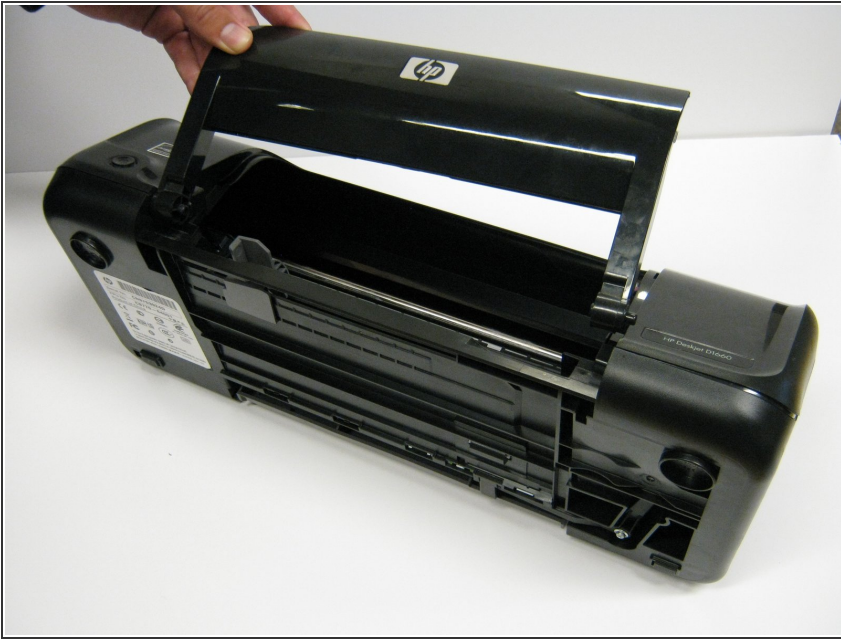
- Remove the back two 14.0 mm Torx #10 screws.

Step 2



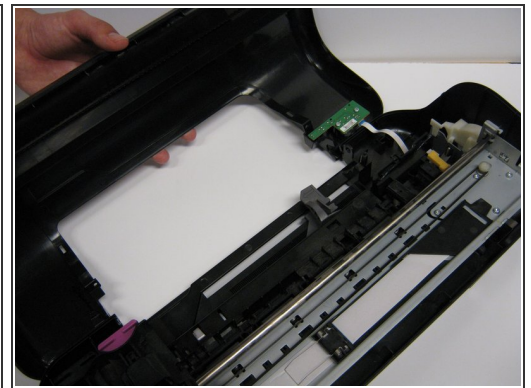
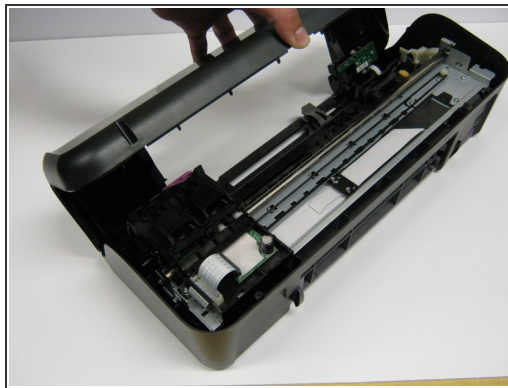
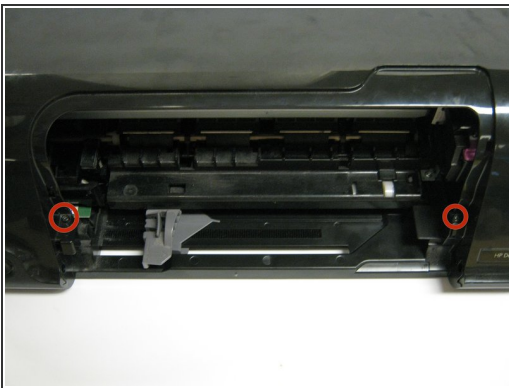
- Lay the printer on its back.
- Grab the paper tray by its right side and pull it to the left and up.

Step 3



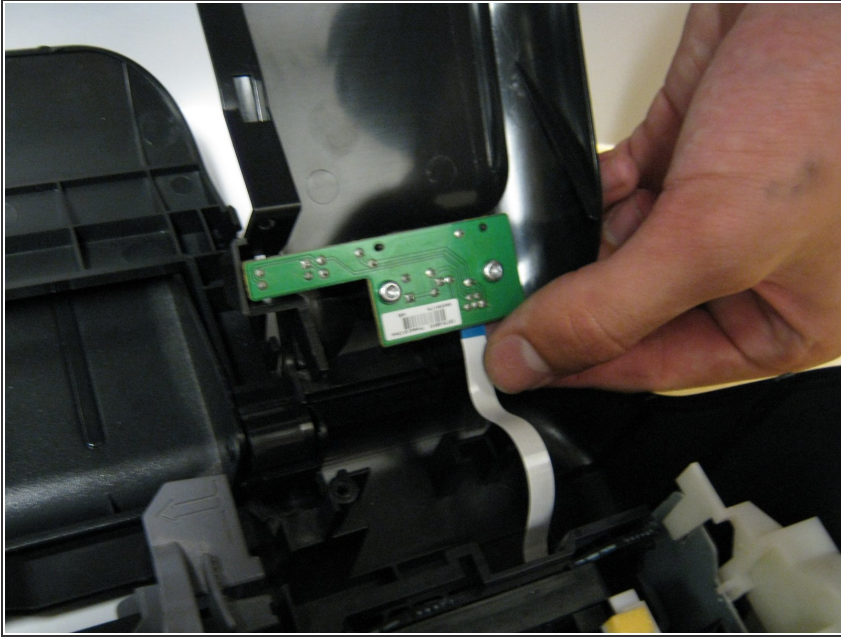
- Open the frontal access panel by lifting it from the top.
- Similar to the paper tray, grab it from the right side and pull it to the left and up.

Step 4



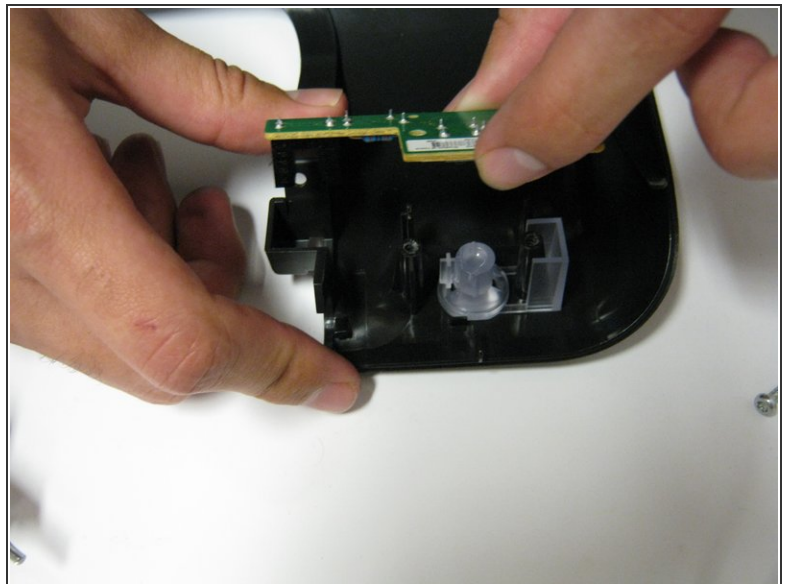
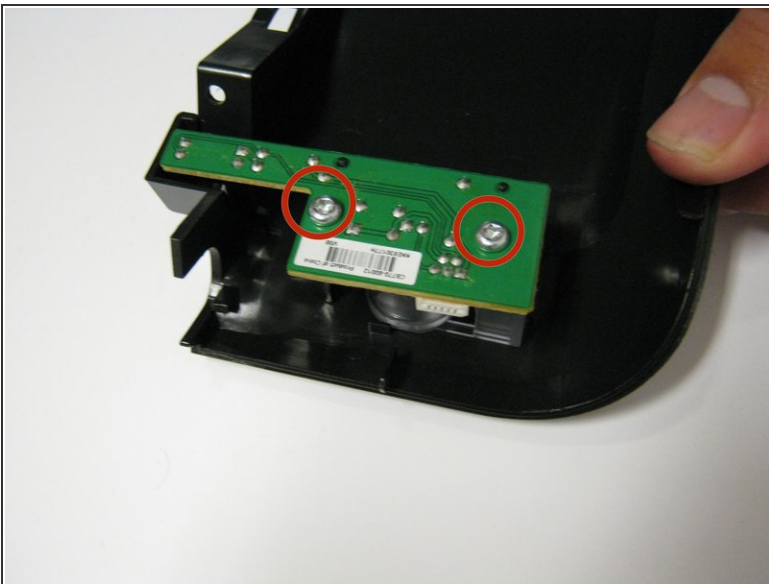
- Take out the two frontal 14.0 mm Torx #10 screws.
 - Carefully lift the frontal cover.
- ⚠ Don't lift it up aggressively. A strip will be attached to it.

Step 5 — Power Button



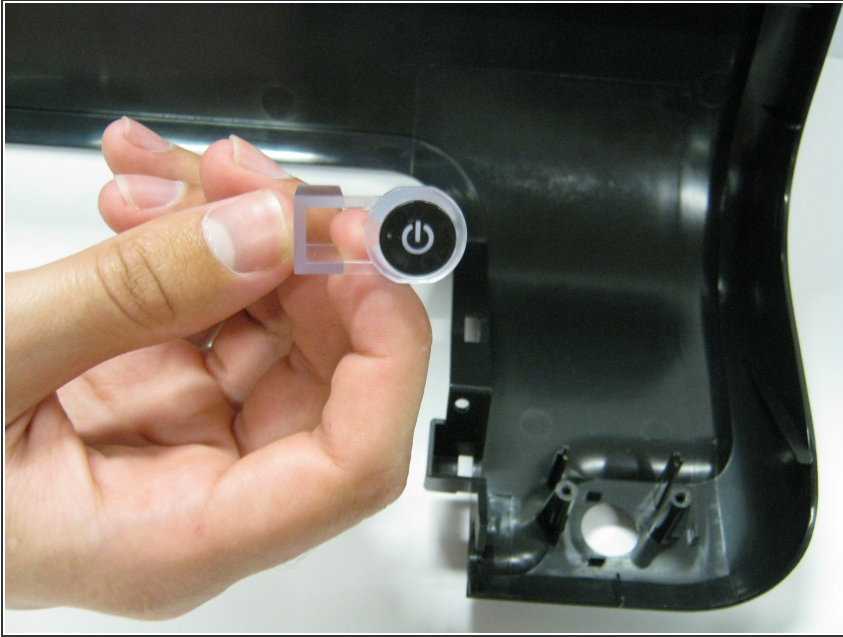
- Remove the strip that connects the printer to the front cover.

Step 6



- Remove the two 13.0 mm Torx #10 screws.
- Carefully lift it up. The button will be located under it.

Step 7



- Lift up the power button.

To reassemble your device, follow these instructions in reverse order.