



HP Deskjet F4480 Scanner Light Replacement

Replacing the main scanning light inside the printer.

Written By: Tim



INTRODUCTION

If the HP Deskjet fails to produce quality scans or copies, and you have already checked that the scanner glass is clean and that there are no other problems, you may need to replace the Scanner Bar/Light inside the printer. This part is the sensor that illuminates and captures an image of the document you are trying to scan or copy. The steps for removing this part are included in the following guide.



TOOLS:

- [T10 Torx Screwdriver](#) (1)
-

Step 1 — Open front access panel



- Open the front access panel by placing your finger in the front slot and pulling gently.

Step 2 — Removing Top Lid



- Open the protective lid that is covering the glass. Press gently against the base of the panel to

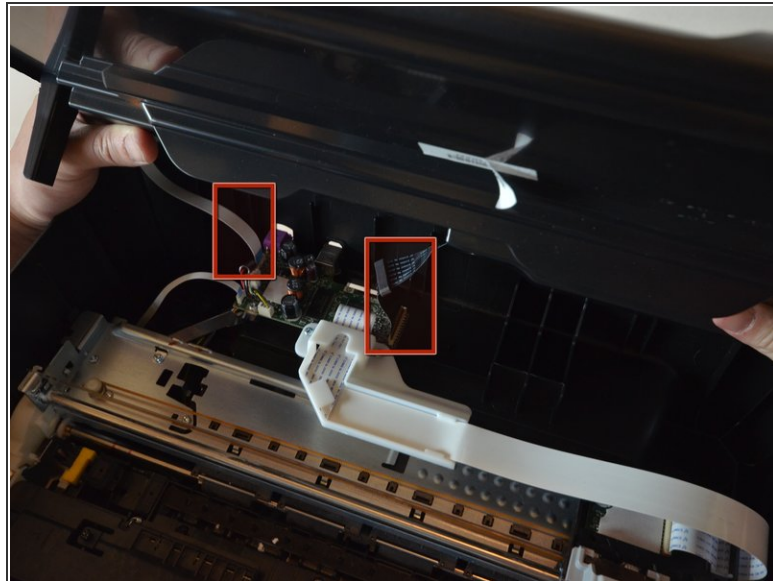
remove the lid from the rest of the printer.

Step 3



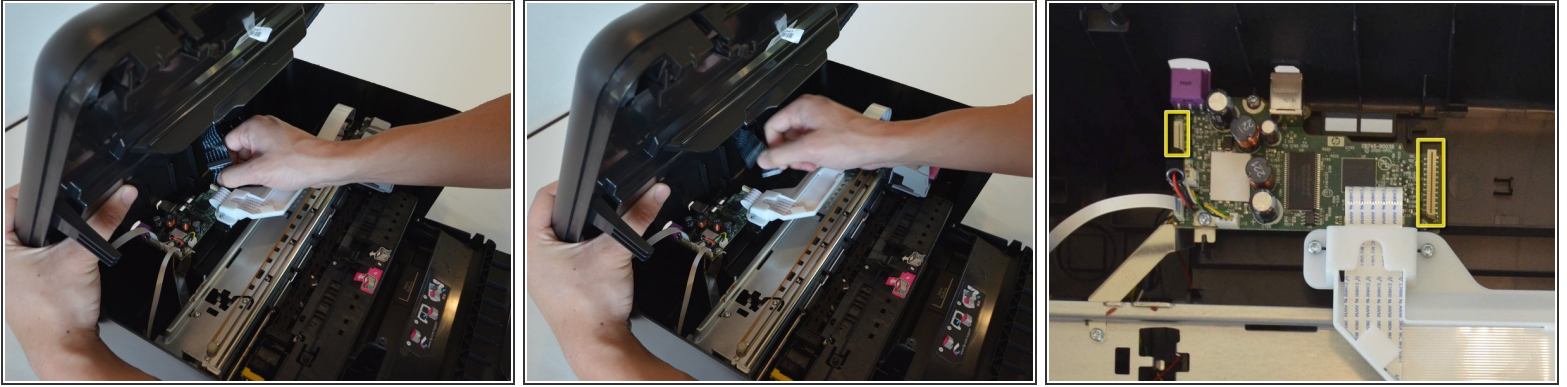
- Remove the **four** 9mm T10 Torx screws on the top.

Step 4



- Carefully lift the top panel off of the printer.
- Do not tear or damage the **two** cables that connect the top lid to the motherboard.

Step 5



- Remove the **two** cables by gripping each one close to their connection ports on the motherboard and gently disconnecting them.

Step 6 — Remove Back Panel of Lid



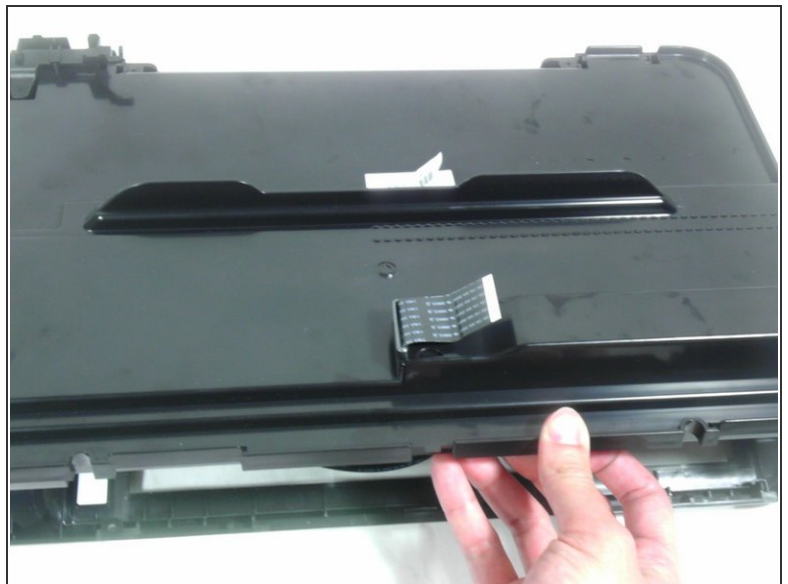
- Remove one 9mm T10 Torx screw from the back of the printer lid.

Step 7




- Press outward on the plastic tab holding the back panel in place.

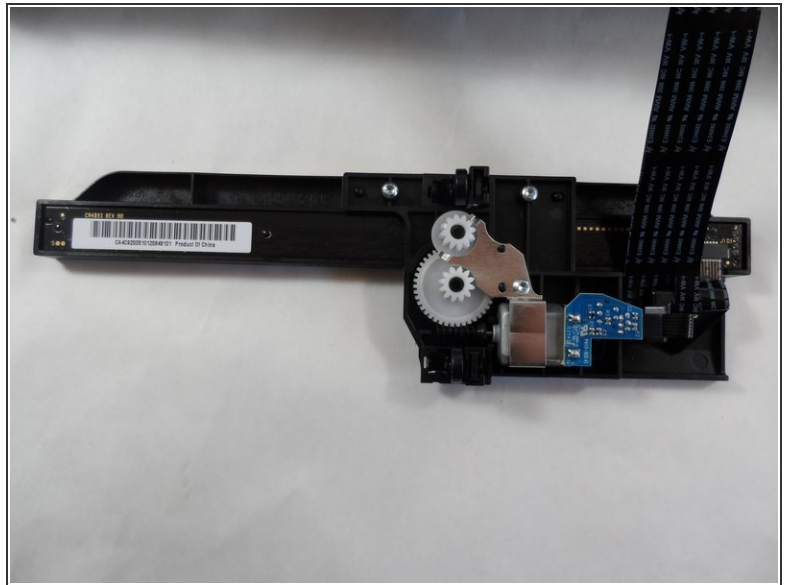
Step 8



- Pull the back panel towards you and lift it away from the rest of the printer cover.

 Some ribbon cables may still be inserted through the back panel. Be careful not to damage these and they should slide out easily.

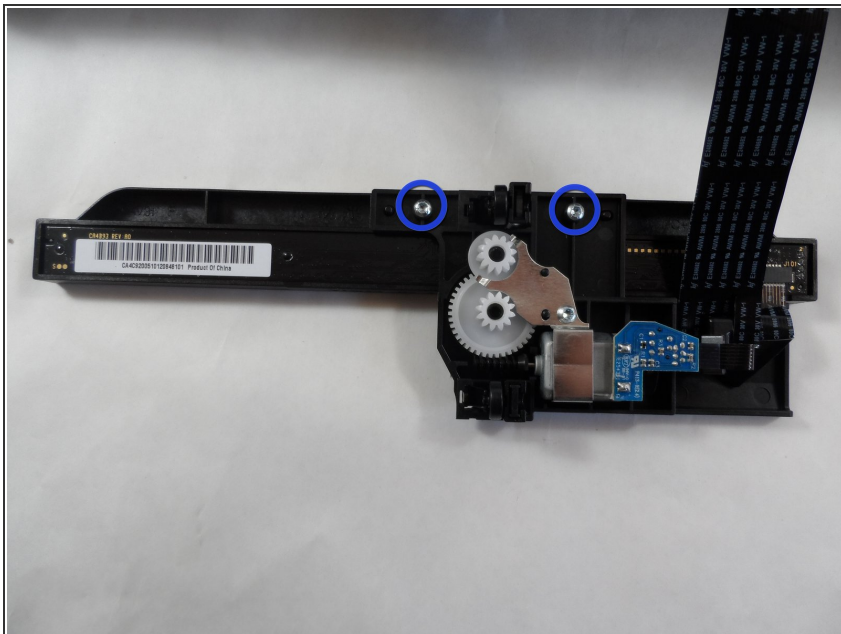
Step 9 — Scanner Light



- Remove scanner bar from track inside lid.

⚠ Do not try to detach the large ribbon cable. It is not designed to be removed from the scanner bar. Also do not try to pull ribbon cable out of the lid.

Step 10



- Remove **two** 9mm T10 Torx screws from the scanner bar to release scanner light.

Step 11



- Separate the scanner light from the rest of the scanner bar.

To reassemble your device, follow these instructions in reverse order.