



HP ENVY Rove 20-k014us Hard Drive Removal

Prerequisite only.

Written By: Berit Bingham



INTRODUCTION

This guide is a PREREQUISITE ONLY for entirely replacing your hard drive. See our "Hard Drive from Case" guide for full steps.



TOOLS:

- [Phillips #1 Screwdriver](#) (1)
 - [Phillips #0 Screwdriver](#) (1)
 - [iFixit Opening Tools](#) (1)
-

Step 1 — Back Cover



⚠ Working on your device while it's turned on is potentially dangerous and can result in electrical shock. Please make sure your device is completely turned off before you begin disassembling it.

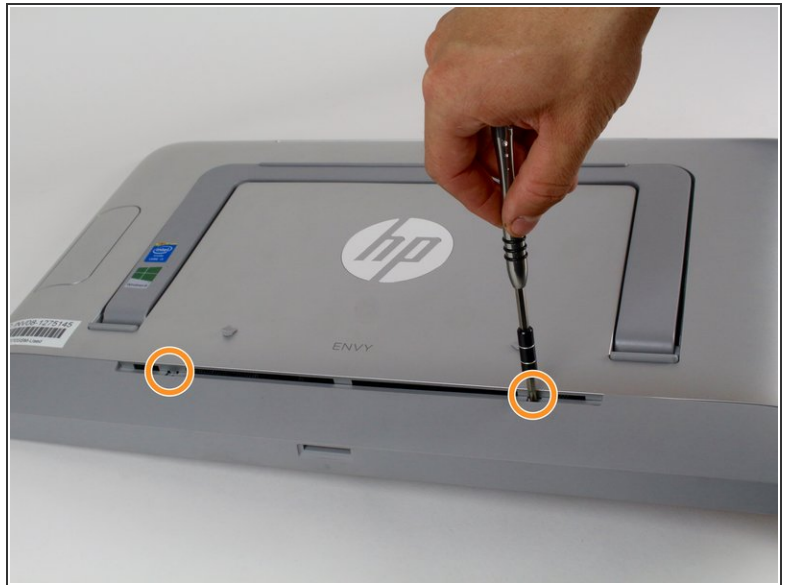
- Flip the device over so the screen is face down.
- i** Make sure the stand is flipped down for the easiest way to work with the device.
- i** Make sure that you put the screen on a clean surface to avoid scratching it.

Step 2



- Remove the SD card in the bottom of the computer by pressing the SD card in, and it will pop out.
- Pull out the SD card completely and set aside.
- i** If you have never put in an SD card into this slot, a dummy one will be there in the slot.

Step 3



- Remove the two rubber screw covers on the bottom of the plastic cover using the plastic opening tool.
- Unscrew the two 6.35 mm PH#1 screws that were underneath the rubber covers.
- ⓘ The screws cannot be removed, they just unscrew from the interior components of the computer.

Step 4



- Use the plastic opening tool along the outer rim of the bottom portion of the back panel.
 - Take off this portion.
- i** Removing the cover for the first time requires a bit of force. Use the plastic opening tool to get as much separation as possible before you pull off the cover to help prevent it from cracking.

Step 5



- Remove three 6.35 mm screw from the back panel using a PH#2 or J1 screw driver.
- Unscrew the two 6.35 mm PH#2 screws. They aren't able to be completely removed and will just be loosened similar to step 3.

Step 6



- Release the stand by pressing the large button on the left so that it is easier to take the back case off.

Step 7



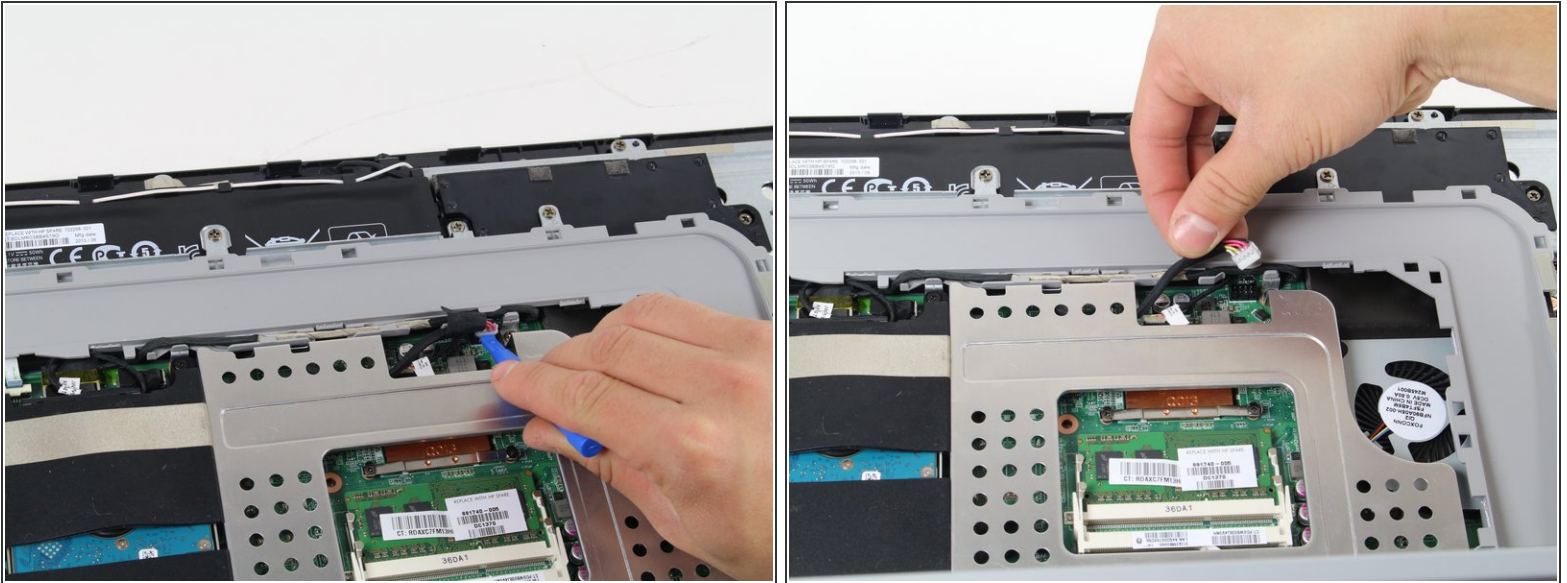
- Use the plastic opening tool to separate the silver back cover from the screen body.
- As shown in picture two, use the tool around the stand as well to avoid cracking the cover.
- ⓘ As with the bottom cover, removing the top cover requires some force. Using the plastic opening tool to get as much separation as possible will make your job easier in the long run.


Step 8



- Slowly apply pressure to the outsides of the cover until it pops out of place.
- Carefully lift the cover away from the computer and untangle it from the stand.
- ☑ When putting the back cover back on, make sure you put the bottom of the cover on first so that the plastic cover sits tightly underneath the bottom of the stand case. Then make sure all the plastic tabs are fully pushed in.
- ☑ Make sure that the power button is aligned when you put the back cover on.

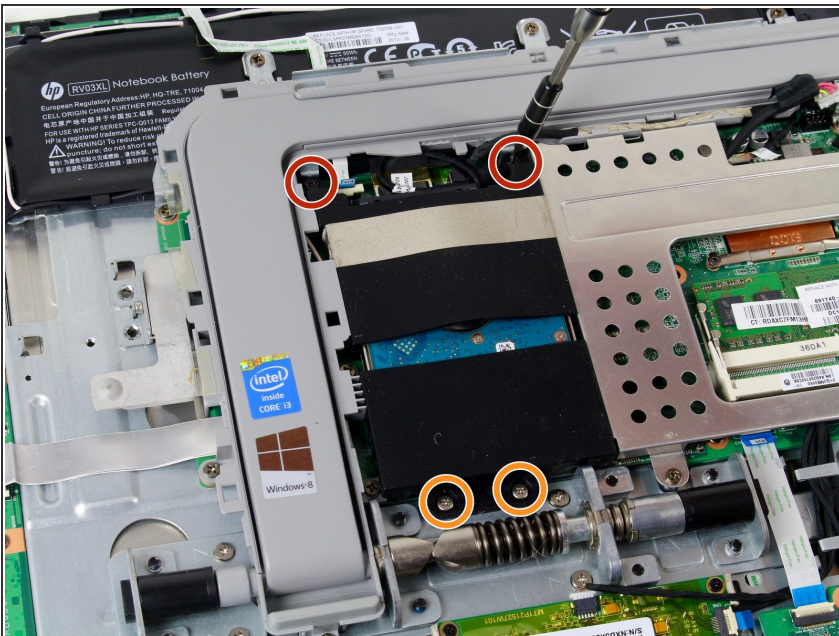
Step 9



 Before working on any of the internal components of the computer, make sure the battery is disconnected so there's no power running through the device.

- Disconnect the battery by using a plastic opening tool and taking the cable connection out.

Step 10 — Hard Drive and Case



- Remove the two black 6.35mm PH #0 screws with a screwdriver from the top of the hard drive.
- Remove the two silver 6.35mm PH#0 screws from the bottom of the hard drive.

Step 11



- Gently remove the hard drive from the computer.
- Unplug the hard drive.

To reassemble your device, follow these instructions in reverse order.