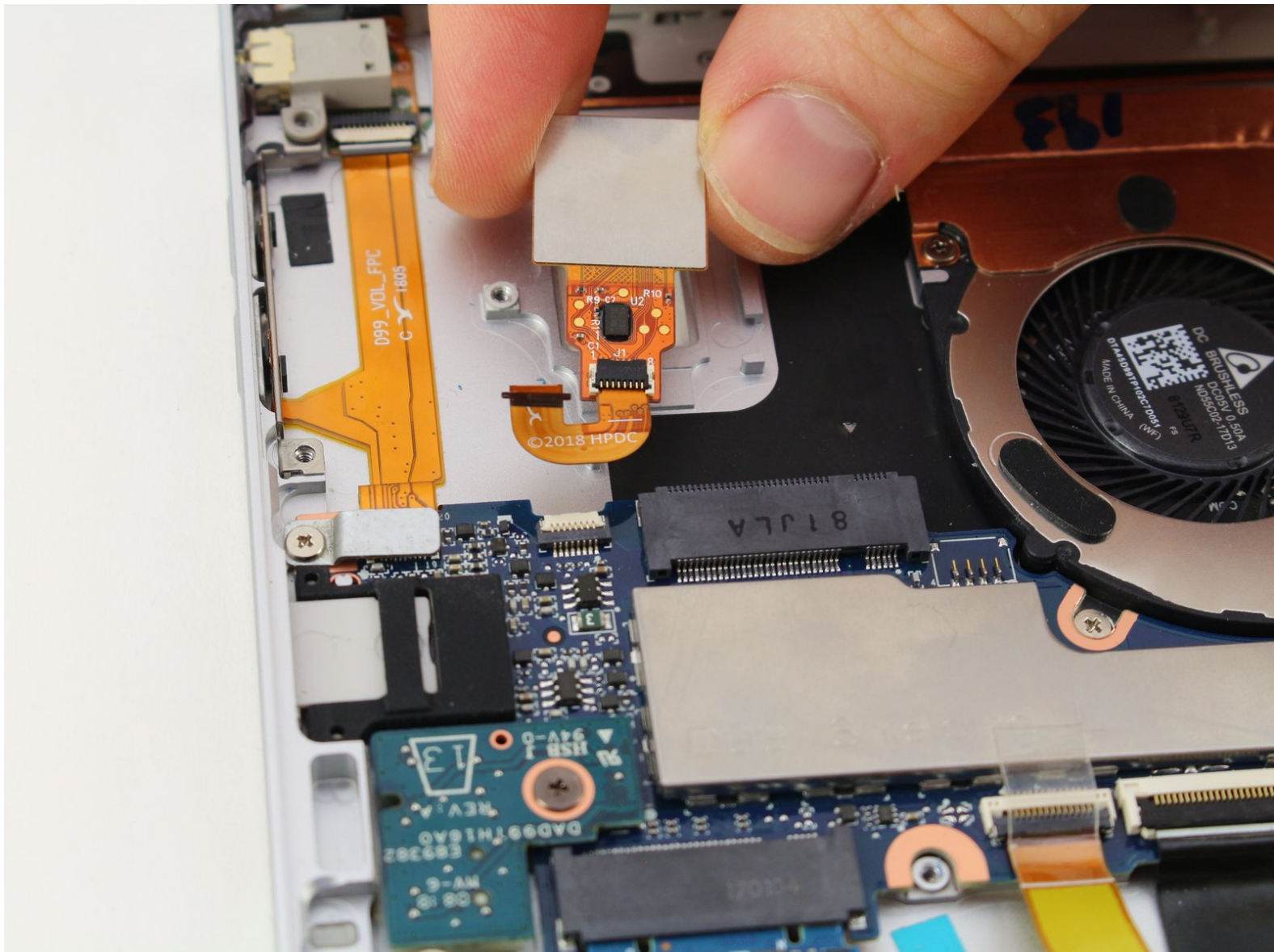




HP Elite X2 1013 G3 Fingerprint Scanner Replacement

Use this guide to replace the fingerprint scanner in your HP Elite X2 1013 G3.

Written By: Hunter Baird-Wise



INTRODUCTION

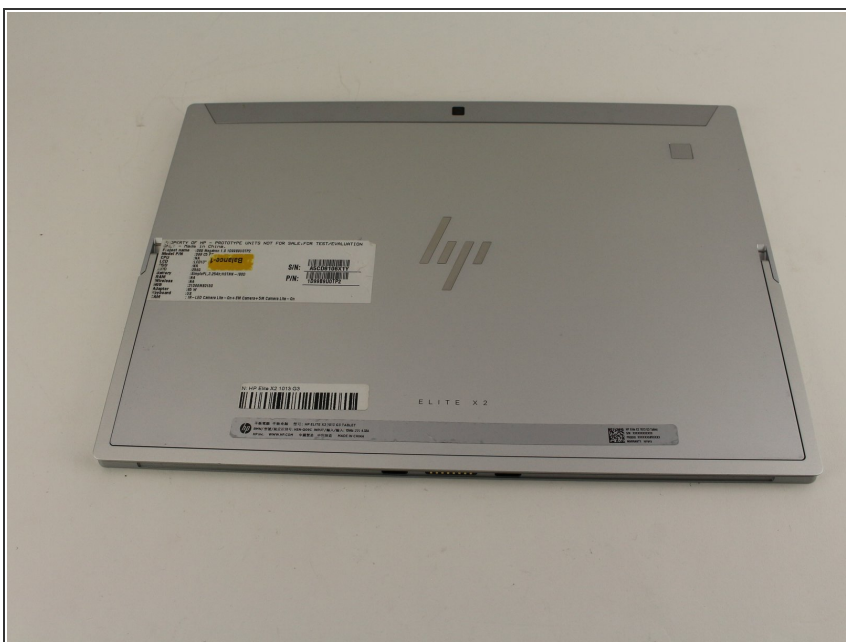
If your laptops Fingerprint Scanner is damaged or no longer functioning reliably, use this guide to remove and replace it.



TOOLS:

- [Phillips #00 Screwdriver](#) (1)
 - [Tweezers](#) (1)
 - [Spudger](#) (1)
 - [Suction Handle](#) (1)
 - [T5 Torx Screwdriver](#) (1)
-

Step 1 — Battery



- ⚠ Turn off your device before completing any subsequent steps.
- Flip the device over so the base is facing the ceiling.

Step 2



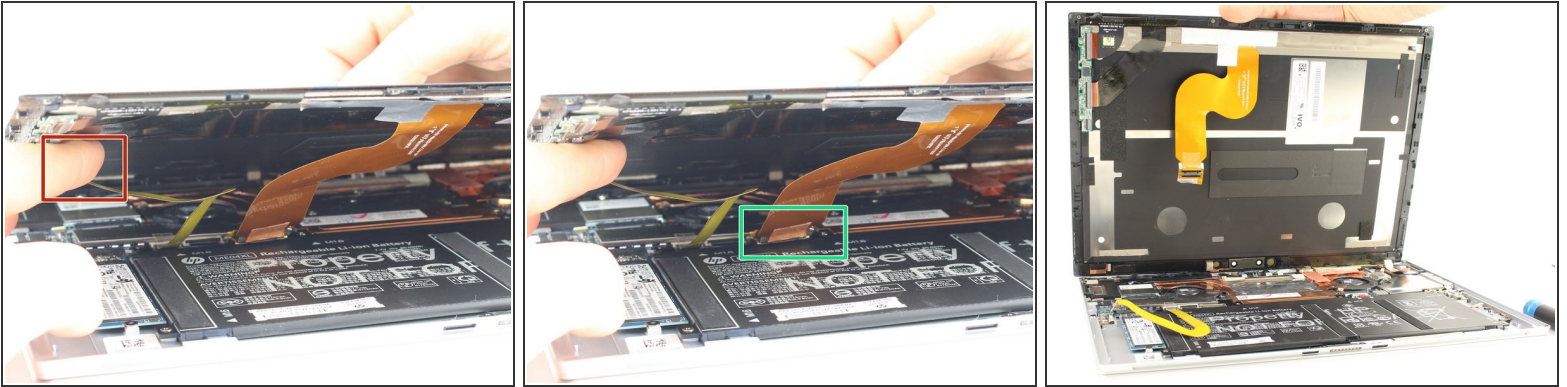
- Lift up the stand as far as it will go, leaving the device face down as pictured.
- Use a T5 Torx Screwdriver to remove the 4 indicated [2 mm] screws.

Step 3



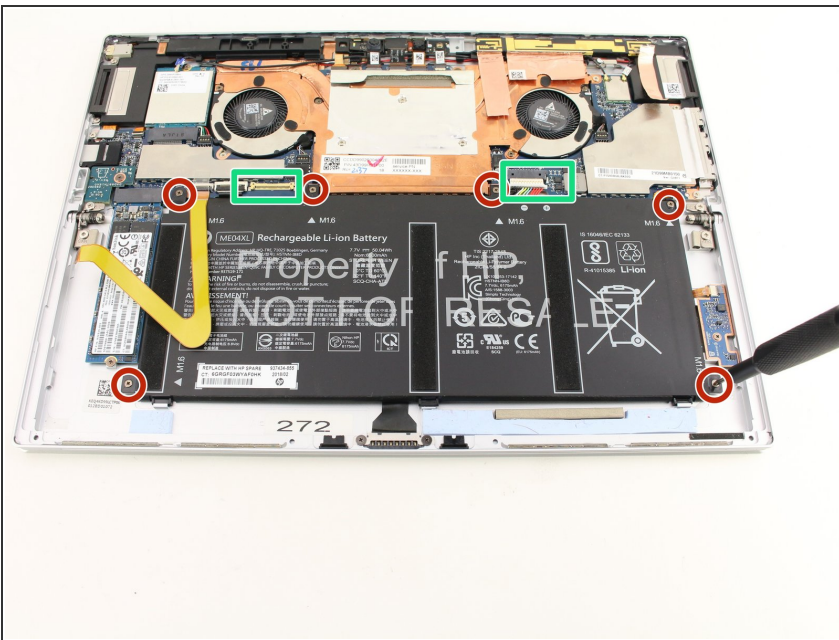
- Flip the device over so the screen is facing the ceiling.
 - Place the suction handle in the center of the screen and slowly lift off the screen until it is at a 30 degree angle, starting by gently prying up the bottom.
- ⚠ DO NOT pull the screen beyond a 30 degree angles. Additional internal components must be disconnected first.

Step 4



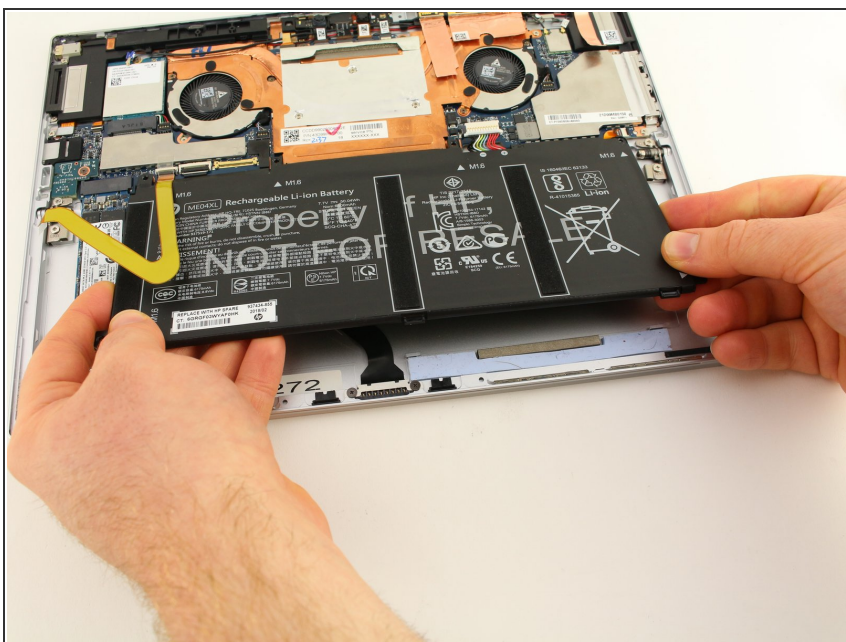
- With the screen lifted at a 30 degree angle, gently disconnect the yellow ribbon cable at the end connected to the screen.
- Gently disconnect the orange ribbon cable at the end connected to the bottom plate.
- Lift the screen off and set it aside.

Step 5



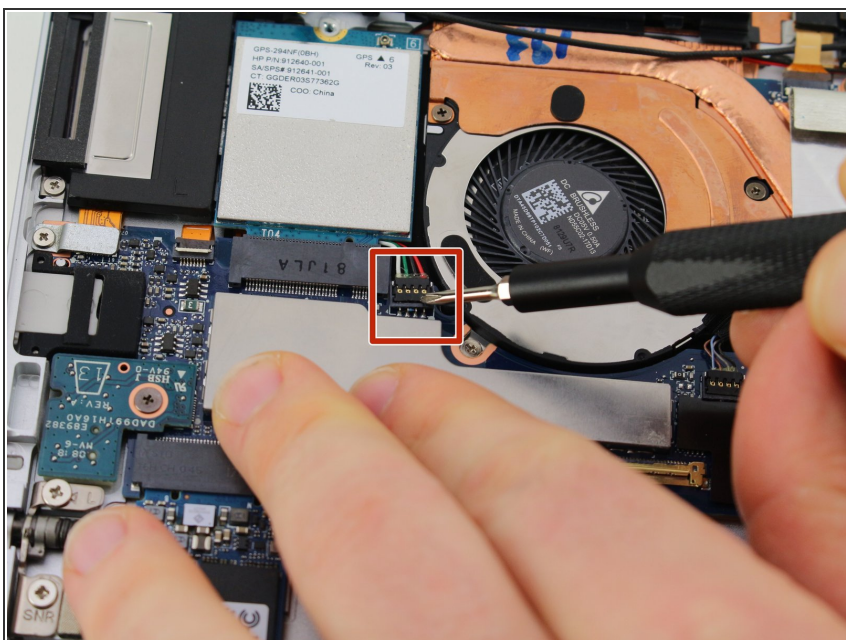
- Use the Phillips #00 Screwdriver to remove the six 2 mm screws.
- Gently disconnect the two connectors.

Step 6



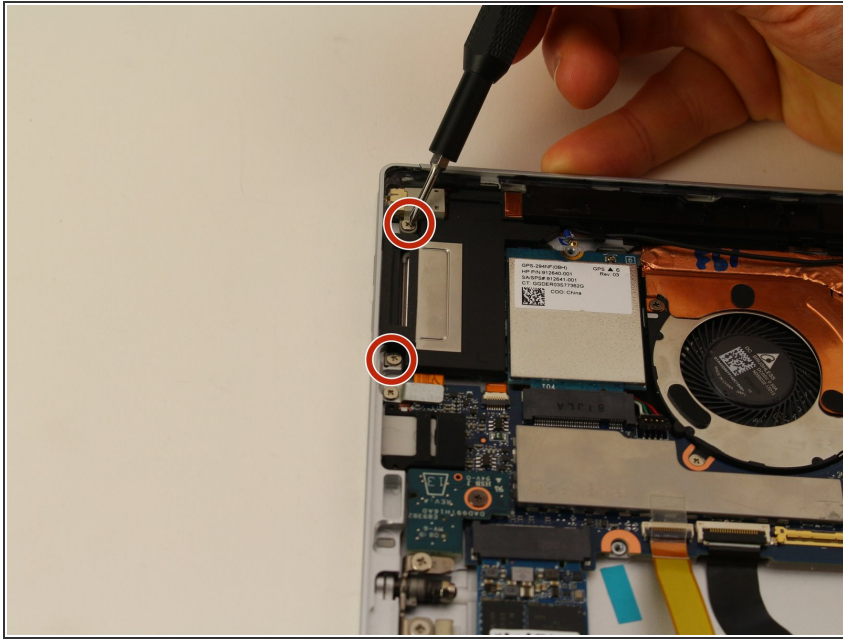
- Lift the battery out of the housing.

Step 7 — Fingerprint Scanner



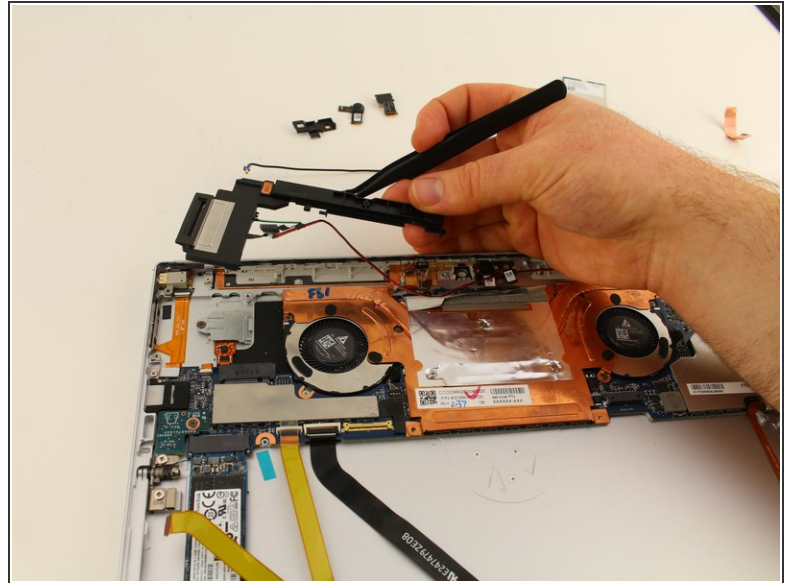
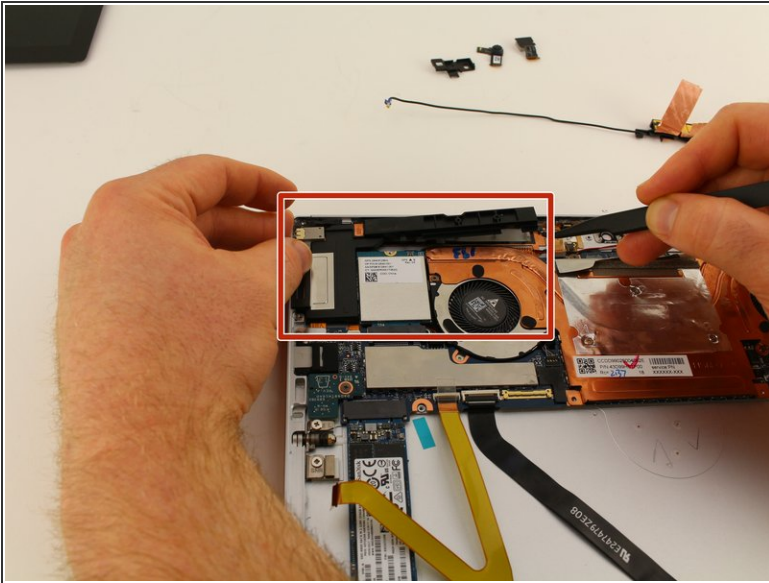
- Disconnect the connector from the motherboard with your fingers.
- ⓘ The screwdriver is only used as a pointing device. Never attempt to use a screwdriver to pry components apart.

Step 8



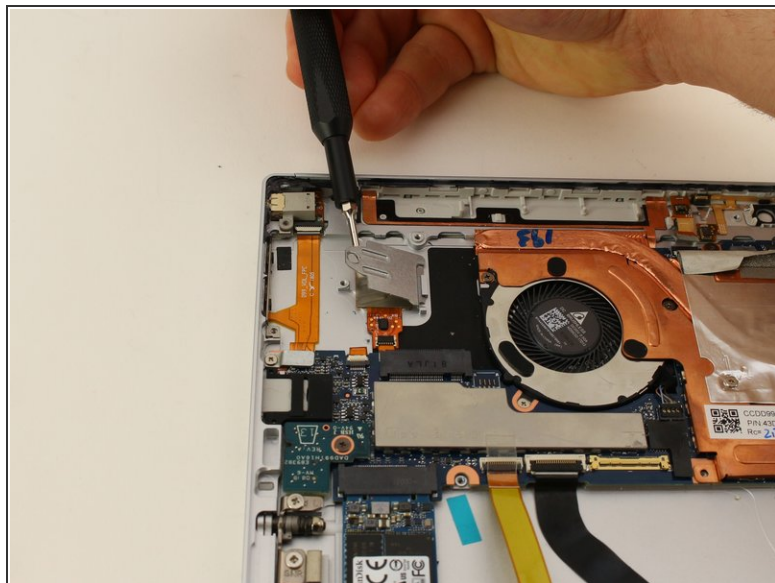
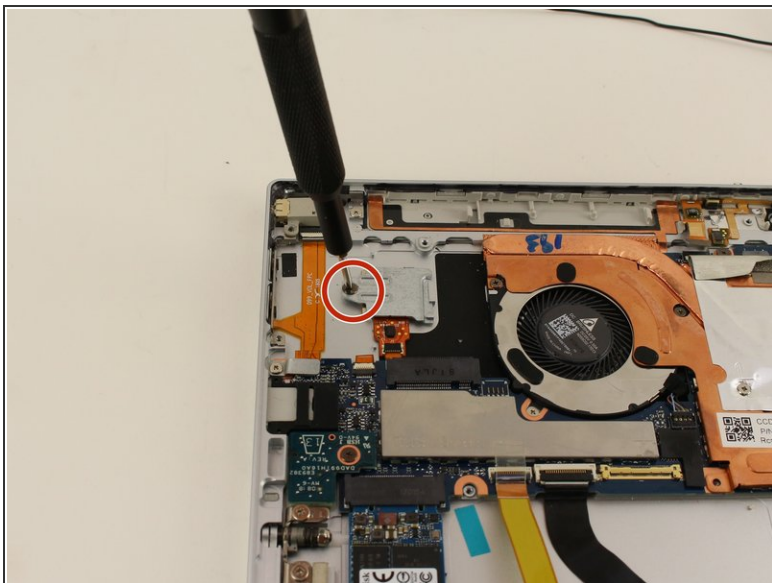
- Remove the two speaker/antenna module mounting 2mm screws using a Phillips #00 Screwdriver.

Step 9



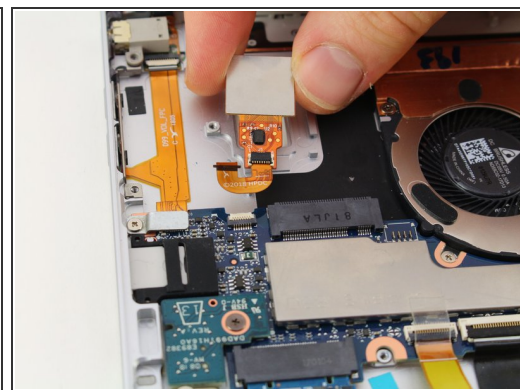
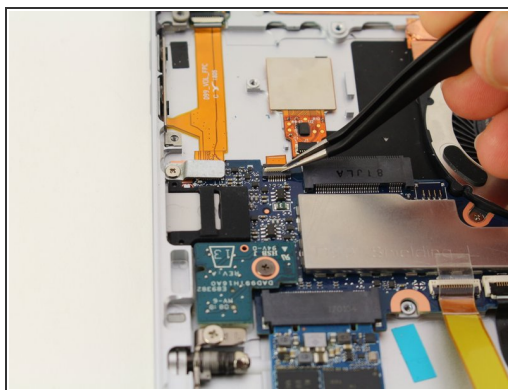
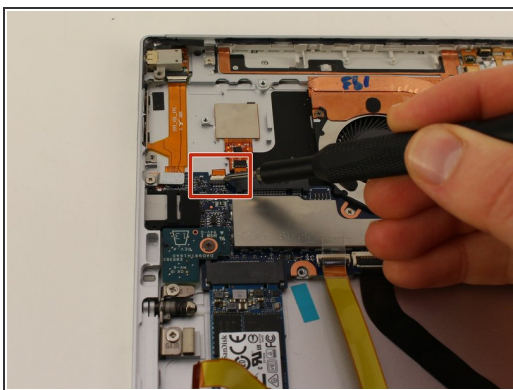
- Use a spudger to gently pry the left black plastic speaker/antenna module off of the frame as pictured. Start by lifting up the right side of the module, then slowly work your way down the module towards the right.
- ⓘ The slight cracking sound you will hear is the sounds of plastic clasps.
- ⓘ We removed other peripherals from the frame so we could move the speaker/antenna module completely out of the way for photographing. You should not have to do this to replace just the fingerprint scanner.

Step 10



- Remove the 2mm bracket mounting screw from the frame using a Phillips #00 Screwdriver.
- Lift up the bracket and set aside.

Step 11



- Open the ribbon cable clamp and pull the cable out.
- ⓘ You may require tweezers to slide the ribbon cable out of the clamp.
- Lift out the fingerprint scanner.

To reassemble your device, follow these instructions in reverse order.

This document was generated on 2019-09-17 02:44:36 PM (MST).

