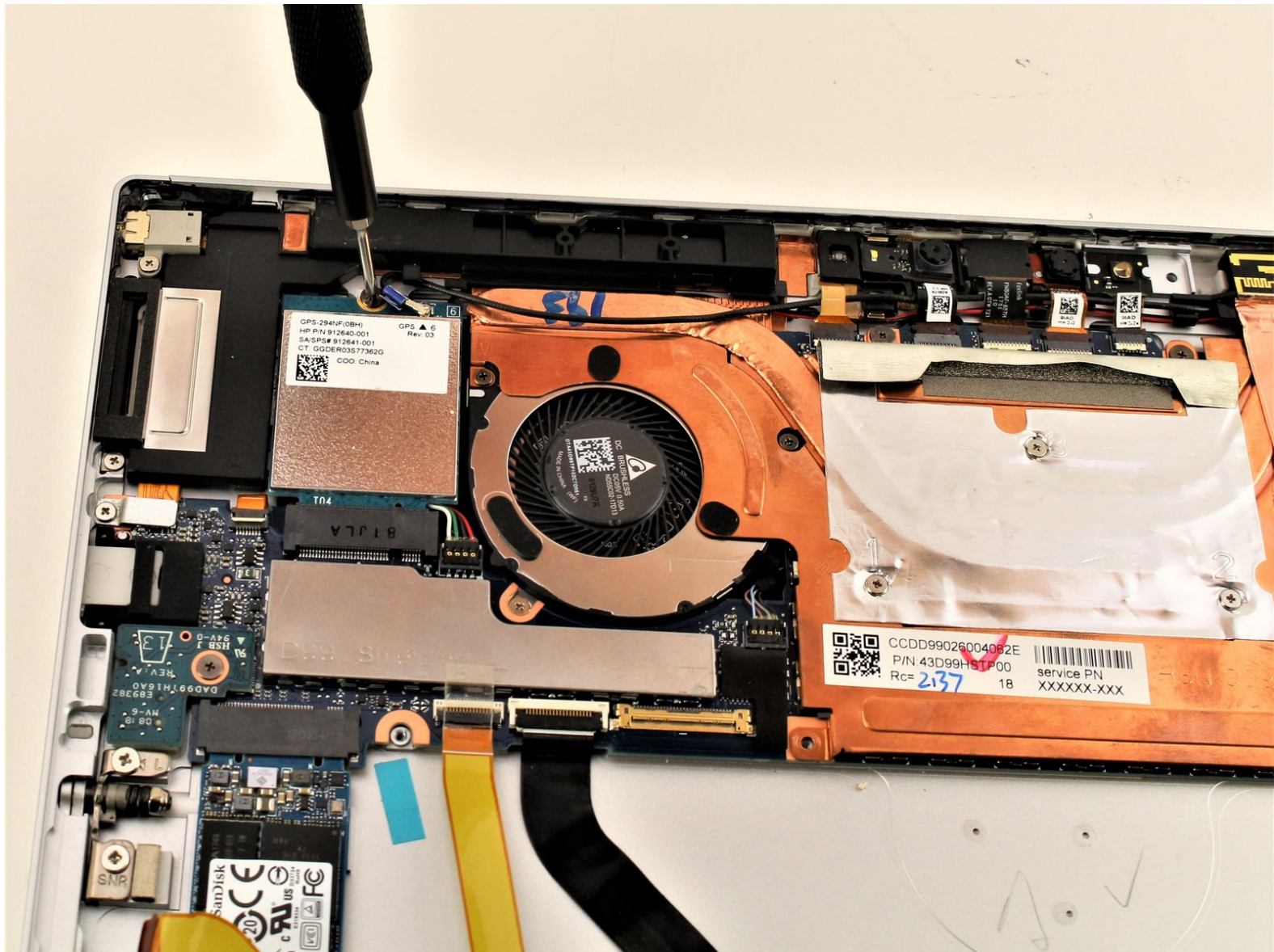




HP Elite X2 1013 G3 Wireless Card Replacement

Use this guide to replace the wireless card in your HP Elite X2 1013 G3.

Written By: Kory Haydon



INTRODUCTION

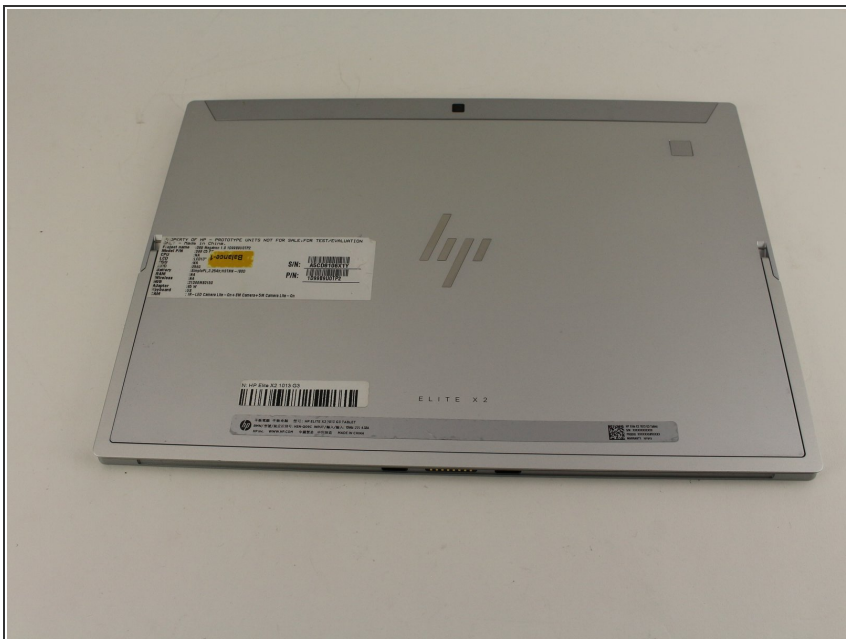
If your device cannot access or recognize your Wi-Fi networks, the wireless card may be faulty. This guide will show you how to replace the wireless card in your device.



TOOLS:

- [Phillips #00 Screwdriver](#) (1)
 - [Suction Handle](#) (1)
 - [T5 Torx Screwdriver](#) (1)
-

Step 1 — Battery



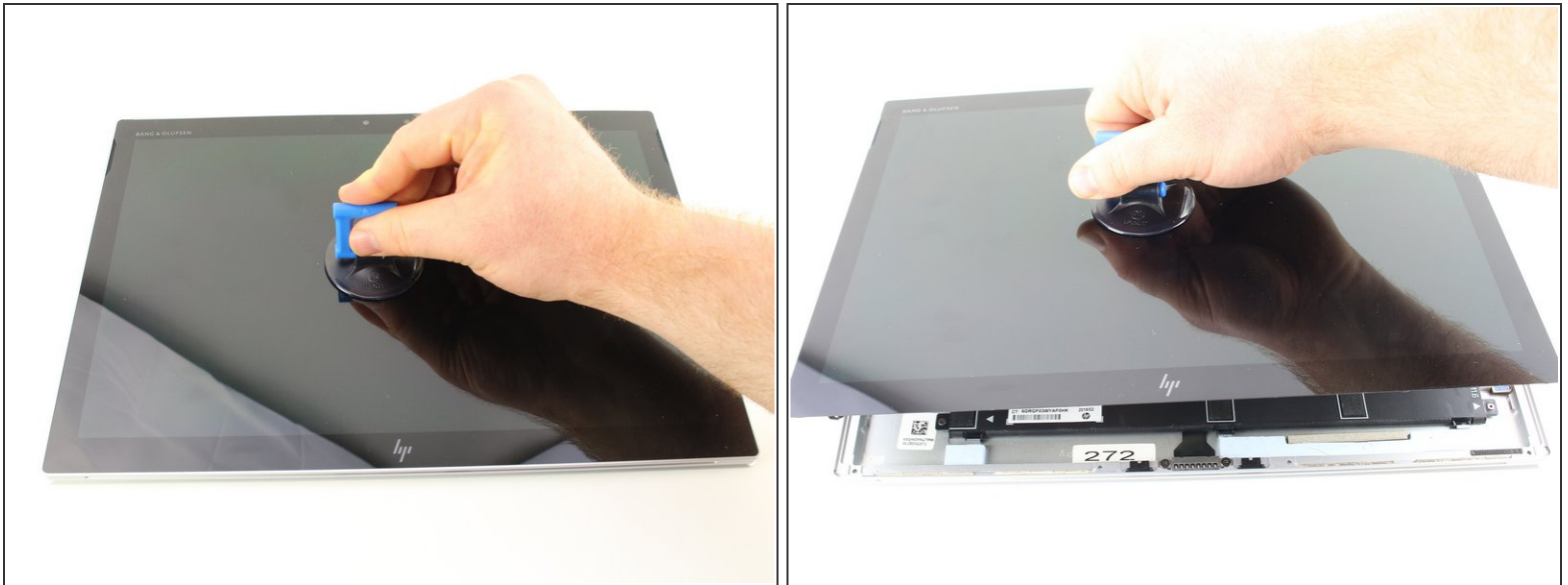
- ⚠ Turn off your device before completing any subsequent steps.
- Flip the device over so the base is facing the ceiling.


Step 2



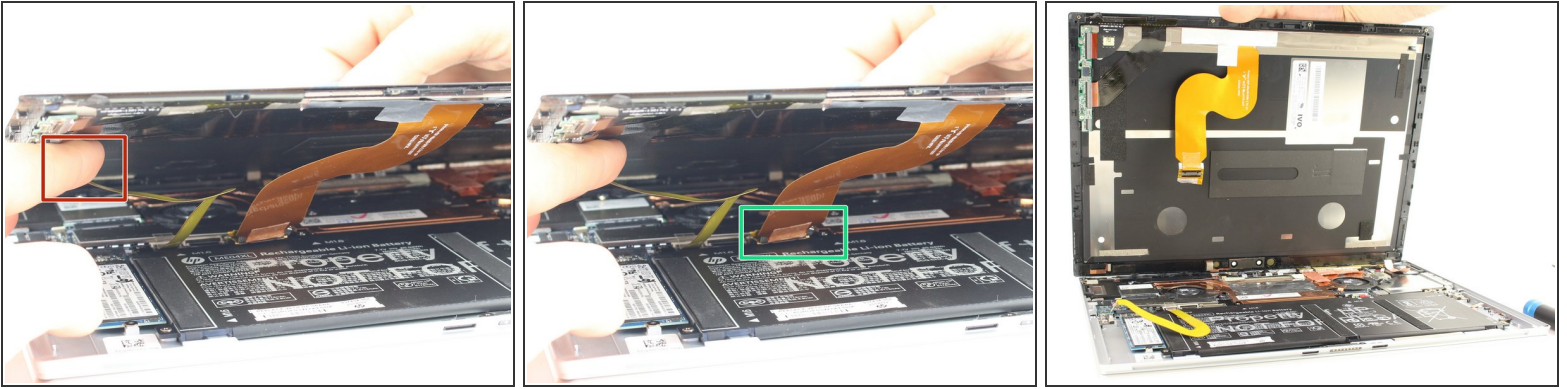
- Lift up the stand as far as it will go, leaving the device face down as pictured.
- Use a T5 Torx Screwdriver to remove the 4 indicated [2 mm] screws.

Step 3



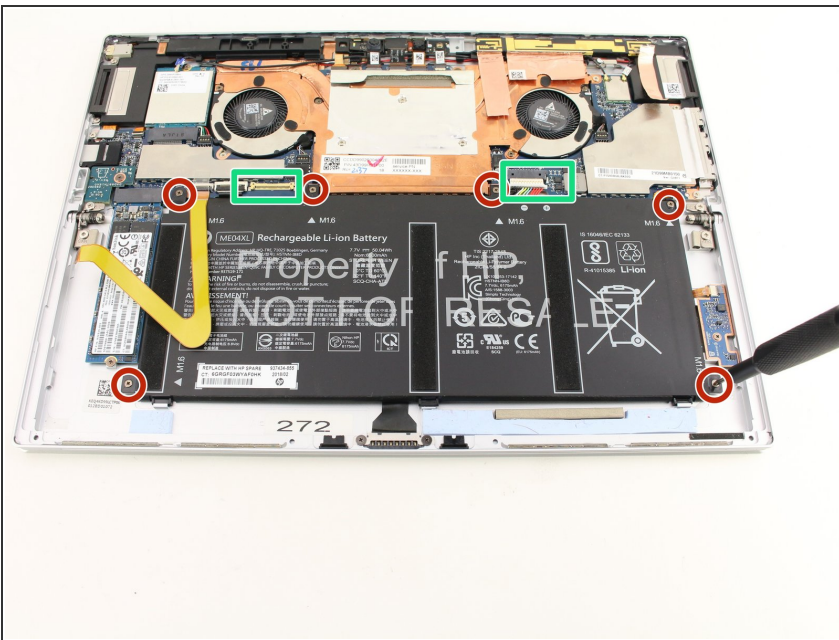
- Flip the device over so the screen is facing the ceiling.
 - Place the suction handle in the center of the screen and slowly lift off the screen until it is at a 30 degree angle, starting by gently prying up the bottom.
-  **DO NOT** pull the screen beyond a 30 degree angles. Additional internal components must be disconnected first.

Step 4



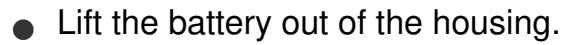
- With the screen lifted at a 30 degree angle, gently disconnect the yellow ribbon cable at the end connected to the screen.
- Gently disconnect the orange ribbon cable at the end connected to the bottom plate.
- Lift the screen off and set it aside.

Step 5

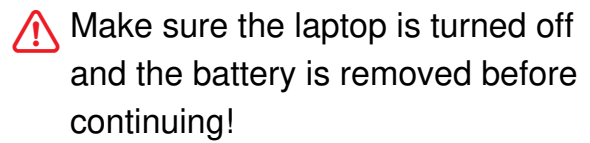


- Use the Phillips #00 Screwdriver to remove the six 2 mm screws.
- Gently disconnect the two connectors.

Step 6

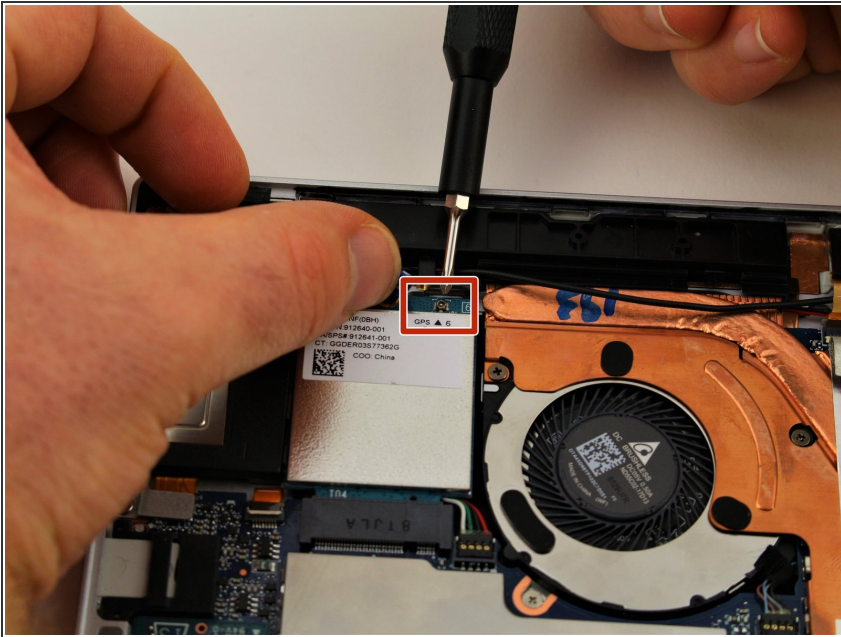


Step 7 — Wireless Card



- Remove the single 2 mm screw with a Phillips #00 Screwdriver.

Step 8



- Gently disconnect the single wire connector with your finger.

Step 9



- Gently lift the wireless card and firmly pull it out of the motherboard.
- ⚠ Pay attention to the orientation of the wireless card. Trying to put your replacement wireless card in the wrong way could damage the part or the connector.

To reassemble your device, follow these instructions in reverse order.