



# HP Elite x2 1012 G2 Battery Replacement

How to replace the battery in an HP Elite x2 1012 G2.

Written By: Andy Velazquez



## INTRODUCTION

Batteries are often the first components to wear out in electronic devices and as a result are a common problem. A dead battery can be frustrating, but fortunately replacing the battery on the HP Elite x2 1012 G2 is quick and easy.

---

### TOOLS:

- [T5 Torx Screwdriver](#) (1)
  - [Suction Handle](#) (1)
  - [iFixit Opening Tools](#) (1)
  - [Phillips #0 Screwdriver](#) (1)
-

## Step 1 — Screen



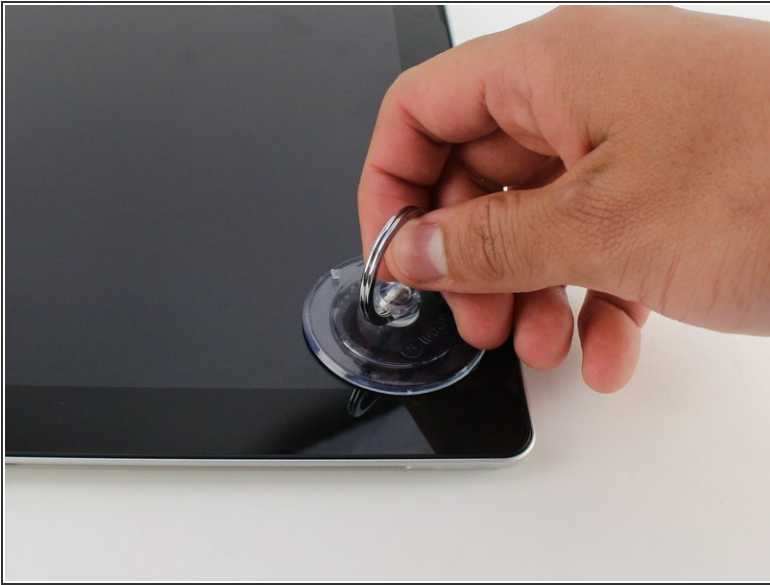
- ❗ Make sure the device is turned off before starting.
- Orient the device so the back is facing you, with the kickstand up.

## Step 2



- Remove the six 3mm Torx T5 screws underneath the kickstand.

## Step 3



- Turn the device over so the screen is facing you.
- Place a suction cup firmly onto a corner of the screen.
- Lift up gently until you see the screen separate from the casing.
- Repeat this process for all four corners.



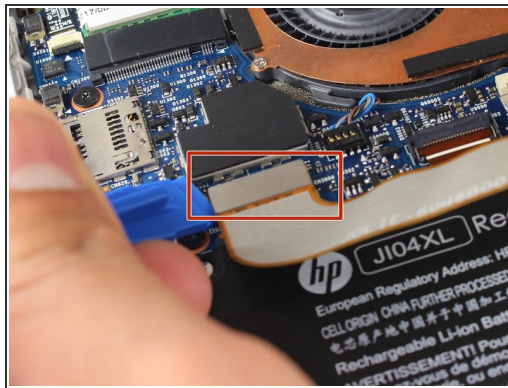
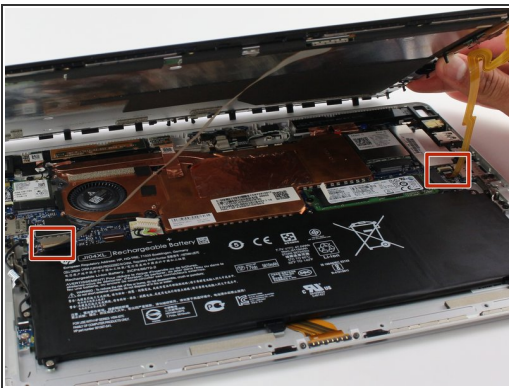
## Step 4



- Lift the screen up and off of the device.

⚠ Pry each corner up first, otherwise you may damage or crack the screen.

## Step 5



- Remove the two connectors on the back of the screen by lifting the connector tabs on the motherboard with a plastic opening tool and pulling gently.

## Step 6



- Remove the screen by gently lifting it off of the device.

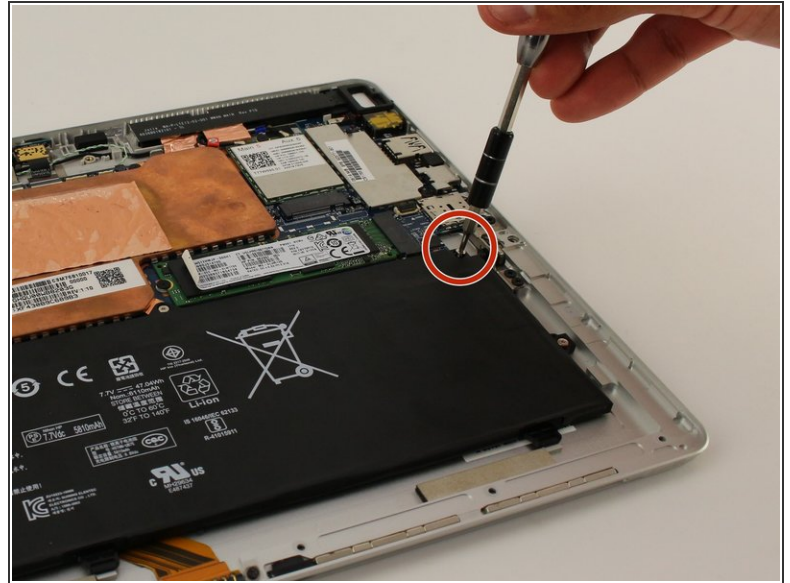
## Step 7 — Battery



- Orient the device so that the battery is closest to you.
- ⓘ The battery is the large, black rectangle at the bottom of the device.

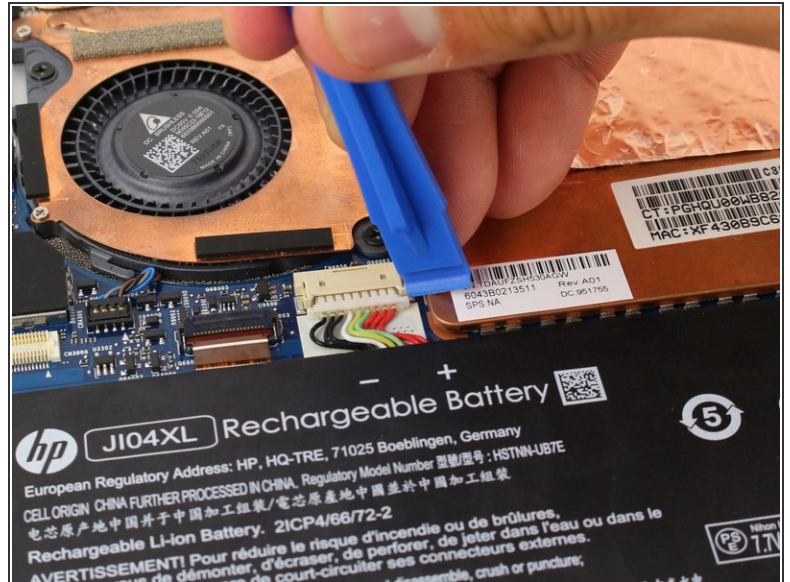
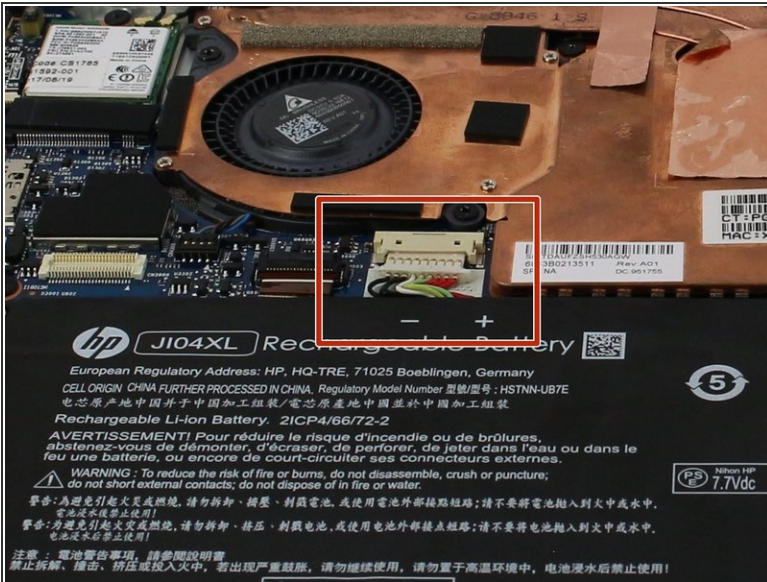


## Step 8



- Remove all six Phillips 3 mm screws around the battery by rotating in the counterclockwise direction with a Phillips screwdriver.

## Step 9



- Remove the battery's connector by pushing both sides of the tab towards yourself with a plastic opening tool.

## Step 10



- Lift the battery out of the device.

To reassemble your device, follow these instructions in reverse order.