



HP Elite x2 1012 G2 Wi-Fi Card Replacement

How to replace the HP Elite x2 1012 G2's Wi-Fi card.

Written By: Nathan Diekema



INTRODUCTION

The HP Elite X2 1012 G2's Wi-Fi card can become damaged or disconnected over time. This guide will walk you through how to replace the Wi-Fi card in your HP Elite X2 1012 G2.



TOOLS:

- [T5 Torx Screwdriver](#) (1)
 - [Suction Handle](#) (1)
 - [iFixit Opening Tools](#) (1)
 - [Phillips #0 Screwdriver](#) (1)
-

Step 1 — Screen



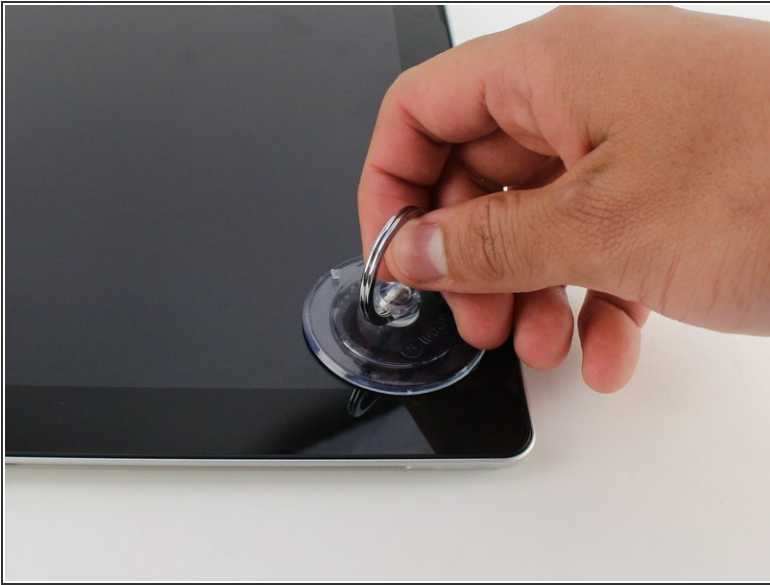
- ❗ Make sure the device is turned off before starting.
- Orient the device so the back is facing you, with the kickstand up.

Step 2



- Remove the six 3mm Torx T5 screws underneath the kickstand.

Step 3



- Turn the device over so the screen is facing you.
- Place a suction cup firmly onto a corner of the screen.
- Lift up gently until you see the screen separate from the casing.
- Repeat this process for all four corners.

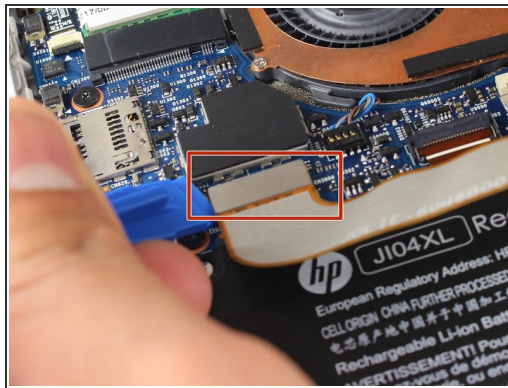
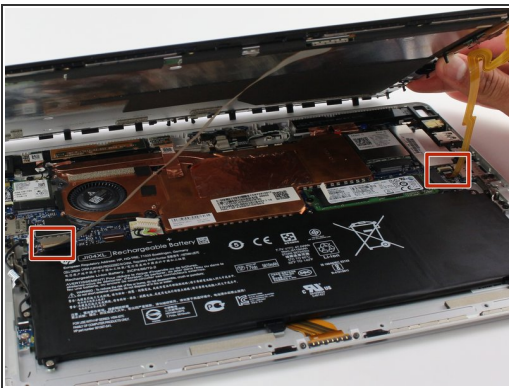
Step 4



- Lift the screen up and off of the device.

⚠ Pry each corner up first, otherwise you may damage or crack the screen.

Step 5



- Remove the two connectors on the back of the screen by lifting the connector tabs on the motherboard with a plastic opening tool and pulling gently.

Step 6



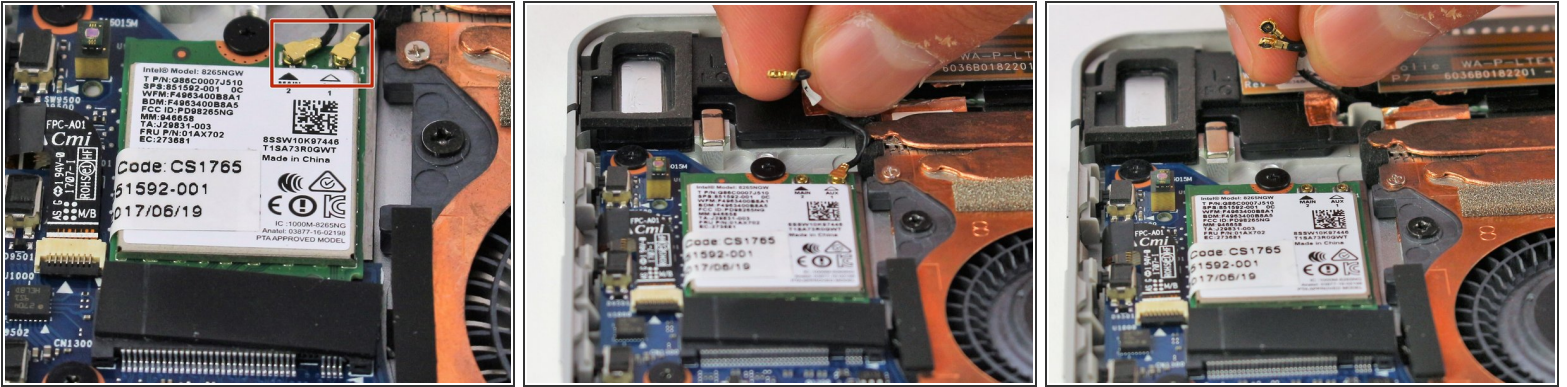
- Remove the screen by gently lifting it off of the device.

Step 7 — Wi-Fi Card



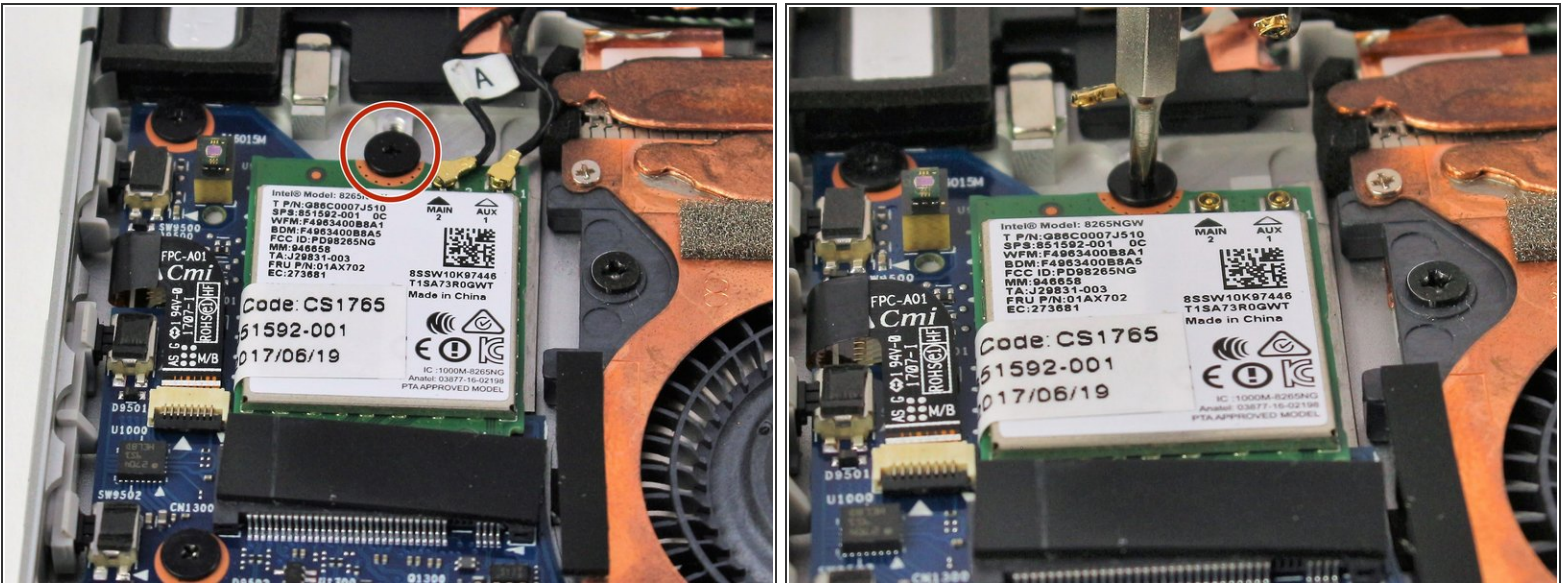
- Orient the device so that the battery is closest to you.
- ⓘ The battery is the large, black rectangle at the bottom of the device.

Step 8



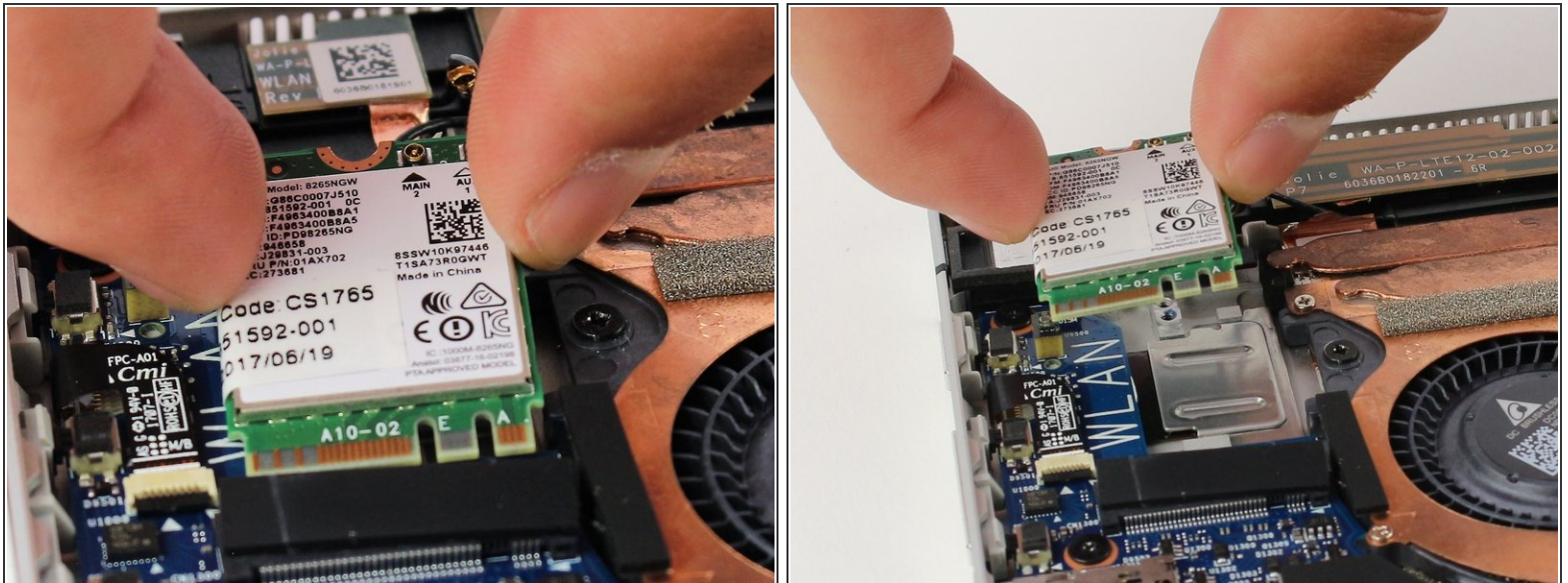
- Detach the two wire connections on the upper right of the wi-fi card by hand.

Step 9



- Use a Phillips 2mm screwdriver to remove the single M2 2.0x2.0 screw holding the wi-fi card in place. Turn the screwdriver counterclockwise to remove the screw.

Step 10



- Slide the wi-fi card out by hand, lifting the card up and out of the device.
- ⓘ If it doesn't come out immediately, slowly wiggle the card side to side until it slides out of its connector.

To reassemble your device, follow these instructions in reverse order.