



HP Elite x2 G1 1012 Battery Replacement

The HP x2 1012 G1 was a tablet-laptop hybrid released in May 2016.

Written By: Colin Mika



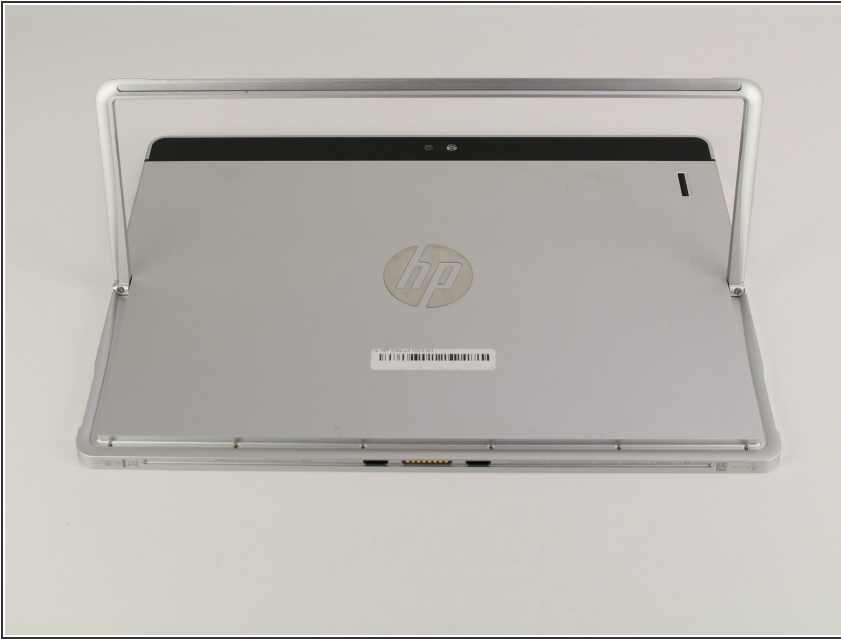
INTRODUCTION

If the battery is running low or does not work any more, use this guide to replace it.


TOOLS:

- [Heavy-Duty Suction Cups \(Pair\)](#) (1)
 - [Phillips #00 Screwdriver](#) (1)
-

Step 1 — Display




- With the screen face down, lift up the stand as far as it goes.

 Make sure not to force it past the resting point.

Step 2



- Use a screwdriver to remove the six screws on the back of the tablet.

 (The screws were not in our device, so we do not know what kind of screwdriver to use.)

Step 3



- After removing the screws, delicately close the stand.
- Flip the tablet on its back so that the screen is facing up.

Step 4



- Use the suction cup to carefully separate the screen from the device. Pull upwards with a fluid and smooth motion.

⚠ Do not lift too fast! There will still be wires connecting the screen to the device. Make sure they are not tampered with.

Step 5



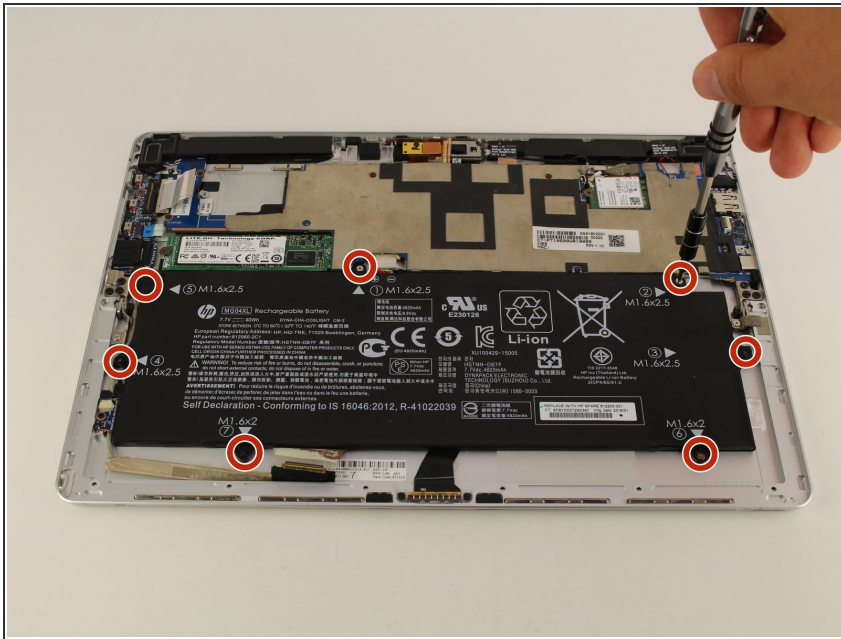
- Remove the tape on the lower left side of the screen.
- Underneath the tape, disconnect the LCM cable, the larger wire that was underneath the tape, from the back of the tablet screen.

Step 6



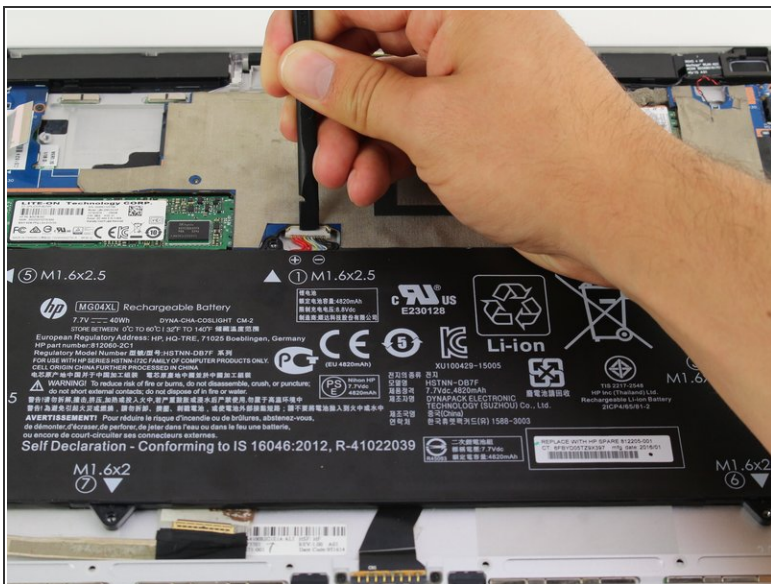
- Disconnect the flex cable from the device using the spudger.
- Remove the Display Assembly from the device.

Step 7 — Battery



- Use a Phillips #00 screwdriver to remove the seven screws holding the battery in place.
- ① Five 1.6x2.5 mm and two 1.6x2 screws should be on the battery.

Step 8



- Disconnect the red, white, and black wires and remove the battery from the device.
- ① Make sure to properly dispose of the dead battery.

To reassemble your device, follow these instructions in reverse order.