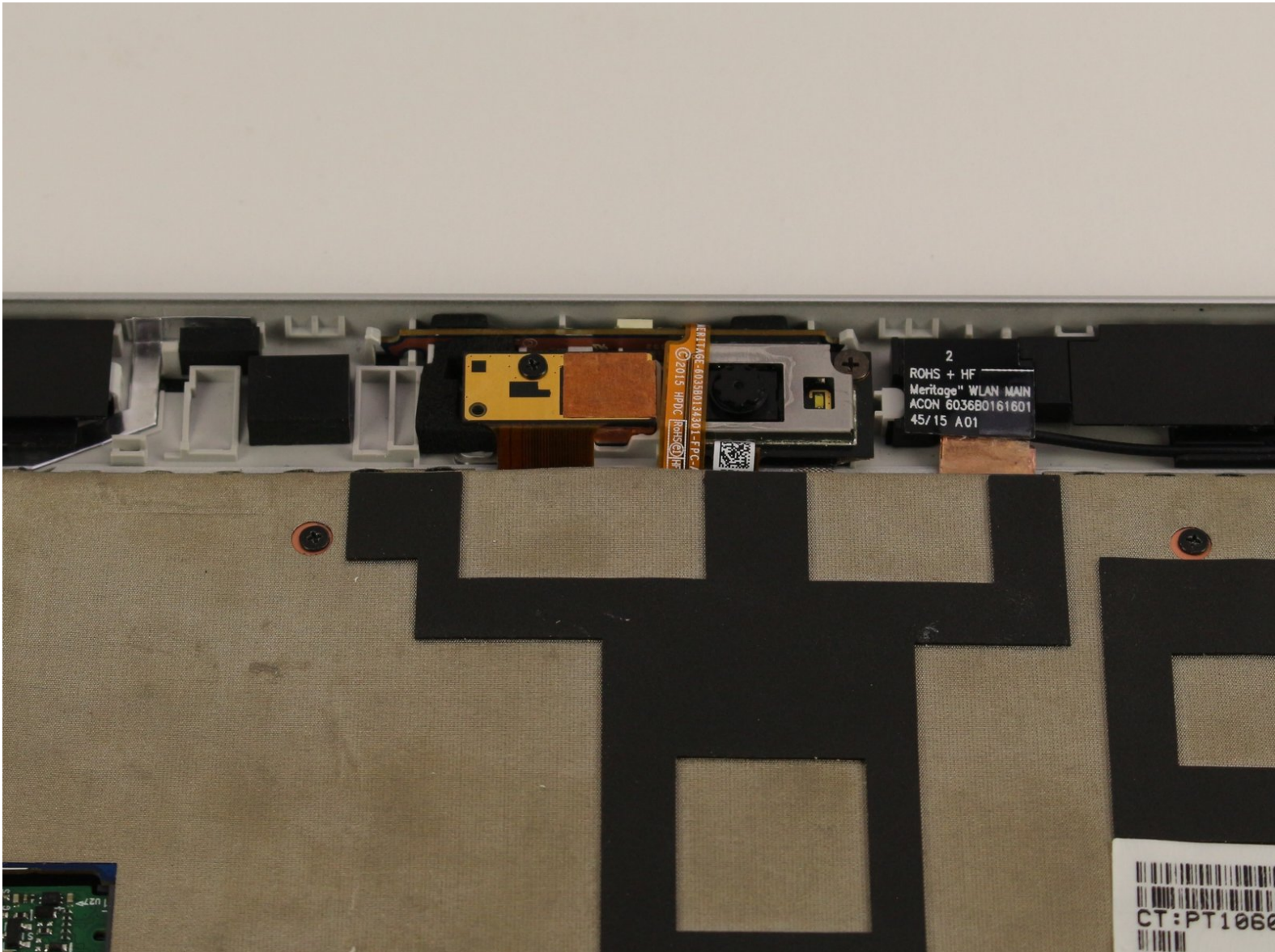




# HP Elite x2 G1 1012 Front Facing Camera Replacement

The HP x2 1012 G1 was a tablet-laptop hybrid released in May 2016.

Written By: Colin Mika



---

# INTRODUCTION

If the front camera is damaged or needs maintenance, use this guide to replace it.

---



## TOOLS:

- [Phillips #0 Screwdriver](#) (1)
  - [Heavy-Duty Suction Cups \(Pair\)](#) (1)
  - [Phillips #00 Screwdriver](#) (1)
  - [Tweezers](#) (1)
-

## Step 1 — Display



- With the screen face down, lift up the stand as far as it goes.

⚠ Make sure not to force it past the resting point.

## Step 2



- Use a screwdriver to remove the six screws on the back of the tablet.

*i* (The screws were not in our device, so we do not know what kind of screwdriver to use.)

### Step 3



- After removing the screws, delicately close the stand.
- Flip the tablet on its back so that the screen is facing up.

### Step 4

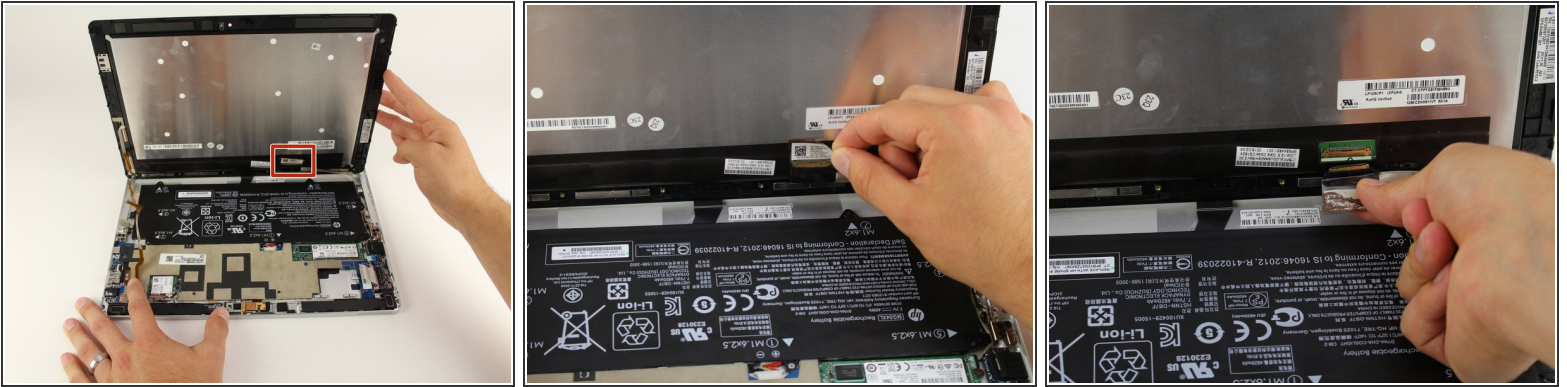


- Use the suction cup to carefully separate the screen from the device. Pull upwards with a fluid and smooth motion.

**⚠ Do not lift too fast!** There will still be wires connecting the screen to the device. Make sure they are not tampered with.



## Step 5



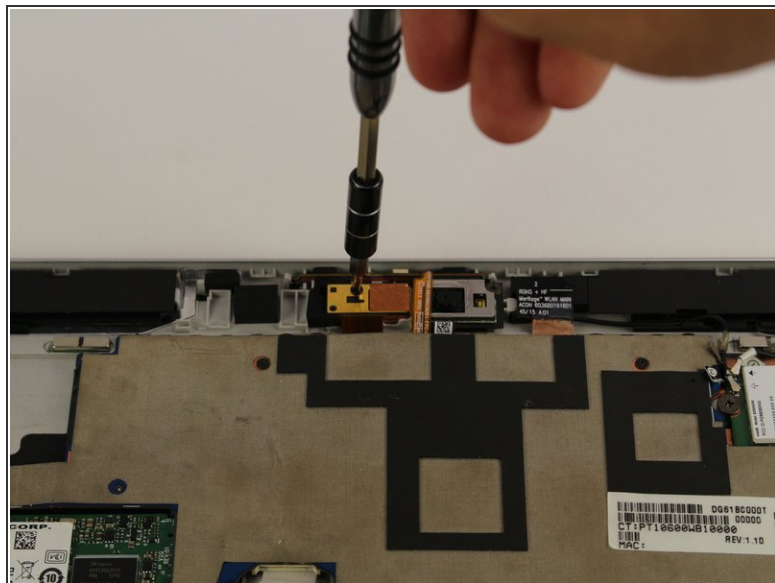
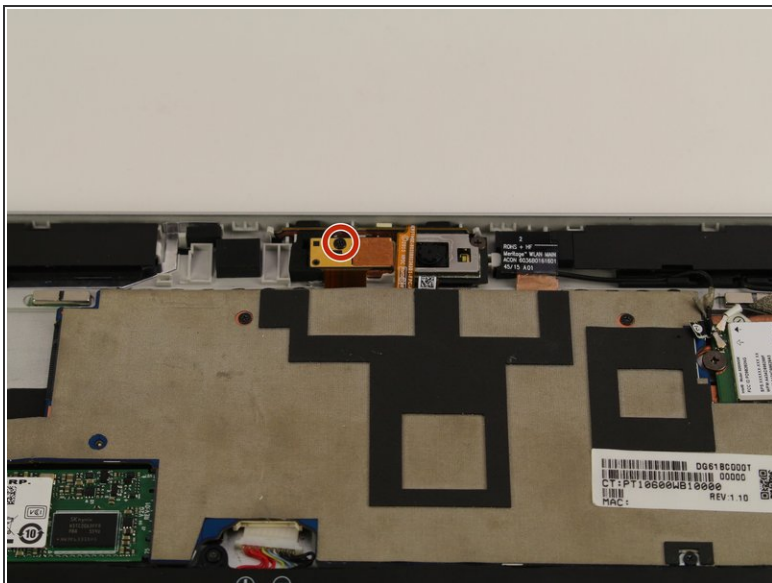
- Remove the tape on the lower left side of the screen.
- Underneath the tape, disconnect the LCM cable, the larger wire that was underneath the tape, from the back of the tablet screen.

## Step 6



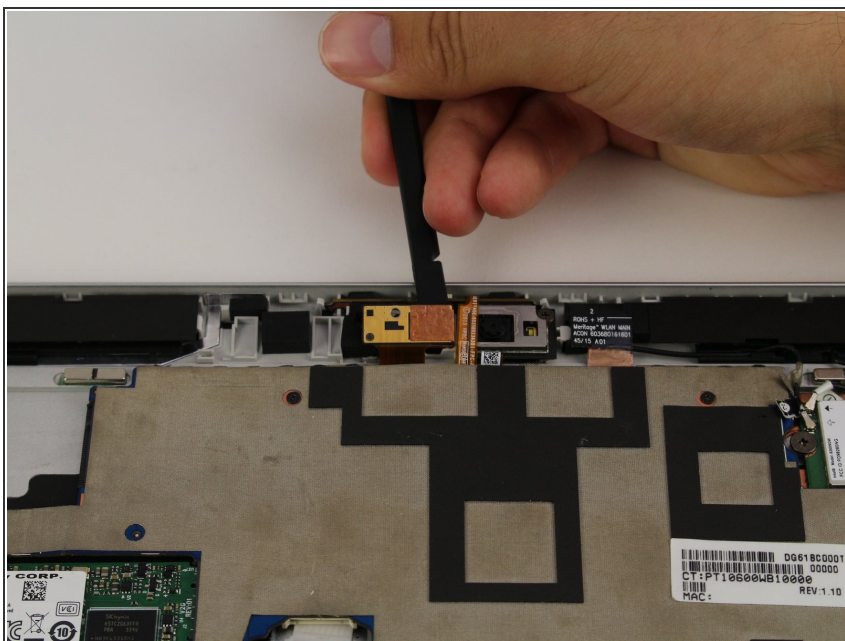
- Disconnect the flex cable from the device using the spudger.
- Remove the Display Assembly from the device.

## Step 7 — Front Facing Camera



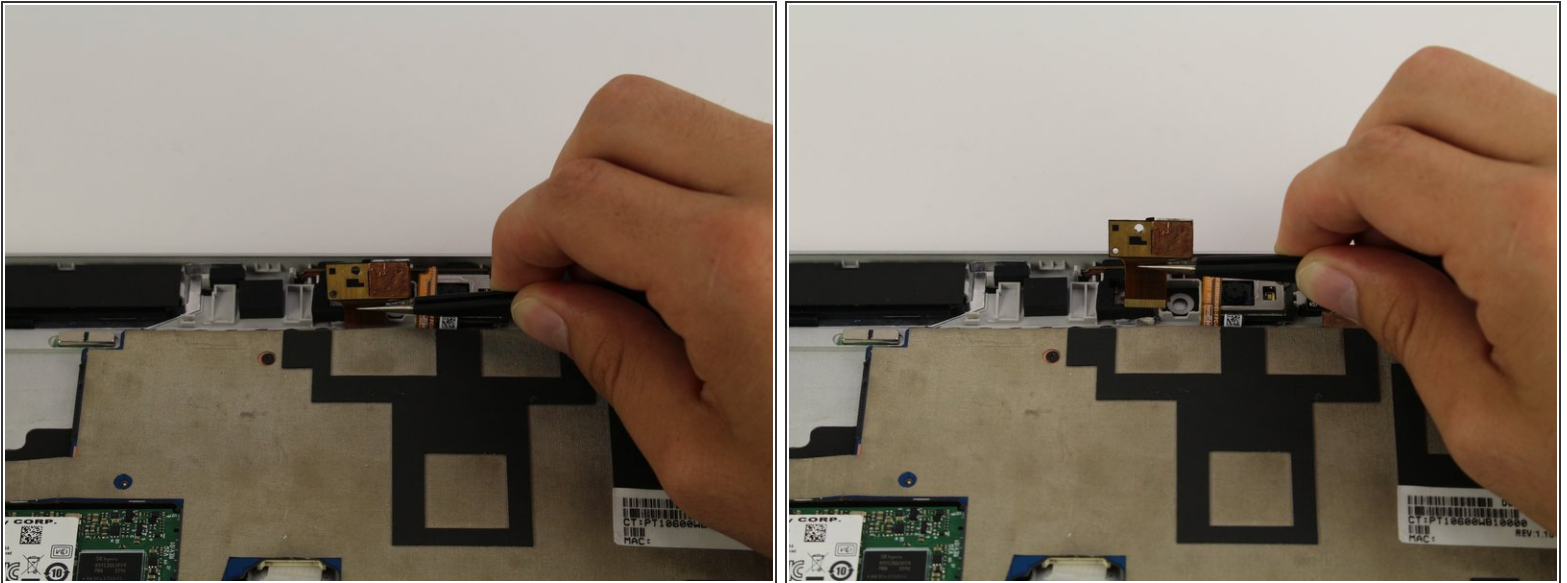
- Use a Phillips #00 screwdriver to remove the screw.

## Step 8



- Use the spudger to gently lift up the camera.

## Step 9



- Use a pair of tweezers to disconnect the flex cable from the motherboard.
- Remove the front-facing camera from the device.

To reassemble your device, follow these instructions in reverse order.