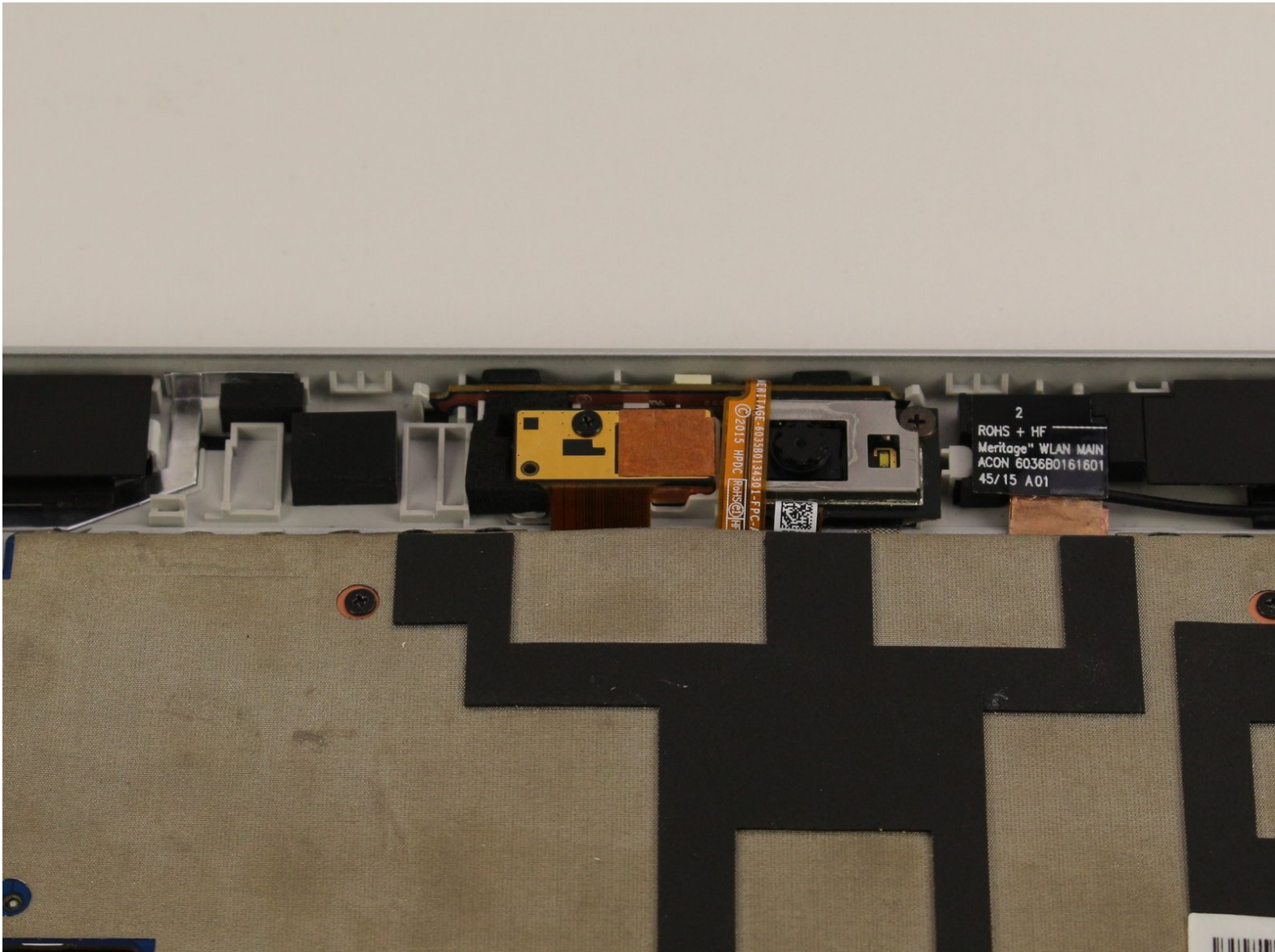




HP Elite x2 G1 1012 Rear Facing Camera Replacement

The HP x2 1012 G1 was a tablet-laptop hybrid released in May 2016.

Written By: Colin Mika



INTRODUCTION

Use this guide to replace and / or maintain the rear facing camera.



TOOLS:

- [Heavy-Duty Suction Cups \(Pair\)](#) (1)
 - [Tweezers](#) (1)
 - [Spudger](#) (1)
 - [Phillips #00 Screwdriver](#) (1)
-

Step 1 — Display



- With the screen face down, lift up the stand as far as it goes.

⚠ Make sure not to force it past the resting point.

Step 2



- Use a screwdriver to remove the six screws on the back of the tablet.

i (The screws were not in our device, so we do not know what kind of screwdriver to use.)

Step 3



- After removing the screws, delicately close the stand.
- Flip the tablet on its back so that the screen is facing up.

Step 4



- Use the suction cup to carefully separate the screen from the device. Pull upwards with a fluid and smooth motion.

⚠ Do not lift too fast! There will still be wires connecting the screen to the device. Make sure they are not tampered with.

Step 5



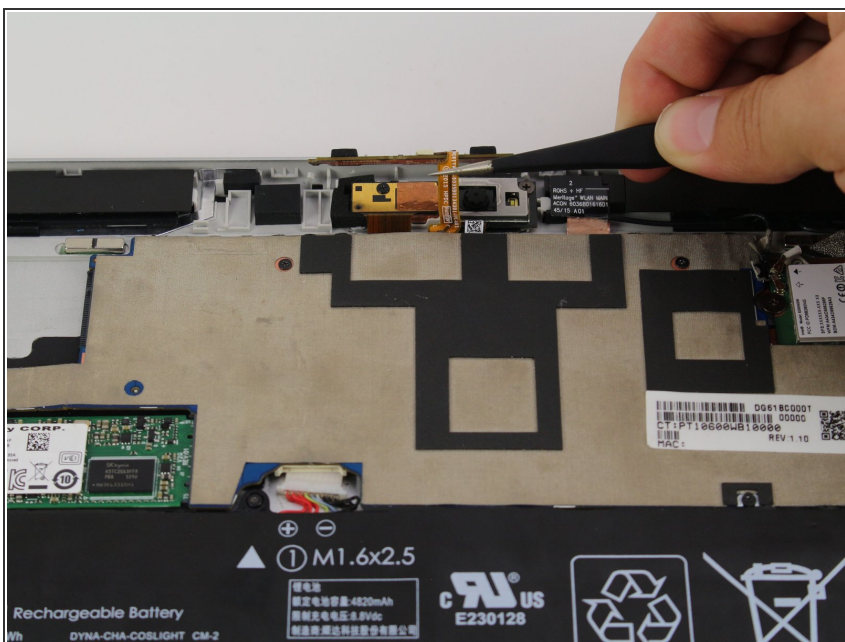
- Remove the tape on the lower left side of the screen.
- Underneath the tape, disconnect the LCM cable, the larger wire that was underneath the tape, from the back of the tablet screen.

Step 6



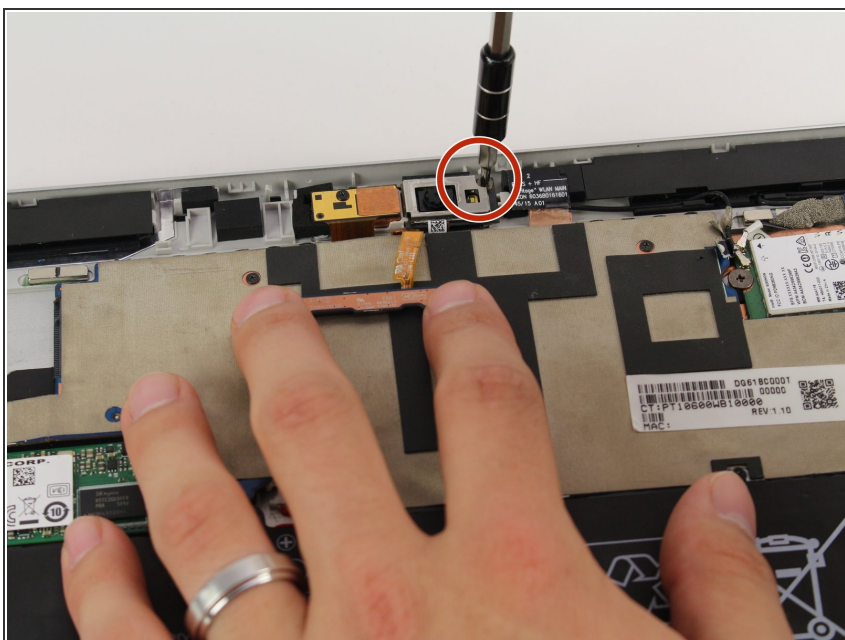
- Disconnect the flex cable from the device using the spudger.
- Remove the Display Assembly from the device.

Step 7 — Rear Facing Camera



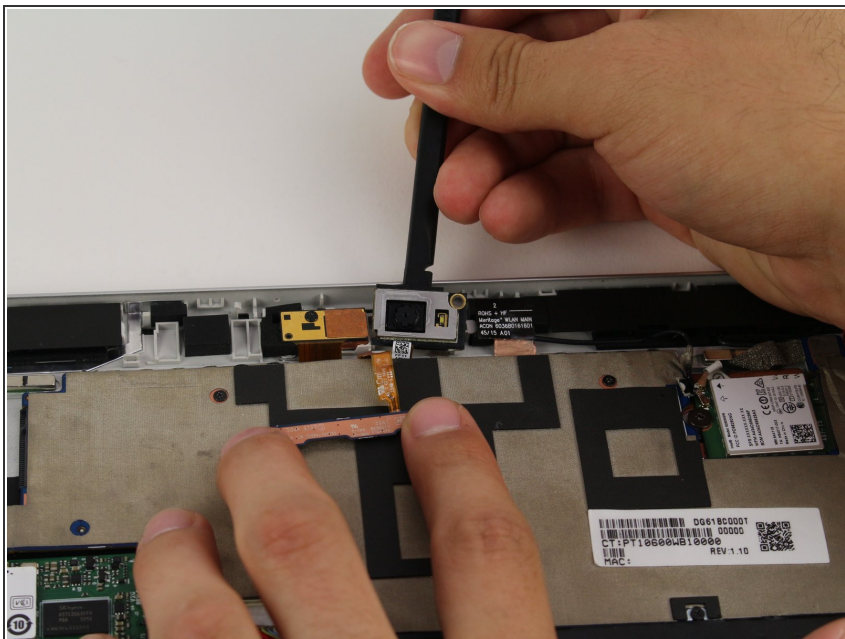
- Use a pair of tweezers to remove the flex cable on the top of the camera.

Step 8



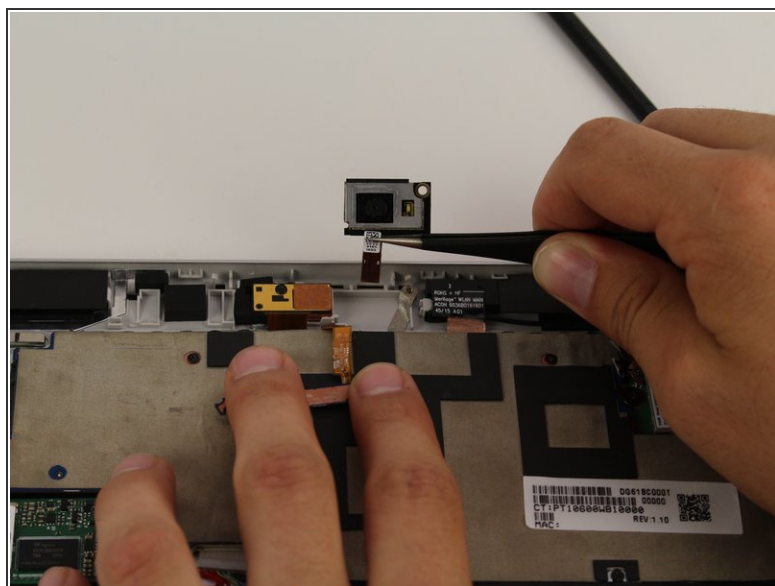
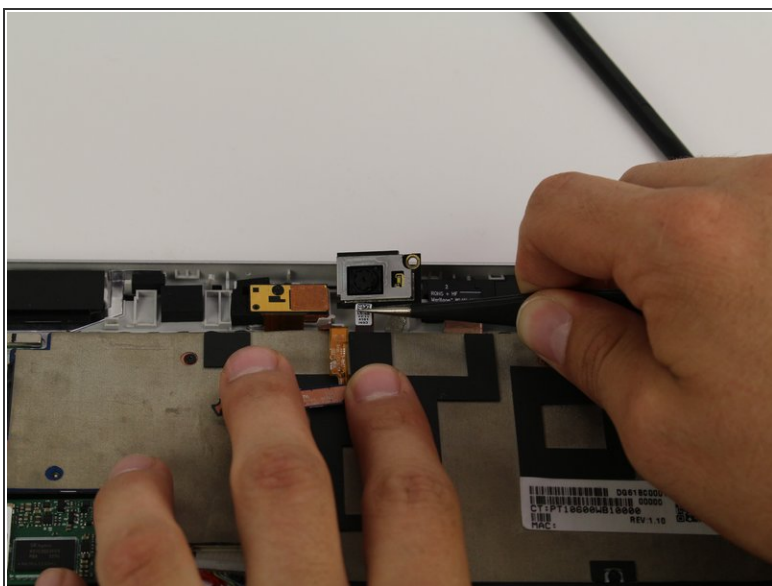
- Use a Phillips #00 screwdriver to remove the screw in the corner of the camera.

Step 9



- Use a spudger to delicately lift up the camera.

Step 10



- Use a pair of tweezers to disconnect the flex cable from the motherboard and remove the rear facing camera from the device.

To reassemble your device, follow these instructions in reverse order.

This document was generated on 2019-10-31 10:26:39 AM (MST).

