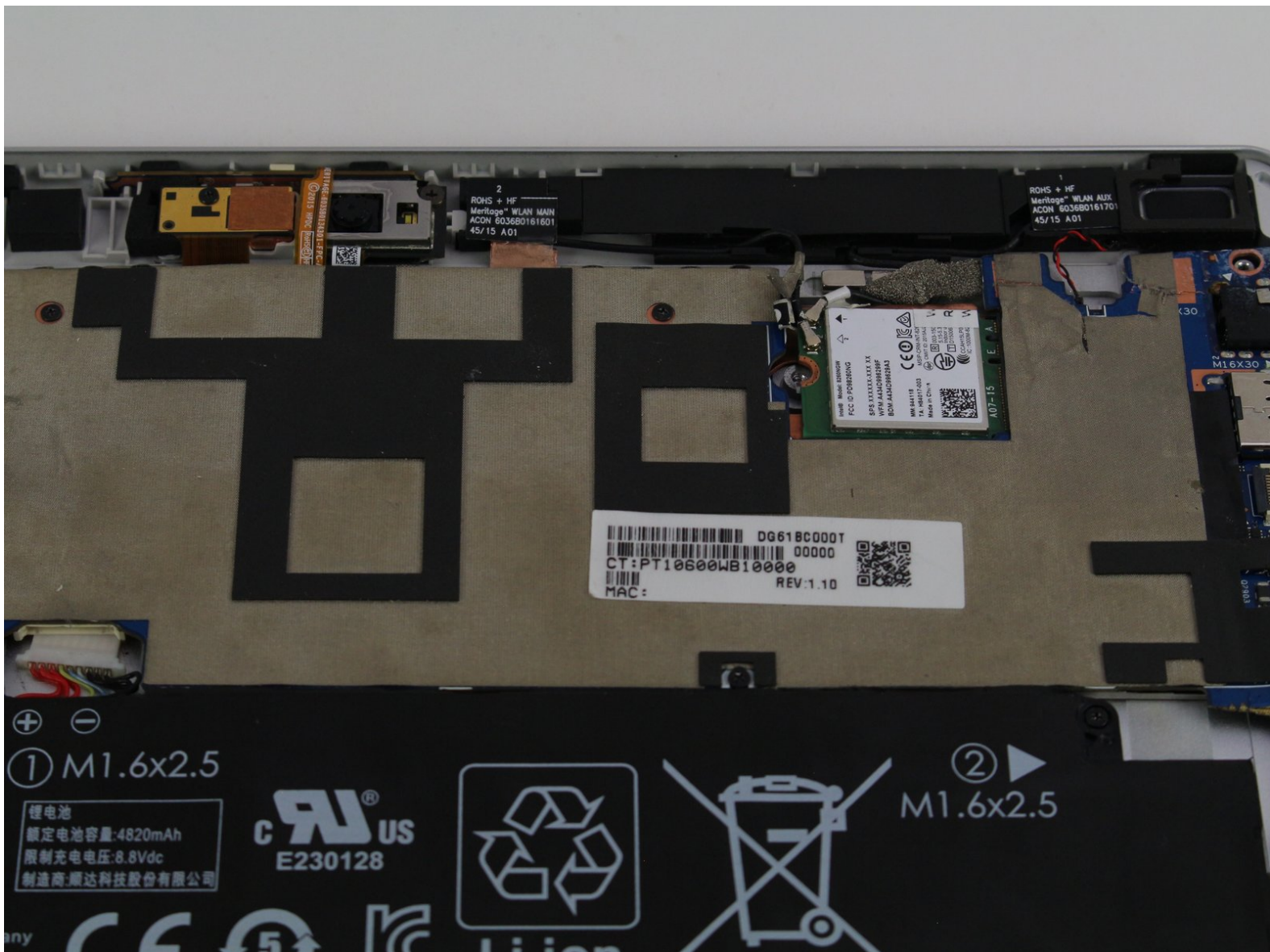




HP Elite x2 G1 1012 WWAN Card Replacement

The HP x2 1012 G1 was a tablet-laptop hybrid released in May 2016. This guide will help you replace the WWAN card in your tablet.

Written By: Colin Mika



INTRODUCTION

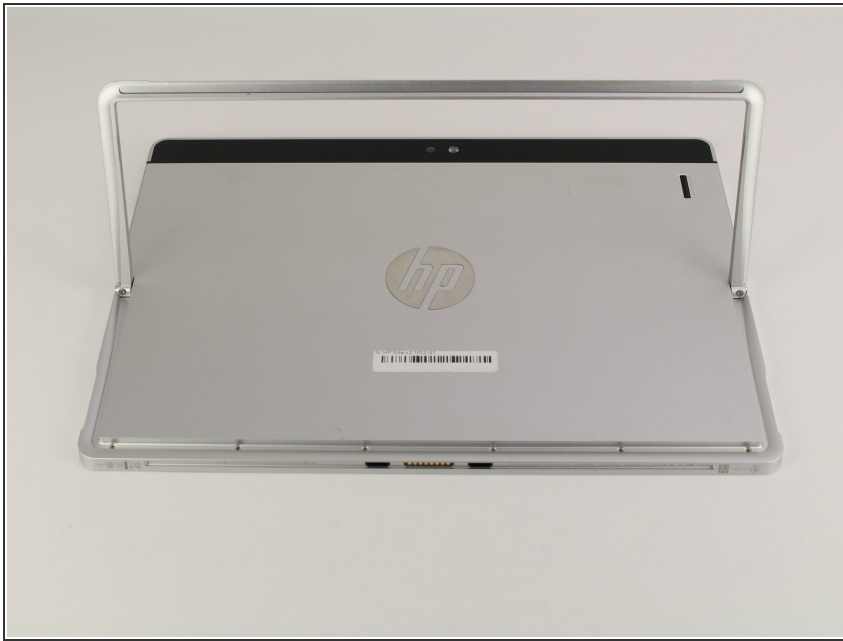
If you are having wireless connectivity issues, the WWAN Card may need to be replaced. Use this guide to properly remove it.



TOOLS:

- [Phillips #0 Screwdriver](#) (1)
 - [Heavy-Duty Suction Cups \(Pair\)](#) (1)
 - [Spudger](#) (1)
-

Step 1 — Display



- With the screen face down, lift up the stand as far as it goes.

⚠ Make sure not to force it past the resting point.

Step 2



- Use a screwdriver to remove the six screws on the back of the tablet.

i (The screws were not in our device, so we do not know what kind of screwdriver to use.)

Step 3



- After removing the screws, delicately close the stand.
- Flip the tablet on its back so that the screen is facing up.

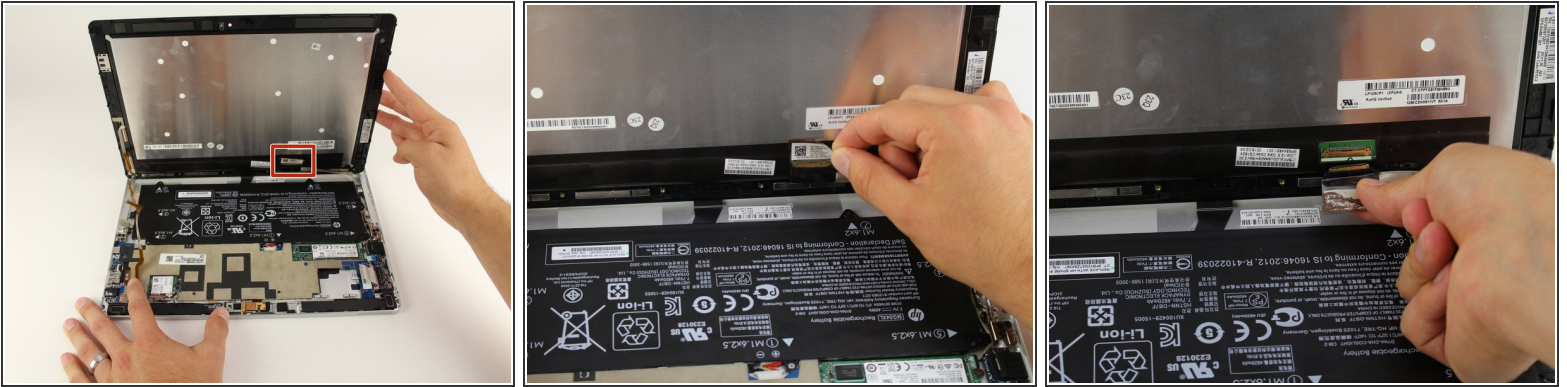
Step 4



- Use the suction cup to carefully separate the screen from the device. Pull upwards with a fluid and smooth motion.

⚠ Do not lift too fast! There will still be wires connecting the screen to the device. Make sure they are not tampered with.

Step 5



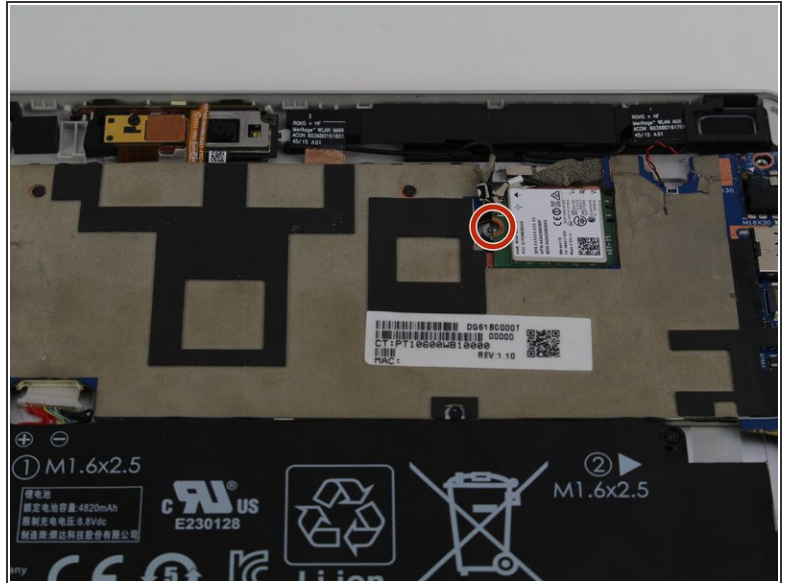
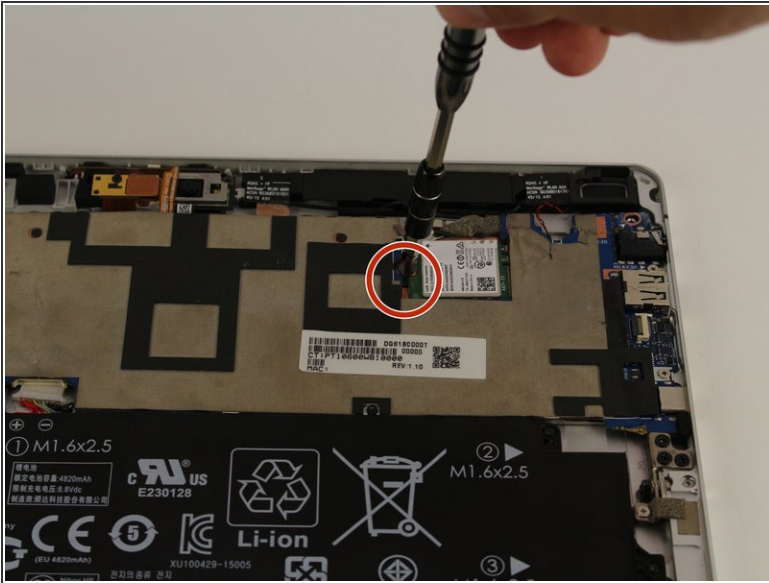
- Remove the tape on the lower left side of the screen.
- Underneath the tape, disconnect the LCM cable, the larger wire that was underneath the tape, from the back of the tablet screen.

Step 6



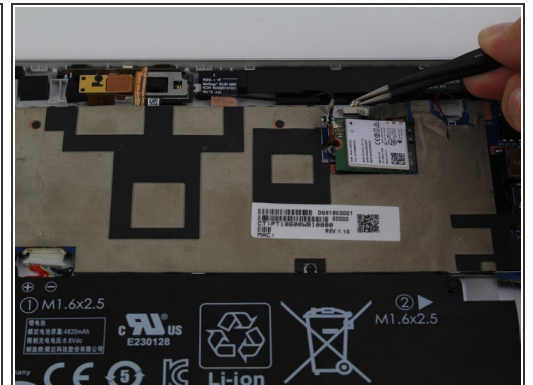
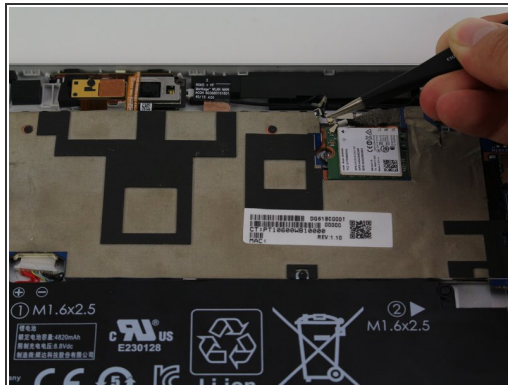
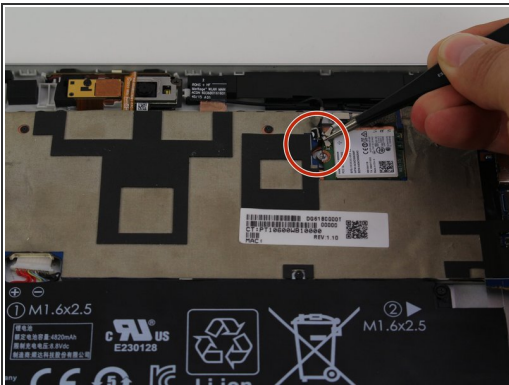
- Disconnect the flex cable from the device using the spudger.
- Remove the Display Assembly from the device.

Step 7 — WWAN Card



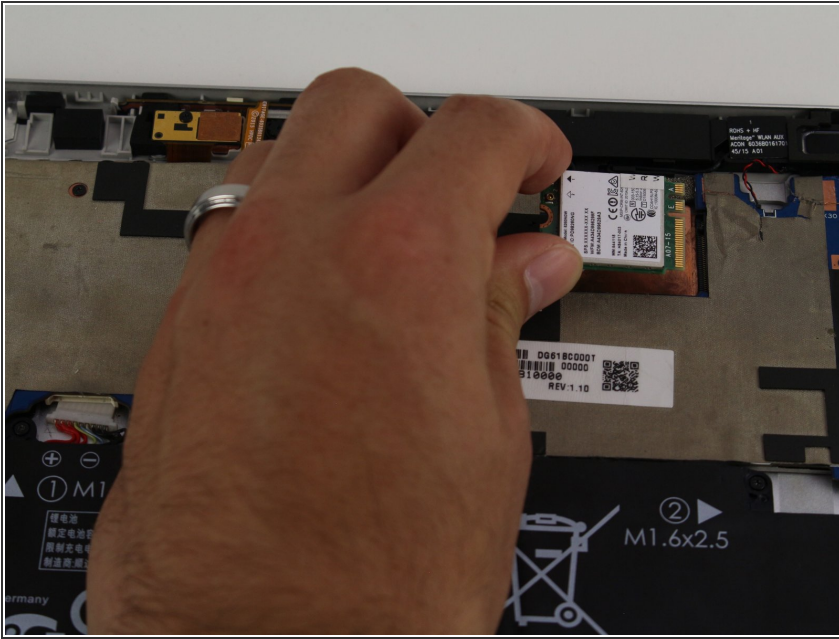
- Use a Phillips #0 screwdriver to remove the screw from the left hand side of the board.

Step 8



- Remove the two black wires that are connected to the board with a pair of tweezers.

Step 9



- Use the spudger to lift the board up slightly.
- Continue to lift and slide the WWAN card until it is completely removed from the device.

To reassemble your device, follow these instructions in reverse order.