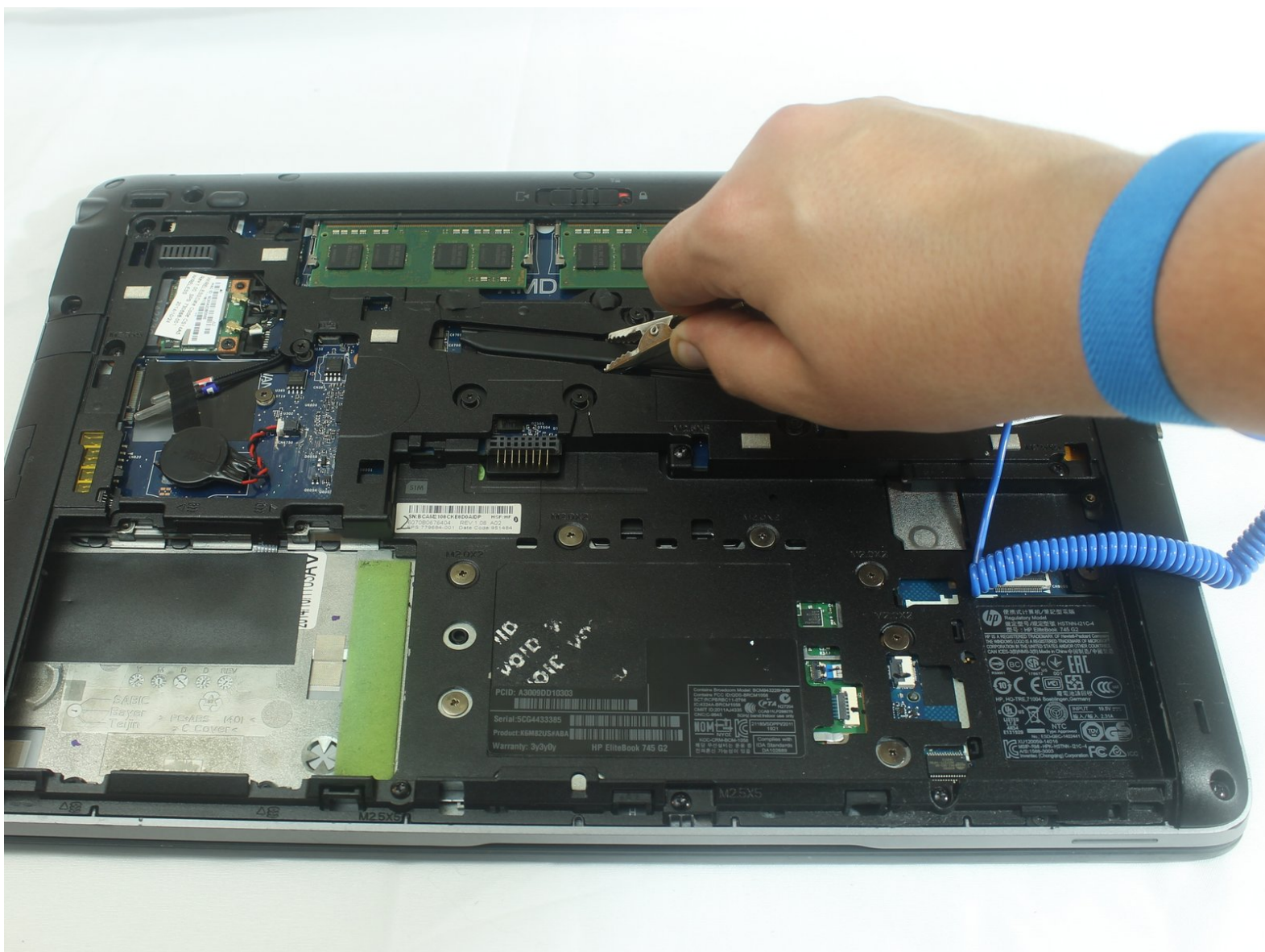




HP EliteBook 745 G2 WiFi Chip Replacement

This guide will teach you how to replace the WiFi Chip for the HP EliteBook 745 G2.

Written By: James Reinemann



INTRODUCTION

The following instructions will explain how to safely remove the HP EliteBook 745 G2's WiFi Chip. Three tools will be required for this replacement guide, precision tweezers, an anti static wrist strap, and a screwdriver with a PH-0 bit. The electronics inside of the computer are fragile and require caution when handling.



TOOLS:

- [Anti-Static Wrist Strap](#) (1)
 - [Phillips #0 Screwdriver](#) (1)
 - [ESD Safe Tweezers Blunt Nose](#) (1)
-

Step 1 — Battery



- Gently place the laptop down on a suitable workplace with the back of the laptop facing up

Step 2



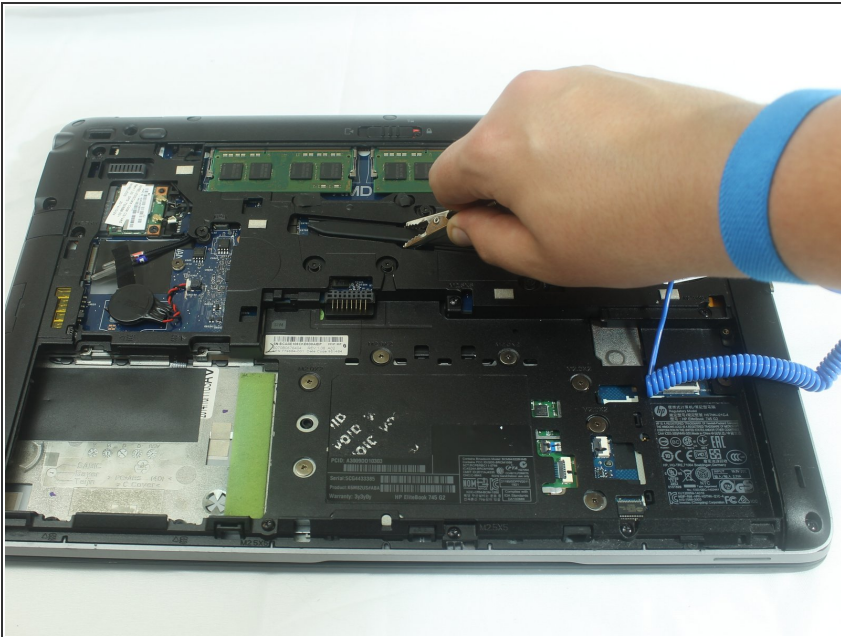
- Remove the cover by sliding the lock to the left. You will hear a click once the cover has been unlocked. Gently push down on the cover and slide it towards you to remove it.

Step 3



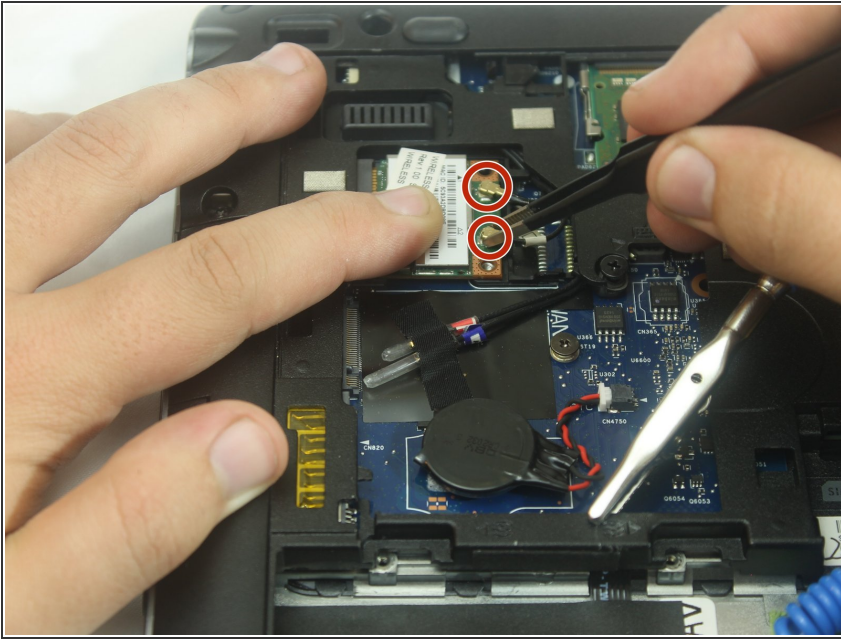
- Gently lift up on the battery (represented by this cardboard cutout) until it disconnects. Once the battery is disconnected lift away from laptop.

Step 4 — WiFi Chip



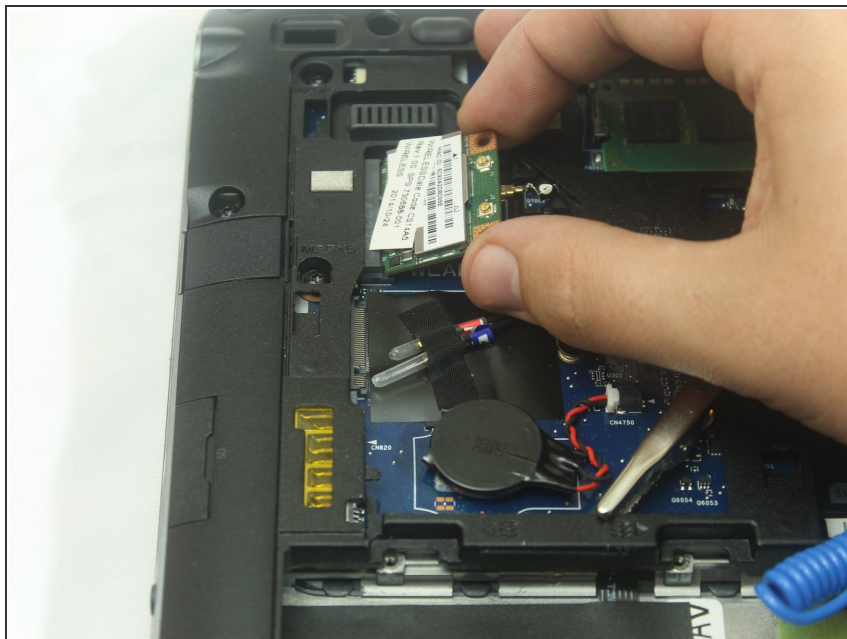
- Attach the anti-static wrist strap to any metal piece on the computer to prevent electrical damage.

Step 5



- Using precision tweezers grab the coaxial cable leads and disconnect them using steady gentle force.

Step 6



- Using the Phillips #0, remove the 1.5 mm screw holding the wifi card in place. Once the screws are removed, gently lift the card away from laptop.

To reassemble your device, follow these instructions in reverse order.